

---

# Glastron®



SALESMAN'S  
HANDBOOK

*Live It!*

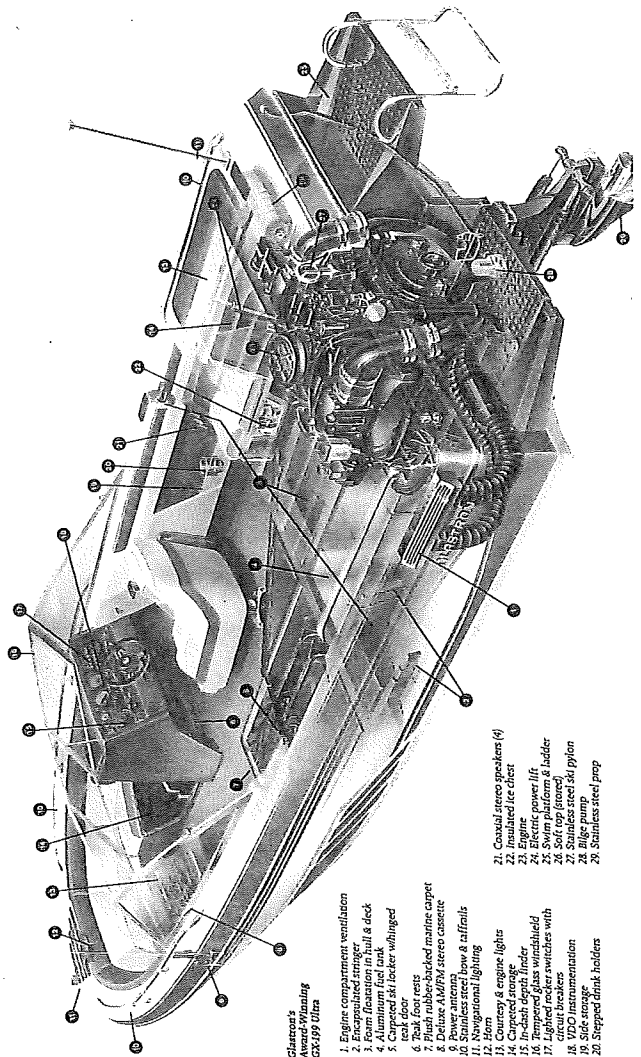
---

1988

Due to continuing improvements and changes in product features and options, Glastron Inc. does not guarantee the availability of all product features and options as displayed in this book, and reserves the right to change specifications without notice.

THIS BOOK IS FOR GLASTRON SALESMAN'S REFERENCE ONLY AND NOT TO BE GIVEN OUT OR REPRODUCED.

# PERFORMANCE BY DESIGN



Glastron's  
Aluminum Welding  
CWX 199 Ultra

- 1. Engine compartment ventilation
- 2. Propeller
- 3. Fuel tank
- 4. Aluminum fuel tank
- 5. Corroded ski locker winged
- 6. Ski locker
- 7. Flush rubber-backed marine carpet
- 8. Deluxe AM/FM stereo cassette
- 9. Spare antenna
- 10. Spare antenna
- 11. Navigational lighting
- 12. Horn
- 13. Compass & engine lights
- 14. Corroded engine
- 15. In-dash depth finder
- 16. Tempered glass windshield
- 17. Lighter power switches with breaker
- 18. VDO instrumentation
- 19. Side storage
- 20. Stopped drink holders
- 21. Coastal stereo speakers (4)
- 22. Insulated ice chest
- 23. Engine
- 24. Electric power lift
- 25. Ski locker
- 26. Ski locker
- 27. Stainless steel ski pylon
- 28. Bilge pump
- 29. Stainless steel prop



**GLASTRON INC. LIMITED WARRANTY —  
BOATS**

For a period of one year from the date of purchase to the original retail purchaser, Glastron, Inc. (hereinafter "Glastron") warrants each of its boats to be free from defects caused by faulty workmanship or materials.

Any part of the boat manufactured by Glastron and found in the judgement of Glastron to be defective in workmanship or materials will be repaired at no expense to the owner by an authorized Glastron dealer or at one of Glastron's manufacturing plants. Transportation costs to and from the authorized Glastron dealer or to and from one of Glastron's manufacturing plants as well as any derigging and rerigging required in order to effect repairs are the responsibility of the purchaser. All warranty work must be approved in advance by an authorized Glastron dealer. To validate this warranty, a warranty registration card must be returned to Glastron within ten (10) days of the retail purchase date.

**EXCLUSIONS AND LIMITATIONS**

**This warranty does not cover the following:**

1. Gelcoat cracking, crazing, fading, or blistering.
2. Windshield breakage or leakage around windshields, hatches, or other apertures.
3. Canvas, carpet, vinyl, or upholstery.
4. Loss of time, loss of use of the boat, or any other inconvenience not specifically covered hereunder.
5. Any boat which has been used for racing or commercial purposes or in any way contrary to the operating or maintenance instructions as specified in the owner's manual.
6. Equipment or accessories not manufactured by Glastron.
7. Any boat which has been powered in excess of the maximum rated horsepower or in excess of the maximum engine weight shown on the capacity plate of the boat.
8. Repairs made necessary by normal wear or by the use of parts, accessories, or modifications which are incompatible with the boat or adversely affect its performance.

**ALL WARRANTIES INCLUDING THE IMPLIED WARRANTIES OF MERCHANTABILITY, FITNESS FOR A PARTICULAR PURPOSE, OR OTHERWISE, ARE LIMITED IN DURATION TO THE PERIOD OF THE EXPRESS WARRANTIES HEREIN.** Some states do not allow limitations on how long an implied warranty lasts, so this limitation may not apply to you.

Glastron's obligations hereunder are limited to the repair or replacement of defective parts, as aforesaid, and Glastron does not assume or authorize anyone to assume for them any other obligations, consequential damages, so the above exclusion or limitation may not apply to you.

This warranty applies only to boats sold in the United States and Canada.

This warranty gives you specific legal rights, and you may have other rights which may vary from state to state.

**GLASTRON INC. LIMITED WARRANTY —  
TRAILERS**

For a period of one year from the date of purchase to the original retail purchaser, Glastron Inc. (hereinafter "Glastron") warrants each of its trailers to be free from defects caused by faulty workmanship or materials.

Any part of the trailer manufactured by Glastron and found in the judgement of Glastron to be defective in workmanship or materials will be repaired at no expense to the owner by an authorized Glastron dealer or at one of Glastron's manufacturing plants. Transportation cost to and from the authorized Glastron dealer or to and from one of Glastron's manufacturing plants are the responsibility of the purchaser. All warranty work must be approved in advance by an authorized Glastron dealer. To validate this warranty, a warranty registration card must be returned to Glastron within ten (10) days of the retail purchase date.

**EXCLUSIONS AND LIMITATIONS**

**This warranty does not cover the following:**

1. Any boats transported or stored on the trailer.
2. Equipment or accessories not manufactured or installed by Glastron.
3. Road gravel damage to paint.
4. Fading of carpet or paint due to normal wear or weathering.
5. Any trailer which has been overloaded in excess of the capacity stated on the identification plate and in the owner's operator manual.
6. Oxidation or corrosion from use in salty or briny waters or from extended use in other waters.
7. Loss of tire/wheel assemblies due to inadequate torque maintenance of wheel lugs.
8. Any trailer which has been modified so as to adversely affect the trailers operation, performance, or durability, or that has been modified so as to change the intended use of the trailer.

9. Repairs made necessary by normal wear or by the use of parts, accessories or modifications which are incompatible with the boat or adversely affect its performance.
10. Loss of time, loss of use of trailer, or any other inconvenience not specifically covered hereunder.

**ALL WARRANTIES INCLUDING THE IMPLIED WARRANTIES OF MERCHANTABILITY, FITNESS FOR A PARTICULAR PURPOSE, OR OTHERWISE ARE LIMITED IN DURATION TO THE PERIOD OF THE EXPRESS WARRANTIES HEREIN.** some states do not allow limitations on how long an implied warranty lasts, so this limitation may not apply to you.

Glastron's obligations hereunder are limited to the repair or replacement of defective parts, as aforesaid, and Glastron does not assume or authorize anyone to assume for them any other obligations, consequential or otherwise. Some states do not allow the exclusion or limitations of incidental or consequential damages, so the above exclusion or limitation may not apply to you.

This warranty applies only to trailers sold in the United States and Canada.

This warranty gives you specific legal rights, and you may have other rights which may vary from state to state.

**SALES INFORMATION FOR  
GLASTRON AND  
GLASTRON/CARLSON BOAT LINES**

Glastron Inc. has not chosen the easiest or cheapest approach to boat construction, but it is the one which created satisfied customers year after year.

This handbook will provide you, the dealer, with information pertinent to each boat in the Glastron and Glastron/Carlson model lines. Its size is such that it can be carried with you on the showroom floor and referred to should specific questions come up pertaining to specifications, features or safety standards.

While each boat may be constructed in a different manner to suit its design, use and capability, there are many items which remain standard throughout all three lines.

**HAND LAY-UP CONSTRUCTION**

Hand lay-up construction is Glastron's method of manufacture in all of the boat lines. In the hand lay-up method, the basic raw materials, fiberglass mat, fiberglass roving and resin are used in the basic lay-up of hulls and decks. In strength and construction the hand lay-up method can be compared with plywood lamination. Plywood obtains its strength and resilience through its continuous layers, one bonded to the other. The same principle applies to the hand lay-up method of building a fiberglass boat. Also, Glastron's hand lay-up provides a high fiberglass-to-resin ratio to ensure lightness which means more speed with less horsepower and fuel.

Each boat receives a different hull lay-up, depending upon its size and horsepower requirements.

In each model, the keel areas of fiberglass are overlapped, thereby providing a double thickness in these areas of impact.

**STRINGER SYSTEM**

Each boat contains a rigid stringer system to sup-

port the hull and maintain its uniform shape. These stringers are encapsulated in fiberglass and bonded to the hull to assure a rigid single structure. The floor is then fastened in place to the stringer system. Other wood parts are protected against dry rot by a coating of wood-life preservative.

**HULL**

The SSV hull allows Glastron runabouts the smooth, fast ride of a deep vee hull, but with more stability. The position of the wide chines act as sponsons providing stability while the boat is at rest. Under power, the hull chines help support the deep vee section of the SSV hull for precise turning, as well as to provide lift that gets Glastron boats up on plane faster.

**FUEL SYSTEMS**

All fuel systems comply with current U.S. Coast Guard and NMMA specifications. All fuel tanks are pressure checked when the fuel lines are attached, to assure that there are no leaks around the fittings. In addition, each installed fuel tank includes anti-siphon protection to reduce the possibility of fuel spillage.

**SEAT AND SEAT VINYL**

Glastron Inc. manufactures all of their own seats. Wood used in seats, as well as all exposed wood in the boat, is dipped in wood preservative in order to provide maximum protection against the possibility of delamination and rot. All plywood is bonded with waterproof exterior grade glue. Joints are glued and T-nuts are used extensively. Vinyls used in seats and other areas of the boats are the highest standard marine grade vinyls. Many models utilize a back-to-back sleeper seat which may be extended for the convenience of the owner.

**CLEATS AND TRIM**

Cleats and trim are all marine hardware. Backing plates are used beneath the deck to give added strength to cleats, boarding ladders and rail stanchions.



### RESINS AND GELCOATS

Unlike most other boat manufacturers who use general purpose orthothalic resins, Glastron uses a high quality blended D.C.P.D. laminating resin along with the highest quality isothalic gelcoat. Laboratory test results have shown this resin to have higher strength, improved finish and more resistance to water blistering. This gelcoat is applied at an average thickness of 20 ml.-22 ml. (wet), 16 ml.-18 ml. (dry).

### APPROXIMATE SPEED

Approximate speed ranges are based on actual speed tests measured by radar. Boats are tested with various props and under varying weight/load conditions to determine the recommended prop for optimum performance. Keep in mind that optimum performance provides the best performance through all r.p.m. ranges and does not necessarily provide the highest peak speed performance.

### FOAM FLOTATION

All boats manufactured by Glastron and Glastron/Carlson comply with the U.S. Coast Guard regulations and NMMA standards for flotation. All O/B's under 20 feet have level flotation.

### NMMA CERTIFICATION

All boats manufactured by Glastron and Glastron/Carlson are certified by the National Marine Manufacturers Association as having met current established standards in the areas of fuel and electrical systems, compartment ventilation, steering, lighting, load capacities, flotation and horsepower limitations (O/B only). All lines are manufactured in compliance with U.S. Coast Guard Federal Regulations.

Many questions have arisen concerning NMMA certification of horsepower for outboards. The U.S. Coast Guard and many states now use this certification as a standard for horsepower limitation on all manufacturer's boats. This horsepower certification is derived in the following manner. NOTE: Different methods may be used for smaller boats having no remote

steering or different hull forms.

- (1) Multiply the length of the boat in feet and tenths of feet times the maximum transom width in feet and tenths of feet.
- (2) Round off the previous answer down to the nearest whole number and multiply by two.
- (3) Subtract 90.
- (4) If the number is not a multiple of five, raise it to the next multiple of five.

This will provide you with the maximum NMMA certified and USCG horsepower rating which can be established for a specific model of boat.

Glastron Inc. does not recommend overpowering. To do so will result in voiding the warranty.

### ENGINE WEIGHT CHART

All sterndrives have been shown without engine weight. To arrive at the total boat weight with engine installed, refer to boat weight on individual model specifications page and add applicable engine weight as found in engine specification section.

Keep in mind when deriving trailer capacity that this weight does not take into consideration additional weight loads for fuel, gear, anchors, battery, etc., which the trailer will have to support.

### PROP RECOMMENDATIONS

Glastron Inc. has recommended the prop which, in our opinion, provides the best all-around performance for the sterndrive engine-boat combination. Please keep in mind that altitude, load conditions, temperature, humidity, tuning, etc., can all affect a given boat's performance. Therefore, performance may vary dependent upon condition.

## DEFINITIONS OF BOAT MEASUREMENTS

**Length Overall (LOA)** — Distance along the centerline from the tip of the bow to the aft-most part of the hull.

**Maximum Beam** — Maximum width of the boat.

**Transom Width** — Maximum width of the boat at transom.

**Depth** — Vertical distance from lowest point of the keel to highest point of the boat, excluding windshields, lights and other removable components.

**Transom** — Vertical distance at boat's centerline from the keel/transom intersection to the transom top.

**Maximum Depth** — Vertical distance from lowest point of the keel to the highest point of boat, including windshields.

**Cockpit Depth** — Vertical distance from boat floor to top of gunwale as measured at the driver seat.

**Length Overall on Trailer** — Distance measured along the boat centerline, from forward-most point of trailer to aft-most point of motor/outdrive.

**Boat Height on Trailer** — Vertical distance from ground to highest point of boat, including windshield.

**Draft (Drive unit up)** — Total number of inches of boat and/or motor and drive unit below the waterline. Measured unloaded, with the motor/drive-unit in the full up position.

**Draft (Drive unit down)** — Total number of inches of boat and/or motor and drive unit below the waterline. Measured unloaded, with the motor/drive-unit in the full down position.

## GLASTRON CUSTOM TRAILERS

ALL GLASTRON CUSTOM TRAILERS comply with FEDERAL DEPARTMENT OF TRANSPORTATION and the SOCIETY OF AUTOMOTIVE ENGINEERS, safety standards. These cover areas such as lighting, de-rating of automotive tires for trailer use, proper gross and axle weight values, brake systems, and Universal Vehicle Identification Code.

THE GLASTRON CUSTOM TRAILERS share many features for easy, trouble-free trailering, launching and loading. These include:

- Low profile, wide track design for stable towing as well as easy launching and loading.
- Soft riding automotive tires.
- Slotted steel wheels painted to match the trailer.
- Color coordination with each Glastron boat.
- BEARING BUDDY<sup>®</sup> axle with waterproof hubs and bearing system.
- Custom fitted bunks, engineered for maximum hull support. The bunk placement also insures easy and sure centering of the boat onto the trailer, making guide-on devices such as side boards or rollers unnecessary.
- Full enclosed fenders with carpet decks fore and aft.
- Triangulated bowstop with center mounted casterjack.
- Custom roll formed rails rather than structural steel or tubing. This gives the GLASTRON TRAILER the smooth, clean appearance that structural steel cannot, and without the water trapping properties of tubing.
- The rails are cold formed in a sweeping curve, not pieced and welded together.
- MIG welding is used with only cosmetic, superficial grinding when necessary. In all about 90% of all welds are hidden, or are not apparent when the boat is on the trailer.
- Fenders and deck are bolted on the frame, again to eliminate visible welds, as well as increase serviceability.
- In addition to a baked-on polyester paint, the steel trailer receives a baked-on layer of a newly developed high solid, zinc rich primer, applied after a lengthy session in the cleaning and etching tanks.
- A hot dipped galvanized finish is available on all models for use in salty or coastal waters.



## TRAILER SPECIFICATIONS

| TRAILER MODEL | BOAT MODEL                               | LOA   | WOA | RAIL          | CAPACITY | WT. | TIRES     | AXLE   | BRAKES   |
|---------------|--|-------|-----|---------------|----------|-----|-----------|--------|----------|
| SG-16         | Z-16, X-16, SSV-162                      | 17'5" | 91" | 11 GA x 4-1/2 | 1720     | 520 | C78-14 WW | Single | Optional |
| SC-16         | CYX-16                                   | 17'5" | 91" | 11 GA x 4-1/2 | 1720     | 520 | C78-14 WW | Single | Optional |
| SG-17         | Z-17, X-17, SSV-172                      | 18'6" | 96" | 7 GA x 4-5/8  | 2560     | 640 | H78-14 WW | Single | Optional |
| SGT-17        | Z-17, X-17, SSV-172                      | 18'6" | 96" | 7 GA x 4-5/8  | 3500     | 820 | F78-14 WW | Tandem | Optional |
| SX-17         | SSV-175, SSV-177                         | 18'6" | 96" | 7 GA x 4-5/8  | 2560     | 640 | H78-14 WW | Single | Optional |
| SXT-17        | SSV-175, SSV-177                         | 18'6" | 96" | 7 GA x 4-5/8  | 3500     | 820 | F78-14 WW | Tandem | Optional |
| SC-18         | CYX-18                                   | 18'6" | 96" | 7 GA x 4-5/8  | 2560     | 640 | H78-14 WW | Single | Optional |
| SCT-18        | CYX-18                                   | 18'6" | 96" | 7 GA x 4-5/8  | 3500     | 820 | F78-14 WW | Tandem | Optional |
| TX-19S        | X-19S                                    | 18'6" | 96" | 7 GA x 4-5/8  | 2100     | 640 | F78-14 WW | Single | Optional |
| SG-19         | X-19, CX-19, SS-198, SSV-185/187, GX-185 | 20'5" | 96" | 7 GA x 4-5/8  | 2560     | 650 | H78-14 WW | Single | Optional |
| SGT-19        | X-19, CX-19, SS-198, SSV-185/187, GX-185 | 20'5" | 96" | 7 GA x 4-5/8  | 3500     | 830 | F78-14 WW | Tandem | Optional |

| TRAILER MODEL | BOAT MODEL          | LOA   | WOA | RAIL         | CAPACITY | WT.  | TIRES      | AXLE   | BRAKES   |
|---------------|---------------------|-------|-----|--------------|----------|------|------------|--------|----------|
| SX-19         | SSV-195, GX-195     | 20'5" | 96" | 7 GA x 4-5/8 | 2560     | 650  | H78-14 WW  | Single | Optional |
| SXT-19        | SSV-195, GX-195     | 20'5" | 96" | 7 GA x 4-5/8 | 3500     | 830  | F78-14 WW  | Tandem | Optional |
| S-19          | SSV-197/199, GX-199 | 20'5" | 96" | 7 GA x 4-5/8 | 3080     | 650  | G78-14c WW | Single | Optional |
| ST-19         | SSV-197/199, GX-199 | 20'5" | 96" | 7 GA x 4-5/8 | 3500     | 830  | F78-14 WW  | Tandem | Optional |
| SC-20         | CYX-20              | 20'5" | 96" | 7 GA x 4-5/8 | 2560     | 650  | H78-14 WW  | Single | Optional |
| SCT-20        | CYX-20              | 20'5" | 96" | 7 GA x 4-5/8 | 3500     | 830  | F78-14 WW  | Tandem | Optional |
| SGT-21        | SS-212              | 22'6" | 96" | 7 GA x 5-3/4 | 4100     | 1300 | F78-14 WW  | Tandem | Standard |
| SST-21        | SSV-215             | 22'6" | 96" | 7 GA x 5-3/4 | 4100     | 1300 | F78-14 WW  | Tandem | Standard |
| SCT-23        | CYX-23              | 23'   | 96" | 7 GA x 4-5/8 | 4000     | 1150 | F78-14 WW  | Tandem | Standard |
| SGT-23        | SSV-233             | 25'   | 96" | 7 GA x 5-3/4 | 4700     | 1300 | H78-14 WW  | Tandem | Standard |
| SST-23        | GX-239              | 22'6" | 96" | 7 GA x 5-3/4 | 4100     | 1300 | F78-14 WW  | Tandem | Standard |



## 1988 COLOR DISTRIBUTION

| Gelcoat | Accent Primary | Blue OP Blue | Blue MF Blue | Blue OP White | Blue MF White |
|---------|----------------|--------------|--------------|---------------|---------------|
|---------|----------------|--------------|--------------|---------------|---------------|

### Glastron Family Affordables

|              |  |  |  |  |  |
|--------------|--|--|--|--|--|
| Z-16         |  |  |  |  |  |
| X-16         |  |  |  |  |  |
| Z-17         |  |  |  |  |  |
| X-17         |  |  |  |  |  |
| X-19 (*Std.) |  |  |  |  |  |
| CX-19        |  |  |  |  |  |

*X-19 Special only available in Blue Opaque/White Hull/Blue-Gray-White Interior*

### Glastron SSV Models

|         |  |  |  |  |  |
|---------|--|--|--|--|--|
| SSV-162 |  |  |  |  |  |
| SSV-172 |  |  |  |  |  |
| SSV-177 |  |  |  |  |  |
| SSV-175 |  |  |  |  |  |
| SSV-185 |  |  |  |  |  |
| SSV-187 |  |  |  |  |  |
| SSV-195 |  |  |  |  |  |
| SSV-197 |  |  |  |  |  |
| SSV-199 |  |  |  |  |  |
| SSV-215 |  |  |  |  |  |
| SSV-233 |  |  |  |  |  |

### Glastron-Ultra GX Models

|        |  |  |  |  |  |
|--------|--|--|--|--|--|
| GX-185 |  |  |  |  |  |
| GX-195 |  |  |  |  |  |
| GX-199 |  |  |  |  |  |
| GX-239 |  |  |  |  |  |

### Glastron-Carlson Models

|        |  |  |  |  |  |
|--------|--|--|--|--|--|
| CVX-16 |  |  |  |  |  |
| CVX-18 |  |  |  |  |  |
| CVX-20 |  |  |  |  |  |
| CVX-23 |  |  |  |  |  |

### Glastron Super Sportsman Models

|        |  |  |  |  |  |
|--------|--|--|--|--|--|
| SS-198 |  |  |  |  |  |
| SS-212 |  |  |  |  |  |

## 1988 COLOR DISTRIBUTION

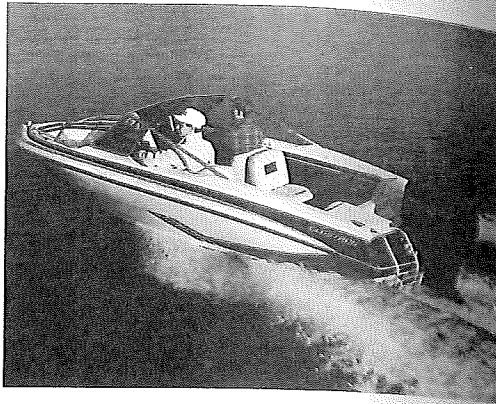
| Red OP White | Red MF White | Teal White | Black MF White | Brown OP White | Brown MF White |
|--------------|--------------|------------|----------------|----------------|----------------|
|--------------|--------------|------------|----------------|----------------|----------------|

|  |  |  |  |  |  |
|--|--|--|--|--|--|
|  |  |  |  |  |  |
|  |  |  |  |  |  |
|  |  |  |  |  |  |
|  |  |  |  |  |  |
|  |  |  |  |  |  |
|  |  |  |  |  |  |
|  |  |  |  |  |  |
|  |  |  |  |  |  |
|  |  |  |  |  |  |
|  |  |  |  |  |  |
|  |  |  |  |  |  |
|  |  |  |  |  |  |
|  |  |  |  |  |  |
|  |  |  |  |  |  |
|  |  |  |  |  |  |
|  |  |  |  |  |  |
|  |  |  |  |  |  |
|  |  |  |  |  |  |
|  |  |  |  |  |  |
|  |  |  |  |  |  |
|  |  |  |  |  |  |
|  |  |  |  |  |  |
|  |  |  |  |  |  |

Shaded areas are the available colors by model.



# Z-16



## SPECIFICATIONS

LOA 16'2 1/4"  
Beam 79 1/4"  
Depth 38 3/4"  
Maximum Depth 51"  
LOA on Trailer 19'  
Rack & Pinion Steering  
Max. Load 1290 lbs.  
Max. Pers. 6 or 805 lbs.  
Draft: A. Drive Unit Up 11 1/2"  
B. Drive Unit Down 29 1/4"

Approx. Wt. Excl. Engine 750 lbs.  
Ice Box Capacity 30 qt.  
Transom Width 77 1/2"  
Maximum Horsepower 85  
Motor Shaft Length 20"  
Cockpit Depth 25 3/4"  
Boat Ht. on Trailer 72"  
NMMA Certified

**STANDARD FEATURES**  
Hand laid fiberglass construction  
6 gallon portable fuel tank  
Color coordinated upholstery  
4 tie-down cleats  
Plush carpet  
Insulated ice chest under forward bow cushion  
Storage under bow seats and jump seats  
Meets and exceeds Coast Guard flotation requirements  
Drink holders  
Anodized aluminum bow rails  
Anodized aluminum stern boarding ladder  
Side tray storage  
In-floor ski locker  
Soft top

Walk-thru tempered glass windshield  
Fold out sleeper seats  
Aft jump seats  
Concealed electric horn  
Stainless steel bow eyes and ski eyes  
Navigation lights with removable stern light  
Open bow with cushioned seating  
Accent striping  
Padded sport wheel  
Bilge pump  
50 or 85 H.P. Force outboard engine

**OPTIONS**  
Tonneau bow cover  
Side and stern curtains  
Custom mooring cover  
Soft top boot cover  
Walk-thru curtain

# X-16



## SPECIFICATIONS

LOA 16'4"  
Beam 79 1/4"  
Depth 38 3/4"  
Maximum Depth 51"  
LOA on Trailer 19'  
Rack and Pinion Steering  
Max. Load 900 lbs.  
Max. Pers. 7 or 900 lbs.

Approx. Wt. Excl. Engine 800 lbs.  
Ice Box Capacity 30 qt  
Transom Width 77 1/2"  
Max. Horsepower N/A  
Motor Shaft Length N/A  
Cockpit Depth 25 3/4"  
Boat Ht. on Trailer 72"  
Fuel Capacity 18 gal  
NMMA Certified

**STANDARD FEATURES**  
Hand laid fiberglass construction  
Color coordinated upholstery  
4 tie-down cleats  
Built-in 18 gallon fuel tank  
Plush carpet  
Meets and exceeds Coast Guard flotation requirements  
Insulated ice chest under forward bow cushion  
Storage under bow seats, bench seat and aft deck port and starboard compartments  
In-floor ski locker  
Soft top  
Anodized aluminum bow rails  
Walk-thru tempered glass windshield  
Bucket seats  
Aft bench  
Concealed electric horn and ski eyes  
Stainless steel bow eye  
Navigation lights with removable stern light

Anodized aluminum stern boarding ladder  
Lockable glove compartment  
Drink holders  
Open bow with cushioned seating  
In-handle trim control  
Bilge pump and blower  
Instrument panel with: speedometer, tachometer, electric fuel gauge, voltmeter, oil pressure gauge, engine temperature gauge plus switches for bilge pump, blower, horn and lights  
Accent striping  
Padded sport wheel

## OPTIONS

MerCruiser or OMC controls  
Tonneau cover  
Side and stern curtains  
Custom mooring cover  
Soft top boot  
Walk-thru curtain

## ENGINE OPTIONS

2.5 MerCruiser  
3.0 MerCruiser  
3.0 OMC



# Z-17



## SPECIFICATIONS

|                           |                                   |
|---------------------------|-----------------------------------|
| LOA 17'¼"                 | Approx. Wt. Excl. Engine 955 lbs. |
| Beam 83"                  | Ice Box Capacity 25 qt.           |
| Depth 46¾"                | Transom Width 79"                 |
| Maximum Depth 59"         | Maximum Horsepower 125            |
| LOA on Trailer 21'9"      | (not to exceed 315 lbs.)          |
| Rack & Pinion Steering    | Motor Shaft Length 20"            |
| Max. Load 1550 lbs.       | Cockpit Depth 29½"                |
| Max. Pers. 7 or 1015 lbs. | Boat Ht. on Trailer 73"           |
|                           | Fuel Capacity 24 gal              |
|                           | NMMA Certified                    |

Draft: A. Drive Unit Up 10½"  
B. Drive Unit Down 28"

**STANDARD FEATURES**  
Hand laid fiberglass construction  
Built-in 24 gallon fuel tank  
Fuel gauge  
Color coordinated upholstery  
4 tie-down cleats  
Plush carpet  
25 quart Ice Chest  
Storage under bow seats and jump seats  
Aft storage compartments  
Meets and exceeds Coast Guard flotation requirements  
Drink holders  
Anodized aluminum bow rails  
Anodized aluminum stern boarding ladder  
Lockable glove compartment

In-floor ski locker  
Soft top  
Walk-thru tempered glass windshield  
Fold out sleeper seats  
Aft jump seats  
Concealed electric horn  
Stainless steel bow eye and ski eyes  
Navigation lights with removable stern light  
Open bow with cushioned seating  
Bilge pump  
85 or 125 H.P. Force outboard

### OPTIONS

Side and stern curtains  
Custom mooring cover  
Soft top boot cover  
Tonneau cover  
Walk-thru curtain



# X-17



## SPECIFICATIONS

LOA 17'1"  
Beam 83"  
Depth 46 3/4"  
Maximum Depth 60 1/2"  
LOA on Trailer 20'2 3/4"  
Rack and Pinion Steering  
Max. Load 1050 lbs.  
Max. Pers. 7 or 1050 lbs.

Approx. Wt. Excl. Engine 950 lbs.  
Ice Box Capacity 24 qt  
Transom Width 79"  
Max. Horsepower N/A  
Motor Shaft Length N/A  
Cockpit Depth 29 1/2"  
Boat Ht. on Trailer 77 1/4"  
Fuel Capacity 24 gal  
NMMA Certified

Draft: A. Drive Unit Up 14"  
B. Drive Unit Down 31 1/2"

## STANDARD FEATURES

Fold-out sleeper seats  
All jump seats  
Built in 24 gallon fuel tank  
Open bow with cushioned seating  
In-handle trim control  
Anodized aluminum bow rails  
Anodized aluminum stern boarding ladder with non-skid swim step  
Walk-thru tempered glass windshield  
Meets and exceeds Coast Guard flotation requirements  
Color coordinated upholstery  
Navigation lights with removable stern light  
Insulated ice chest  
Instrument panel with: speedometer, tachometer, electric fuel gauge, voltmeter, oil pressure gauge, engine temperature gauge plus switches for bilge pump, blower, horn and lights  
Hand laid fiberglass construction

Storage under bow seats, jump seats, and sun lounge  
Bilge pump and blower  
4 tie-down cleats  
Stainless steel bow eye  
Soft top with concealed storage  
Concealed electric horn  
Drink holders  
Lockable glove compartment  
Side tray storage  
In-floor ski locker  
Push carpet  
Padded sport wheel  
Accent stripping  
Ski eye

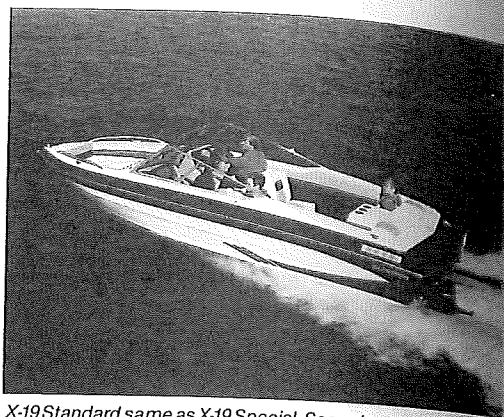
## OPTIONS

MerCruiser or OMC controls  
Side and stern curtains  
Tonneau cover  
Custom mooring cover  
Walk-thru curtain  
Soft top boot

## ENGINE OPTIONS

2.5 MerCruiser  
3.0 MerCruiser  
3.0 OMC

# X-19



X-19 Standard same as X-19 Special. See color options pg. 14-15

## SPECIFICATIONS

LOA 18'8"  
Beam 88 1/4"  
Depth 42 1/8"  
Maximum Depth 57 1/2"  
LOA on Trailer 23'0"  
Rack and Pinion Steering  
Boat Ht. on Trailer 71"  
Max. Load 1200 lbs.  
Max. Pers. 8 or 1100 lbs.

Approx. Wt. Excl. Engine 1150 lbs.  
Ice Box Capacity 35 qt.  
Transom Width 85 1/2"  
Max. Horsepower N/A  
Motor Shaft Length N/A  
Cockpit Depth 29 1/2"  
Fuel Capacity 27 gal.  
NMMA Certified

Draft: A. Drive Unit Up 19"  
B. Drive Unit Down 36 1/2"

## STANDARD FEATURES

Fold out sleeper seats  
Aft jump seats  
Hand laid fiberglass construction  
Insulated ice chest  
Color coordinated upholstery  
Walk-thru tempered glass windshield  
Bilge pump and blower  
Anodized aluminum bow rails and boarding ladder  
Stainless steel bow eye  
Navigation lights with removable stern light  
Open bow with cushioned seating  
Molded-in swim platform with chrome grab handles  
4 tie-down cleats  
Lockable glove compartment  
In-handle trim control  
Meets and exceeds Coast Guard flotation requirements  
Storage under bow seats, sun lounge, jump seats, plus 2 side storage trays  
AM/FM stereo cassette  
Soft top with concealed storage  
2 Coaxial speakers

Instrument panel with:  
speedometer, tachometer, electric fuel gauge, trim gauge, voltmeter, oil pressure gauge, engine temperature gauge plus switches for bilge pump, blower, horn and lights  
Drink holders  
Concealed electric horn  
In-floor ski locker  
Ski eye  
Plush carpet  
Built-in 27 gallon fuel tank  
Padded dash  
Padded sport wheel  
Accent striping

## OPTIONS

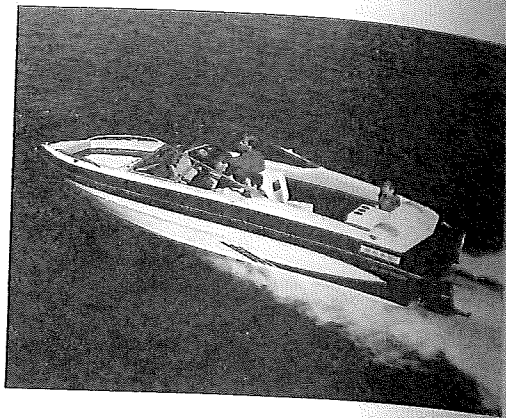
MerCruiser or OMC controls  
Custom mooring cover  
Walk-thru curtain  
Soft top boot  
Side and stern curtains  
Tonneau cover

## ENGINE OPTIONS

2.5 MerCruiser  
3.0 MerCruiser  
3.7 MerCruiser  
2.3 OMC  
3.0 OMC  
4.3 OMC



# X-19 SPECIAL



## SPECIFICATIONS

LOA 18'8"  
Beam 88 1/4"  
Depth 42 1/8"  
Maximum Depth 57 1/2"  
LOA on Trailer 23'0"  
Rack and Pinion Steering  
Max. Load 1200 lbs.  
Max. Pers. 8 or 1100 lbs.

Approx. Wt. Excl. Engine 1150 lbs.  
Ice Box Capacity 35 qt  
Transom Width 85 1/2"  
Max. Horsepower N/A  
Motor Shaft Length N/A  
Cockpit Depth 29 3/4"  
Boat Ht. on Trailer 71"  
Fuel Capacity 27 gal  
NMMA Certified

Draft: A. Drive Unit Up 19"  
B. Drive Unit Down 36 1/2"

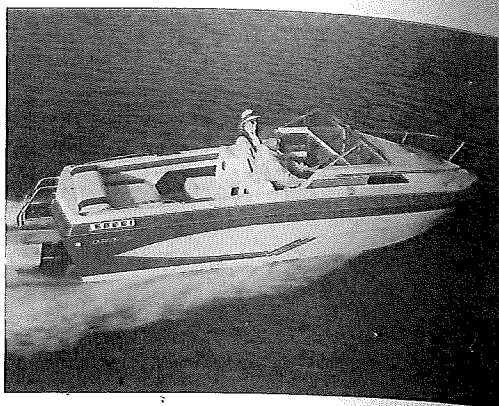
**STANDARD FEATURES**  
Fold out sleeper seats  
All jump seats  
All sun lounge  
Hand laid fiberglass construction  
Insulated ice chest  
Color coordinated upholstery  
Walk-thru tempered glass windshield  
Bilge pump and blower  
Anodized aluminum bow rails and boarding ladder  
Stainless steel bow eye  
Navigation lights with removable stern light  
Open bow with cushioned seating  
Molded-in swim platform with chrome grab handles  
4 tie-down cleats  
Lockable glove compartment  
In-handle trim control  
Meets and exceeds Coast Guard flotation requirements  
Storage under bow seats, sun lounge, jump seats, plus 2 side storage trays  
AM/FM stereo cassette

Soft top with concealed storage  
2 coaxial speakers  
Instrument panel with: speedometer, tachometer, electric fuel gauge, voltmeter, oil pressure gauge, engine temperature gauge plus switches for bilge pump, blower, horn and lights  
Drink holders  
Concealed electric horn  
In-floor ski locker  
Ski eye  
Plush carpet  
Built-in 27 gallon fuel tank  
Padded dash  
Padded sport wheel  
Accent striping

**OPTIONS**  
MerCruiser controls  
Custom mooring cover  
Walk-thru curtain  
Soft top boot  
Side and stern curtains  
Tonneau cover

**ENGINE OPTION**  
3.0 MerC only

# CX-19



## SPECIFICATIONS

LOA 18'10½"  
Beam 87"  
Depth 57"  
LOA on Trailer 22'¼"  
Rack and Pinion Steering  
Max. Load 1200 lbs.  
Max. Persons 8 or 1200 lbs.

Approx. Wt. Excl. Engine 1405 lbs.  
Ice Box Capacity 24 qt.  
Transom Width 83¼"  
Cockpit Depth 36½"  
Max. Horsepower N/A  
Motor Shaft Length N/A  
Fuel Capacity 31 gal.  
NMMA Certified

## STANDARD FEATURES

All jump seats  
Jumpseats convert to full width sun lounge  
Insulated ice chest  
Tempered glass windshield with center vent  
Oversized smoked plexiglass hatch for easy bow access  
Bilge pump and blower  
Stainless steel bow rails  
Stainless steel bow eye  
In-handle trim control  
Storage under lounge seats, jump seats, cabin bunk cushions, plus 2 side storage trays  
Soft top with concealed storage  
Instrument panel with: speedometer, tachometer, electric fuel gauge, voltmeter, oil pressure gauge, engine temperature gauge, trim gauge, plus switches for bilge pump, blower, horn and lights  
Drink holders  
Teak swim platform with anodized aluminum boarding ladder  
Ski eye  
Electric Horn  
Split-level back-to-back sleeper seats  
Lockable hasp for cabin securement  
Built-in 31 gallon fuel tank

Sleeping accommodations for 4  
Portable head with hold down assembly  
2 removable center cushions in cabin provide concealment for portable head, seated legroom, or full length and width cabin bunk  
AM/FM stereo cassette  
2 coaxial speakers  
Accent striping  
Cabin windows  
Padded sport wheel  
Padded dash  
Cabin light  
Cockpit courtesy light  
Stainless steel taffrails

## OPTIONS

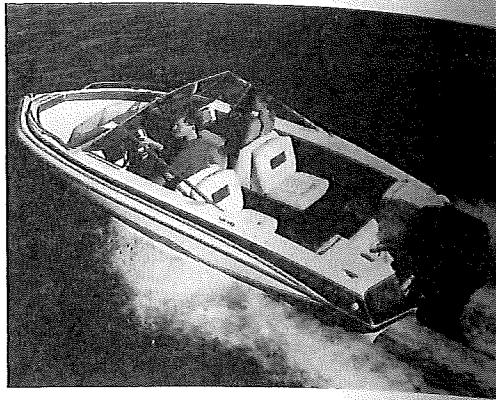
MerCruiser or OMC controls  
Side and stern curtains  
Two ice chests/fish lockers with helmsman seats (driver's seat only adjusts), ice chest/fish locker w/helmsman seat on one side only  
Custom mooring cover  
Soft top boot  
Camper canvas  
Extra boarding ladder with teak platform

## ENGINE OPTIONS

2.5 MerCruiser  
3.0 MerCruiser  
3.7 MerCruiser  
3.0 OMC  
4.3 OMC



# SSV-162



## SPECIFICATIONS

|                          |                                   |
|--------------------------|-----------------------------------|
| LOA 16'2 1/4"            | Approx. Wt. Excl. Engine 750 lbs. |
| Beam 79 1/4"             | Ice Box Capacity 30 qt.           |
| Depth 38 3/4"            | Transom Width 77 1/4"             |
| Maximum Depth 51"        | Maximum Horsepower 90             |
| LOA on Trailer 19'       | Motor Shaft Length 20'            |
| Steering Mechanical      | Cockpit Depth 25 1/2"             |
| Max. Load 1290 lbs.      | Boat Ht. on Trailer 72"           |
| Max. Pers. 6 or 805 lbs. | Fuel Capacity 18 gal.             |
|                          | NMMA Certified                    |

Draft: A. Drive Unit Up 11 1/2"  
B. Drive Unit Down 29 1/4"

## STANDARD FEATURES

- Hand laid fiberglass construction
- Built-in 18 gallon fuel tank
- Instrument panel with: speedometer, tachometer, fuel gauge
- Color coordinated upholstery
- 4 tie-down cleats
- Push carpet
- Insulated ice chest under forward bow cushion
- Storage under bow seats and jump seats
- Meets and exceeds Coast Guard flotation requirements
- Drink holders
- Stainless steel bow rails
- Stainless steel boarding ladder
- In-floor ski locker with hinged teak lid & lock

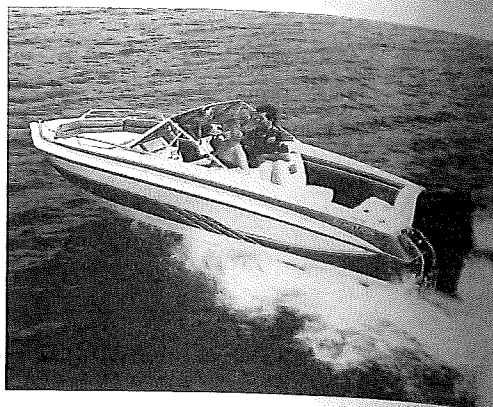
- Soft top with boot
- Walk-thru tempered glass windshield
- Fold out sleeper seats
- Aft jump seats
- Concealed electric horn
- Stainless steel bow eye and ski eyes
- Navigation lights with removable stern light
- Open bow with cushioned seating
- Adjustable driver's seat
- Accent striping
- Padded sport wheel
- Bilge pump

## OPTIONS

- Tonneau bow cover
- Side and stern curtains
- Custom mooring cover
- Soft top boot cover
- 50 or 85 H.P. Force Outboard Engine



# SSV-172



## SPECIFICATIONS

|                           |                                   |
|---------------------------|-----------------------------------|
| LOA 17'¼"                 | Approx. Wt. Excl. Engine 955 lbs. |
| Beam 83"                  | Ice Box Capacity 25 qt.           |
| Depth 46¾"                | Transom Width 75"                 |
| Maximum Depth 59"         | Maximum Horsepower 125            |
| LOA on Trailer 21'9"      | (not to exceed 315 lbs.)          |
| Rack & Pinion Steering    | Motor Shaft Length 20"            |
| Max. Load 1550 lbs.       | Cockpit Depth 23½"                |
| Max. Pers. 7 or 1015 lbs. | Boat Ht. on Trailer 73"           |
|                           | Fuel Capacity 24 gal.             |
|                           | NMMA Certified                    |

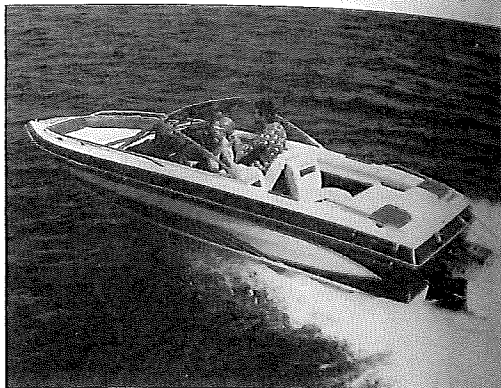
Draft: A. Drive Unit Up 10½"  
B. Drive Unit Down 28"

**STANDARD FEATURES**  
Hand laid fiberglass construction  
Built-in 24 gallon fuel tank  
Instrument panel with: speedometer, tachometer, and fuel gauge  
Color coordinated upholstery  
4 tie-down cleats  
Plush carpet  
25-quart ice chest  
Storage under bow seats and jump seats  
All storage compartments  
Meets and exceeds Coast Guard flotation requirements  
Drink holders  
Stainless steel bow rails  
Stainless steel boarding ladder  
Lockable glove compartment

In-floor ski locker with hinged lid and lock  
Soft top with boot  
Walk-thru curtain  
Walk-thru tempered glass windshield  
Fold out sleeper seats  
Aft jump seats  
Concealed electric horn  
Navigation lights with removable stern light  
Adjustable driver's seat  
Open bow with cushioned seating  
Teak step pads  
Bilge pump  
Padded dash

**OPTIONS**  
Side and stern curtains  
Custom mooring cover  
Tonneau cover  
85 or 125 Force Outboard

# SSV-175



## SPECIFICATIONS

|                                |                                    |
|--------------------------------|------------------------------------|
| LOA 17'11/4"                   | Approx. Wt. Excl. Engine 1200 lbs. |
| Beam 87 3/4"                   | Ice Box Capacity 18 qt.            |
| Depth 44"                      | Transom Width 85 1/2"              |
| Maximum Depth 55"              | Max. Horsepower N/A                |
| LOA on Trailer 21'1"           | Motor Shaft Length N/A             |
| Rack and Pinion Steering       | Cockpit Depth 29 1/2"              |
| Max. Load 1100 lbs.            | Boat Ht. on Trailer 74"            |
| Max. Pers. Load 7 or 1050 lbs. | Fuel Capacity 21 gal               |
|                                | NMMA Certified                     |

Draft: A. Drive Unit Up 15 1/2"  
 B. Drive Unit Down 30 1/2"

## STANDARD FEATURES

- Adjustable driver's seat & passenger seat
- Fold-out sleeper seats
- Removable aft jump seats
- Aft sun lounge
- Built in 21 gallon fuel tank
- Open bow with cushioned seating
- In-handle trim control
- Teak swim platform with boarding ladder
- Walk-thru tempered glass windshield
- Meets and exceeds Coast Guard flotation requirements
- Color coordinated upholstery
- Navigation lights with removable stern light
- Insulated ice chest
- Instrument panel with:
  - speedometer, tachometer, electric fuel gauge, trim gauge, voltmeter, oil pressure gauge, engine temperature gauge plus switches for bilge pump, blower, horn and lights
- Storage under bow seats, jump seats, and sun lounge
- Hand laid fiberglass construction
- Bilge pump and blower

- AM/FM stereo cassette
- 2 coaxial speakers
- Cockpit courtesy lights
- Circuit breakers
- 4 tie-down cleats
- Stainless steel bow rails
- Stainless steel taffrails
- Soft top with concealed storage
- Soft top w/boot
- MerCruiser or OMC controls
- Concealed electric horn
- Drink holders
- Lockable glove compartment
- Side tray storage
- In-floor ski locker with hinged teak lid & lock
- Plush carpet
- Padded sport wheel
- Accent striping
- Ski tow ring
- Teak step pads

## OPTIONS

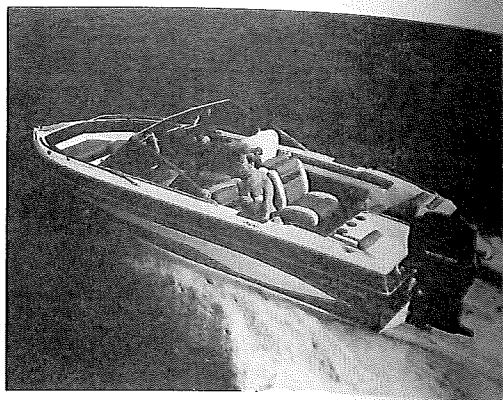
- Side and stern curtains
- Tonneau cover
- Custom mooring cover
- Full swim platform

## ENGINE OPTIONS

- 2.5 MerCruiser
- 3.0 MerCruiser
- 3.7 MerCruiser
- 4.3 MerCruiser
- 3.0 OMC
- 4.3 OMC



# SSV-177



## SPECIFICATIONS

|                                |                                    |
|--------------------------------|------------------------------------|
| LOA 17'1¼"                     | Approx. Wt. Excl. Engine 1200 lbs. |
| Beam 87¾"                      | Ice Box Capacity 18 qt.            |
| Depth 44"                      | Transom Width 85½"                 |
| Maximum Depth 55"              | Max. Horsepower 140                |
| LOA on Trailer 21'1"           | Motor Shaft Length N/A             |
| Dual Cable Steering            | Cockpit Depth 29½"                 |
| Max. Load 1600 lbs.            | Boat Ht. on Trailer 74"            |
| Max. Pers. Load 7 or 1050 lbs. | Fuel Capacity 24 gal.              |
|                                | NMMA Certified                     |

Draft: A. Drive Unit Up 15½"  
B. Drive Unit Down 30½"

**STANDARD FEATURES**  
Adjustable driver seat  
Fold-out sleeper seats  
Aft jump seats  
Built in 24 gallon fuel tank  
Open bow with hinged cushioned seating  
Teak swim platform with boarding ladder  
Walk-thru tempered glass windshield  
Meets and exceeds Coast Guard flotation requirements  
Color coordinated upholstery  
Navigation lights with removable stern light  
Insulated ice chest  
Instrument panel with: speedometer, tachometer, electric fuel gauge  
Storage under bow seats, jump seats  
Hand laid fiberglass construction  
Bilge pump

AM/FM stereo cassette  
2 coaxial speakers  
Dual cable steering  
Circuit breakers  
Cockpit courtesy light  
4 tie-down cleats  
Stainless steel bow rails  
Stainless steel taffrails  
Soft top with boot  
Concealed electric horn  
Drink holders  
Lockable glove compartment  
Side tray storage  
In-floor ski locker with hinged teak lid & lock  
Plush carpet  
Padded sport wheel  
Stainless steel bow eye  
Accent stripping  
Ski eyes  
Teak step pads

## OPTIONS

Extra boarding ladder w/teak platform  
Side and stern curtains  
Tonneau cover  
Custom mooring cover

# SSV-185



## SPECIFICATIONS

LOA 18'1 1/4"  
 Beam 88 3/4"  
 Depth 44"  
 Maximum Depth 58"  
 LOA on Trailer 21'7"  
 Steering Rack and Pinion  
 Max. Load 1200 lbs.  
 Max. Pers. 8 or 1100 lbs.

Approx. Wt. Excl. Engine 1340 lbs.  
 Ice Box Cap. 20 qt.  
 Transom Width 85"  
 Max. Horsepower N/A  
 Motor Shaft Length N/A  
 Cockpit Depth 27"  
 Boat Ht. on Trailer 75"  
 Fuel Capacity 33 gal.  
 NMMA Certified

Draft: A. Drive Unit Up 16 1/2"  
 B. Drive Unit Down 32"

## STANDARD FEATURES

Stainless steel bow rails  
 Stainless steel taffrails  
 Storage under bow seats,  
 under jump seats, under  
 motorcover and in  
 side trays  
 In-floor ski locker with hinged  
 teakwood lid and lock  
 Concealed electric horn  
 Lockable glove compartment  
 Passenger grab handle  
 Built-in foot rests  
 Built-in 33 gallon fuel tank  
 Built-in ice chest  
 Teakwood swim platform  
 with stainless steel ladder  
 Carpeted storage areas  
 Walk-thru curtain  
 Hand-laid fiberglass  
 construction  
 Drink holders: including  
 stepped design which  
 accommodates foam-  
 insulated-type drinkholder  
 Wrap-around bow seats with  
 backrests and hinged  
 cushions  
 Navigation lights with  
 removable stern light  
 Plush carpet  
 Deluxe instrument panel  
 with: speedometer, tachometer,  
 fuel gauge, trim gauge, voltmeter,  
 oil pressure gauge, water  
 temperature gauge, and  
 switches for bilge pump/  
 blower, panel/interior  
 lights, navigation/anchor  
 lights and horn

Stainless steel bow eye and  
 ski eyes  
 Bilge pump and blower  
 Fold-out sleeper seats  
 Cockpit courtesy lights  
 Walk-thru tempered glass  
 windshield  
 Easy-up soft top system with  
 boot cover and hidden  
 storage  
 Teak step pads  
 Padded dash  
 AM/FM stereo cassette  
 2 coaxial speakers  
 Fore and aft adjustment  
 for driver's seat  
 Circuit breakers  
 Ski tow ring  
 Sun deck with gas spring  
 assist  
 MerCruiser or OMC controls

## OPTIONS

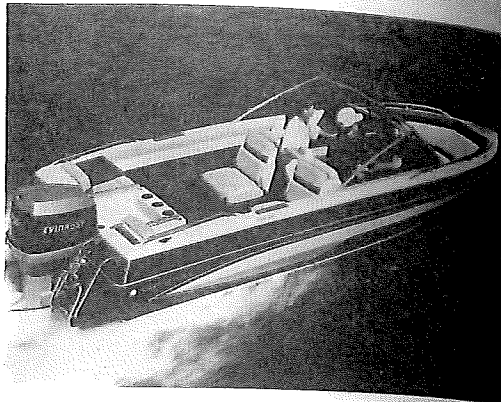
Stainless steel propeller  
 (5.7 MerC or OMC)  
 Full swim platform  
 Side and stern curtains  
 Tonneau bow cover  
 Custom mooring cover

## ENGINE OPTIONS

4.3 MerCruiser  
 3.7LX MerCruiser  
 5.0 MerCruiser  
 4.3LX MerCruiser  
 5.0LX MerCruiser  
 5.7 MerCruiser  
 4.3 OMC  
 4.3LX OMC  
 5.0 OMC  
 5.0LX OMC  
 5.7 OMC



# SSV-187



## SPECIFICATIONS

LOA 18'1¼"  
Beam 88¾"  
Depth 44"  
Maximum Depth 58"  
LOA on Trailer 21'7"  
Dual Cable Steering  
Max. Load 1675 lbs.  
Max. Pers. 8 or 1100 lbs.

Approx. Wt. Excl. Engine 1350 lbs.  
Ice Box Cap. 26 qt.  
Transom Width 85¼"  
Motor Shaft Length 20"  
Max. Horsepower 150  
Cockpit Depth 27"  
Boat Ht. on Trailer 75"  
Fuel Capacity 33 gal.  
NMMA Certified

Draft: A. Drive Unit Up 14"  
B. Drive Unit Down 30"

**STANDARD FEATURES**  
Stainless steel bow rails  
Stainless steel taffrails  
Storage under bow seats,  
under jump seats, under  
splashwell and in  
side trays  
In-floor ski locker with  
hinged teak lid and lock  
Concealed electric horn  
Lockable glove compartment  
Passenger grab handle  
Built-in foot rests  
Built-in 33 gallon fuel tank  
Built-in ice chest under  
port jumpseat  
Teakwood swim platform  
with stainless steel  
boarding ladder  
Deluxe instrument panel  
with: speedometer, tachometer,  
fuel gauge and switches for bilge pump/  
accessory, panel/interior  
lights, navigation/anchor  
lights and horn  
Carpeted storage areas  
Hand-laid fiberglass  
construction  
Drink holders:  
including stepped design  
which accommodates  
foam-insulated-type  
drinkholder  
Wrap-around bow seats with  
backrests

Navigation lights with  
removable stern light  
Walk-thru curtain  
Plush carpet  
Stainless steel bow eye and  
ski eyes  
Level flotation  
Bilge pump  
Fold-out sleeper seats  
Aft jump seats  
Cockpit courtesy lights  
Walk-thru tempered glass  
windshield  
Easy-up soft top system with  
boot cover stores under  
splashwell  
Teak step pads  
Transom height of 21½" for  
improved performance  
AM/FM stereo cassette  
2 coaxial speakers  
Circuit breakers at dash  
Fore and aft adjustment  
for driver's seat  
Padded dash  
Hinged bow cushions

## OPTIONS

Side and stern curtains  
Tonneau cover  
Custom mooring cover  
Extra boarding ladder  
with teak platform



# SSV-195



## SPECIFICATIONS

|                           |                                    |
|---------------------------|------------------------------------|
| LOA 19'1 1/4"             | Approx. Wt. Excl. Engine 1300 lbs. |
| Beam 87 3/4"              | Ice Box Capacity 18 qt.            |
| Depth 44"                 | Transom Width 85 1/2"              |
| Maximum Depth 55"         | Max. Horsepower N/A                |
| LOA on Trailer 23'1"      | Motor Shaft Length N/A             |
| Rack and Pinion Steering  | Cockpit Depth 29 1/2"              |
| Max. Load 1200 lbs.       | Boat Ht. on Trailer 74 1/2"        |
| Max. Pers. 8 or 1100 lbs. | Fuel Capacity 24 gal.              |
|                           | NMMA Certified                     |

Draft: A. Drive Unit Up 16"  
B. Drive Unit Down 31"

## STANDARD FEATURES

Fold-out sleeper seats  
Removable aft jump seats  
Aft sun lounge  
Hand laid fiberglass construction  
Insulated ice chest  
Color coordinated upholstery  
Walk-thru tempered glass windshield  
Bilge pump and blower  
Teak swim platform with boarding ladder  
Stainless steel bow eye  
Navigation lights with removable stern light  
Open bow with hinged cushioned seating  
4 tie-down cleats  
Lockable glove compartment  
Passenger grab handle  
In-handle trim control  
Meets and exceeds Coast Guard flotation requirements  
Storage under bow seats, sun lounge, jump seats, plus 2 side storage trays  
Soft top with boot  
Deluxe instrument panel with: speedometer, tachometer, electric fuel gauge, voltmeter, trim gauge, oil pressure gauge, engine temperature gauge plus switches for bilge pump, blower, horn and lights

Ski tow ring  
AM/FM stereo cassette  
2 coaxial speakers  
Circuit breakers  
Drink holders  
Concealed electric horn  
In-floor ski locker with hinged teak lid & lock  
Teak step pads  
Plush carpet  
Built-in 24 gallon fuel tank  
Adjustable driver's seat  
Padded sport wheel  
Accent striping  
Cockpit courtesy lights  
Stainless steel bow rails  
Stainless steel taffrails  
MerCruiser or OMC controls

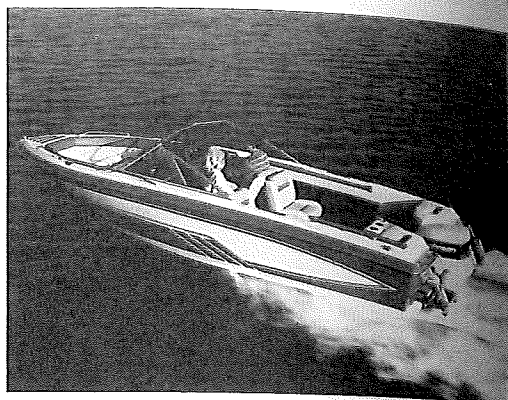
## OPTIONS

Stainless steel propeller (5.7 MerC or OMC)  
Custom mooring cover  
Side and stern curtains  
Tonneau cover  
Full swim platform

## ENGINE OPTIONS

3.7LX MerCruiser  
4.3 MerCruiser  
4.3LX MerCruiser  
5.0 MerCruiser  
5.0LX MerCruiser  
5.7 MerCruiser  
4.3 OMC  
4.3LX OMC  
5.0 OMC  
5.0LX OMC  
5.7 OMC

# SSV-197



## SPECIFICATIONS

LOA 19'5"  
Beam 96"  
Depth 45"  
Maximum Depth 61"  
LOA on Trailer 22'6"  
Dual Cable Steering  
Approx. Wt. Excl. Engine 1700 lbs.  
Max. Load 2300 lbs.  
Max. Persons 9 or 1600 lbs.

Max. Horsepower 200  
Motor Shaft Length 20"  
Cockpit Depth 30"  
Fuel Capacity 31 gal.  
Boat Ht. on Trailer 7'6"  
Transom width 93 1/2"  
NMMA Certified

## STANDARD FEATURES

Stainless steel bow rails  
Tall rails  
Storage under hinged bow seats, under jump seats, under splashwell and in side trays  
In-floor ski locker with teak-wood hinged lid and lock  
Concealed electric horn  
Lockable glove compartment  
Padded dash  
Passenger grab handle  
Built-in foot rests  
Built-in 31 gallon fuel tank  
Built-in ice chest under port jump seat  
Twin teakwood swim platforms with stainless steel boarding ladders  
Deluxe instrument panel with: VDO gauges, speedometer, tachometer, fuel gauge and switches for bilge pumps/accessory, panel/interior lights, navigation/anchor lights and horn  
Carpeted storage areas  
Hand-laid fiberglass construction  
Drink holders: including stepped design which accommodates foam-insulated-type drinkholder

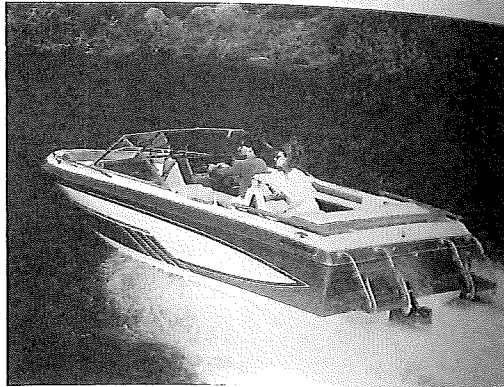
Wrap-around bow seats with hinged cushions  
In-floor storage locker with hinge and lock.  
Navigation lighting with removable stern light  
Walk-thru curtain  
Plush carpet  
Stainless steel bow eye and ski eyes  
Level flotation  
Bilge pump  
Fold out sleeper seats  
Aft jump seats  
Adjustable driver's seat  
Cockpit courtesy lights  
Chart lighter  
Walk-thru tempered glass windshield  
Easy-up soft top system with boot cover and hidden storage  
Teak step pads  
Transom height of 21 1/4" for improved performance  
AM/FM stereo cassette  
2 coaxial speakers  
Circuit breakers

## OPTIONS

Side and stern curtains  
Tonneau bow cover  
Custom mooring cover



# SSV-199



## SPECIFICATIONS

|                             |                                    |
|-----------------------------|------------------------------------|
| LOA 19'4 1/2"               | Approx. Wt. Excl. Engine 1660 lbs. |
| Beam 96"                    | Motor Shaft Length N/A             |
| Depth 45"                   | Cockpit Depth 30"                  |
| Maximum Depth 61"           | Boat Ht. on Trailer 76"            |
| Max. Load 1750 lbs.         | Fuel Capacity 31 gal.              |
| Max. Persons 9 or 1750 lbs. | Max. Horsepower N/A                |
| LOA on Trailer 22'6 1/4"    | NMMA Certified                     |
| Steering Rack and Pinion    | Transom Width 93"                  |

## STANDARD FEATURES

- Aft lid with gas spring assist
- Stainless steel bow rails
- Taffrails
- Storage under hinged bow seats, under jump seats, under sunlounge and in side trays
- In-floor ski locker with hinged teak lid and lock
- Concealed electric horn
- Lockable glove compartment
- Passenger grab handle
- Built-in foot rests
- Built-in 31 gallon fuel tank
- Twin teakwood swim platforms with stainless steel boarding ladders
- Deluxe instrument panel with: VDO gauges, speedometer, tachometer, fuel gauge, trim gauge, oil pressure gauge, engine temp. gauge, volt-meter and switches for bilge pump/accessory, panel/interior lights, navigation/anchor lights and horn
- Carpeted storage areas
- Walk-thru curtain
- Hand-laid fiberglass construction
- Drink holders: including stepped design which accommodates foam-insulated-type drinkholder
- Wrap-around bow seats with hinged bow cushions
- Navigation lights with removeable stern light
- Plush carpet
- Padded dash

- Adjustable driver's seat
- Fold out sleeper seats
- Aft jump seats
- Stainless steel bow eye and ski eyes
- Bilge pump and blower
- Cockpit courtesy lights
- Walk-thru tempered glass windshield
- Easy-up soft top system with boot cover and concealed storage
- Bow and stern teakwood step pads
- AM/FM stereo cassette
- 4 coaxial speakers
- Power antenna
- Circuit breakers
- Built-in ice chest
- Ski tow ring
- Chart lighter
- MerCruiser or OMC controls

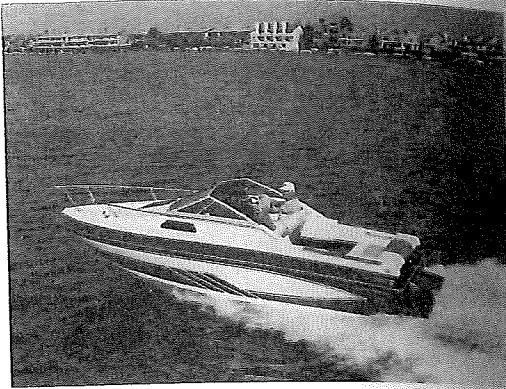
## OPTIONS

- Stainless propeller (5.7 MerCruiser or OMC)
- Side and stern curtains
- Tonneau cover
- Custom mooring cover
- Full swim platform

## ENGINE OPTIONS

- 4.3 MerCruiser
- 3.7LX MerCruiser
- 5.0 MerCruiser
- 4.3LX MerCruiser
- 5.0LX MerCruiser
- 5.7 MerCruiser
- 350 MerC Magnum w/ss prop
- 4.3 OMC
- 4.3LX OMC
- 5.0LX OMC
- 5.7 OMC

# SSV-215



## SPECIFICATIONS

LOA 20'11 1/4"  
 Beam 96"  
 Depth N/A  
 Maximum Depth N/A  
 LOA on Trailer 27'1 1/4"  
~~Dual Cable Steering~~

Approx. Wt. Excl. Engine 2400 lbs.  
 Max. Persons 9 or 1800 lbs.

Max. Horsepower N/A  
 Motor Shaft Length N/A  
 Cockpit Depth 40 1/2"  
 Fuel Capacity 62 gal.  
 Boat Ht. on Trailer N/A  
 Transom width 93 1/2"  
 NMMA Certified

→ RACK + PINION

## STANDARD FEATURES

VDO Gauges: Speedometer, tachometer, fuel gauge, trim gauge, oil pressure gauge, engine temp. gauge, voltmeter  
 Electric horn  
 Blower  
 International navigation lighting  
 Bilge pump w/automatic float switch  
 Removable cabin table  
 Deluxe AM/FM stereo cassette  
 Power antenna  
 4 coaxial speakers  
 Circuit breakers  
 62 gallon fuel tank  
 Two rod holders  
 Removable ice chest  
 High/low cabin seating adjusts to provide forward V-bunk  
 Drink holders  
 Adjustable driver's seat  
 Alt sun lounge w/gas spring assist  
 Teak step pads  
 Cockpit courtesy lights  
 Tinted temper glass windshield w/side vents

CABIN Windows  
 Bow Hatch

Stainless steel bow rails  
 Ski tow ring  
 Soft top w/boot  
 Removable aft jump seats  
 Lockable teak cabin w/door/hatch  
 Enclosed head w/porta potti  
 MerCruiser or OMC controls  
 Tilt steering wheel

## OPTIONS

Sleeper seat(s)  
 Helmsman seat(s)  
 Ice chest/fish locker(s) w/helmsman seats

## ENGINE OPTIONS

4.3 MerCruiser  
 3.7LX MerCruiser  
 5.0 MerCruiser  
 4.3LX MerCruiser  
 5.0LX MerCruiser  
 5.7 MerCruiser  
 350 Magnum  
 7.4 MerCruiser  
 4.3 OMC  
 4.3LX OMC  
 5.0 OMC  
 5.0LX OMC  
 5.7 OMC

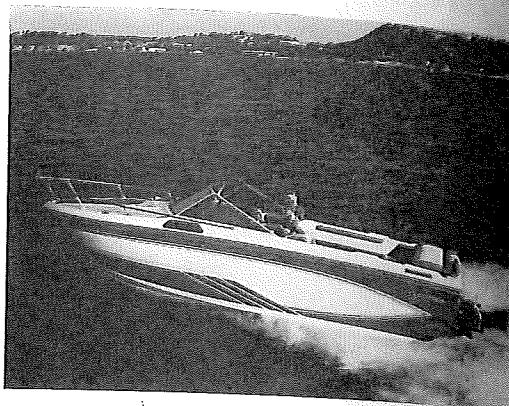
Per G.W. 11/12/87  
 5.7, 350, 7.4 Merc  
 5.7 OMC

Full F. Bee Glass  
 SW.M Platform

CANVASS  
 Modeling Cover  
 S.S. Prop For 5.7's



# SSV-233



## SPECIFICATIONS

|                             |                                    |
|-----------------------------|------------------------------------|
| LOA 23'3 3/4"               | Approx. Wt. Excl. Engine 2650 lbs. |
| Beam 96"                    | Ice Box Cap. 50 qt.                |
| Depth 62 1/2"               | Transom Width 94 1/2"              |
| Maximum Depth 81"           | Max. Horsepower N/A                |
| LOA on Trailer 27'9"        | Motor Shaft Length N/A             |
| Steering Rack and Pinton    | Cockpit Depth 33 1/2"              |
| Boat Ht. on Trailer 97 3/4" | Fuel Capacity 87 gal.              |
| NMMA Certified              | Max. Load 1500 lbs.                |
|                             | Max. Persons 8 or 1500             |
|                             | Draft: A. Drive Unit Up 23 1/2"    |
|                             | B. Drive Unit Down 40 1/2"         |

## ENGINE OPTIONS

|                        |           |
|------------------------|-----------|
| 4.3 MerC               | 4.3 OMC   |
| 3.7LX MerC             | 4.3LX OMC |
| 4.3LX MerC             | 5.0 OMC   |
| 5.0 MerC               | 5.0LX OMC |
| 5.0LX MerC             | 5.7 OMC   |
| 5.7 MerC               |           |
| 350 Mag MerC w/ss prop |           |
| 7.4 MerC w/ss prop     |           |

**STANDARD FEATURES**

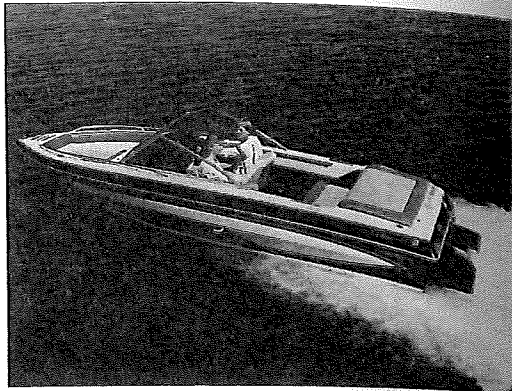
- AM/FM stereo cassette
- 4 coaxial speakers — 2 in cockpit and 2 in cabin
- Power antenna
- Circuit breakers
- Carpeted storage areas
- Hand-laid fiberglass construction with integrated fiberglass stringers
- Custom molded dash with VDO instrumentation: speedometer, tachometer, electric fuel gauge, oil pressure gauge, engine temperature gauge, trim gauge, voltmeter and switches for bilge pump, blower, horn, lights, and accessories, voltmeter and circuit breakers
- Storage under cockpit floor with teakwood lid, under each of the three cabin cushions, cabin side trays, under sleeper seat and forward of bow cabin bulkhead
- Teak step pads
- Built-in 87 gallon fuel tank
- Automatic bilge pump
- In-handle trim control
- Bilge blower
- Power steering
- Stainless steel bow rails
- Ski storage under aft lid
- MerCruiser or OMC control
- Welded frame windshield with side vents
- Drink holders: including stepped design which accommodates foam-insulated-type drinkholder
- Oversized smoked plexiglass cabin side windows/hatch for easy bow access
- Deep plush marine carpet
- Taffrails
- Soft top with boot cover
- Cockpit courtesy lights
- Navigation lighting
- Concealed soft top storage under aft lid
- Sunlounge w/gas spring assist

- Cabin lights, chart lights
- Built-in corner cabinet
- Full teakwood swim platform with stainless steel boarding ladder
- Bow eye and ski ring
- Dual trumpet horn
- Lockable teakwood cabin doors
- Portable head with hold-down assembly
- Seated headroom for five in cabin
- Cocktail table with mounting locations in cabin or cockpit
- Sleeping accommodations for four
- Fore and aft seat adjustment on driver's seat
- Available seating arrangements:
  - 2 sleeper seats;
  - 1 sleeper seat and 1 helmsman seat;
  - 1 sleeper seat and 1 helmsman seat with galley.
- Galley assembly includes ice box, water tank, alcohol stove, stainless steel sink, and electric water pump.
- Sun lounge with removable cushions on outboard sides for access aft — no jump seats — gets bench seat
- 2 removable ice chests stow under bench seat (1 ice chest w/galley option)
- Cigarette lighter and ash trays
- Cabin mirror on forward bulkhead

## OPTIONS

- Hydraulic leveller with trim indicators
- Side and stern curtains
- Camper canvas
- Bow anchor locker
- Stainless steel propeller (5.7 MerC or OMC)
- Through-transom exhaust (350, 7.4 Litre)
- Custom mooring cover
- Cockpit enclosure canvas
- Tilt steering wheel

# GX-185



## SPECIFICATIONS

|                           |                                    |
|---------------------------|------------------------------------|
| LOA 18'1 1/4"             | Approx. Wt. Excl. Engine 1340 lbs. |
| Beam 88 3/4"              | Ice Box Cap. 20 qt.                |
| Depth 44"                 | Transom Width 85 3/4"              |
| Maximum Depth 58"         | Max. Horsepower N/A                |
| LOA on Trailer 21'7"      | Motor Shaft Length N/A             |
| Steering Rack and Pinion  | Cockpit Depth 27"                  |
| Max. Load 1200 lbs.       | Boat Ht. on Trailer 75"            |
| Max. Pers. 8 or 1100 lbs. | Fuel Capacity 33 gal.              |
|                           | NMMA Certified                     |

Draft: A. Drive Unit Up 16 1/2"  
B. Drive Unit Down 32"

## STANDARD FEATURES

- Stainless steel bow rails
- Stainless steel taffrails
- Storage under bow seats, under bench seat, under motorcover and in side trays
- In-floor ski locker with hinged teakwood lid and lock
- Concealed electric horn
- Lockable glove compartment
- Passenger grab handle
- Built-in foot rests
- Built-in 33 gallon fuel tank
- Built-in ice chest
- Full swim platform with stainless steel ladder
- Carpeted storage areas
- Walk-thru curtain
- Hand-laid fiberglass construction
- Drink holders: including stepped design which accommodates foam-insulated-type drinkholder
- Wrap-around bow seats with backrests and hinged bottom cushions
- Navigation lights with removable stern light
- Push carpet
- Deluxe instrument panel with: speedometer, tachometer, fuel gauge, trim gauge, voltmeter, oil pressure gauge, water temperature gauge, and switches for bilge pump/blower, panel/interior lights, navigation/anchor lights and horn
- Stainless steel bow eye and ski eyes

- Bilge pump and blower
- Bench and bucket seats
- Aft sun lounge with gas spring assist
- Cockpit courtesy lights
- Walk-thru tempered glass windshield
- Easy-up soft top system with boot cover and hidden storage
- Bow and stern teakwood step pads
- Padded dash
- AM/FM stereo cassette
- 4 coaxial speakers
- Power antenna
- Fore and aft adjustment for driver's and passenger seats
- Ski pylon
- MerCruiser or OMC controls

## OPTIONS

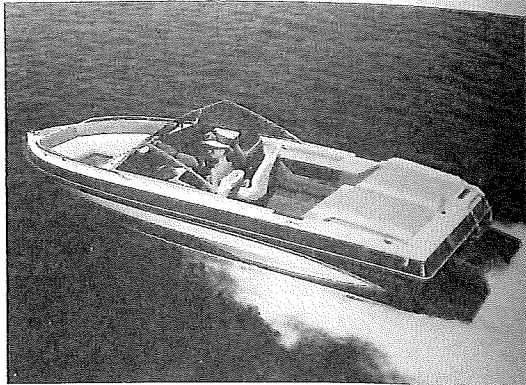
- Stainless steel propeller (5.7 MerC or OMC)
- Side and stern curtains
- Tonneau bow cover
- Custom mooring cover

## ENGINE OPTIONS

- 4.3 MerCruiser
- 3.7LX MerCruiser
- 5.0 MerCruiser
- 4.3LX MerCruiser
- 5.0LX MerCruiser
- 5.7 MerCruiser
- 4.3 OMC
- 4.3LX OMC
- 5.0LX OMC
- 5.7 OMC



# GX-195



## SPECIFICATIONS

|                           |                                    |
|---------------------------|------------------------------------|
| LOA 19'1 1/4"             | Approx. Wt. Excl. Engine 1300 lbs. |
| Beam 87 3/4"              | Ice Box Capacity 18 qt.            |
| Depth 44"                 | Transom Width 85 3/4"              |
| Maximum Depth 55"         | Max. Horsepower N/A                |
| LOA on Trailer 23'1"      | Motor Shaft Length N/A             |
| Rack and Pinion Steering  | Cockpit Depth 27"                  |
| Max. Load 1200 lbs.       | Boat Ht. on Trailer 74 1/2"        |
| Max. Pers. 8 or 1100 lbs. | Fuel Capacity 24 gal.              |
|                           | NMMA Certified                     |

Draft: A. Drive Unit Up 16"  
B. Drive Unit Down 31"

## STANDARD FEATURES

- Adjustable driver seat and passenger seat
- Bench and swivel bucket seating
- Aft sun lounge with gas spring assist
- Hand laid fiberglass construction
- Insulated ice chest
- Color coordinated upholstery
- Walk thru tempered glass windshield
- Bilge pump and blower
- Stainless steel bow rails
- Full swim platform with stainless steel boarding ladder
- Stainless steel bow eye
- Navigation lights with removable stern light
- Open bow with hinged cushions
- 4 tie-down cleats
- Lockable glove compartment
- Convenience handle
- In-handle trim control
- Meets and exceeds Coast Guard flotation requirements
- Storage under bow seats, sun lounge, bench seat, plus 2 side storage trays
- Soft top with concealed storage
- Ski pylon
- AM/FM stereo cassette
- 4 coaxial speakers
- Power antenna
- Circuit breakers

Deluxe Instrument panel with: speedometer, tachometer, electric fuel gauge, voltmeter, trim gauge, oil pressure gauge, engine temperature gauge plus switches for bilge pump, blower, horn and lights

- Drink holders
- Concealed electric horn
- In-floor ski locker with hinged teak lid & lock
- Teak step pads
- Push carpet
- Built-in 24 gallon fuel tank
- Padded sport wheel
- Accent striping
- Cockpit courtesy lights
- Stainless steel taffrails
- Stainless steel bow rails
- Soft top with boot
- MerCruiser or OMC controls

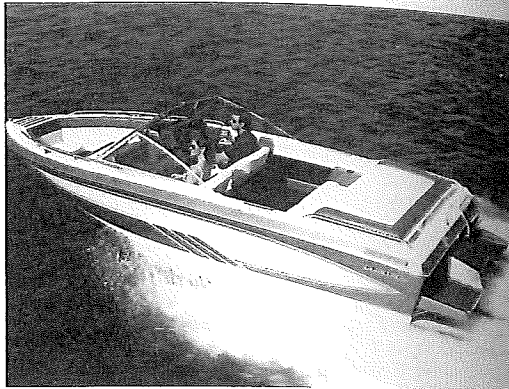
## OPTIONS

- Stainless steel propeller (5.7 MerC or OMC)
- Custom mooring cover
- Side and stern curtains
- Tonneau cover

## ENGINE OPTIONS

- 3.7LX MerCruiser
- 4.3 MerCruiser
- 4.3LX MerCruiser
- 5.0 MerCruiser
- 5.0LX MerCruiser
- 5.7 MerCruiser
- 4.3 OMC
- 4.3LX OMC
- 5.0 OMC
- 5.0LX OMC
- 5.7 OMC

# GX-199



## SPECIFICATIONS

|                             |                                    |
|-----------------------------|------------------------------------|
| LOA 19'4½"                  | Approx. Wt. Excl. Engine 1660 lbs. |
| Beam 96"                    | Motor Shaft Length N/A             |
| Depth 45"                   | Cockpit Depth 30"                  |
| Maximum Depth 61"           | Boat Ht. on Trailer 76"            |
| Max. Load 1750 lbs.         | Fuel Capacity 31 gal.              |
| Max. Persons 9 or 1600 lbs. | Max. Horsepower N/A                |
| LOA on Trailer 22'6¼"       | NMMA Certified                     |
| Steering Rack and Pinion    | Transom Width 93"                  |

## STANDARD FEATURES

Electric engine hatch lift  
Stainless steel bow rails  
Stainless steel taffrails  
Storage under bow seats, under bench seat, under sunlounge and in side trays  
In-floor ski locker with hinged teak lid and lock  
Engine compartment lighting  
Concealed electric horn  
Lockable glove compartment  
Passenger grab handle  
Built-in foot rests  
Built-in 31 gallon fuel tank  
Full swim platform with stainless steel boarding ladder  
Deluxe instrument panel with VDO gauges, speedometer, tachometer, fuel gauge, trim gauge, oil pressure gauge, engine temp. gauge, voltmeter, in-dash depth finder and switches for bilge pump/accessory, panel/interior lights, navigation/anchor lights and horn  
Carpeted storage areas  
Walk-thru curtain  
Hand-laid fiberglass construction  
Drink holders: including stepped design which accommodates foam-insulated-type drinkholder  
Wrap-around bow seats with backrests and hinged bow cushions

Navigation lights with removable stern light  
Plush carpet  
Adjustable driver and passenger seats  
Bench and swivel bucket seating  
Stainless steel bow eye  
Bilge pump and blower  
Cockpit courtesy lights  
Walk-thru tempered glass windshield  
Easy-up soft top system with boot cover and concealed storage  
Teak step pads  
AM/FM stereo cassette  
4 coaxial speakers  
Power antenna  
Circuit breakers  
Built-in ice chest  
Ski pylon  
Chart lighter  
Tilt steering wheel  
Padded dash  
MerCruiser or OMC controls

## OPTIONS

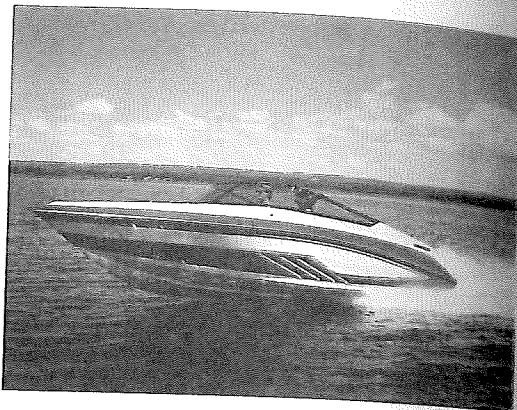
Side and stern curtains  
Tonneau cover  
Custom mooring cover  
Through-transom exhaust (350 Magnum and 7.4 Litre)

## ENGINE OPTIONS

5.7 MerCruiser  
350 MerC Magnum w/ss prop  
5.7 OMC



# GX-239



## SPECIFICATIONS

LOA 22'7 3/4"

Beam 96"

Depth 50"

Max. Load-Pers.  
& Gear 1500 lbs.

Approx. Wt. Excl. Engine 2000 lbs.

Cockpit Depth 31 1/4"

Transom Width 90"

NMMA Certified

Draft: A. Drive Unit Up 12 1/4"

B. Drive Unit Down 29 3/4"

## STANDARD FEATURES

VDO Gauges:  
Speedometer, tachometer,  
fuel gauge, trim gauge,  
oil pressure gauge,  
engine temp. gauge  
voltmeter  
Electric horn  
Blower  
Navigation lighting  
AM/FM stereo cassette  
Bilge pump w/automatic  
float switch  
Power antenna  
4 coaxial speakers  
Circuit breakers  
62 gallon fuel tank  
Insulated ice chest  
Digital depth finder  
Lockable glove box  
High/low cabin seating  
adjusts to provide  
forward V-bunk  
Drink holders  
Adjustable Driver's Seat  
Alt Sun Lounge  
w/electric lift  
Cockpit courtesy lights  
Soft top w/boot  
Lockable cabin door/hatch  
Wrap-around windshield  
Welded stainless bow rail  
Stainless steel ski pylon

Stainless steel deck cleats  
Built-in swim platform  
Full glass liner/  
stringer system  
Tilt steering  
Slide-out stainless steel  
boarding ladder  
Full-width stainless  
steel stern rail  
Stainless steel cockpit  
handrails

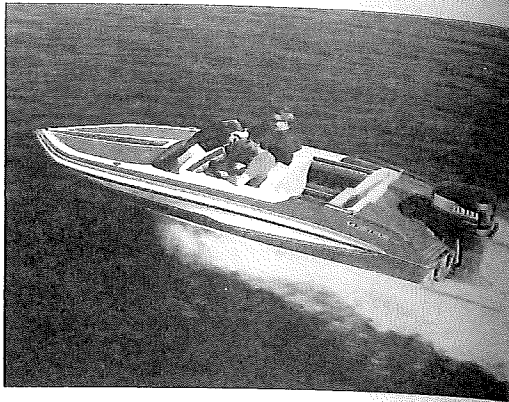
## OPTIONS

Stainless steel propeller  
(5.7 MerC or OMC)  
Mooring cover  
Side & stern curtains  
Color coordinated soft top  
Color coordinated side &  
stern curtains  
Silent choice exhaust  
system  
Snap-in carpet for  
cockpit & cabin  
Halon system  
Portable head

## ENGINE OPTIONS

5.7 MerCruiser  
350 Magnum w/SS Prop  
7.4 w/SS Prop  
5.7 OMC  
350 King Cobra  
460 King Cobra

# CVX-16



## SPECIFICATIONS

|                              |                                  |
|------------------------------|----------------------------------|
| LOA 16'8"                    | Approx. Wt. Excl. Engine 750 lbs |
| Beam 78½"                    | Ice Box Cap. 34 qt               |
| Depth 32"                    | Transom Width 77"                |
| Maximum Depth 40"            | Max. Horsepower 125              |
| LOA on Trailer 19'1¼"        | Motor Shaft Length 20"           |
| Dual Cable Steering          | Cockpit Depth 26½"               |
| Max. Load: 1200 lbs.         | Boat Ht. on Trailer 55"          |
| Max. Pers. 5 or 750 lbs.     | Fuel Capacity 18 gal             |
| NMMA Certified               |                                  |
| Draft: A. Drive Unit Up 10½" |                                  |
| B. Drive Unit Down 28"       |                                  |

**STANDARD FEATURES**  
Built-in ice chest  
Bow storage compartment  
Aft storage compartments  
VDO instrument include:  
speedometer, tachometer,  
fuel gauge  
Stainless steel boarding  
ladder  
Stainless steel stern rails  
Carpeted storage areas  
Hand-laid fiberglass  
construction  
Bucket and bench seating,  
bucket seats swivel  
Padded aft bench seat with  
ice chest and storage  
beneath  
Drink holders: including  
stepped design  
which accommodates  
foam-insulated-type  
drinkholder

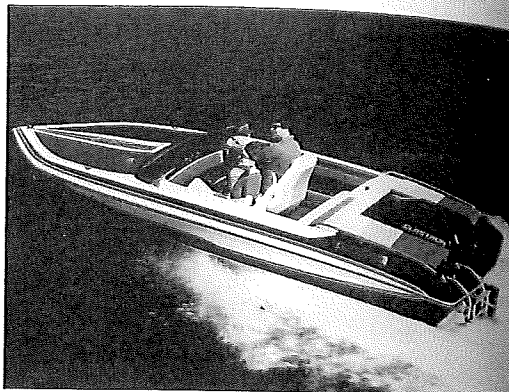
Storage under splashwell  
Side tray storage  
Storage tray built into dash  
Custom sport wheel  
Built-in 18 gallon fuel tank  
Stainless steel bow eye and  
ski eyes  
Navigation lights with  
removable stern light  
Level foam flotation  
Plush carpet  
Concealed electric horn  
Contoured tinted plexiglass  
windshield  
Bow ski locker  
Lockable glove compartment  
Teak step pads  
Bilge Pump

## OPTIONS

Custom mooring cover



# CVX-18



## SPECIFICATIONS

|                                 |                                   |
|---------------------------------|-----------------------------------|
| LOA 18'1½"                      | Approx. Wt. Excl. Engine 950 lbs. |
| Beam 90"                        | Ice Box Cap. 34 qt.               |
| Depth 37"                       | Transom Width 86"                 |
| Maximum Depth 43¼"              | Max. Horsepower N/A               |
| LOA on Trailer 21¾"             | Motor Shaft Length N/A            |
| Rack and Pinion Steering        | Cockpit Depth 25½"                |
| Boat Ht. on Trailer 58½"        | Fuel Capacity 27 gal.             |
| Max. Load 900 lbs.              | NMMA Certified                    |
| Max. Persons Load 6 or 900 lbs. |                                   |
| Draft: A. Drive Unit Up 12½"    |                                   |
| B. Drive Unit Down 30"          |                                   |

**STANDARD FEATURES**  
Built-in ice chest  
Custom sport wheel  
Bow eye and ski eyes  
Stainless steel boarding ladder  
Stainless steel stern rails  
2 bow storage areas  
2 padded stern lids with storage underneath  
Deluxe grab bar  
Instrument panel with:  
VDO gauges, speedometer, tachometer, fuel gauge, oil pressure gauge, engine temperature gauge, voltmeter, trim gauge and switches for bilge pump, blower, horn and lights  
Circuit breakers  
Carpeted storage areas  
Built-in 27 gallon fuel tank  
Drink holders: including stepped design which accommodates foam-insulated-type drinkholder

Hand-laid fiberglass construction  
Side tray storage  
Cockpit courtesy light  
Swivel bucket seats  
Lockable glove compartment  
Bench seat with ice chest and storage beneath  
Concealed electric horn  
Navigation lights with removable stern light  
Contoured tinted plexiglass windscreen  
Positive foam flotation  
Plush carpet  
Adjustable driver's seat  
MerCruiser or OMC controls

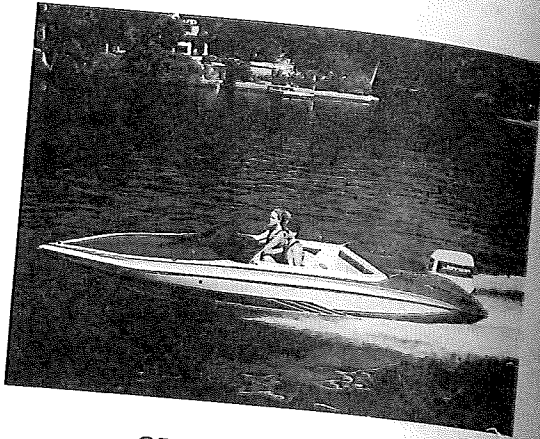
### OPTIONS

Custom mooring cover  
Stainless steel propeller (5.7 MerC or OMC)

### ENGINE OPTIONS

5.0LX MerCruiser  
5.7 MerCruiser  
5.0LX OMC  
5.7 OMC

# CVX-20



## SPECIFICATIONS

LOA 20'3"  
Beam 90 1/4"  
Depth 37"  
Maximum Depth 48"  
LOA on Trailer 21'9 1/2"  
Dual Cable Steering  
Max. Load 1515 lbs.  
Max. Pers. 6 or 1025 lbs.

Approx. Wt. Excl. Engine 1050 lbs.  
Ice Box Cap. 18 qt.  
Transom Width 84 3/4"  
Max. Horsepower 200  
Motor Shaft Length 20"  
Cockpit Depth 26"  
Fuel Cap. 27 gal.  
Boat Ht. on Trailer 63"  
NMMA Certified

Draft: A. Drive Unit Up 12 1/2"  
B. Drive Unit Down 30"

## STANDARD FEATURES

2 bow storage areas  
Stainless steel stern rails  
Instrument panel with:  
VDO gauges, speedometer,  
tachometer, fuel gauge and  
switches for bilge pump,  
horn, and lights  
Deluxe grab bar  
Custom sport wheel  
Positive foam flotation  
Stainless steel boarding  
ladder  
Molded-in swim platform  
Carpeted storage areas  
Concealed electric horn  
Contoured tinted plexiglass  
windshield  
Navigation lights  
Bow cleats  
Full width wrap-around  
rear seat

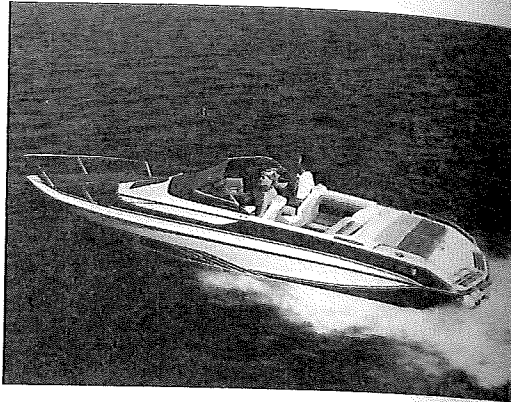
Lockable glove compartment  
Built-in ski storage  
Drink holders: including  
stepped design which  
accommodates foam-  
insulated-type drinkholder  
Swivel bucket seats  
Aft bench seat  
Adjustable driver's seat  
Deluxe center console with  
lockable storage  
Courtesy light  
Plush pile carpet  
Bilge pump  
Deluxe side trays  
Built-in 27 gallon fuel tank  
Ski eyes  
Built-in ice chest  
Teak step pads

## OPTIONS

Custom mooring cover



# CVX-23



## SPECIFICATIONS

|                                 |                                    |
|---------------------------------|------------------------------------|
| LOA 23'4 3/4"                   | Approx. Wt. Excl. Engine 1750 lbs. |
| Beam 91 1/2"                    | Ice Box Cap. 48 qt.                |
| Depth 50"                       | Transom Width 85"                  |
| Maximum Depth 58 3/4"           | Max. Horsepower N/A                |
| LOA on Trailer 26'2 1/2"        | Motor Shaft Length N/A             |
| Rack and Pinion Steering        | Cockpit Depth 32 3/4"              |
| Max. Load 1200 lbs.             | Boat Ht. on Trailer 74 1/4"        |
| Max. Pers. 8 or 1200 lbs.       | Fuel Capacity 50 gal.              |
|                                 | NMMA Certified                     |
| Draft: A. Drive Unit Up 12 1/4" |                                    |
| B. Drive Unit Down 29 3/4"      |                                    |

**STANDARD FEATURES**  
 AM/FM stereo cassette  
 4 coaxial speakers  
 Circuit breakers  
 Electric power antenna  
 Stainless steel boarding ladder  
 Molded-in swim platform with teak step pads  
 Lockable teakwood cabin doors  
 Cabin seating converts to full sleep area  
 MerCruiser or OMC controls  
 Carpeted storage areas  
 Engine compartment lighting  
 Hand-laid fiberglass construction  
 Padded aft sun lounge with deep storage beneath  
 Padded side storage trays  
 Venturi windshield  
 Stainless steel bow and stern rails  
 Engine hatch with gas spring assist  
 Drink holders: including stepped design which accommodates foam-insulated-type drinkholder  
 Instrument panel with: VDO gauges, speedometer, tachometer, electric fuel gauge, oil pressure gauge, engine temperature gauge, voltmeter  
 Plush carpet  
 Electric horn  
 Cabin lights  
 Power steering  
 Built-in 50 gallon fuel tank

Spacious daycruiser cabin  
 Plexiglass bow hatch with inside latches  
 Navigation lights with removable stern light  
 Swivel bucket seats  
 Removable ice chest stores under stern sun lounge  
 Padded aft bench with ski storage beneath  
 Teak step pads  
 Automatic bilge pump  
 Bilge blower  
 Cockpit courtesy light  
 Bow eye  
 Tilt steering wheel  
 Adjustable driver and passenger seats  
 Cabin mirror on forward bulkhead  
 Ski pylon  
 Plug-in teakwood table with drinkholders

**OPTIONS**  
 Stainless steel propeller (5.7 MerC or OMC)  
 Enclosure canvas  
 Custom mooring cover  
 Depth finder  
 Bimini top  
 Side and stern curtains  
 Wrap around windshield; w/wrap around windshield only; soft top (white or color coordinated), side & stern curtains (white or color coordinated)

**ENGINE OPTIONS**  
 5.7 MerCruiser  
 350 MerC Magnum w/ss prop  
 5.7 OMC

# SS-198



## SPECIFICATIONS

|                             |                                    |
|-----------------------------|------------------------------------|
| LOA 18'10 1/2"              | Approx. Wt. Excl. Engine 1405 lbs. |
| Beam 87"                    | Ice Box Capacity 24 qt.            |
| Depth 57"                   | Transom Width 83 1/2"              |
| LOA on Trailer 22' 1/4"     | Cockpit Depth 36 1/2"              |
| Rack and Pinion Steering    | Max. Horsepower N/A                |
| Max. Load 1200 lbs.         | Motor Shaft Length N/A             |
| Max. Persons 8 or 1200 lbs. | Fuel Capacity 33 gal.              |
|                             | NMMA Certified                     |

## STANDARD FEATURES

- All jump seats
- Jumpseats convert to full width sun lounge
- Insulated ice chest
- Tempered glass windshield with center vent
- Oversized smoked plexiglass hatch for easy bow access
- Bilge pump and blower
- Stainless steel bow rails
- Stainless steel bow eye
- In-handle trim control
- Storage under jump seat, cabin bunk cushions, plus 2 side storage trays
- Soft top with concealed storage and boot
- Instrument panel with:
  - VDO gauges, speedometer, tachometer, electric fuel gauge, voltmeter, oil pressure gauge, engine temperature gauge, trim gauge, plus switches for bilge pump, blower, horn and lights
- Drink holders
- Built-in 31 gallon fuel tank
- Ski eye
- Electric Horn
- Teak step pads
- Lockable cabin door
- Two rod storage racks
- Two rod holders
- Sleeping accommodations for 4
- Portable head with hold down assembly
- Floor storage locker

- 2 removable center cushions in cabin provide concealment for portable head, seated legroom, or full length and width cabin bunk
- AM/FM stereo cassette
- 2 coaxial speakers
- Accent striping
- Cabin windows
- Padded sport wheel
- Padded dash
- Cabin light
- MerCruiser or OMC controls
- Cockpit courtesy light
- Stainless steel bow rails
- 2 ice chest/fish lockers w/helmman seats (driver's seat only adjusts)

## OPTIONS

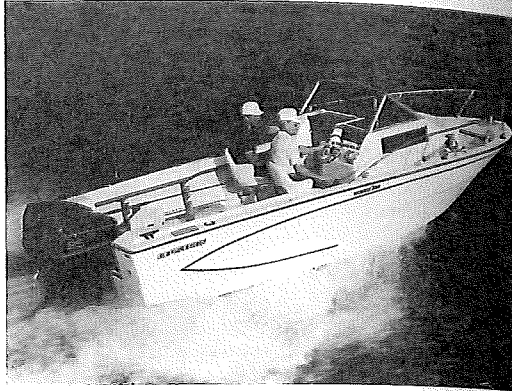
- Side and stern curtains
- Custom mooring cover
- Camper canvas
- Boarding ladder with teak platform, port or stbd.

## ENGINE OPTIONS

- 2.5 MerCruiser
- 3.0 MerCruiser
- 3.7 MerCruiser
- 3.7LX MerCruiser
- 4.3 MerCruiser
- 4.3LX MerCruiser
- 5.0 MerCruiser
- 5.0LX MerCruiser
- 5.7 MerCruiser
- 3.0 OMC
- 4.3 OMC
- 4.3LX OMC
- 5.0 OMC
- 5.0LX OMC
- 5.7 OMC



# SS-212



## SPECIFICATIONS

|                             |                                    |
|-----------------------------|------------------------------------|
| LOA 20'7"                   | Approx. Wt. Excl. Engine 2030 lbs. |
| Beam 96"                    | Ice Box Cap. 99 qt.                |
| Depth 64 1/4"               | Transom Width 91 1/2"              |
| Maximum Depth 80 3/4"       | Max. Horsepower 220                |
| Motor Shaft Length          | Cockpit Depth 24"                  |
| Twin 20" Single 25"         | Boat Ht. on Trailer 97 1/2"        |
| LOA on Trailer 23'9 3/4"    | Steering Mechanical                |
| Max. Load 2280 lbs.         | Fuel capacity 75 gal.              |
| Max. Pers. 10 or 1480 lbs.  | NMMA Certified                     |
| Draft: A. Drive Unit Up 19" |                                    |
| B. Drive Unit Down 46"      |                                    |

**STANDARD FEATURES**  
VDO fuel gauge  
Electric trumpet horn  
Padded seat forward of center cabin with storage beneath for soft top  
Stainless steel bow rails  
Corrosion-resistant hardware  
Enclosed lighted cabin with:  
    cushioned vee berths and in-bulkhead cabinets, space for optional head, sliding cabin windows, lockable cabin door with lockable hatch cover and ample storage  
Self-bailing cockpit with fiberglass liner  
Built-in 75 gallon fuel tank with electric gauge  
Large in-floor fish-wells/ baitwells with fiberglass lids  
2 rod holders  
Teak rod racks under gunwales  
Recessed rod holders  
Removable splashwell transom board  
Removable battery access panel in splashwell

Non-skid deck and floor  
Non-skid 14" walkway around center cabin  
Hand-laid fiberglass construction  
Tempered glass tinted windshield  
High-volume dual bilge pump with automatic float switch  
Custom instrument panel  
Soft top with boot cover  
Cabin lights  
Navigation lighting  
2 helmsman chairs  
Stainless steel steering wheel with adjustable driver's seat  
Cockpit courtesy lights  
Stainless steel bow and ski eyes  
4 ice chests/fish lockers  
Teak step pads

## OPTIONS

Speedometer  
Helm enclosure canvas  
Portable head  
Twin Force 85 hp engines  
Custom mooring cover  
Tachometer

## ENGINE & PERFORMANCE INFORMATION

The following pages contain data about sterndrives offered in our 1988 product. The approximate weight information on each boat is weighed dry, or without engine or fuel, so adding the weight of the engine and 7 pounds per gallon will give you a very accurate total weight figure.

The following performance data has been compiled by Glastron's Engineering/Boat Test group, and is to be used as a guide in discussing specific models' overall performance. The data will vary depending on water conditions, altitude, wind, etc., and these variances should be noted prior to quoting performance data to the consumer. Glastron will provide additional engine data as it becomes available so that you can speak to speed, fuel consumption and other questions the customer might have regarding Glastron's performance.

|                       |  |
|-----------------------|--|
| <b>MODEL:</b>         | <b>MERCRUISER 2.5 LITRE</b>                        |
| Horsepower            | 120  |
| Cylinders             | 4  |
| Cubic Inches          | 153  |
| Compression Ratio     | 8.5:1  |
| Max. Recommended RPM  | 4200-4600  |
| Circuit Breaker       | 40 amp Thermal                                     |
| Lower Unit Gear Ratio | 1.98:1   |
| Tilt                  | Power  |
| Trim                  | Power  |
| Length                | 33 1/4"  |
| Width                 | 21-3/8"  |
| Height                | 19 1/2" (above crankshaft CL)<br>27-5/8" (overall) |
| Weight                | 595 lbs.   |

|                       |  |
|-----------------------|--|
| <b>MODEL:</b>         | <b>MERCRUISER 3.0 LITRE</b>                        |
| Horsepower            | 130  |
| Cylinders             | 4  |
| Cubic Inches          | 181  |
| Compression Ratio     | 8.5:1  |
| Max. Recommended RPM  | 4200-4600  |
| Circuit Breaker       | 40 amp Thermal                                     |
| Lower Unit Gear Ratio | 1.98:1   |
| Tilt                  | Power  |
| Trim                  | Power  |
| Length                | 33 1/4"  |
| Width                 | 21-3/8"  |
| Height                | 19 1/2" (above crankshaft CL)<br>27-5/8" (overall) |
| Weight                | 620 lbs. (pkg. weight)                             |

|                       |  |
|-----------------------|--|
| <b>MODEL:</b>         | <b>MERCRUISER 3.7 LITRE</b>                        |
| Horsepower            | 165  |
| Cylinders             | 4  |
| Cubic Inches          | 224  |
| Compression Ratio     | 8.8:1  |
| Max. Recommended RPM  | 4200-4600  |
| Circuit Breaker       | 40 amp Thermal                                     |
| Lower Unit Gear Ratio | 1.84:1   |
| Tilt                  | Power  |
| Trim                  | Power  |
| Length                | 36-5/16"   |
| Height                | 19 3/4" (above crankshaft CL)<br>28 1/4" (overall) |
| Width                 | 23-5/8"  |
| Weight                | 722 lbs. (pkg. weight)                             |

|                       |                               |
|-----------------------|-------------------------------|
| <b>MODEL:</b>         | <b>MERCRUISER 4.3 LITRE</b>   |
| Horsepower            | 175                           |
| Cylinders             | 6                             |
| Cubic Inches          | 262                           |
| Compression Ratio     | 9.3:1                         |
| Max. Recommended RPM  | 4400-4800                     |
| Circuit Breaker       | 40 amp Thermal                |
| Lower Unit Gear Ratio | 1.84:1                        |
| Tilt                  | Power                         |
| Trim                  | Power                         |
| Length                | 31-13/16"                     |
| Width                 | 29 1/4" (overall)             |
| Height                | 20 1/2" (above crankshaft CL) |
| Weight                | 802 lbs. (pkg. weight)        |



**MODEL:** **MERCUISER 3.7 LITRE LX**  
w/Power Steering

Horsepower 180  
Cylinders 4  
Cubic Inches 224  
Compression Ratio 8.8:1  
Max. Recommended RPM 4400-4800  
Circuit Breaker 40 Amp Thermal  
Lower Unit Gear Ratio 1.84:1  
Tilt Power  
Trim Power  
Length 37-13/16"  
Width 26"  
Height 19 3/4" (above crankshaft CL)  
28 1/4" (overall)  
Weight 735 lbs. (pkg. weight)

**MODEL:** **MERCUISER 5.0 LITRE**  
w/Power Steering

Horsepower 200  
Cylinders 8  
Cubic Inches 305  
Compression Ratio 8.5:1  
Max. Recommended RPM 4200-4600  
Circuit Breaker 40 Amp Thermal  
Lower Unit Gear Ratio 1.65:1  
Tilt Power  
Trim Power  
Length 36-3/16"  
Width 28 1/2"  
Height 20 3/4" (above crankshaft CL)  
28 1/2" (overall)  
Weight 893 lbs.

**MODEL:** **MERCUISER 4.3 LITRE LX**  
w/Power Steering

Horsepower 205  
Cylinders 6  
Cubic Inches 262  
Compression Ratio 9.3:1  
Max. Recommended RPM 4400-4800  
Circuit Breaker 40 Amp Thermal  
Lower Unit Gear Ratio 1.84:1  
Tilt Power  
Trim Power  
Length 31-13/16"  
Width 29 1/4"  
Height 20" (above crankshaft CL)  
Weight 802 lbs.

**MODEL:** **MERCUISER 5.0 LITRE LX**  
w/Power Steering

Horsepower 230  
Cylinders 8  
Cubic Inches 305  
Compression Ratio 8.5:1  
Max. Recommended RPM 4200-4600  
Circuit Breaker 40 Amp Thermal  
Lower Unit Gear Ratio 1.50:1  
Tilt Power  
Trim Power  
Length 36-3/16"  
Width 28 1/2"  
Height 20" (above crankshaft CL)  
27 3/4" (overall)  
Weight 893 lbs. (pkg. weight)

**MODEL:** **MERCUISER 5.7 LITRE**  
w/Power Steering

Horsepower 260  
Cylinders 8  
Cubic Inches 350  
Compression Ratio 9.0:1  
Max. Recommended RPM 4200-4600  
Circuit Breaker 40 Amp Thermal  
Lower Unit Gear Ratio 1.50:1  
Tilt Power  
Trim Power  
Length 36-3/16"  
Width 28 1/2"  
Height 20" (above crankshaft CL)  
27 3/4" (overall)  
Weight 907 lbs. (pkg. weight)

**MODEL:** **MERCUISER 350 MAGNUM**  
w/Power Steering

Horsepower 270  
Cylinders 8  
Cubic Inches 350  
Compression Ratio 9.0:1  
Max. Recommended RPM 4200-4600  
Circuit Breaker 40 Amp Thermal  
Lower Unit Gear Ratio 1.50:1  
Tilt Power  
Trim Power  
Length 36-15/16"  
Width 28-7/8"  
Height 20-7/8" (overall)  
Weight 938 lbs.

*\*Stainless steel propeller*

**MODEL:** **MERCUISER 7.4 LITRE**  
w/Power Steering

Horsepower 330  
Cylinders 8  
Cubic Inches 454  
Compression Ratio 8.5:1  
Max. Recommended RPM 4200-4600  
Circuit Breaker 40 Amp Thermal  
Lower Unit Gear Ratio 1.32:1  
Tilt Power  
Trim Power  
Length 39"  
Width 32"  
Height 20-11/16" (overall)  
Weight 1125 lbs.

*\*Stainless steel propeller*

**MODEL:** **MERCUISER 454 MAGNUM**  
w/Power Steering

Horsepower 365  
Cylinders 8  
Cubic Inches 454  
Compression Ratio 8.8:1  
Max. Recommended RPM 4600-4500  
Circuit Breaker 40 amp Thermal  
Lower Unit Gear Ratio 1.50:1  
Tilt Power  
Trim Power  
Length 39  
Width 32  
Height 20-1/16"  
Weight 1115

**MODEL:** **OMC 2.3 COBRA**

Horsepower 128  
Cylinders 4  
Cubic Inches 140  
Compression Ratio 9.0:1  
Max. Recommended RPM 5200-5600  
Circuit Breaker Fusible Link  
Lower Unit Gear Ratio 2.0:1  
Tilt Power  
Trim Power  
Length 33-5/8"  
Width 24"  
Height 19-1/4"  
Weight 600 lbs.

**MODEL:** **OMC 3.0 COBRA**

Horsepower 130  
Cylinders 4  
Cubic Inches 181  
Compression Ratio 8.5:1  
Max. Recommended RPM 4200-4600  
Circuit Breaker Fusible Link  
Lower Unit Gear Ratio 1.71:1  
Tilt Power  
Trim Power  
Length 33 1/2"  
Width 24"  
Height 31-5/8" (overall)  
Weight 680 lbs.

**MODEL:** **OMC 4.3 COBRA**  
w/Power Steering

Horsepower 175  
Cylinders 6  
Cubic Inches 262  
Compression Ratio 9.3:1  
Max. Recommended RPM 4200-4600  
Circuit Breaker Fusible Link  
Lower Unit Gear Ratio 1.68:1  
Tilt Power  
Trim Power  
Length 31-3/8"  
Width 25"  
Height 32-1/16" (overall)  
Weight 805 lbs.

**MODEL:** **OMC 4.3 LX**  
w/Power Steering

Horsepower 205  
Cylinders 6  
Cubic Inches 262  
Compression Ratio 9.3:1  
Max. Recommended RPM 4400-4800  
Circuit Breaker Fuse  
Lower Unit Gear Ratio 1.68:1  
Tilt Power  
Trim Power  
Length 31-3/8"  
Width 25"  
Height 32-1/16" (overall)  
Weight 805 lbs.



**MODEL:** OMC 5.0 COBRA  
Horsepower 200  
Cylinders 8  
Cubic Inches 305  
Compression Ratio 9.3:1  
Max. Recommended RPM 4200-4600  
Circuit Breaker Fusible Link  
Lower Unit Gear Ratio 1.50:1  
Tilt Power  
Trim Power  
Length 36-1/4"  
Width 27-3/4"  
Height 20-3/16" (overall)  
Weight 906 lbs.

**MODEL:** OMC 5.0 LX  
w/Power Steering  
Horsepower 230  
Cylinders 8  
Cubic Inches 305  
Compression Ratio 8.5:1  
Max. Recommended RPM 4200-4600  
Circuit Breaker Fuse  
Lower Unit Gear Ratio 1.50:1  
Tilt Power  
Trim Power  
Length 35-3/8"  
Width 27-3/4"  
Height 32-7/8" (overall)  
Weight 916 lbs.

**MODEL:** OMC 5.7  
w/Power Steering  
Horsepower 260  
Cylinders 8  
Cubic Inches 350  
Compression Ratio 9.0:1  
Max. Recommended RPM 4200-4600  
Circuit Breaker In-line fuse  
Fuel Regular (94 oct. research)  
Lower Unit Gear Ratio 1.41:1  
Tilt Power  
Trim Power  
Length 36 1/4"  
Width 29"  
Height 19-7/8" (overall)  
28-7/16" (above crankshaft L)  
Weight 950 lbs.

**MODEL:** OMC 350 KING COBRA  
Horsepower 270  
Cylinders 8  
Cubic Inches 350  
Compression Ratio 9.3:1  
Max. Recommended RPM 4200-4600  
Circuit Breaker Fusible Link  
Lower Unit Gear Ratio 1.41:1  
Tilt Power  
Trim Power  
Length 36-1/4"  
Width 28"  
Height 20-7/8" (overall)  
Weight 906 lbs.

**MODEL:** OMC 460 KING COBRA  
Horsepower 335  
Cylinders 8  
Cubic Inches 460  
Compression Ratio 9.0:1  
Max. Recommended RPM 4400-4800  
Circuit Breaker Fusible Link  
Lower Unit Gear Ratio 1.43:1  
Tilt Power  
Trim Power  
Length 39-7/8"  
Width 33-1/2"  
Height 22-1/2"  
Weight 1200 lbs.

**BOAT MODEL: Z-16**

**ENGINE 50 H.P. FORCE  
PROP 10-3/8" x 11 1/2"**

| MPH            | RPM  | GPH | MPG |
|----------------|------|-----|-----|
| 15             |      | 3.2 | 4.6 |
| 26-28 (W.O.T.) | 5100 | 6.1 | 4.6 |

0-20 M.P.H. Acceleration: 5.5 Seconds

**BOAT MODEL: Z-16**

**ENGINE 85 H.P. FORCE  
PROP 13" x 17" ALUM.**

| MPH            | RPM  | GPH | MPG |
|----------------|------|-----|-----|
| 15             |      | 3.4 | 4.4 |
| 25             |      | 5.2 | 4.8 |
| 37-39 (W.O.T.) | 5200 | 9.8 | 3.9 |

0-20 M.P.H. Acceleration: 3.0 Seconds

**BOAT MODEL: X-16**

**ENGINE 3.0 LITRE  
MERCUISER  
PROP 13 3/4" x 21"**

| MPH   | RPM                     | GPH | MPG |
|-------|-------------------------|-----|-----|
| 15    | 2100                    | 3.6 | 4.2 |
| 25    | 2700                    | 4.0 | 6.3 |
| 35    | 3800                    | 7.3 | 4.8 |
| 43-45 | (Full Throttle)<br>4700 | —   | —   |

0-20 M.P.H. Acceleration: 3.6 Seconds

**BOAT MODEL: X-16**

**ENGINE 3.0  
MERCUISER  
PROP 13" x 19"**

| MPH   | RPM                     | GPH | MPG |
|-------|-------------------------|-----|-----|
| 15    | 2200                    | 3.6 | 4.2 |
| 25    | 2700                    | 4.0 | 6.3 |
| 35    | 3800                    | 7.3 | 4.8 |
| 43-45 | (Full Throttle)<br>4700 | —   | —   |

0-20 M.P.H. Acceleration: 3.7 Seconds

**BOAT MODEL: Z-17**

**ENGINE 85 H.P. FORCE  
13" x 17" ALUM.**

| MPH            | RPM  | GPH  | MPG |
|----------------|------|------|-----|
| 15             |      | 5.3  | 4.7 |
| 25             |      | 10.3 | 3.3 |
| 32-34 (W.O.T.) | 5200 | —    | —   |

0-20 M.P.H. Acceleration: 4.6 Seconds

**BOAT MODEL: Z-17**

**ENGINE 125 H.P. FORCE  
13" x 19" ALUM.**

| MPH            | RPM  | GPH  | MPG |
|----------------|------|------|-----|
| 15             |      | 3.9  | 3.9 |
| 25             |      | 4.9  | 4.1 |
| 35             |      | 11.8 | 3.0 |
| 42-44 (W.O.T.) | 5400 | 13.2 | 3.3 |

0-20 M.P.H. Acceleration: 3.8 Seconds



**BOAT MODEL: X-17**

**ENGINE 2.5 LITRE  
MERCUISER  
PROP 14" x 19"**

| MPH             | RPM  | GPH | MPG |
|-----------------|------|-----|-----|
| 15              | 2300 | 2.5 | 6.0 |
| 25              | 2900 | 4.0 | 6.3 |
| 35              | 3900 | 8.7 | 4.0 |
| (Full Throttle) |      | —   | —   |
| 39-41           | 4300 | —   | —   |

0-20 M.P.H. Acceleration: 3.7 Seconds

**BOAT MODEL: X-19**

**ENGINE 2.5 LITRE  
MERCUISER  
PROP 14" x 19"**

| MPH             | RPM  | GPH | MPG |
|-----------------|------|-----|-----|
| 10              | 1800 | 2.4 | 4.2 |
| 20              | 2900 | 3.0 | 6.7 |
| 35              | 3800 | 9.0 | 3.9 |
| (Full Throttle) |      | —   | —   |
| 39-41           | 4350 | —   | —   |

0-20 M.P.H. Acceleration: 3.8 Seconds

**BOAT MODEL: X-19/X-19 Special**

**ENGINE 3.0 LITRE  
MERCUISER  
PROP 13 3/4" x 21"**

| MPH             | RPM  | GPH | MPG |
|-----------------|------|-----|-----|
| 15              | 2300 | 2.8 | 5.6 |
| 25              | 3000 | 3.8 | 6.6 |
| 35              | 3800 | 7.8 | 4.5 |
| (Full Throttle) |      | —   | —   |
| 43-45           | 4600 | —   | —   |

0-20 M.P.H. Acceleration: 3.2 Seconds

**BOAT MODEL: X-19**

**ENGINE 3.7 LITRE  
MERCUISER  
PROP 13 1/2" x 23"**

| MPH             | RPM  | GPH  | MPG |
|-----------------|------|------|-----|
| 15              | 2200 | 3.5  | 4.3 |
| 25              | 2700 | 4.5  | 5.6 |
| 35              | 3400 | 7.4  | 4.7 |
| (Full Throttle) |      | —    | —   |
| 48-50           | 4400 | 12.8 | 3.8 |

0-20 M.P.H. Acceleration: 3.6 Seconds

**BOAT MODEL: X-19**

**ENGINE 3.0  
MERCUISER  
PROP 13" x 19"**

| MPH             | RPM  | GPH | MPG |
|-----------------|------|-----|-----|
| 15              | 2800 | 4.2 | 3.6 |
| 25              | 3300 | 4.9 | 5.1 |
| 35              | 3800 | 7.2 | 4.9 |
| (Full Throttle) |      | —   | —   |
| 43-45           | 4500 | —   | —   |

0-20 M.P.H. Acceleration: 3.4 Seconds

**BOAT MODEL: CX-19/SS-198**

**ENGINE 2.5 LITRE  
MERCUISER  
PROP 14" x 19"**

| MPH             | RPM  | GPH  | MPG |
|-----------------|------|------|-----|
| 15              | 2300 | 2.7  | 5.6 |
| 25              | 3000 | 3.6  | 6.9 |
| 35              | 4000 | 9.5  | 3.7 |
| (Full Throttle) |      | —    | —   |
| 38-40           | 4300 | 11.6 | 3.4 |

0-20 M.P.H. Acceleration: 5.3 Seconds

**BOAT MODEL: CX-19/SS-198**

**ENGINE 3.0 LITRE  
MERCURISER  
PROP 13 $\frac{3}{4}$ " x 21"**

| MPH   | RPM                     | GPH  | MPG |
|-------|-------------------------|------|-----|
| 15    | 2300                    | 2.6  | 5.8 |
| 25    | 3000                    | 3.6  | 6.9 |
| 35    | 4000                    | 8.8  | 4.0 |
| 42-44 | (Full Throttle)<br>4600 | 10.3 | 4.2 |

0-20 M.P.H. Acceleration: 4.5 Seconds

**BOAT MODEL: SSV-162**

**ENGINE 75 JOHNSON  
PROP 13 $\frac{3}{4}$ " x 17"**

| MPH   | RPM                     | GPH | MPG |
|-------|-------------------------|-----|-----|
| 15    | 3300                    | 2.7 | 5.6 |
| 25    | 3900                    | 3.1 | 8.1 |
| 35    | 5400                    | 7.7 | 4.5 |
| 37-39 | (Full Throttle)<br>5800 | 7.8 | 4.9 |

0-20 M.P.H. Acceleration: 3.5 Seconds

**BOAT MODEL: SSV-162**

**ENGINE 90 EVINRUDE  
PROP 13 $\frac{3}{4}$ " x 17"**

| MPH   | RPM                     | GPH | MPG |
|-------|-------------------------|-----|-----|
| 15    | 2500                    | 2.9 | 5.2 |
| 25    | 3400                    | 4.2 | 6.0 |
| 35    | 4600                    | 6.3 | 5.6 |
| 42-44 | (Full Throttle)<br>5400 | 8.2 | 5.2 |

0-20 M.P.H. Acceleration: 2.9 Seconds

**BOAT MODEL: SSV-172**

**ENGINE 115 EVINRUDE  
PROP 13" x 19"**

| MPH   | RPM                     | GPH | MPG |
|-------|-------------------------|-----|-----|
| 15    | 2800                    | 3.5 | 4.3 |
| 25    | 4000                    | 4.7 | 5.3 |
| 35    | 4800                    | 7.5 | 4.7 |
| 42-44 | (Full Throttle)<br>5000 | 8.4 | 4.5 |

0-20 M.P.H. Acceleration: 3.3 Seconds

**BOAT MODEL: SSV-175**

**ENGINE 2.5 LITRE  
MERCURISER  
PROP 14" x 19"**

| MPH   | RPM                     | GPH | MPG |
|-------|-------------------------|-----|-----|
| 15    | 2300                    | 2.5 | 6.0 |
| 25    | 2900                    | 4.0 | 6.3 |
| 35    | 3900                    | 8.7 | 4.0 |
| 39-42 | (Full Throttle)<br>4300 | —   | —   |

0-20 M.P.H. Acceleration: 3.6 Seconds

**BOAT MODEL: SSV-175**

**ENGINE 3.0 LITRE  
MERCURISER  
PROP 13 $\frac{3}{4}$ " x 21"**

| MPH   | RPM                     | GPH | MPG |
|-------|-------------------------|-----|-----|
| 15    | 2300                    | 2.7 | 5.6 |
| 25    | 3000                    | 3.6 | 6.9 |
| 35    | 3700                    | 7.6 | 4.6 |
| 44-47 | (Full Throttle)<br>4700 | —   | —   |

0-20 M.P.H. Acceleration: 3.2 Seconds



**BOAT MODEL: SSV-177 ENGINE 140 H.P. EVINRUDE  
14 1/4" x 21" S/S**

| MPH            | RPM  | GPH  | MPG |
|----------------|------|------|-----|
| 15             | 2500 | 3.1  | 4.6 |
| 25             | 3500 | 5.2  | 5.1 |
| 35             | 4200 | 6.5  | 4.7 |
| 45-47 (W.O.T.) | 5400 | 14.0 | 3.4 |

0-20 M.P.H. Acceleration: 4.0 Seconds

**BOAT MODEL: SSV-177 ENGINE 135 H.P. (V-6)  
MERCURY  
14-3/8" x 21" S/S LASER**

| MPH            | RPM  | GPH  | MPG |
|----------------|------|------|-----|
| 15             | 2400 | 4.2  | 4.2 |
| 25             | 3000 | 5.1  | 5.1 |
| 35             | 4000 | 7.1  | 5.1 |
| 49-51 (W.O.T.) | 5500 | 16.0 | 3.1 |

0-20 M.P.H. Acceleration: 3.8 Seconds

**BOAT MODEL: SSV-185/GX-185 ENGINE 5.0 LITRE  
MERCURISER  
PROP 13 3/4" x 21"**

| MPH   | RPM             | GPH | MPG |
|-------|-----------------|-----|-----|
| 15    | 1800            | 4.1 | 3.7 |
| 25    | 2800            | 4.7 | 5.3 |
| 35    | 3300            | 6.9 | 5.1 |
|       | (Full Throttle) |     |     |
| 45-48 | 4300            |     |     |

0-20 M.P.H. Acceleration: 3.6 Seconds

**BOAT MODEL: SSV-185/GX-185 ENGINE 5.7 LITRE  
MERCURISER  
PROP 13 1/2" x 23"**

| MPH   | RPM             | GPH | MPG |
|-------|-----------------|-----|-----|
| 15    | 1800            | 4.0 | 3.8 |
| 25    | 2300            | 4.5 | 5.6 |
| 35    | 3000            | 8.2 | 4.3 |
|       | (Full Throttle) |     |     |
| 55-58 | 4600            |     |     |

0-20 M.P.H. Acceleration: 2.9 Seconds

**BOAT MODEL: SSV-187 ENGINE 140 JOHNSON  
PROP 13" x 19"**

| MPH   | RPM             | GPH | MPG |
|-------|-----------------|-----|-----|
| 15    | 1800            | 3.1 | 4.8 |
| 25    | 2700            | 5.3 | 4.7 |
| 35    | 3900            | 7.7 | 4.5 |
|       | (Full Throttle) |     |     |
| 45-48 | 6000            |     |     |

0-20 M.P.H. Acceleration: 3.5 Seconds

**BOAT MODEL: SSV-187 ENGINE 150 EVINRUDE  
PROP 14 1/4" x 21"**

| MPH   | RPM             | GPH | MPG |
|-------|-----------------|-----|-----|
| 15    | 2300            | 5.7 | 2.6 |
| 25    | 3100            | 6.8 | 3.7 |
| 35    | 4000            | 9.2 | 3.8 |
|       | (Full Throttle) |     |     |
| 54-57 | 5500            |     |     |

0-20 M.P.H. Acceleration: 3.0 Seconds

BOAT MODEL: SSV-195/GX-195      ENGINE 3.0 LITRE  
MERCUISER  
PROP 13 $\frac{3}{4}$ " x 21"

| MPH             | RPM  | GPH | MPG |
|-----------------|------|-----|-----|
| 15              | 2300 | 2.8 | 5.6 |
| 25              | 3000 | 3.8 | 6.6 |
| 35              | 3800 | 7.8 | 4.5 |
| (Full Throttle) |      |     |     |
| 44-47           | 4600 | —   | —   |

0-20 M.P.H. Acceleration: 3.2 Seconds

BOAT MODEL: SSV-197      ENGINE 175  
JOHNSON  
PROP 14 $\frac{1}{4}$ " x 21"

| MPH             | RPM  | GPH | MPG |
|-----------------|------|-----|-----|
| 15              | 2200 | 5.8 | 2.6 |
| 25              | 3000 | 6.8 | 3.7 |
| 35              | 3900 | 9.3 | 3.8 |
| (Full Throttle) |      |     |     |
| 53-56           | 5800 | —   | —   |

0-20 M.P.H. Acceleration: 3.0 Seconds

BOAT MODEL: SSV-195/GX-195      ENGINE 3.7 LITRE  
MERCUISER  
PROP 13 $\frac{1}{2}$ " x 23"

| MPH             | RPM  | GPH | MPG |
|-----------------|------|-----|-----|
| 15              | 2300 | 3.6 | 4.3 |
| 25              | 2800 | 4.5 | 5.6 |
| 35              | 3500 | 7.4 | 4.7 |
| (Full Throttle) |      |     |     |
| 48-50           | 4400 | —   | —   |

0-20 M.P.H. Acceleration: 3.7 Seconds

BOAT MODEL: SSV-199/GX-199      ENGINE 5.0 LX  
LITRE MERCUISER  
PROP 14" x 19"

| MPH             | RPM  | GPH | MPG |
|-----------------|------|-----|-----|
| 15              | 1800 | 4.0 | 3.8 |
| 25              | 2500 | 4.8 | 5.2 |
| 35              | 2900 | 6.8 | 5.1 |
| (Full Throttle) |      |     |     |
| 50-53           | 4500 | —   | —   |

0-20 M.P.H. Acceleration: 3.0 Seconds

BOAT MODEL: SSV-199/GX-199      ENGINE 5.7 LITRE  
MERCUISER  
PROP 13 $\frac{1}{2}$ " x 23" S/S

| MPH   | RPM  | GPH  | MPG |
|-------|------|------|-----|
| 15    | 1850 | 4.6  | 3.2 |
| 25    | 2200 | 5.8  | 4.4 |
| 35    | 3000 | 9.8  | 3.8 |
| 56-59 | 4400 | 19.6 | 3.0 |

0-20 M.P.H. Acceleration: 3.3 Seconds

BOAT MODEL: SSV-199/GX-199      ENGINE 5.7 LITRE  
MERCUISER  
PROP 13 $\frac{3}{4}$ " x 21"

| MPH             | RPM  | GPH | MPG |
|-----------------|------|-----|-----|
| 15              | 1800 | 4.0 | 3.8 |
| 25              | 2100 | 4.4 | 5.7 |
| 35              | 3000 | 8.1 | 4.3 |
| (Full Throttle) |      |     |     |
| 54-57           | 4600 | —   | —   |

0-20 M.P.H. Acceleration: 2.9 Seconds



**BOAT MODEL: SSV-233****ENGINE 5.7 MERCURISER  
PROP 14½" x 17" S/S**

| MPH            | RPM  | GPH  | MPG |
|----------------|------|------|-----|
| 15             | 2400 | 6.6  | 2.8 |
| 25             | 3000 | 9.2  | 2.8 |
| 35             | 4000 | 18.8 | 1.9 |
| 42-46 (W.O.T.) | 4600 | 22.8 | 1.9 |

0-20 M.P.H. Acceleration: 4.3 Seconds

**BOAT MODEL: SSV-233****ENGINE 7.4 LITRE  
(ALPHA ONE)  
14½" x 17" S/S**

| MPH            | RPM  | GPH  | MPG |
|----------------|------|------|-----|
| 25             | 2500 | 9.6  | 2.7 |
| 35             | 3400 | 19.2 | 2.0 |
| 50-52 (W.O.T.) | 4800 | 37.5 | 1.3 |

0-20 M.P.H. Acceleration: 3.7 Seconds

**BOAT MODEL: SSV-233****ENGINE 7.4 LITRE  
BRAVO MERCURISER  
PROP 15¼" x 19" MIRAGE**

| MPH   | RPM  | GPH  | MPG |
|-------|------|------|-----|
| 15    | 2200 | 7.2  | 2.3 |
| 25    | 2500 | 8.9  | 2.9 |
| 35    | 3400 | 13.8 | 2.7 |
| 49-51 | 4600 | 24.2 | 1.9 |

0-20 M.P.H. Acceleration: 3.7 Seconds

**BOAT MODEL: GX-199****ENGINE 7.4 LITRE  
MERCURISER (BRAVO 1) MIRAGE  
14-5/8" x 23"**

| MPH            | RPM  | GPH  | MPG |
|----------------|------|------|-----|
| 25             | 2500 | 7.6  | 3.2 |
| 35             | 3500 | 13.6 | 2.7 |
| 60-64 (W.O.T.) | 4600 | 34.0 | 1.7 |

0-20 M.P.H. Acceleration: 3.0 Seconds

**BOAT MODEL: CVX-16****ENGINE 90 MERCURY  
PROP 12¾" x 21"**

| MPH   | RPM             | GPH | MPG |
|-------|-----------------|-----|-----|
| 15    | 2400            | 3.5 | 4.3 |
| 25    | 3800            | 4.5 | 5.6 |
| 35    | 4500            | 7.1 | 4.9 |
|       | (Full Throttle) |     |     |
| 41-43 | 5000            | 8.2 | 5.1 |

0-20 M.P.H. Acceleration: 3.2 Seconds

**BOAT MODEL: CVX-16****ENGINE 115 EVINRUDE  
PROP 12¾" x 21"**

| MPH   | RPM             | GPH | MPG |
|-------|-----------------|-----|-----|
| 15    | 2400            | 3.4 | 4.4 |
| 25    | 3200            | 4.5 | 5.6 |
| 35    | 4400            | 7.0 | 5.0 |
|       | (Full Throttle) |     |     |
| 47-49 | 5000            | 8.4 | 5.7 |

0-20 M.P.H. Acceleration: 3.0 Seconds

**BOAT MODEL: CVX-18**

| MPH                                   | RPM  | GPH | MPG |
|---------------------------------------|------|-----|-----|
| 15                                    | 1800 | 4.1 | 3.7 |
| 25                                    | 2400 | 4.8 | 5.2 |
| 35                                    | 2800 | 6.8 | 5.1 |
| (Full Throttle)                       |      |     |     |
| 52-56                                 | 4500 |     |     |
| 0-20 M.P.H. Acceleration: 3.4 Seconds |      |     |     |

**ENGINE 5.0 LX LITRE  
MERCUISER  
PROP 13<sup>3</sup>/<sub>4</sub>" x 21"**
**BOAT MODEL: CVX-20**

| MPH                                   | RPM  | GPH  | MPG |
|---------------------------------------|------|------|-----|
| 15                                    | 1900 | 5.8  | 2.6 |
| 25                                    | 2700 | 6.9  | 3.6 |
| 35                                    | 3500 | 10.0 | 3.5 |
| (Full Throttle)                       |      |      |     |
| 57-60                                 | 5600 | 18.6 | 3.2 |
| 0-20 M.P.H. Acceleration: 3.0 Seconds |      |      |     |

**ENGINE 200 JOHNSON  
PROP 14" x 23"**
**BOAT MODEL: CVX-18**

| MPH                                   | RPM  | GPH | MPG |
|---------------------------------------|------|-----|-----|
| 15                                    | 1800 | 4.1 | 3.7 |
| 25                                    | 2400 | 4.6 | 5.4 |
| 35                                    | 3000 | 8.2 | 4.3 |
| (Full Throttle)                       |      |     |     |
| 59-63                                 | 4600 |     |     |
| 0-20 M.P.H. Acceleration: 2.9 Seconds |      |     |     |

**ENGINE 5.7 LITRE  
MERCUISER  
PROP 13<sup>1</sup>/<sub>2</sub>" x 23"**
**BOAT MODEL: CVX-23**

| MPH                                   | RPM  | GPH  | MPG |
|---------------------------------------|------|------|-----|
| 15                                    | 2000 | 4.3  | 3.5 |
| 25                                    | 2600 | 4.9  | 5.1 |
| 35                                    | 3300 | 8.3  | 4.2 |
| (Full Throttle)                       |      |      |     |
| 53-56                                 | 4600 | 21.7 | 2.5 |
| 0-20 M.P.H. Acceleration: 3.6 Seconds |      |      |     |
| <i>*Stainless Steel</i>               |      |      |     |

**ENGINE 5.7 LITRE  
MERCUISER  
PROP 13<sup>3</sup>/<sub>4</sub>" x 21"**
**BOAT MODEL: CVX-20**

| MPH                                   | RPM  | GPH  | MPG |
|---------------------------------------|------|------|-----|
| 15                                    | 2600 | 5.6  | 2.7 |
| 25                                    | 3100 | 6.6  | 3.8 |
| 35                                    | 4100 | 9.3  | 3.8 |
| (Full Throttle)                       |      |      |     |
| 55-57                                 | 5200 | 17.8 | 3.1 |
| 0-20 M.P.H. Acceleration: 3.1 Seconds |      |      |     |

**ENGINE 175 JOHNSON  
PROP 14<sup>1</sup>/<sub>4</sub>" x 21"**
**BOAT MODEL: CVX-23**

| MPH                                   | RPM  | GPH  | MPG |
|---------------------------------------|------|------|-----|
| 15                                    | 2000 | 4.3  | 3.5 |
| 25                                    | 2600 | 5.0  | 5.0 |
| 35                                    | 3400 | 8.5  | 4.1 |
| (Full Throttle)                       |      |      |     |
| 52-55                                 | 4400 | 22.0 | 2.5 |
| 0-20 M.P.H. Acceleration: 3.7 Seconds |      |      |     |
| <i>*Stainless Steel</i>               |      |      |     |

**ENGINE 5.7 LX  
COBRA O.M.C.  
Selectrim PROP 14<sup>1</sup>/<sub>4</sub>" x 19"**



**BOAT MODEL: CVX-23**      **ENGINE 350 MERCUISER  
MAGNUM**  
PROP 13 $\frac{3}{4}$ " x 21" S/S

| MPH            | RPM  | GPH  | MPG |
|----------------|------|------|-----|
| 25             | 2500 | 5.9  | 4.2 |
| 30             | 3000 | 8.5  | 3.7 |
| 40             | 3500 | 12.5 | 3.3 |
| 55-58 (W.O.T.) | 4600 | 25.0 | 2.3 |

0-20 M.P.H. Acceleration: 3.4 Seconds

**BOAT MODEL: SS-212**      **ENGINE 200 JOHNSON**  
PROP 14 $\frac{1}{2}$ " x 19"

| MPH             | RPM  | GPH  | MPG |
|-----------------|------|------|-----|
| 15              | 2900 | 3.1  | 4.8 |
| 25              | 3500 | 9.2  | 2.7 |
| 35              | 4600 | 15.3 | 2.3 |
| (Full Throttle) |      |      |     |
| 40-43           | 5500 | 24.6 | 1.7 |

0-20 M.P.H. Acceleration: 4.1 Seconds

**BOAT MODEL: SS-198**      **ENGINE 5.7 LITRE  
MERCUISER**  
13 $\frac{1}{2}$ " x 23" S/S

| MPH            | RPM  | GPH  | MPG |
|----------------|------|------|-----|
| 25             | 2400 | 8.6  | 3.2 |
| 35             | 3000 | 15.0 | 2.3 |
| 54-56 (W.O.T.) | 4550 | 25.0 | 2.3 |

0-20 M.P.H. Acceleration: 3.4 Seconds

**BOAT MODEL: SS-212**      **ENGINE 150 EVINRUDE**  
PROP 15 $\frac{1}{2}$ " x 15"

| MPH             | RPM  | GPH  | MPG |
|-----------------|------|------|-----|
| 15              | 3200 | 7.6  | 2.0 |
| 25              | 4000 | 9.6  | 2.6 |
| (Full Throttle) |      |      |     |
| 30-33           | 5200 | 14.0 | 2.4 |

0-20 M.P.H. Acceleration: 4.8 Seconds

**Glastron, Inc.**  
3150 IH 35 West New Braunfels, Texas 78130

**A GENMAR® COMPANY**