

NEW DIMENSIONS IN BOATING



**Glastron**<sup>®</sup>  
SALESMAN'S HANDBOOK

1986

Due to continuing improvements and changes in product features and options, Glastron-Conroy, Ltd. does not guarantee the availability of all product features and options as displayed in this book, and reserves the right to change specifications without notice.

THIS BOOK IS FOR GLASTRON SALESMAN'S REFERENCE ONLY AND IS NOT TO BE GIVEN OUT OR REPRODUCED.

**BOAT  
LIMITED WARRANTY**

Company warrants each new boat manufactured by Company, to the original purchaser only, to be free from defects in material and workmanship under normal use or service for a period of one year from date of retail purchase from an authorized dealer.

Any part of the boat manufactured by Company and found in the judgment of Company to be defective in material or workmanship will be repaired or replaced by an authorized dealer during said warranty period. Warranty repairs or replacement do not extend the original one year warranty.

All warranty work must be approved in advance by an authorized dealer. The expense of transporting the boat to and from the dealer as well as any derigging or riggering required in order to effect repairs will be paid for by the owner. Proof of purchase may be required.

**DISCLAIMER**

**THIS WARRANTY DOES NOT COVER  
THE FOLLOWING:**

UPHOLSTERY, CARPET, CANVAS, WINDSHIELD BREAKAGE, OR THE CRACKING, CRAZING, OR BLISTERING OF GELCOAT;

ANY BOAT OPERATED FOR RACING OR COMMERCIAL PURPOSES OR IN ANY WAY CONTRARY TO THE OPERATING OR MAINTENANCE INSTRUCTIONS AS SPECIFIED IN THE OWNER'S MANUAL.

THIS WARRANTY ALSO DOES NOT APPLY TO EQUIPMENT AND ACCESSORIES NOT MANUFACTURED BY COMPANY.

IN ADDITION, THIS WARRANTY DOES NOT EXTEND TO REPAIRS MADE NECESSARY BY NORMAL WEAR OR BY USE OF PARTS, ACCESSORIES OR MODIFICATIONS WHICH IN THE JUDGMENT OF COMPANY ARE EITHER INCOMPATIBLE WITH THE BOAT OR ADVERSELY AFFECT ITS OPERATION. NOR DOES THIS WARRANTY COVER ANY COMPANY BOAT WHICH HAS BEEN POWERED OR LOADED IN EXCESS OF LIMITS SPECIFIED ON THE CAPACITY PLATE ON EACH BOAT.

ALL WARRANTIES INCLUDING THE IMPLIED WARRANTIES OF MERCHANTABILITY, FITNESS FOR A PARTICULAR PURPOSE, OR OTHERWISE, ARE DISCLAIMED IN THEIR ENTIRETY. COMPANY'S OBLIGATIONS HEREUNDER ARE LIMITED TO THE REPAIR OR REPLACEMENT OF DEFECTIVE PARTS, AS AFORESAID, AND COMPANY DOES NOT ASSUME OR AUTHORIZE ANYONE TO ASSUME FOR THEM ANY OTHER OBLIGATION, CONSEQUENTIAL OR OTHERWISE.

This warranty applies only to boats sold in the United States and Canada.

**TRAILER  
LIMITED WARRANTY**

Company warrants each new trailer manufactured by Company, to the original purchaser only, to be free from defects in material and workmanship under normal use or service for one year from date of retail purchase from an authorized dealer.

Any part of the trailer manufactured by Company and found in the judgment of Company to be defective in material or workmanship will be repaired or replaced, by an authorized dealer. Warranty repairs or replacement do not extend the original one year warranty.

All warranty work must be approved in advance by an authorized dealer. The expense of transporting the trailer to and from the dealer will be paid for by the owner. Proof of purchase may be required.

**DISCLAIMER**

THIS WARRANTY DOES NOT COVER ANY TRAILER THAT HAS BEEN SUBJECT TO MISUSE, NEGLIGENCE, ACCIDENT OR OPERATED IN ANY WAY CONTRARY TO THE OPERATING OR MAINTENANCE INSTRUCTIONS AS SPECIFIED IN THE OWNER'S-OPERATOR'S MANUAL. THE WARRANTY DOES NOT COVER ANY TRAILER THAT HAS BEEN ALTERED OR MODIFIED SO AS TO ADVERSELY AFFECT THE TRAILER'S OPERATION, PERFORMANCE, OR DURABILITY, OR THAT HAS BEEN ALTERED OR MODIFIED SO AS TO CHANGE THE INTENDED USE OF THE TRAILER. IN ADDITION, THE WARRANTY DOES NOT EXTEND TO REPAIRS MADE NECESSARY BY NORMAL WEAR, OR BY THE USE OF PARTS OR ACCESSORIES WHICH IN THE JUDGMENT OF COMPANY ARE EITHER INCOMPATIBLE WITH THE TRAILER OR ADVERSELY AFFECT ITS OPERATION, PERFORMANCE OR DURABILITY.

THIS WARRANTY DOES NOT COVER (1) ANY BOATS TRANSPORTED OR STORED ON TRAILER; (2) OTHER EQUIPMENT OR ACCESSORIES CARRYING THEIR OWN INDIVIDUAL WARRANTIES; (3) MACHINERY, EQUIPMENT AND ACCESSORIES NOT FACTORY INSTALLED; (4) TRAILERS USED FOR COMMERCIAL PURPOSES; (5) ROAD GRAVEL DAMAGE TO PAINT; (6) FADING OF CARPET OR PAINT DUE TO NORMAL WEAR OR WEATHERING; (7) ANY TRAILER WHICH HAS BEEN OVERLOADED IN EXCESS OF THE CAPACITY STATED ON THE IDENTIFICATION PLATE AND IN THE OWNER'S-OPERATOR'S MANUAL; (8) OXIDATION OR CORROSION FROM USE IN SALTY OR BRINY WATERS, OR FROM EXTENDED USE IN OTHER WATERS; (9) LOSS OF TIRE/WHEEL ASSEMBLIES DUE TO INADEQUATE TORQUE MAINTENANCE OF WHEEL LUGS.

ALL WARRANTIES INCLUDING THE IMPLIED WARRANTIES OF MERCHANTABILITY, FITNESS FOR A PARTICULAR PURPOSE, OR OTHERWISE, ARE DISCLAIMED IN THEIR ENTIRETY. COMPANY'S OBLIGATIONS HEREUNDER ARE LIMITED TO THE REPAIR OR REPLACEMENT OF DEFECTIVE PARTS, AS AFORESAID, AND COMPANY DOES NOT ASSUME OR AUTHORIZE ANYONE TO ASSUME FOR THEM ANY OTHER OBLIGATION, CONSEQUENTIAL OR OTHERWISE.

This warranty applies only to trailers sold in the United States and Canada.



### **GLASTRON, GLASTRON/CONROY AND GLASTRON/CARLSON BOAT LINES**

Glastron-Conroy, Ltd. has not chosen the easiest or cheapest approach to boat construction, but it is the one which created satisfied customers year after year.

This handbook will provide you, the dealer, with information pertinent to each boat in the Glastron, Glastron/Conroy and Glastron/Carlson model lines. Its size is such that it can be carried with you on the showroom floor and referred to should specific questions come up pertaining to specifications, features or safety standards.

While each boat may be constructed in a different manner to suit its design, use and capability, there are many items which remain standard throughout all three lines.

#### **HAND LAY-UP CONSTRUCTION**

Hand lay-up construction is the method of manufacture in all of the boat lines. In the hand lay-up method, the basic raw materials, fiberglass mat, fiberglass roving and resin are used in the basic lay-up of hulls and decks. In strength and construction the hand lay-up method can be compared with plywood lamination. Plywood obtains its strength and resilience through its continuous layers, one bonded to the other. The same principle applies to the hand lay-up method of building a fiberglass boat.

Each boat receives a different hull lay-up, depending upon its size and horsepower requirements.

In each model, the keel areas of fiberglass are overlapped, thereby providing a double thickness in these areas of impact.

#### **STRINGER SYSTEM**

Each boat contains a rigid stringer system to support the hull and maintain its uniform shape. These stringers are encapsulated in fiberglass and bonded to the hull to assure a rigid single structure. The floor is then fastened in place to the stringer system.

### **FUEL SYSTEMS**

All fuel systems comply with current U.S. Coast Guard and Boating Industry Association specifications. All fuel tanks are pressure checked when the fuel lines are attached, to assure that there are no leaks around the fittings. In addition, each installed fuel tank includes anti-siphon protection to reduce the possibility of fuel spillage.

### **SEAT AND SEAT VINYL**

Glastron-Conroy, Ltd. manufactures almost all of their own seats. Wood used in seats, as well as all exposed wood in the boat, is dipped in wood preservative in order to provide maximum protection against the possibility of delamination and rot. All plywood is bonded with waterproof exterior grade glue. Joints are glued and T-nuts are used extensively. Vinyls used in seats and other areas of the boats are the highest standard 32 oz. marine grade vinyls and have been checked in Glastron's weatherometer to determine their durability under ultraviolet light and weathering. Many models utilize a back-to-back sleeper seat which may be extended for the convenience of the owner.

### **GELCOATS**

Gelcoats used in all lines are one of the added features in creating long lasting value. A gelcoat formula was developed jointly by Glastron-Conroy, Ltd. and its resin and pigment suppliers. This gelcoat is applied at an average thickness of 20 ml.-22 ml. (wet), 16 ml.-18 ml. (dry) to create a bright, durable finish. Tests in the weatherometer indicate that the finish resists fading, chalking, crazing, and blistering.

### **APPROXIMATE SPEED**

Approximate speed ranges are based on actual speed tests measured by radar. Boats are tested with various props and under varying weight/load conditions to determine the recommended prop for optimum performance. Keep in mind that optimum performance provides the best performance through all r.p.m. ranges and does not necessarily provide the highest peak speed performance.

### FOAM FLOTATION

All boats manufactured by Glastron, Glastron/Conroy and Glastron/Carlson comply with the U.S. Coast Guard regulations and B.I.A. standards for flotation. All O/B's under 20 feet have level flotation. All other models have basic flotation.

### B.I.A. CERTIFICATION

All boats manufactured by Glastron, Glastron/Conroy and Glastron/Carlson are certified by the Boating Industry Association as having met current established standards in the areas of fuel and electrical systems, compartment ventilation, steering, lighting, load capacities, flotation and horsepower limitations (O/B only). All lines are manufactured in compliance with U.S. Coast Guard Federal Regulations.

Many questions have arisen concerning B.I.A. certification of horsepower for outboards. The U.S. Coast Guard and many states now use this certification as a standard for horsepower limitation on all manufacturer's boats. This horsepower certification is derived in the following manner. NOTE: Different methods may be used for smaller boats having no remote steering or different hull forms.

- (1) Multiply the length of the boat in feet and tenths of feet times the maximum transom width in feet and tenths of feet.
- (2) Round off the previous answer down to the nearest whole number and multiply by two.
- (3) Subtract 90.
- (4) If the number is not a multiple of five, raise it to the next multiple of five.

This will provide you with the maximum B.I.A. certified and U.S.C.G. horsepower rating which can be established for a specific model of boat.

Glastron-Conroy, Ltd. does not recommend over-powering. To do so will result in voiding the warranty.

### ENGINE WEIGHT CHART

All sterndrives have been shown without engine weight. To arrive at the total boat weight with engine installed, refer to boat weight on individual model specifications page and add applicable engine weight as found in engine specification section.

Keep in mind when deriving trailer capacity that this weight does not take into consideration additional weight loads for fuel, gear, anchors, battery, etc., which the trailer will have to support.

### PROP RECOMMENDATIONS

Glastron-Conroy, Ltd. has recommended the prop which, in our opinion, provides the best all-around performance for the sterndrive engine-boat combination. Please keep in mind that altitude, load conditions, temperature, humidity, tuning, etc., can all affect a given boat's performance. Therefore, performance may vary dependent upon condition.



## DEFINITIONS OF BOAT MEASUREMENTS

**Length Overall (LOA)** — Distance along the centerline from the tip of the bow to the aft-most part of the hull.

**Maximum Beam** — Maximum width of the boat.

**Transom Width** — Maximum width of the boat at transom.

**Depth** — Vertical distance from lowest point of the keel to highest point of the boat, excluding windshields, lights and other removable components.

**Transom** — Vertical distance at boat's centerline from the keel/transom intersection to the transom top.

**Maximum Depth** — Vertical distance from lowest point of the keel to the highest point of boat, including windshields.

**Storage Capacity** — Total number of cubic feet of available storage space.

**Cockpit Depth** — Vertical distance from boat floor to top of gunwale as measured at the driver seat.

**Length Overall on Trailer** — Distance measured along the boat centerline, from forward-most point of trailer to aft-most point of motor/outdrive.

**Boat Height on Trailer** — Vertical Distance from ground to highest point of boat, including windshield.

**Draft (Drive unit up)** — Total number of inches of boat and/or motor and drive unit below the waterline. Measured unloaded, with the motor/drive-unit in the full up position.

**Draft (Drive unit down)** — Total number of inches of boat and/or motor and drive unit below the waterline. Measured unloaded, with the motor/drive-unit in the full down position.

## GLASTRON CUSTOM TRAILERS

ALL GLASTRON CUSTOM TRAILERS comply with FEDERAL DEPARTMENT OF TRANSPORTATION, the SOCIETY OF AUTOMOTIVE ENGINEERS, and the TRAILER MANUFACTURERS ASSOCIATION safety standards. These cover areas such as lighting, de-rating of automotive tires for trailer use, proper gross and axle weight values, brake systems, and Universal Vehicle Identification Code.

THE GLASTRON CUSTOM TRAILERS share many features for easy, trouble free trailering, launching and loading. These include:

- Low profile, wide track design for stable towing as well as easy launching and loading.
- Soft riding automotive tires.
- Slotted steel wheels painted to match the trailer.
- Color coordination with each Glastron boat.
- BEARING BUDDY axle with waterproof hubs and bearing system.
- Custom fitted bunks, engineered for maximum hull support. The bunk placement also insures easy and sure centering of the boat onto the trailer, making guide-on devices such as side boards or rollers unnecessary.
- Full enclosed fenders with carpet decks fore and aft.\*
- Triangulated bowstop with center mounted casterjack.
- Custom roll formed rails rather than structural steel or tubing. This gives the GLASTRON TRAILER the smooth, clean appearance that structural steel cannot, and without the water trapping properties of tubing.
- The rails are cold formed in a sweeping curve, not pieced and welded together.
- MIG welding is used with only cosmetic, superficial grinding when necessary. In all about 90% of all welds are hidden, or are not apparent when the boat is on the trailer.
- Fenders and deck are bolted on the frame, again to eliminate visible welds, as well as increase service ability.\*

- In addition to a baked-on polyester paint, the steel trailer receives a baked-on layer of a newly developed high solid, zinc rich primer, applied after a lengthy session in the cleaning and etching tanks.
- A hot dipped galvanized finish is available on all models for use in salty or coastal waters.

For specifications, see page 12.  
 \*NOT AVAILABLE ON TZ-16 TRAILER

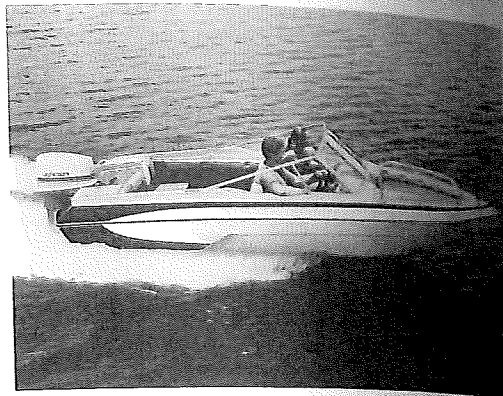
### TRAILER SPECIFICATIONS

MODEL	GLASTON	GLASTON CONROY	GLASTON CARLSON	LOA	MOA	RAIL	CAPACITY	WEIGHT	TIRES	AXLE	BRMS
TZ-16		Z-16		16'8"	78"	11 GA x 4 1/2"	1320	100	A78-13 WW	Single	Optional
SG-16	HPV-165	Z-16		17'5"	91"	11 GA x 4 1/2"	1560	520	B78-13 WW	Single	Optional
SG-16c*		X-16		17'5"	91"	11 GA x 4 1/2"	1720	520	C78-14 WW	Single	Optional
SC-16		Z-17 X-17	CVX-16	17'5"	91"	11 GA x 4 1/2"	1580	520	B78-13 WW	Single	Optional
SG-17	V-178		CVX-17	18'6"	96"	7 GA x 4-5/8"	2100	640	F78-14 WW	Single	Optional
SC-17				17'11"	91"	11 GA x 4 1/2"	1720	520	C78-14 WW	Single	Optional
SH-17	HPV-175			18'6"	96"	7 GA x 4-5/8"	2100	640	F78-14 WW	Single	Optional
SC-18			CVX-18	18'6"	96"	7 GA x 4-5/8"	2560	650	H78-14 WW	Single	Optional
SG-19	SSV-187/189	X-19/CX-19		20'5"	96"	7 GA x 4-5/8"	2560	650	H78-14 WW	Single	Optional
SGT-19	SSV-187/189	X-19/CX-19		20'5"	96"	7 GA x 4-5/8"	3000	830	F78-14 WW	Tandem	Optional
S-19	SSV-187/198/199			20'5"	96"	7 GA x 4-5/8"	3080	650	G78-14c WW	Single	Optional
ST-19	SSV-197/198/199			20'5"	96"	7 GA x 4-5/8"	3100	830	F78-14 WW	Tandem	Optional
SS-19	SV-191			20'5"	96"	7 GA x 4-5/8"	3080	650	G78-14c WW	Single	Optional
SST-19	SV-191			20'5"	96"	7 GA x 4-5/8"	3100	830	F78-14 WW	Tandem	Optional
SC-20 I/O			Inimulador	20'5"	96"	7 GA x 4-5/8"	2560	650	H78-14 WW	Single	Optional
SCT-20 I/O			Inimulador	20'5"	96"	7 GA x 4-5/8"	3100	830	F78-14 WW	Tandem	Optional
SC-20 OB			Sprint	20'5"	96"	7 GA x 4-5/8"	2560	650	H78-14 WW	Single	Optional
SCT-20 OB			Sprint	20'5"	96"	7 GA x 4-5/8"	3100	830	F78-14 WW	Tandem	Optional
SGT-21	V-216			22'6"	96"	7 GA x 5 1/4"	4100	1300	F78-14 WW	Tandem	Standard
SCT-23			CV-23	23'	96"	7 GA x 4-5/8"	4000	1150	F78-14 WW	Tandem	Standard
SGT-23	V-233			25'	96"	7 GA x 5 1/4"	4700	1300	H78-14 WW	Tandem	Standard

\*With C78-14 Tire Option



# Z-16



## SPECIFICATIONS

LOA 16'2 1/4" 4.9M	Approximate Weight 750 lbs. 341 kg
Beam 79 1/4" 2.0 M	Ice Box Capacity 1.0 c.f. 30 qt. 28 l.
Depth 38 3/4" 1.0M	Transom Width 77 1/4" 1.9M
Maximum Depth 51" 1.2M	Motor Shaft Length 20"
Stor. Cap. 13.0 c.f. .4 cu.m.	Cockpit Depth 25 1/4" .7M
LOA on Trailer 19'0" 5.8M	Boat Ht. on Trailer 72" 1.8M
Trailer TZ-16 SG-16 (See Page 12)	Fuel Cap: 12 gal (STD)
Max. Load 1290 lbs. 585 kg.	18 gal (DLX)
Max. Pers. 7 or 1050 lbs. 476 kg.	Steering Mechanical
Draft: A. Drive Unit Up 11 1/2" .3M	
B. Drive Unit Down 29 1/4" .7M	

## STANDARD COLORS

Cream w/Blue Striping

## DELUXE COLORS

Blue/White  
Blue/Gray  
Blue/Blue  
Red/White  
Red/Gray

# Z-16

## STANDARD FEATURES

- Hand laid fiberglass construction
- Built in aluminum fuel tank - 12 gallon
- Color coordinated upholstery
- Four (4) chrome tie-down cleats
- Plush carpet
- Insulated ice chest: under forward bow cushion, and jump seats.
- Storage under bow seats
- Meets and exceeds Coast Guard flotation requirements
- B.I.A. certified
- Six (6) drink holders
- Anodized aluminum bow rails
- Anodized aluminum stern boarding ladder
- In-floor ski locker
- Side tray storage
- Soft top
- Walk-thru tempered glass windshield
- Two (2) fold out lounge seats
- Two (2) aft jumpseats
- Concealed electric horn
- Stainless steel bow eye and ski eye
- Running lights with removable stem light
- Open bow with cushioned seating
- Padded dash tops
- Accent striping
- Padded sport wheel

## DELUXE FEATURES

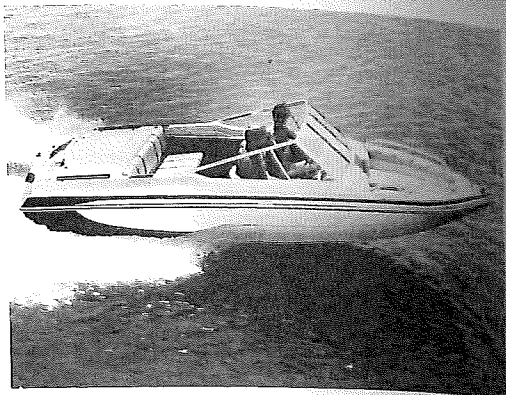
*Includes all Standard Features with the following changes and additions:*

- 18 gallon fuel tank
- In-floor ski locker with teak lid
- Padded dash tops with walk-thru panels
- Instrument panel with: speedometer, tachometer and fuel gauge

### OPTIONS

- Tonneau bow cover
- Side and stern curtains
- Custom mooring cover
- Soft top boot cover
- Walk-thru curtain

# X-16



## SPECIFICATIONS

LOA 16'4" 4.9M	Approximate Weight 800 lbs. 363 kg
Beam 79 1/4" 2.0M	Ice Box Capacity 1.0 c.f. 30 qt. 28 l
Depth 38 3/4" 1.0M	Transom Width 77 1/4" 1.9M
Maximum Depth 51" 1.2M	Max. Horsepower N/A
Stor. Capacity 18.1 c.f. .5 cu.m.	Motor Shaft Length N/A
LOA on Trailer 19'0" 5.8M	Cockpit Depth 25 1/4" 7M
Steering Mechanical	Boat Ht. on Trailer 72" 1.8M
Max. Load 1290 lbs. 585 kg.	Fuel Capacity 18 gal
Max. Per. 7 or 900 lbs. 409 kg.	Trailer SG-16c (See Page 12)

## STANDARD COLORS

Cream w/Blue Striping

## DELUXE COLORS

Blue/White  
Blue/Gray  
Blue/Blue  
Red/White  
Red/Gray

# X-16

## STANDARD FEATURES

- Hand laid fiberglass construction
- Color coordinated upholstery
- Four (4) chrome tie-down cleats
- Built-in aluminum fuel tank
- Plush carpet
- Meets and exceeds Coast Guard flotation requirements
- Insulated ice chest under forward bow cushion
- Storage under bow seats, bench seats, and aft deck port and starboard compartments
- In-floor ski locker
- Soft top
- Anodized aluminum bow rails
- Walk-thru tempered glass windshield
- Two (2) bucket seats
- Concealed electric horn
- Stainless steel bow eye and ski eye
- Running lights with removable stern light
- Anodized aluminum stern boarding ladder
- Lockable glove box
- B.I.A. certified
- Seven (7) drink holders
- Open bow with cushioned seating

- In-handle trim control (except 125 Volvo)
- Bilge pump and blower
- Command console with: speedometer, tachometer, electric fuel gauge, voltmeter, oil pressure gauge, engine temperature gauge plus switches for bilge pump, blower, horn and lights

- Padded dash tops
- Accent striping
- Padded sport wheel

## DELUXE FEATURES

*Includes all Standard Features with the following changes and additions:*

- In-floor ski locker with teak lid
- Padded dash tops with padded walk-thru panels
- Teak accents

## OPTIONS

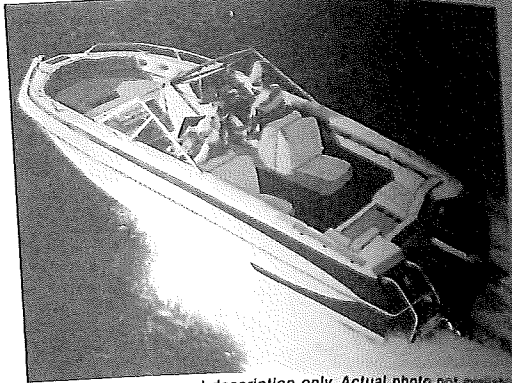
- Tonneau bow cover
- Side and stern curtains
- Custom mooring cover
- Soft top boot cover
- Walk-thru curtain

## ENGINE OPTIONS

- 120 Mercruiser
- 140 Mercruiser
- 120 O.M.C.
- 140 O.M.C.
- 125 Volvo



# Z-17



*This photo for general description only. Actual photo not available.*

## SPECIFICATIONS

LOA 17'¼" 5.0M	Approximate Weight 955 lbs. 430 kg.
Beam 83" 2.1 M	Ice Box Capacity 8 c.f. 25 qt. 24 l
Depth 46¾" 1.2M	Transom Width 79" 2.0M
Maximum Depth 59" 1.5M	Maximum Horsepower 140
Stor. Capacity 17.2 c.f. .5 cu.m.	Motor Shaft Length 20"
LOA on Trailer 21'09" 6.6M	Cockpit Depth 30" 8M
Steering Mechanical	Boat Ht. on Trailer 73" 1.9M
Max. Pers. 7 or 1050 lbs. 476 kg.	Fuel Capacity 25 gal.
Max. Load 1550 lbs. 703 kg.	Trailer SG-17 (See Page 12)
Draft: A. Drive Unit Up 10½" .3M	
B. Drive Unit Down 28" .71M	

## STANDARD COLORS

Cream w/Blue Striping

## DELUXE COLORS

Blue/White  
Blue/Gray  
Blue/Blue  
Red/White  
Red/Gray

# Z-17

## STANDARD FEATURES

- Hand laid fiberglass construction
- Built-in fuel tank with electric gauge
- Color coordinated upholstery
- Four (4) chrome tie-down cleats
- Push carpet
- 24 qt. Igloo ice chest
- Storage under bow seats and jump seats
- Meets and exceeds Coast Guard flotation requirements
- B.I.A. certified
- Six (6) drink holders
- Anodized aluminum bow rails
- Anodized aluminum stern boarding ladder
- In-floor ski locker
- Soft top
- Walk thru tempered glass windshield
- Two (2) fold out lounge seats
- Two (2) aft jumpseats
- Concealed electric horn
- Stainless steel bow eye and ski eye
- Running lights with removable stern light
- Open bow with cushioned seating

## DELUXE FEATURES

*Includes all Standard Features with the following changes and additions:*

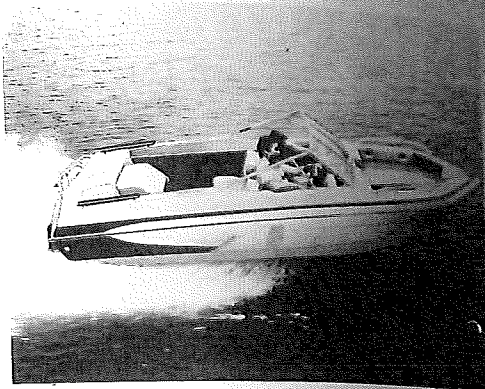
- In-floor ski locker with teak lid
- Padded dash tops with padded walk-thru panels
- Instrument panel with: speedometer, tachometer and fuel gauge
- Bilge pump
- Teak accents

## OPTIONS

- Tonneau bow cover
- Side and aft curtains
- Custom mooring cover
- Soft top boot cover



# X-17



## SPECIFICATIONS

LOA 17'1" 5.2M      Approximate Weight 950 lbs. 431 kg  
 Beam 83" 2.1M      Ice Box Capacity .6 c.f. 24 qt. 2.2 l.  
 Depth 46 3/4" 1.2M      Trailer SG-17 (See Page 12)  
 Maximum Depth 60 1/2" 1.6M      Max. Horsepower 100  
 Stor. Capacity 12.9 c.f. .37 cu.m.      Motor Shaft Length 1 1/2"  
 LOA on Trailer 20'2 3/4" 6.2M      Cockpit Depth 29 1/2" 76  
 Steering Mechanical      Boat Ht. on Trailer 77 1/2" 1.96  
 Max. Load 1050 lbs. 476 kg.      Fuel Capacity 25 gal.  
 Max. Pers. 7 or 1050 lbs. 476 kg.      Transom Width 7 1/2" 204  
 Draft: A. Drive Unit Up 14" 4M  
       B. Drive Unit Down 31 1/2" 8M

## STANDARD COLORS

Cream w/Blue Striping

## DELUXE COLORS

Blue/White  
 Blue/Gray  
 Blue/Blue  
 Red/White  
 Red/Gray

# X-17

## STANDARD FEATURES

Built in aluminum fuel tank  
 Open bow with cushioned seating  
 In-handle trim control (MerCruiser and 140/170 OMC)  
 Anodized aluminum bow rails  
 Anodized aluminum stern boarding ladder with non-skid swim step  
 Walk-thru tempered glass windshield  
 Meets and exceeds Coast Guard flotation requirements  
 Color coordinated upholstery  
 Running lights with removable stern light  
 Insulated ice chest  
 Command console with speedometer, tachometer, electric fuel gauge, voltmeter, oil pressure gauge, engine temperature gauge plus switches for bilge pump, blower, horn and lights  
 Storage under bow seats, jump seats, and sun lounge  
 Hand laid fiberglass construction  
 Four (4) chrome tie-down cleats

Stainless steel bow eye and ski eye  
 Soft top with concealed storage  
 Concealed electric horn  
 B.I.A. certified  
 Two (2) fold out lounge seats  
 Eight (8) drink holders  
 Lockable glovebox  
 Side tray storage  
 In-floor ski storage  
 Plush carpet  
 Padded dash tops  
 Padded sport wheel  
 Accent stripping

## DELUXE FEATURES

Includes all Standard Features with the following changes and additions:  
 Teak accents  
 In-floor ski locker with teak lid  
 Padded dash tops with padded walk-thru panels

## OPTIONS

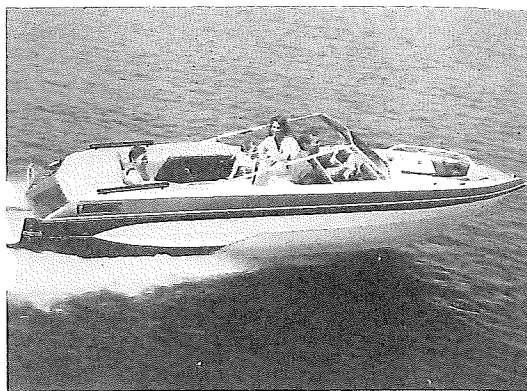
Side and aft curtains  
 Tonneau bow cover  
 Custom mooring cover  
 Walk-thru curtain  
 Soft top boot cover

## ENGINE OPTIONS

120 MerCruiser  
 140 MerCruiser  
 170 MerCruiser  
 120 O.M.C.  
 140 O.M.C.  
 175 O.M.C.  
 125 Volvo



# X-19



## SPECIFICATIONS

LOA 18'8" 5.7M      Approximate Weight 1150 lbs. 522 kg.  
 Beam 88¼" 2.24M      Ice Box Capacity 1.2 c.f. 35 qt. 33 l.  
 Depth 42 1/8" 1.1M      Transom Width 85½" 2.17M  
 Maximum Depth 57½" 1.5M      Max. Horsepower N/A  
 Stor. Capacity 19.4 c.f. .6 cu.m.      Motor Shaft Length N/A  
 LOA on Trailer 23'0" 7M      Steering Power (Where App.)  
 Max. Load 1200 lbs. 644 kg.      Boat Ht. on Trailer 71" 1.8M  
 Max. Pers. 8 or 1100 lbs. 499 kg.      Cockpit Depth 29¾" .8M  
 Trailer SG-19 SGT-19 (See Page 12)      Fuel Capacity: 27 gal.  
 Draft: A. Drive Unit Up 19" .5M  
       B. Drive Unit Down 36½" .9M

## STANDARD COLORS

Cream w/Blue Striping

## DELUXE COLORS

Blue/White  
 Blue/Gray  
 Blue/Blue  
 Red/White  
 Red/Gray

# X-19

## STANDARD FEATURES

Two (2) fold out lounge seats  
 Hand laid fiberglass construction  
 Insulated ice chest under starboard jump seat  
 Color coordinated upholstery  
 Walk-thru tempered glass windshield  
 Bilge pump and blower  
 Anodized aluminum bow rails and boarding ladder  
 Stainless steel bow eye and ski eye  
 Running lights with removable stern light  
 Open bow with cushioned seating  
 Built-in non-skid swim platform with chrome grab handles  
 Four (4) chrome tie-down cleats  
 Lockable glovebox  
 Convenience grab strap  
 In-handle trim control (Mercruiser and 140/170HP OMC only)  
 Meets and exceeds Coast Guard flotation requirements  
 Storage under bow seats, sun lounge, jump seats, plus two (2) side storage trays  
 Soft top with concealed storage  
 Eight (8) drink holders  
 Concealed electric horn  
 In-floor ski storage

Command console with: speedometer, tachometer, electric fuel gauge, voltmeter, oil pressure gauge, engine temperature gauge plus switches for bilge pump, blower, horn and lights  
 Teak step pads  
 Plush carpet  
 Built-in aluminum fuel tank  
 B.I.A. certified  
 Padded dash tops  
 Padded sport wheel  
 Accent striping

## DELUXE FEATURES

*Includes all Standard Features with the following changes and additions:*  
 Teak accents  
 In-floor ski locker with teak lid  
 Padded dash tops with padded walk-thru panels  
 AM/FM stereo cassette with two coaxial speakers  
 Trim gauge

## OPTIONS

Custom mooring cover  
 Walk-thru curtain  
 Soft top boot cover  
 Side and aft curtains  
 Tonneau cover

## ENGINE OPTIONS

120 Mercruiser  
 140 Mercruiser  
 170 Mercruiser  
 120 O.M.C.  
 140 O.M.C.  
 175 O.M.C.  
 125 Volvo

# CX-19



## SPECIFICATIONS

LOA 18'10½" 5.7M	Approx. Wt. 1405 lbs. 658 kg.
Beam 87" 2.2M	Ice Box Capacity 1.2 c.f. 35 qt. 33 l.
Depth 57" 1.4M	Transom Width 83½" 2.1M
Maximum Depth 68" 1.7M	Max. Horsepower N/A
Stor. Capacity 25.6 c.f. .7 cu.m.	Motor Shaft Length N/A
LOA on Trailer 22¼" 6.71M	Cockpit Depth 27½" .7M
Steering Mechanical—	Boat Ht. on Trailer 82¾" 2.1M
Rack and Pinion	Fuel Capacity 33 gal.
Max. Load 1200 lbs. 544 kg.	
Max. Pers. 8 or 1200 lbs. 544 kg.	
Trailer SG-19 SGT-19 (See Page 12)	
	Draft: A. Drive Unit Up N/A
	B. Drive Unit Down N/A

## COLORS

Blue/White  
 Blue/Gray  
 Blue/Blue  
 Red/White  
 Red/Gray

# CX-19

## FEATURES

Newly designed, fold-out sleeper seats  
 Insulated ice chest: under starboard jumpseat  
 Tempered glass windshield with center vent  
 Oversized smoked plexiglass hatch for easy bow access  
 Bilge pump and blower  
 Stainless steel bow rails  
 Stainless steel bow eye and ski eye  
 In-handle trim control (Mer-cruiser and 140/170HP OMC)  
 Storage under lounge seats, jump seat, cabin bunk cushions, plus two (2) side storage trays  
 Soft top with concealed storage  
 Command console with:  
 Speedometer, tachometer, electric fuel gauge, voltmeter, oil pressure gauge, engine temperature gauge, trim gauge, plus switches for bilge pump, blower, horn and lights  
 Ten (10) drink holders  
 Teak swim platform with anodized aluminum boarding ladder  
 Teak step pads

Jumpseats convert to full width sun lounge  
 Two (2) bi-fold cabin doors  
 Lockable hasp for cabin securement with concealed finger latch on each cabin door  
 Sleeping accommodations for four (4) adults  
 Portable head with hold down assembly  
 Tempered glass windshield with center vent  
 Two removable center cushions in cabin provide concealment for portable head, seated legroom, or full length and width cabin bunk  
 AM/FM stereo cassette with two coaxial speakers  
 Accent striping  
 Cabin windows  
 Teak accents  
 Padded sport wheel  
 Padded dash tops

## OPTIONS

Side and aft curtains  
 Custom mooring cover  
 Soft top boot cover

## ENGINE OPTIONS

120 Mercruiser  
 140 Mercruiser  
 170 Mercruiser  
 120 O.M.C.  
 140 O.M.C.  
 175 O.M.C.  
 125 Volvo

# SSV-187



## SPECIFICATIONS

LOA 18'1/4" 5.5M	Approx. Wt. 1350 lbs. 612 kg.
Beam 88 3/4" 2.3M	Ice Box Cap. .67 c.f. 20 qt. 19 l.
Depth 44" 1.1M	Transom Width 85 3/4" 2.2M
Maximum Depth 58" 1.5M	Motor Shaft Length 20" .5M
Stor. Capacity 18.8 c.f. .45 cu.m.	Max. Horsepower 150
LOA on Trailer 21'7" 6.6M	Cockpit Depth 27" .7M
Steering Rack and Pinion	Boat Ht. on Trailer 75" 1.9M
Max. Load 1675 lbs. 760 kg.	Fuel Capacity 33 gallons
Max. Pers. 8 or 1100 lbs. 499 kg.	
Trailer SG-19 (See Page 12)	
	Draft: A. Drive Unit Up 14" .35M
	B. Drive Unit Down 30" .76M

## COLORS

Metalflake Brown/Cream	Opaque Blue/Blue
Metalflake Black/Gray	Opaque Red/Gray
Metalflake Silver/Gray	Opaque Red/White
Metalflake Red/White	Opaque Blue/White
Metalflake Blue/Blue	Opaque Brown/Cream
	Opaque Blue/Gray

# SSV-187

## STANDARD FEATURES

Stainless steel bow rails  
Teak taffrails  
Storage: under bow seats, under jump seats, under splashwell and in side trays  
In-floor ski locker with teakwood lid and lock  
Concealed electric horn  
Lockable glove box  
Passenger grab handle  
Built-in foot rests  
Built-in fuel tank  
Built-in ice chest under port jumpseat  
Teakwood swim platform with stainless steel ladder  
Deluxe instrument panel with: speedometer, tachometer, fuel gauge and switches for bilge pump/accessory, panel/interior lights, navigation/anchor lights and horn  
Carpeted storage areas  
Hand-laid fiberglass construction  
Drinkholders: including stepped design which accommodates foam-insulated-type drinkholder  
Wrap-around bow seats with backrests  
Running lights with removable stern light

Walk-thru curtain  
Plush carpet  
Stainless steel bow eye and ski eyes  
Level flotation  
Bilge pump  
Two back-to-back, three position contoured lounge seats with removable headrest  
Two cockpit courtesy lights  
Walk-thru tempered glass windshield  
Easy-up soft top system with boot cover, folds for storage under splashwell  
Chrome plated hardware  
Bow and stern teakwood step pads  
Teakwood interior accents  
B.I.A. certified  
Transom height of 21 1/2" for improved performance  
Sony AM/FM stereo cassette player — 6 watts per channel output  
Four 20 watt Sony coaxial speakers  
Electric power antenna  
Fore and aft adjustment for driver's seat

## OPTIONS

Side and stern curtains  
Tonneau bow cover  
Custom mooring cover



# SSV-189



## SPECIFICATIONS

LOA 18'1 1/4" 5.5M	Ice Box Cap. .67 c.f. 20 qt. 19 l.
Beam 88 3/4" 2.3M	Transom Width 85 3/4" 2.2M
Depth 44" 1.1M	Max. Horsepower N/A
Maximum Depth 58" 1.5M	Motor Shaft Length N/A
LOA on Trailer 21'7" 6.6M	Cockpit Depth 27" .7M
Steering Rack and Pinion	Boat Ht. on Trailer 75" 1.9M
Max. Load 1200 lbs. 544 kg.	Fuel Capacity 33 gal.
Max. Pers. 8 or 1100 lbs. 499 kg.	
Trailer SG-19 SGT-19 (See Page 12)	
	Draft: A. Drive Unit Up 16 1/2" .42M
	B. Drive Unit Down 32" .8M

## COLORS

Metalflake Brown/Cream	Opaque Blue/Blue
Metalflake Black/Gray	Opaque Red/Gray
Metalflake Silver/Gray	Opaque Red/White
Metalflake Red/White	Opaque Blue/White
Metalflake Blue/Blue	Opaque Brown/Cream
	Opaque Blue/Gray

27

# SSV-189

## STANDARD FEATURES

Stainless steel bow rails  
Teak taffrails  
Storage: under bow seats, under jump seats, under motorcover and in side trays  
In-floor ski locker with teakwood lid and lock  
Concealed electric horn  
Lockable glove box  
Passenger grab handle  
Built-in foot rests  
Built-in fuel tank  
Built-in ice chest  
Teakwood swim platform with stainless steel ladder  
Carpeted storage areas  
Walk-thru curtain  
Hand-laid fiberglass construction  
Drinkholders: including stepped design which accommodates foam-insulated-type drinkholder  
Wrap-around bow seats with backrests  
Running lights with removable stern light  
Plush carpet  
Deluxe instrument panel with: speedometer, tachometer, fuel gauge, voltmeter, oil pressure gauge, water temperature gauge, and switches for bilge pump/blower, panel/interior lights, navigation/anchor lights and horn  
Stainless steel bow eye and ski eyes  
Level flotation  
Bilge pump

Two back-to-back, three position contoured lounge seats with removable headrest  
Two cockpit courtesy lights  
Walk-thru tempered glass windshield  
Easy-up soft top system with boot cover and hidden storage  
Chrome plated hardware  
Bow and stern teakwood step pads  
Teakwood interior accents  
B.I.A. certified  
Sony AM/FM stereo cassette player — 6 watts per channel output  
Four 20 watt Sony coaxial speakers  
Electric power antenna  
Fore and aft adjustment for driver's seat  
Circuit breakers for electrical circuits  
Ski tow ring

## OPTIONS

Side and stern curtains  
Tonneau bow cover  
Custom mooring cover

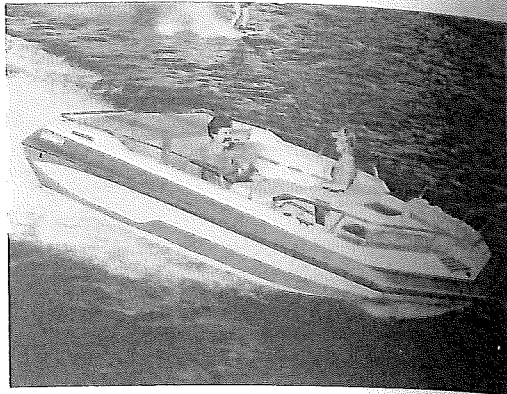
## ENGINE OPTIONS

140 Mercruiser  
170 Mercruiser  
190 Mercruiser  
200 Mercruiser  
230 Mercruiser  
260 Mercruiser  
140 O.M.C.  
175 O.M.C.  
260 O.M.C.

28



# SSV-191



## SPECIFICATIONS

LOA 19'3" 5.87M	Approx. Wt. 1750 lbs. 749 kg
Beam 95 3/4" 2.43M	Ice Box Cap. 1.7 c.f. 52 qts. 49 l.
Depth 37 3/4" .96M	Transom Width 89 1/2" 2.27M
Maximum Depth 53 3/4" 1.37M	Max. Horsepower N/A
Stor. Capacity 35.4 c.f. 1.0 cu.m.	Motor Shaft Length N/A
LOA on Trailer 21'6" 6.55M	Cockpit Depth 26" .7M
Steering Power	Fuel Cap. 33 gal.
(Where Applicable)	Max. Pers. 12 or 1600 lbs. 726 kg.
Max. Load 1600 lbs. 726 kg.	Boat Ht. on Trailer 75" 1.9M
Trailer SS-19 SST-19 (See Page 12)	
	Draft: A. Drive Unit Up 17" .4M
	B. Drive Unit Down 34 1/2" .9M

## COLORS

Metalflake Brown/Cream	Opaque Blue/Blue
Metalflake Black/Gray	Opaque Red/Gray
Metalflake Silver/Gray	Opaque Red/White
Metalflake Red/White	Opaque Blue/White
Metalflake Blue/Blue	Opaque Brown/Cream
	Opaque Blue/Gray

# SSV-191

## STANDARD FEATURES

Sony AM/FM stereo cassette player — 6 watts per channel output  
 Four 20 Watt Sony Coaxial speakers  
 Electric power antenna  
 Motor cover lids with gas cylinder lifting mechanism and concealed latch releases  
 "U" shaped lounge seat  
 Driver swivel bucket seat  
 In-floor ski storage with teak lid and lock  
 Deluxe instrument panel with: speedometer, tachometer, electric fuel gauge, trim gauge, oil pressure gauge, engine temperature gauge, voltmeter, and switches for bilge pump/blower, horn, and lights  
 Bow eye and ski eye  
 Storage under bowseats, lounge seats and sun lounge  
 Deluxe lockable glove box  
 Stainless steel boarding ladder  
 Venturi windshield  
 Stainless steel bow and stern rails  
 Deluxe sport steering wheel  
 Interior lights  
 Engine compartment lighting  
 Concealed electric horn  
 Drinkholder: including stepped design which accommodates foam-insulated-type drinkholder  
 Built-in foot rest under console  
 Built-in fuel tank

Carpeted storage areas  
 Upholstered lockable port side console with storage area underneath  
 Hand-laid fiberglass construction  
 Aft sun lounge  
 Cushioned bow area  
 Entertainment console  
 Built-in insulated ice chest  
 Bilge pump and blower  
 Positive foam flotation  
 B.I.A. certified  
 Easy bow access  
 Teak step pad  
 Running lights with removable stern light  
 Slide mechanism on helmsman seat

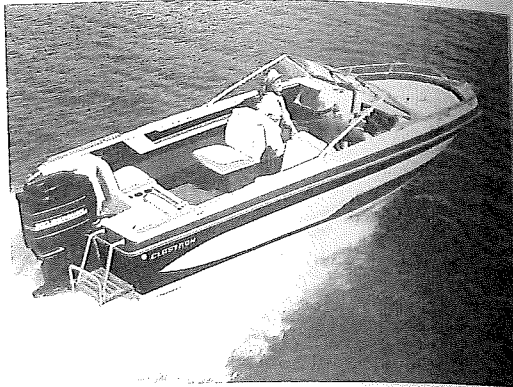
## OPTIONS

Soft top and boot cover  
 Console windshield  
 Side and stern curtains  
 Camper canvas  
 Portable head  
 Cocktail table  
 Forward sun lounge cushions  
 Mercruiser or O.M.C. control  
 Stainless steel steering wheel

## ENGINE OPTIONS

140 Mercruiser  
 170 Mercruiser  
 190 Mercruiser  
 200 Mercruiser  
 230 Mercruiser  
 260 Mercruiser  
 140 O.M.C.  
 175 O.M.C.  
 260 O.M.C.

# SSV-197



This photo for general description only. Actual photo not available.

## SPECIFICATIONS

LOA 19'4" 5.9M	Max. Horsepower 200
Beam 96" 2.4M	Motor Shaft Length 20"
Depth 45" 1.1M	Cockpit Depth 30" .76M
Maximum Depth 61" 1.5M	Fuel Capacity 33 gallons
LOA on Trailer 22'6" 6.85M	Boat Ht. on Trailer 76" 1.9M
Steering Rack and Pinion	Trailer S-19 ST-19 (See Page 12)

## COLORS

Metalflake Brown/Cream	Opaque Blue/Blue
Metalflake Black/Gray	Opaque Red/Gray
Metalflake Silver/Gray	Opaque Red/White
Metalflake Red/White	Opaque Blue/White
Metalflake Blue/Blue	Opaque Brown/Cream
	Opaque Blue/Gray

# SSV-197

## STANDARD FEATURES

- Stainless steel bow rails
- Teak taftrails
- Storage: under bow seats, under jump seats, under splashwell and in side trays
- In-floor ski locker with teakwood lid and lock
- Concealed electric horn
- Lockable glove box
- Passenger grab handle
- Built-in foot rests
- Built-in fuel tank
- Built-in ice chest under port jump seat
- Twin teakwood swim platforms with stainless steel ladder
- Deluxe instrument panel with: speedometer, tachometer, fuel gauge and switches for bilge pumps/ accessory, panel/interior lights, navigation/anchor lights and horn
- Carpeted storage areas
- Hand-laid fiberglass construction
- Drinkholders: including stepped design which accommodates foam-insulated-type drinkholder
- Wrap-around bow seats with back rests
- Running lights with removable stern light

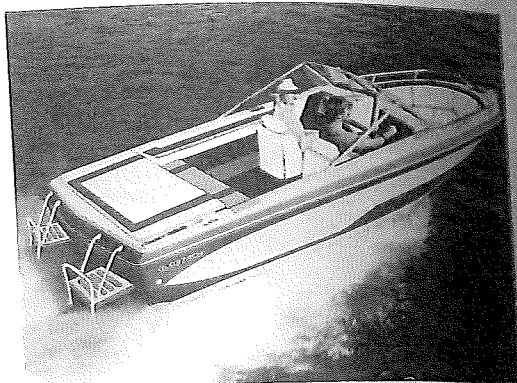
- Walk-thru curtain
- Plush carpet
- Stainless steel bow eye and ski eye
- Level flotation
- Bilge pump
- Two back-to-back, three-position contoured lounge seats with removable headrest
- Two cockpit courtesy lights
- Walk-thru tempered glass windshield
- Easy-up soft top system with boot cover and hidden storage
- Chrome plated hardware
- Bow and stern teakwood step pads
- Teakwood interior accents
- B.I.A. certified
- Transom height of 21 1/4" for improved performance
- Sony AM/FM stereo cassette player — 6 watts per channel output
- Four 20 watt Sony coaxial speakers
- Electric power antenna
- Fore and aft adjustment for driver's seat

## OPTIONS

- Side and stern curtains
- Tonneau bow cover
- Custom mooring cover



# SSV-199



This photo for general description only. Actual photo not available.

## SPECIFICATIONS

LOA 19'4" 5.9M	Motor Shaft Length N/A
Beam 96" 2.4M	Cockpit Depth 36" 76M
Depth 45" 1.1M	Boat Ht. on Trailer 76" 1.9M
Maximum Depth 61" 1.5M	Fuel Capacity 33 gallons
LOA on Trailer 22'6 1/4" 6.86M	Max. Horsepower N/A
Steering Rack and Pinion	Trailer S-19 ST-19 (See Page 12)

## COLORS

Metalflake Brown/Cream	Opaque Blue/Blue
Metalflake Black/Gray	Opaque Red/Gray
Metalflake Silver/Gray	Opaque Red/White
Metalflake Red/White	Opaque Blue/White
Metalflake Blue/Blue	Opaque Brown/Cream
	Opaque Blue/Gray

# SSV-199

## STANDARD FEATURES

- Motor cover lid with gas cylinder lifting mechanism
- Stainless steel bow rails
- Teak railrails
- Storage: under bow seats, under jump seats, under sunlounger and in side trays
- In-floor ski locker with teakwood lid and lock
- Engine compartment lighting
- Concealed electric horn
- Lockable glove box
- Passenger grab handle
- Built-in foot rests
- Built-in fuel tank
- Twin teakwood swim platforms with stainless steel ladder
- Deluxe instrument panel with: speedometer, tachometer, fuel gauge and switches for bilge pump/ accessory, panel/interior lights, navigation/anchor lights and horn
- Carpeted storage areas
- Walk-thru curtain
- Hand-laid fiberglass construction
- Drinkholders: including stepped design which accommodates foam-insulated-type drinkholder
- Wrap-around bow seats with backrests
- Running lights with removable stern light
- Push carpet
- Two swivel bucket seats with built-in headrest, bench seat and sunlounger

- Stainless steel bow eye and ski eyes
- Level flotation
- Bilge pump
- Two cockpit courtesy lights
- Walk-thru tempered glass windshield
- Easy-up soft top system with boot cover and concealed storage
- Chrome plated hardware
- Bow and stern teakwood step pads
- Teakwood interior accents
- B.I.A. certified
- Sony AM/FM stereo cassette player — 6 watts per channel output
- Four 20 watt Sony coaxial speakers
- Electric power antenna
- Fore and aft adjustment for drivers seat
- Circuit breakers for electrical circuits
- Removable Igloo ice chest
- Ski tow ring

## OPTIONS

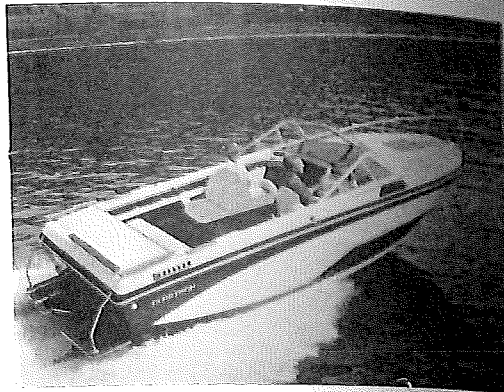
- Side and stern curtains
- Tonneau bow cover
- Custom mooring cover

## ENGINE OPTIONS

- 140 Mercruiser
- 170 Mercruiser
- 190 Mercruiser
- 200 Mercruiser
- 230 Mercruiser
- 260 Mercruiser
- 140 O.M.C.
- 175 O.M.C.
- 260 O.M.C.



# V-233



## SPECIFICATIONS

LOA 23'3 3/4" 7.11M	Ice Box Cap. 1.6 c.f. 50 qt. 48 l.
Beam 96" 2.4M	Transom Width 94 1/2" 2.4M
Depth 62 1/2" 1.6M	Max. Horsepower N/A
Maximum Depth 81" 2.1M	Motor Shaft Length N/A
LOA on Trailer 27'9" 8.46M	Cockpit Depth 33 1/2" 85M
Steering Rack and Pinion	Fuel Capacity 87 gallons
Boat Ht. on Trailer 97 3/4" 2.48M	Max. Load 1500 lbs.
Trailer SGT-23 (See Page 12)	Approx. Wt. 2650 lbs.
Draft: A. Drive Unit Up 23 1/2" .6M	
B. Drive Unit Down 40 1/2" 1.0M	

## COLOR

Opaque Red/White  
Opaque Blue/White

## ENGINE OPTIONS

190 Mercruiser  
200 Mercruiser  
230 Mercruiser  
260 Mercruiser  
260 O.M.C.

# V-233

## STANDARD FEATURES

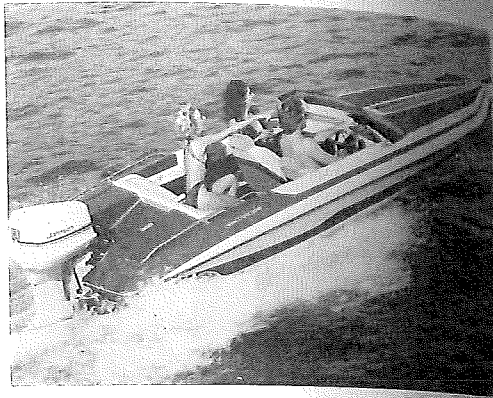
Sony AM/FM stereo cassette player - 6 watts per channel output  
Four 20 watt Sony coaxial speakers - two in cockpit and two in cabin  
Electric power antenna  
Stainless steel sport wheel  
Carpeted storage areas  
Hand-laid fiberglass construction with integrated fiberglass stringers  
Custom molded dash with command instrumentation: speedometer, tachometer, electric fuel gauge, oil pressure gauge, engine temperature gauge, trim gauge, voltmeter and switches for bilge pump, bow, horn, lights, and accessories  
Storage: under cockpit floor with teakwood lid, under each of the three cabin cushions, under the helm, cabin side trays, under sleeper seat and forward of bow cabin bulkhead  
Teak step pads  
Built-in aluminum fuel tank  
Inland lighting  
Automatic bilge pump  
In-handle trim control  
Bilge blower  
B.I.A. certified  
Power steering  
Foam flotation  
Stainless steel bow rails  
Sea storage under aft lid  
Mercruiser or OMC control  
Rear bench seat/sun lounge removable cushions on outboard sides for access aft  
Welded frame windshield with side vents  
Drinkholder, including stepped design which accommodates foam-insulated-type drinkholder  
Oversized smoked plexiglass hatch for easy bow access

Deep plush marine carpet  
Teak taffrail  
Cabin side windows  
Soft top with boot cover  
Cockpit courtesy lights  
Concealed soft top storage under aft lid  
Cabin lights  
Built-in cabinet with bottle and ice storage  
Full width fiberglass swim platform with teakwood inserts and stainless steel boarding ladder  
Bow eye and ski eyes  
Trumpet horns  
Lockable teakwood cabin doors  
Portable head with hold-down assembly  
Seated headroom for five in cabin  
Cocktail table with mounting locations in cabin or cockpit  
Sleeping accommodations for four  
Available seating arrangements: two back-to-back lounge seats or one bucket and one back-to-back lounge seat; or two bucket seats or one back-to-back lounge seat with galley and helmsman seat. All configurations come with bench seat aft. Galley assembly includes ice box, water tank, alcohol stove, stainless steel sink, and electric water pump.  
Two Removable Igloo ice chests stow under bench seat (one ice chest is ordered w/galley option)  
Cigarette lighter and ash trays  
Cabin mirror on forward bulkhead  
Fore and aft seat adjustment on driver's seat

**OPTIONS**  
Hydraulic leveller  
Side and stern canvas  
Camper canvas



# CVX-16



## SPECIFICATIONS

LOA 16'8" 5.1M	Approx. Wt. 720 lbs. 327 kg
Beam 78 1/2" 2.0M	Ice Box Cap. 1.1 c.f. 34 qt. 32 l.
Depth 32" .81M	Transom Width 77" 1.9M
Maximum Depth 40" 1.0M	Max. Horsepower 125
Stor. Capacity 17.8 c.f. .5 cu.m.	Motor Shaft Length 28"
LOA on Trailer 19'1/4" 5.8M	Cockpit Depth 26 1/2" .7M
Steering Mechanical	Boat Ht. on Trailer 55" 1.4M
Max. Load 1200 lbs. 562 kg.	Trailer SC-16 (See Page 12)
Max. Pers. 5 or 750 lbs. 340 kg.	Fuel Cap. 16 gallons
Draft: A. Drive Unit Up 10 1/2" .3M	
B. Drive Unit Down 28" .7M	

## COLORS

Metalflake Blue/Blue  
 Metalflake Black/Gray  
 Metalflake Silver/Gray  
 Metalflake Red/White

# CVX-16

## STANDARD FEATURES

Built-in ice chest  
 Bow storage compartment  
 Instrument panel with:  
 Tachometer, speedometer,  
 fuel gauge  
 Stainless steel boarding  
 ladder  
 Stainless steel stern rails  
 Carpeted storage areas  
 Hand-laid fiberglass  
 construction  
 Two foam-padded bucket  
 seats, port seat swivels  
 Padded stern bench seat with  
 ice chest and storage  
 beneath  
 Drinkholder, including  
 stepped design  
 which accommodates  
 foam-insulated-type  
 drinkholder

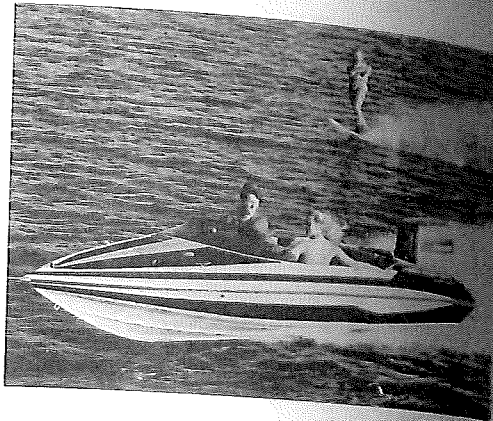
Storage under splashwell  
 Side tray storage  
 Storage tray built into dash  
 Level flotation  
 Custom sport wheel  
 Built-in fuel tank  
 Stainless steel bow eye and  
 ski eyes  
 Running lights with  
 removable stern light  
 Level foam flotation  
 Plush carpet  
 Concealed electric horn  
 Contoured tinted plexiglass  
 windscreen  
 Bow ski locker  
 Lockable glove box  
 B.I.A. certified

## OPTIONS

Custom mooring cover



# CVX-17



## SPECIFICATIONS

LOA 17'7" 5.4M	Approx. Wt. 875 lbs. 397 kg.
Beam 78" 2.0M	Ice Box Cap. 1.7 c.f. 51 or 48 l.
Depth 34½" .81M	Transom Width 77" 1.9M
Maximum Depth 40¼" 1.02M	Max. Horsepower 140
Stor. Capacity 19.5 c.f. .55 cu.m.	Motor Shaft Length 20"
LOA on Trailer 20'6" 6.25M	Cockpit Depth 26½" .67M
Steering Mechanical	Boat Ht. on Trailer 55" 1.4M
Max. Load 1245 lbs. 565 kg.	Trailer SC-17 (See Page 12)
Max. Pers. 5 or 750 lbs. 340 kg.	Fuel Cap. 18 gallons
	Draft: A. Drive Unit Up 10¾" .27M
	B. Drive Unit Down 28¼" .72M

## COLORS

- Metalflake Blue/Blue
- Metalflake Black/Gray
- Metalflake Silver/Gray
- Metalflake Red/White

# CVX-17

## STANDARD FEATURES

- Two stern ice chests with padded covers
- Bow storage compartment
- Stainless steel stern rails
- Leve. flotation
- Stainless steel boarding ladder
- Storage under splashwell
- Side tray storage
- Hand-laid fiberglass construction
- Two foam-padded bucket seats, port seat swivels
- Padded stern bench seat with storage beneath
- Push carpet
- Drinkholder, including stepped design which accommodates foam-insulated-type drinkholder

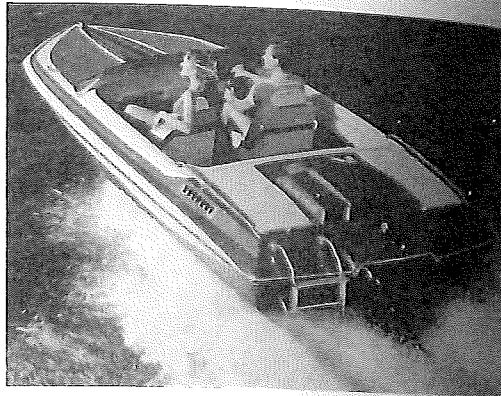
- Built-in ski storage
- Contoured tinted plexiglass windscreen
- Chrome-plated hardware
- Concealed electric horn
- Built-in fuel tank
- Running lights with removable stern light
- Custom instrumentation: speedometer, electric fuel gauge, tachometer
- Grab bar
- Custom sport wheel
- Stainless steel bow eye and ski eyes
- Lockable glove box
- B.I.A. certified

## OPTIONS

- Custom mooring cover



## CVX-18



### SPECIFICATIONS

LOA 18'1½" 5.52M                      Approx. Wt. 950 lbs. 476 kg  
 Beam 90" 2.21M                      Ice Box Cap. 1.1 c.f. 34 qt. 32 l.  
 Depth 37" .9M                      Transom Width 86" 2.2M  
 Maximum Depth 43¼" 1.1M                      Max. Horsepower N/A  
 Stor. Capacity 17.0 c.f. .48 cu.m.                      Motor Shaft Length N/A  
 LOA on Trailer 21¾" 6.42M                      Cockpit Depth 25½" .65M  
 Steering Power Steering (Where Applicable)  
 Boat Ht. on Trailer 58½" 1.49M  
 Max. Load 900 lbs.                      Fuel Capacity 27 gallons  
 Max. Persons Load 6 or 900 lbs. 408 kg.  
 Trailer SC-18 (See Page 12)  
 Draft: A. Drive Unit Up 12½" .32M  
           B. Drive Unit Down 30" .76M

### COLORS

Metallflake Blue/Blue  
 Metallflake Black/Gray  
 Metallflake Silver/Gray  
 Metallflake Red/White

## CVX-18

### STANDARD FEATURES

Built-in ice box  
 Custom sport wheel  
 Bow eye and ski eye  
 Stainless steel boarding ladder  
 Stainless steel rails  
 Two bow storage areas  
 Two padded stern lids with storage underneath  
 Deluxe grab bar  
 Instrument panel with:  
     Speedometer, tachometer,  
     fuel gauge, oil pressure  
     gauge, engine tempera-  
     ture gauge, voltmeter,  
     trim gauge and switches  
     for bilge pump, blower,  
     horn and lights  
 Carpeted storage areas  
 Built-in fuel tank  
 Slide mechanism on  
 Helmman's seat  
 Drinkholder, including step-  
 ped design which accom-  
 modates foam-insulated-  
 type drinkholder.  
 Hand-laid fiberglass  
 construction

Side Tray Storage  
 Two bucket seats with swi-  
 vels and headrests  
 Bench seat with ice chest  
 and storage beneath  
 Concealed electric horn  
 Running lights with  
 removable stern light  
 Wrap-around tinted  
 plexiglass windscreen  
 Positive foam flotation  
 Push carpet  
 B.I.A. certified

### OPTIONS:

Custom mooring cover  
 Mercruiser or O.M.C.  
 control

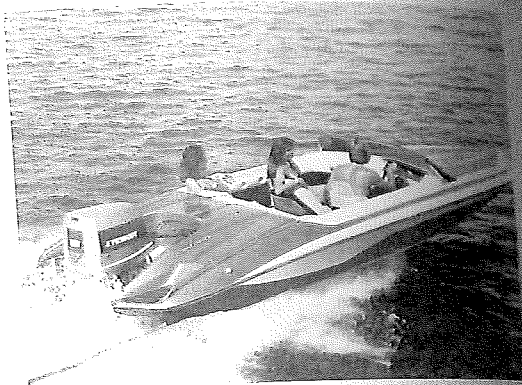
### ENGINE OPTIONS:

200 Mercruiser  
 230 Mercruiser  
 260 Mercruiser\*\*  
 260 O.M.C.\*

\*Stainless steel prop  
 standard  
 \*\*Stainless steel prop  
 (cleaver)



# CVX-20 SPRINT



## SPECIFICATIONS

LOA 20'3" 6.17	Approx. Wt. 1050 lbs. 476 kg
Beam 90 1/4" 2.29M	Ice Box Cap. .6 c.f. 18 qt. 17 l.
Depth 37" .94M	Transom Width 84 3/4" 2.13M
Maximum Depth 48" 1.22M	Max. Horsepower 200
Stor. Capacity 35.8 c.f. 1.01 cu.m.	Motor Shaft Length 20"
LOA on Trailer 21'9 1/2" 6.64M	Cockpit Depth 26" 58M
Steering Dual Cable Mechanical	Fuel Cap. 27 gallons
Max. Load 1515 lbs. 687 kg.	Boat Ht. on Trailer 63" 15M
Max. Pers. 6 or 1025 lbs. 465 kg.	
Trailer SC-20 O/B SCT-20 O/B (See Page 12)	
Draft: A. Drive Unit Up 12 1/2" .32M	
B. Drive Unit Down 30" .76M	

## COLORS

Metalflake Blue/Blue  
 Metalflake Black/Gray  
 Metalflake Silver/Gray  
 Metalflake Red/White

# CVX-20 SPRINT

## STANDARD FEATURES

Two bow storage covers  
 Stainless steel stern rails  
 Instrument panel with:  
 speedometer, tachometer,  
 fuel gauge and switches  
 for bilge pump, horn,  
 and lights  
 Deluxe grab bar  
 Custom sport wheel  
 Positive foam flotation  
 Stainless steel boarding  
 ladder  
 Carpet storage areas  
 Concealed electric horn  
 Smoked custom plexiglass  
 windshield  
 Running lights  
 Bow cleats  
 Full width wrap-around  
 rear seat

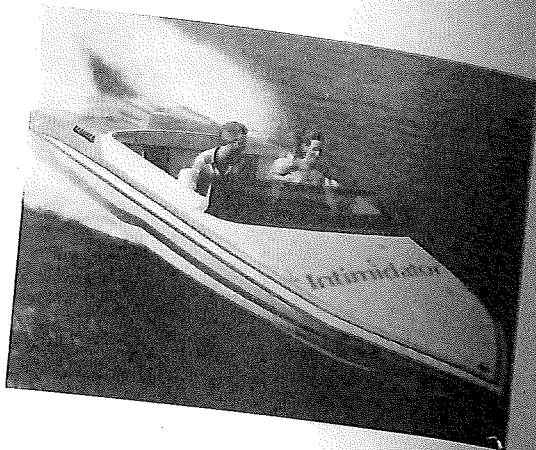
Built-in ski storage  
 Drinkholder: including  
 stepped design which  
 accommodates foam-  
 insulated-type drinkholder  
 Forward bucket seats swivel  
 Slide mechanism on  
 helmsman seat  
 Deluxe center console with  
 lockable storage  
 Courtesy light  
 Teak trim and boarding steps  
 Plush pile carpet  
 Bilge pump  
 Deluxe side trays  
 Built-in fuel tank  
 Custom ski tow

## OPTIONS

Custom mooring cover



# INTIMIDATOR



## SPECIFICATIONS

LOA 20'3 1/2" 6.2M  
 Beam 87 1/2" 2.2M  
 Depth 37-5/8" .94M  
 Maximum Depth 48 1/4" 1.23M  
 Stor. Capacity 26.0 c.f. .73 cu.m.  
 LOA on Trailer 23'1 3/4" 7.05M  
 Steering Power  
 Max. Load 1050 lbs. 476 kg.  
 Max. Pers. 6 or 1050 lbs. 476 kg.  
 Trailer SC-20 I/O SCT-20 I/O (See Page 12)  
 Draft: A. Drive Unit Up 12" .3M  
       B. Drive Unit Down 29 1/2" .75M  
 Approx. Wt. 1400 lbs 636 kg  
 Ice Box Cap. .6 c.f. 16 qt. 17 l.  
 Transom Width 85" 2.1M  
 Max. Horsepower N/A  
 Motor Shaft Length N/A  
 Cockpit Depth 27" .69M  
 Boat Ht. on Trailer 63 1/4" 1.61M  
 Fuel Capacity 27 gallons

## COLORS

Metalflake Blue/Blue  
 Metalflake Black/Gray  
 Metalflake Silver/Gray  
 Metalflake Red/White

# INTIMIDATOR

## STANDARD FEATURES

Stainless steel stern rails  
 Two bow storage compartments  
 Carpeted storage areas  
 Hand laid fiberglass construction  
 Two deep foam-padded swivel bucket seats  
 Padded stern bench with ski storage beneath  
 Center console with lockable storage, built-in  
 Cockpit courtesy light  
 Grab bar  
 Deep plush marine carpet  
 Custom sport wheel  
 Custom instrumentation with: speedometer, tachometer, engine temperature gauge, oil pressure gauge, electric fuel gauge, volt-meter, trim indicator gauge  
 In-handle trim control  
 Slide mechanism on helm'sman seat  
 Drinkholder including stepped design which accommodates foam-insulated-type drinkholder

Custom ski tow  
 Stainless steel boarding ladder  
 Built-in fuel tank  
 Power steering  
 Bow eye and ski eyes  
 Fastback transom with teak boarding steps  
 Custom dual polished aluminum wet exhaust stacks  
 Running lights with removable stern light  
 Bilge pump and blower  
 Stainless steel propeller  
 Foam flotation  
 B.I.A. certified  
 Contoured tinted plexiglass windscreen

## OPTIONS

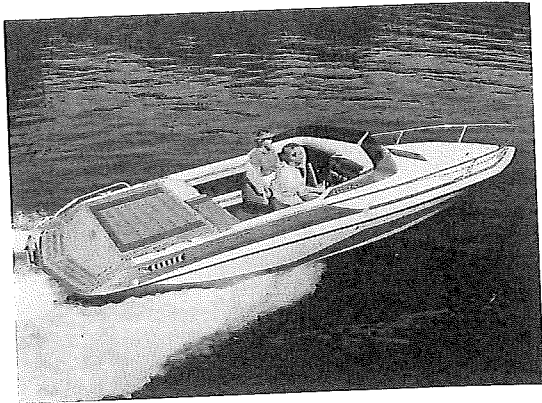
Custom mooring cover  
 Exhaust silencers  
 Mercruiser or O.M.C. control

## ENGINE OPTIONS

260 Mercruiser\*  
 260 O.M.C.\*

\*Stainless steel prop standard

## CV-23



### SPECIFICATIONS

LOA 23'4 3/4" 7.1M  
Beam 91 1/2" 2.3M  
Depth 50" 1.3M  
Maximum Depth 58 3/4" 1.5M  
Stor. Capacity 14.1 c.f. 4 cu.m.  
LOA on Trailer 26'2 1/2" 8.0M  
Steering Power  
Max. Load 1200 lbs. 544 kg.  
Max. Pers. 8 or 1200 lbs. 544 kg.  
Draft: A. Drive Unit Up 12 1/4" .3M  
B. Drive Unit Down 29 3/4" .8M

Approx. Wt. 1400 lbs. 636 kg.  
Ice Box Cap. 1.6 c.f. 48 qt. 45 l.  
Transom Width 85" 2.2M  
Max. Horsepower N/A  
Motor Shaft Length N/A  
Cockpit Depth 32 3/4" .8M  
Boat Ht. on Trailer 74 1/4"  
Trailer SCT-23 (See Page 12)  
Fuel Cap. 50 gallons

### COLORS

Metalflake Blue/Blue  
Metalflake Black/Gray  
Metalflake Silver/Gray  
Metalflake Red/White

## CV-23

### STANDARD FEATURES

Sony AM/FM stereo cassette player — 6 watts per channel output  
Four 20 Watt Sony coaxial speakers  
Electric power antenna  
Stainless steel boarding ladder  
Molded-in swim platform with teak step pads  
Cabin privacy curtain  
Cabin seating converts to full sleep area  
Bilge blower  
Carpeted storage areas  
Engine compartment lighting  
Hand-laid fiberglass construction  
Padded stern sun lounge with deep storage beneath  
Padded side storage trays  
Smoked plexiglass windscreen  
Stainless steel bow and stern rails  
Motor cover lids with gas cylinder lifting mechanism  
Drinkholder: including stepped design which accommodates foam-insulated-type drinkholder  
Custom instrumentation with: speedometer, tachometer, electric fuel gauge, oil pressure gauge, engine temperature gauge, voltmeter  
Plush carpet

Power steering  
Foam flotation  
Built-in fuel tank  
Spacious daycruiser cabin  
Plexiglass bow hatch with inside latches  
Running lights with removable stern light  
Two deep foam-padded swivel bucket seats with headrests  
Removable ice chest stores under stern sun lounge  
Padded stern bench with ski storage beneath  
Teak step pads  
Automatic bilge pump  
Cockpit courtesy light  
Bow eye and ski eyes  
Stainless steel prop  
B.I.A. certified  
Deluxe sport steering wheel  
Slide mechanism on helmman seat  
Cabin mirror on forward bulkhead  
Ski tow bar  
Teakwood table with drinkholders

### OPTIONS

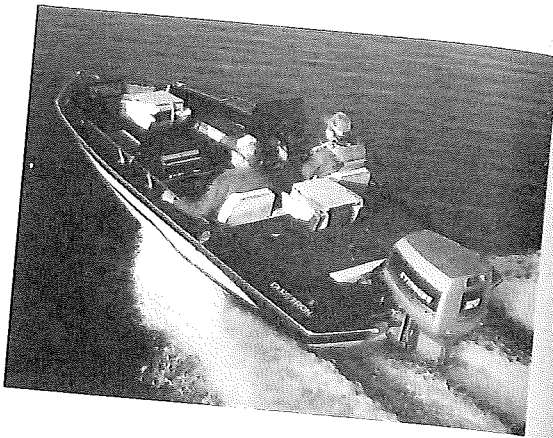
Enclosure canvas  
Custom mooring cover  
MerCruiser or O.M.C. control & trim gauge

### ENGINE OPTIONS

260 MerCruiser  
260 O.M.C.



# HPV-165



## SPECIFICATIONS

LOA 16'2 1/4" 5.0M  
 Beam 79 1/4" 2.0M  
 Depth 33" .8M  
 Maximum Depth 48" 1.2M  
 Stor. Capacity 13.5 c.f. .38 cu.m.  
 LOA on Trailer 19'0" 5.79M  
 Steering Mechanical  
 Max. Load 1150 lbs. 522 kg.  
 Max. Pers. 5 or 610 lbs. 277 kg.  
 Draft: A. Drive Unit Up 11" .28M  
       B. Drive Unit Down 28 3/4" .73M  
 Approx. Wt. 950 lbs. 431 kg.  
 Ice Box Cap. 1.6 c.f. 48 qt. 45 l.  
 Transom Width 77 1/4" 2.0M  
 Max. Horsepower 120  
 Motor Shaft Length 20"  
 Cockpit Depth 19" .48M  
 Boat Ht. on Trailer 63" 1.6M  
 Trailer SG-16 (See Page 12)  
 Fuel Capacity 18 gallons

## COLORS

Metalflake Blue/Blue  
 Metalflake Black/Gray  
 Metalflake Silver/Gray  
 Metalflake Red/White

# HPV-165

## STANDARD FEATURES

Lockable rod locker  
 Lockable in-floor ski locker  
 Carpeted storage areas  
 Forward and aft livewells  
 Carpeted bow locker lids  
   with removable cushions  
   and leanbacks  
 Stainless steel rails  
 Deluxe lockable glove box  
 Built-in fuel tank  
 Fold-down driver and  
   passenger seats  
 Carpeted storage lockers  
 One level work area including  
   bow casting platform and  
   two adjoining storage lids  
 Remote livewell drain system  
   for both livewells  
 Deluxe style fishing seats  
 Dry storage in two (2) bow  
   lockers and in three (3) aft  
   compartments  
 Automatic livewell aerator  
   system  
 Matching switch plate and  
   bow panel plate  
 Heavy-duty livewell hose  
 Concealed electric horn  
 Hand-laid fiberglass  
   construction  
 Bench seat between helms-  
   man and passenger seats,  
   carpeted storage below  
 Aft ice chest  
 Marine hardware, bow and  
   ski eyes  
 Stern battery/storage  
   compartment  
 Seat extension storage  
 B.I.A. certified

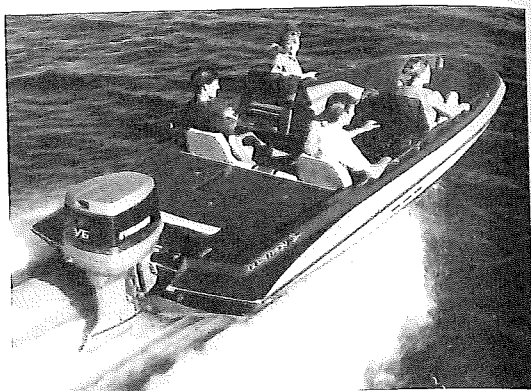
Drinkholder: including  
   stepped design which  
   accommodates foam-  
   insulated-type drinkholder  
 Running lights with  
   removable stern light  
 Tachometer  
 Speedometer  
 Two (2) folding removable  
   spring mounted seats,  
   swiveling 360°  
 Elevated casting platforms  
   fore and aft, storage below  
 Reinforced foredeck for  
   mounting trolling motor  
 Helmsman custom console:  
   softgrip competition steer-  
   ing wheel, mechanical  
   steering, electric fuel  
   gauge, switches for live-  
   well, pump, accessories.  
   inland lighting

Custom bow panel:  
   pre-wired trolling motor  
   outlet with 12/24 volt  
   switch, molded plug with  
   two connections, engine  
   tilt switch, volt gauge with  
   battery test switch, charge  
   switch, and courtesy light  
 Bilge pump  
 Level foam flotation  
 6 gauge trolling motor leads

## OPTIONS

Tinted plexiglass sleek or  
   upright windscreens  
 Boarding ladder  
 Custom mooring cover  
 Pole seat casting chair  
 Power pedestal

# HPV-175



## SPECIFICATIONS

LOA 17'9½" 5.4M                      Approx. Wt. 1115 lbs. 507 kg.  
 Beam 91¼" 2.3M                      Ice Box Cap. 1.6 c.f. 48 qt. 45 l.  
 Depth 35¾" .91M                      Transom Width 90" 2.2M  
 Maximum Depth 51½" 1.31M                      Max. Horsepower 185  
 Stor. Capacity 23.5 c.f. .67 cu.m.                      Motor Shaft Length 20"  
 LOA on Trailer 20'7¼" 6.28M                      Cockpit Depth 20½" .52M  
 Steering Mechanical                      Boat Ht. on Trailer 66½" 1.69M  
 Max. Load 1400 lbs. 635 kg.                      Trailer SH-17 (See Page 12)  
 Max. Pers. 7 or 900 lbs. 408 kg.                      Fuel Capacity 25 gallons  
 Draft: A. Drive Unit Up 11" .28M  
               B. Drive Unit Down 28½" .72M

## COLORS

Metalflake Blue/Blue  
 Metalflake Black/Gray  
 Metalflake Silver/Gray  
 Metalflake Red/White

# HPV-175

## STANDARD FEATURES

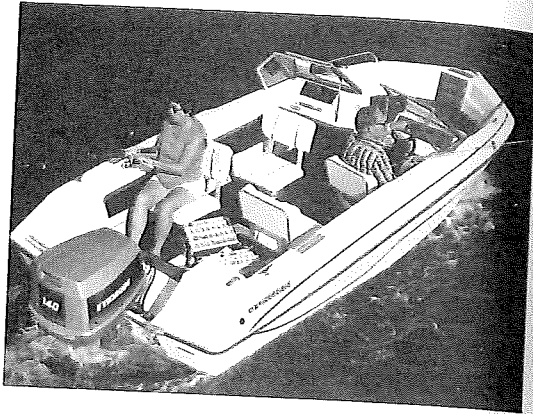
In-floor lockable ski locker  
 Two lockable rod/ski lockers  
   with carpeted lids and  
   removable cushions  
 Stainless steel rails  
 Remote livewell drain  
   systems  
 Fold-down driver and  
   passenger seats  
 Carpeted storage lockers  
 Automatic livewell aerating  
   system  
 Matching switch plate and  
   bow panel plate  
 Heavy-duty livewell hose  
 Deluxe style fishing chairs  
 Concealed electric horn  
 Built-in fuel system  
 Hand-laid fiberglass  
   construction  
 Two (2) folding removable  
   spring mounted seats,  
   swivel 360° (2 position  
   front seat mount)  
 Bench seat between helms-  
   man and passenger seats,  
   carpeted storage below  
 Elevated casting platform  
   fore and aft, storage below  
 Forward circulating livewell  
   Aft — one circulating livewell  
   and one ice chest  
 Seat extension storage  
 Dual cable steering  
 Drinkholder: including  
   stepped design which  
   accommodates foam-  
   insulated-type drinkholder  
 Reinforced foredeck for  
   mounting trolling motor  
 Bilge pump

Helmsman custom console:  
   soft grip competition  
   steering wheel, electric  
   fuel gauge, tachometer,  
   speedometer, switches for  
   livewell pump, bilge pump,  
   inland lighting and horn  
 Custom bow panel: pre-wired  
   trolling motor outlet with  
   12/24 volt switch, molded  
   plug with two connections,  
   engine tilt switch, volt  
   gauge with battery test  
   switch, charge switch, and  
   courtesy light  
 Marine hardware, bow and  
   ski eyes  
 Stern battery/storage  
   compartment  
 Running lights with  
   removable stern light  
 Twin custom consoles with  
   storage tray in passenger  
   side  
 Level foam flotation  
   B.I.A. certified  
   Transom height of 22½"  
   prevents need for jack-  
   plate assembly  
   6 gauge trolling motor leads

**OPTIONS**  
 Tinted plexiglass  
   sleek or upright  
   windcreens  
 Stern boarding ladder  
 Custom mooring cover  
 Pole seat casting chair  
 Upright aluminum framed  
   windshield and soft top kit  
   with walk-thru curtain  
 Power pedestal



# SSV-178



## SPECIFICATIONS

LOA 17'1/4" 5.0M  
Beam 83" 2.1M  
Depth 46 3/4" 1.2M  
Maximum Depth 59" 1.5M  
Stor. Capacity 19.2 c.f.  
LOA on Trailer 21'9" 6.6M  
Steering Mechanical  
Max. Load 1550 lbs. 703 kg.  
Max. Pers. 7 or 1050 lbs. 476 kg.  
Draft: A. Drive Unit Up 10 1/2" .3M  
B. Drive Unit Down 28" .71M

Approx. Wt. 955 lbs. 430 kg.  
Ice Box Cap. 1.3 c.f. 39 qt. 37 l.  
Transom Width 79" 2.0M  
Max. Horsepower 140  
Motor Shaft Length 20"  
Cockpit Depth 30" .8M  
Boat Ht. on Trailer 73" 1.9M  
Trailer SG-17 (See Page 12)  
Fuel Cap. 25 gallons

## COLOR

Opaque Blue/White

# SSV-178

## STANDARD FEATURES

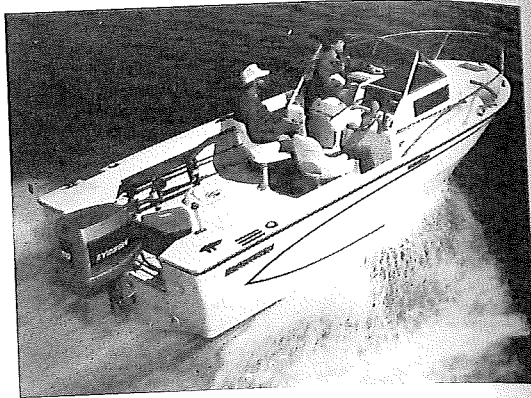
Three removable swivel fishing seats, fixed driver seat  
Bow fishing platform with seat location  
Three cockpit fishing seat locations  
Stainless steel rails  
Sport steering wheel  
Teak bow locker door  
Carpet storage areas  
Concealed electric horn  
Walk-thru curtain  
Opaque gelcoat  
Built-in 32 quart ice chest under bow seat  
Built-in fish/ice box in the stern floor area  
Built-in fuel tank  
Bilge pump (1,250 gallons per hour)  
Soft top with boot  
Reinforced bow area for mounting of trolling motor  
Chrome plated hardware

Reinforced deck area for mounting of rod holders and down riggers  
Electric fuel gauge  
Hand-laid fiberglass construction  
Walk-thru tempered glass windshield  
Running lights with a removable stern light  
Stainless steel bow eye and ski eyes  
Side storage trays with rod holders  
Rack and pinion steering  
Glove box  
Level flotation  
B.I.A. certified  
Speedometer  
Tachometer

## OPTIONS

Stern boarding ladder  
Side and stern curtains  
Custom mooring cover

# V-216



## SPECIFICATIONS

LOA 20'7" 6.3M	Approx. Wt. 2030 lbs. 921 kg.
Beam 96" 2.4M	Ice Box Cap. 3.3 c.f. 99 qt. 93 l.
Depth 64 1/4" 1.6M	Transom Width 91 1/2" 2.3M
Maximum Depth 80 3/4" 2.1M	Max. Horsepower 220
Stor. Capacity 24.5 c.f. .7 cu.m.	Cockpit Depth 24" .6M
Motor Shaft Length Twin 20" Single 25"	Boat Ht. on Trailer 97 1/2" 2.5M
LOA on Trailer 23'9 3/4" 7.3M	Trailer SGT-21 (See Page 12)
Max. Load 2280 lbs. 1034 kg.	Fuel Capacity 75 gallons
Max. Pers. 10 or 1500 lbs. 680 kg.	
Draft: A. Drive Unit Up 19" .5M	
B. Drive Unit Down 46" 1.2M	

## COLOR

Opaque Blue/White

# V-216

## STANDARD FEATURES

- Carpeted storage areas
- Electric horn
- Padded seat forward of center cabin with storage beneath for soft top
- Stainless steel bow rail
- Corrosion-resistant hardware
- Enclosed center cabin with:
  - Cushioned vee berths and in-bulk-head cabinets, space for optional head, sliding cabin windows, folding cabin door with lockable hatch cover
  - ample storage
- Self-bailing cockpit with fiberglass liner
- Built-in fuel tank with electric gauge
- Large in-floor fish-wells/ baitwells with fiberglass lids
- Teak rod racks under gunwales
- Removable splashwell transom board
- Removable battery access panel in splashwell
- Non-skid deck and floor

- Non-skid 14" walkway around center cabin
- Hand-laid fiberglass construction
- Tempered glass tinted windshield
- High-volume bilge pump with automatic float switch
- Recessed rod holders
- Custom instrument panel
- Foam flotation
- Soft top with boot cover
- Cabin lights
- Two (2) helmsman chairs
- Stainless steel steering wheel
- Stainless steel bow and ski eyes
- B.I.A. certified

## OPTIONS

- Deluxe package:
  - speedometer and hour meter
  - Compass kit and windshield wiper (package)
  - Helm enclosure canvas
  - Portable head
  - Custom mooring cover



## ENGINE & PERFORMANCE INFORMATION

The following pages contain data about sterndrives offered in our 1986 product. The approximate weight information on each boat is weighed dry, or without engine or fuel, so adding the weight of the engine and 7 pounds per gallon will give you a very accurate total weight figure.

The following performance data has been compiled by Glastron's Engineering/Boat Test group, and is to be used as a guide in discussing specific models' overall performance. The data will vary depending on water conditions, altitude, wind, etc., and these variances should be noted prior to quoting performance data to the consumer. Glastron will provide additional engine data as it becomes available so that you can speak to speed, fuel consumption and other questions the customer might have regarding Glastron's performance.

<b>MODEL:</b>	<b>MERCURISER 120</b>
Horsepower	120
Cylinders	4
Cubic Inches	153
Compression Ratio	8.5:1
Max. Recommended RPM	4200-4600
Circuit Breaker	40 amp Thermal
Fuel	Regular (93 oct. research) (88 oct. anti-knock index)
Lower Unit Gear Ratio	1.98:1
Tilt	Power
Trim	Power
Length	33¼"
Width	21¾"
Height	19½" (above crankshaft L) 27¾" (overall)
Weight	600 lbs.

<b>MODEL:</b>	<b>MERCURISER 140</b>
Horsepower	140
Cylinders	4
Cubic Inches	181
Compression Ratio	8.5:1
Max. Recommended RPM	4200-4600
Circuit Breaker	40 amp Thermal
Fuel	Regular (93 oct. research) (88 oct. anti-knock index)
Lower Unit Gear Ratio	1.98:1
Tilt	Power
Trim	Power
Length	33¾"
Width	21¾"
Height	19½" (above crankshaft L) 27¾" (overall)
Weight	625 lbs. (pkg. weight)

<b>MODEL:</b>	<b>MERCURISER 170</b>
Horsepower	170
Cylinders	4
Cubic Inches	224
Compression Ratio	8.8:1
Max. Recommended RPM	3800-4200
Circuit Breaker	40 amp Thermal
Fuel	Regular
Lower Unit Gear Ratio	1.84:1
Tilt	Power
Trim	Power
Length	37 13/16"
Height	19¾" (above crankshaft L) 28¼" (overall)
Width	23-5/8"
Weight	750 lbs. (pkg. weight)
<b>MODEL:</b>	<b>MERCURISER 190 w/Power Steering</b>
Horsepower	190
Cylinders	4
Cubic Inches	224
Compression Ratio	8.8:1
Circuit Breaker	40 amp Thermal
Fuel	Regular
Lower Unit Gear Ratio	1.65:1
Tilt	Power
Trim	Power
Length	37 13/16"
Width	26"
Height	19¾" (above crankshaft L) 28¼" (overall)
Weight	

<b>MODEL:</b>	<b>MERCURISER 200 w/Power Steering</b>
Horsepower	200
Cylinders	8
Cubic Inches	305
Compression Ratio	8.5:1
Max. Recommended RPM	3800-4200
Circuit Breaker	40 amp Thermal
Fuel	Regular
Lower Unit Gear Ratio	1.50:1
Tilt	Power
Trim	Power
Length	36 $\frac{3}{16}$ "
Width	28 $\frac{3}{4}$ "
Height	20 $\frac{3}{4}$ " (above crankshaft L) 28 $\frac{1}{2}$ " (overall)
Weight	925 lbs.
<b>MODEL:</b>	<b>MERCURISER 230 w/Power Steering</b>
Horsepower	230
Cylinders	8
Cubic Inches	305
Compression Ratio	8.5:1
Max. Recommended RPM	4200-4600
Circuit Breaker	40 amp Thermal
Fuel	Regular (94 oct. research) (89 oct. anti-knock index)
Lower Unit Gear Ratio	1.50:1
Tilt	Power
Trim	Power
Length	36-3/16"
Width	28 $\frac{3}{4}$ "
Height	20" (above crankshaft L) 27 $\frac{3}{4}$ " (overall)
Weight	975 lbs. (pkg. weight)
<b>MODEL:</b>	<b>MERCURISER 260 w/Power Steering</b>
Horsepower	260
Cylinders	8
Cubic Inches	350
Compression Ratio	8.7:1
Max. Recommended RPM	4200-4600
Circuit Breaker	40 amp Thermal
Fuel	Regular (94 oct. research)
Lower Unit Gear Ratio	1.50:1
Tilt	Power
Trim	Power
Length	36 3/16"
Width	28 $\frac{3}{4}$ "
Height	20" (above crankshaft L) 27 $\frac{3}{4}$ " (overall)
Weight	1000 lbs. (pkg. weight)

<b>MODEL:</b>	<b>OMC 120 Cobra</b>
Horsepower	120
Cylinders	4
Cubic Inches	153
Compression Ratio	8.5:1
Max. Recommended RPM	4200-4600
Circuit Breaker	Fusible link
Fuel	Regular
Lower Unit Gear Ratio	1.71:1
Tilt	Power
Trim	Power
Length	33 $\frac{3}{4}$ "
Width	21"
Height	19 $\frac{1}{2}$ " (above crankshaft L) 28 $\frac{1}{2}$ " (overall)
Weight	650 lbs.
<b>MODEL:</b>	<b>OMC 140 Cobra</b>
Horsepower	140
Cylinders	4
Cubic Inches	181
Compression Ratio	8.5:1
Max. Recommended RPM	4200-4600
Circuit Breaker	Fusible link
Fuel	Regular (93 oct. research)
Lower Unit Gear Ratio	1.61:1
Tilt	Power
Trim	Power
Length	33 $\frac{3}{4}$ "
Width	21"
Height	19 $\frac{1}{2}$ " (above crankshaft L) 28 $\frac{1}{2}$ " (overall)
Weight	650 lbs.
<b>MODEL:</b>	<b>OMC 175 Cobra w/Power Steering</b>
Horsepower	175
Cylinders	6
Cubic Inches	262
Compression Ratio	9.3:1
Max. Recommended RPM	4200-4600
Circuit Breaker	Fusible link
Fuel	Regular (89 oct. research)
Lower Unit Gear Ratio	1.68:1
Tilt	Power
Trim	Power
Length	31 $\frac{1}{2}$ "
Height	19 $\frac{1}{2}$ " (above crankshaft L) 28 $\frac{1}{2}$ " (overall)
Weight	825 lbs.



<b>MODEL:</b>	<b>OMC 260 Cobra w/ Power Steering</b>
Horsepower	260
Cylinders	8
Cubic Inches	350
Compression Ratio	9.0:1
Max. Recommended RPM	4200-4600
Circuit Breaker	In-line fuse
Fuel	Regular (94 oct. research)
Lower Unit Gear Ratio	1.50:1
Tilt	Power
Trim	Power
Length	36 1/4"
Width	29"
Height	19 7/8" (overall)
	28 7/16" (above crankshaft L)
Weight	950 lbs.

**BOAT MODEL: Z-16**

MPH	RPM	GPH	MPG
5	1400	.8	6.3
15	3300	2.7	5.6
25	3900	3.1	8.1
35	5400	7.7	4.5
(Full Throttle)			
37-39	5800	7.8	4.9
0-20 M.P.H. Acceleration: 3.5 Seconds			

**ENGINE 75 JOHNSON  
PROP 13 3/4" x 17"**

**BOAT MODEL: Z-16**

MPH	RPM	GPH	MPG
5	1000	1.3	3.8
15	2500	2.9	5.2
25	3400	4.2	6.0
35	4600	6.3	5.6
(Full Throttle)			
42-44	5400	8.2	5.2
0-20 M.P.H. Acceleration: 2.9 Seconds			

**ENGINE 90 EVINRUDE  
PROP 13 3/4" x 17"**

**BOAT MODEL: X-16**

MPH	RPM	GPH	MPG
5	1000	.7	7.1
15	2400	3.1	4.8
25	3100	3.8	6.6
35	4400	8.7	4.0
(Full Throttle)			
38-40	4600	—	—
0-20 M.P.H. Acceleration: 4.4 Seconds			

**ENGINE 120 O.M.C.\*  
PROP 13 3/4" x 15"**

\*Fixed trim

BOAT MODEL: X-16		ENGINE 140 O.M.C. Selectrim PROP 13" x 19"	
MPH	RPM	GPH	MPG
5	1000	.7	7.1
15	2200	3.6	4.2
25	2700	4.0	6.3
35	3800	7.3	4.8
(Full Throttle)			
43-45	4700	—	—
0-20 M.P.H. Acceleration: 3.7 Seconds			

BOAT MODEL: X-16		ENGINE 125 VOLVO* PROP 14" x 21" L	
MPH	RPM	GPH	MPG
5	1000	.8	6.3
15	2100	2.1	7.1
25	3100	3.7	6.8
35	4400	8.7	4.0
(Full Throttle)			
38-40	4800	—	—
0-20 M.P.H. Acceleration: 3.9 Seconds			

\*Fixed trim

BOAT MODEL: Z-17		ENGINE 115 EVINRUDE PROP 13" x 19"	
MPH	RPM	GPH	MPG
5	11.00	1.5	3.3
15	2800	3.5	4.3
25	4000	4.7	5.3
35	4800	7.5	4.7
(Full Throttle)			
42-44	5000	8.4	4.5
0-20 M.P.H. Acceleration: 3.3 Seconds			

BOAT MODEL: Z-17		ENGINE 140 SUZUKI PROP 12½" x 23"	
MPH	RPM	GPH	MPG
5	1600	1.4	3.6
15	2500	3.5	4.3
25	3200	5.0	5.0
35	4300	6.1	5.7
(Full Throttle)			
48-50	5700	11.2	4.4
0-20 M.P.H. Acceleration: 3.2 Seconds			

BOAT MODEL: X-17		ENGINE 125 VOLVO* PROP 14" x 21" L	
MPH	RPM	GPH	MPG
15	2600	2.4	6.3
25	3400	4.0	6.3
35	4300	8.7	4.0
(Full Throttle)			
38-40	4800	8.8	4.4
0-20 M.P.H. Acceleration: 3.2 Seconds			

\*Fixed trim

BOAT MODEL: X-17		ENGINE 120 MERCURISER PROP 14" x 19"	
MPH	RPM	GPH	MPG
15	2300	2.5	6.0
25	2900	4.0	6.3
35	3900	8.7	4.0
(Full Throttle)			
39-41	4300	—	—
0-20 M.P.H. Acceleration: 3.7 Seconds			



**BOAT MODEL: X-17****ENGINE 140 MERCURISER  
PROP 13 3/4" x 21"**

MPH	RPM	GPH	MPG
15	2300	2.7	5.6
25	3000	3.6	6.9
35	3700	7.6	4.6

(Full Throttle)  
43-46 4700 — —  
0-20 M.P.H. Acceleration: 3.2 Seconds

**BOAT MODEL: X-17****ENGINE 170 MERCURISER  
PROP 13 1/2" x 23"**

MPH	RPM	GPH	MPG
15	2100	3.5	4.3
25	2600	4.4	5.7
35	3400	7.5	4.7

(Full Throttle)  
48-50 4450 12.0 4.1  
0-20 M.P.H. Acceleration: 3.7 Seconds

**BOAT MODEL: X-17****ENGINE 120 O.M.C.\*  
PROP 13 3/4" x 15"**

MPH	RPM	GPH	MPG
15	2200	3.0	5.0
25	3100	3.9	6.4
35	4400	8.9	3.9

(Full Throttle)  
38-40 4600 — —  
0-20 M.P.H. Acceleration: 4.6 Seconds

\*Fixed trim

**BOAT MODEL: X-17****Selectrim ENGINE 140 O.M.C.  
PROP 13" x 19"**

MPH	RPM	GPH	MPG
15	2800	4.2	3.6
25	3300	4.9	5.1
35	3900	7.1	4.9

(Full Throttle)  
43-46 4500 — —  
0-20 M.P.H. Acceleration: 3.6 Seconds

**BOAT MODEL: X-17****ENGINE 170 O.M.C.  
PROP 14 1/4" x 21"**

MPH	RPM	GPH	MPG
15	2000	4.3	3.5
25	2500	4.9	5.1
35	3300	9.0	3.9

(Full Throttle)  
48-50 4500 13.6 3.6  
0-20 M.P.H. Acceleration: 3.7 Seconds

**BOAT MODEL: X-19****ENGINE 125 VOLVO  
PROP 14" x 21" L.H.\***

MPH	RPM	GPH	MPG
10	1900	2.4	6.3
20	3000	3.2	7.8
30	3900	5.2	6.7

(Full Throttle)  
39-41 4800 8.3 4.8  
0-20 M.P.H. Acceleration: 3.7 Seconds

\*Fixed trim

**BOAT MODEL: X-19****ENGINE 120 MERCURISER  
PROP 14" x 19"**

MPH	RPM	GPH	MPG
10	1800	2.4	4.2
20	2900	3.0	6.7
35	3800	9.0	3.9

(Full Throttle)  
39-41 4350 — —  
0-20 M.P.H. Acceleration: 3.8 Seconds

**BOAT MODEL: X-19****ENGINE 140 MERCURISER  
PROP 13 3/4" x 21"**

MPH	RPM	GPH	MPG
15	2300	2.8	5.6
25	3000	3.8	6.6
35	3800	7.8	4.5

(Full Throttle)  
45-47 4700 — —  
0-20 M.P.H. Acceleration: 3.2 Seconds

**BOAT MODEL: X-19**

**ENGINE 170 MERCURISER  
PROP 13½" x 23"**

MPH	RPM	GPH	MPG
15	2200	3.5	4.3
25	2700	4.5	5.6
35	3400	7.4	4.7
48-50	(Full Throttle) 4400	12.8	3.8

0-20 M.P.H. Acceleration: 3.6 Seconds

**BOAT MODEL: X-19**

**ENGINE 120 O.M.C.\*  
PROP 13¾" x 15"**

MPH	RPM	GPH	MPG
15	2400	3.1	4.8
25	3200	4.0	6.3
35	4400	8.8	4.0
38-40	(Full Throttle) 4600	—	—

0-20 M.P.H. Acceleration: 4.5 Seconds

\*Fixed trim

**BOAT MODEL: X-19**

**ENGINE 140 O.M.C.  
PROP 13" x 19"  
Selectrim**

MPH	RPM	GPH	MPG
15	2800	4.2	3.6
25	3300	4.9	5.1
35	3800	7.2	4.9
43-46	(Full Throttle) 4500	—	—

0-20 M.P.H. Acceleration: 3.4 Seconds

**BOAT MODEL: X-19**

**ENGINE 170 O.M.C.  
PROP 14¼" x 21"**

MPH	RPM	GPH	MPG
15	1900	4.2	3.6
25	2500	4.8	5.2
35	3200	9.0	3.9
48-50	(Full Throttle) 4350	13.5	3.6

0-20 M.P.H. Acceleration: 3.6 Seconds

**BOAT MODEL: CX-19**

**ENGINE 125 VOLVO\*  
PROP**

MPH	RPM	GPH	MPG
15	2700	3.2	4.7
25	3300	4.3	5.8
35	4400	7.9	4.4
39-41	(Full Throttle) 4900	8.1	4.9

0-20 M.P.H. Acceleration: 5.0 Seconds

\*Fixed trim

**BOAT MODEL: CX-19**

**ENGINE 120 MERCURISER  
PROP 14" x 19"**

MPH	RPM	GPH	MPG
15	2300	2.7	5.6
25	3000	3.6	6.9
35	4000	9.5	3.7
38-40	(Full Throttle) 4300	11.6	3.4

0-20 M.P.H. Acceleration: 5.3 Seconds

**BOAT MODEL: CX-19**

**ENGINE 140 MERCURISER  
PROP 13¾" x 21"**

MPH	RPM	GPH	MPG
15	2300	2.6	5.8
25	3000	3.6	6.9
35	4000	8.8	4.0
42-44	(Full Throttle) 4600	10.3	4.2

0-20 M.P.H. Acceleration: 4.5 Seconds



**BOAT MODEL: CX-19****ENGINE 170 MERCURISER  
PROP 13½" x 23"**

MPH	RPM	GPH	MPG
15	2200	3.7	4.1
25	2800	4.7	5.3
35	3600	8.3	4.2
(Full Throttle)			
47-49	4400	13.2	3.6
0-20 M.P.H. Acceleration: 4.5 Seconds			

**BOAT MODEL: CX-19****ENGINE 120 O.M.C.\*  
PROP 13¾" x 15"**

MPH	RPM	GPH	MPG
15	2600	3.3	4.5
25	3200	4.1	6.1
35	4500	8.8	4.0
(Full Throttle)			
36-38	4600	—	—
0-20 M.P.H. Acceleration: 5.6 Seconds			

\*Fixed trim

**BOAT MODEL: CX-19****ENGINE 140 O.M.C.  
Selectrim PROP 13" x 19"**

MPH	RPM	GPH	MPG
15	2900	4.3	3.5
25	3300	5.0	5.0
35	4000	7.2	4.9
(Full Throttle)			
42-44	4500	—	—
0-20 M.P.H. Acceleration: 4.6 Seconds			

**BOAT MODEL: CX-19****ENGINE 170 O.M.C.  
PROP 14¼" x 21"**

MPH	RPM	GPH	MPG
15	1800	4.0	3.8
25	2700	4.9	5.1
35	3200	8.9	3.9
(Full Throttle)			
47-49	4400	14.4	3.3
0-20 M.P.H. Acceleration: 4.6 Seconds			

**BOAT MODEL: SV-191****ENGINE 140  
MERCURISER  
PROP 13¾" x 21"**

MPH	RPM	GPH	MPG
5	1000	1.0	5.0
15	2600	2.9	5.2
25	3500	4.5	5.6
35	4600	10.7	3.3
(Full Throttle)			
36-38	4800	10.8	3.4
0-20 M.P.H. Acceleration: 4.1 Seconds			

**BOAT MODEL: SV-191****ENGINE 170  
MERCURISER  
PROP 13½" x 23"**

MPH	RPM	GPH	MPG
5	1000	1.5	3.3
15	2000	3.3	4.5
25	2400	4.0	6.3
35	3400	7.6	4.6
(Full Throttle)			
46-48	4400	15.0	3.0
0-20 M.P.H. Acceleration: 3.8 Seconds			

**BOAT MODEL: SV-191****ENGINE 190  
MERCURISER  
PROP 13¾" x 21"**

MPH	RPM	GPH	MPG
5	1000	1.0	5.0
15	2100	3.4	4.4
25	2700	4.6	5.4
35	3400	7.0	5.0
(Full Throttle)			
49-51	4800	16.7	3.0
0-20 M.P.H. Acceleration: 3.6 Seconds			

**BOAT MODEL: SV-191**

**ENGINE 200  
MERCUISER  
PROP 14" x 19"**

MPH	RPM	GPH	MPG
5	900	1.1	4.5
15	1800	4.0	3.8
25	2700	4.7	5.3
35	3200	6.7	5.2
(Full Throttle)			
44-46	4200	18.8	2.4
0-20 M.P.H. Acceleration: 3.7 Seconds			

**BOAT MODEL: SV-191**

**ENGINE 230  
MERCUISER  
PROP 13½" x 23"**

MPH	RPM	GPH	MPG
5	900	1.0	5.0
15	1800	4.0	3.8
25	2500	4.8	5.2
35	2900	6.8	5.1
(Full Throttle)			
48-51	4500	17.0	3.4
0-20 M.P.H. Acceleration: 3.0 Seconds			

**BOAT MODEL: SV-191**

**ENGINE 260  
MERCUISER  
PROP 13½" x 23"**

MPH	RPM	GPH	MPG
5	800	1.7	2.9
15	1800	4.0	3.8
25	2100	4.4	5.7
35	3000	8.1	4.3
(Full Throttle)			
51-54	4600	21.4	2.5
0-20 M.P.H. Acceleration: 3.0 Seconds			

**BOAT MODEL: SV-191**

**ENGINE 140 O.M.C.  
PROP 13" x 19"**

MPH	RPM	GPH	MPG
5	1000	.8	6.3
15	2800	4.2	3.6
25	3200	4.7	5.3
35	4000	7.2	4.9
36-39	4400	10.2	3.8
(Full Throttle)			
0-20 M.P.H. Acceleration: 4.1 Seconds			

**BOAT MODEL: SV-191**

**ENGINE 170 O.M.C.  
PROP 14¼" x 21"**

MPH	RPM	GPH	MPG
5	900	1.2	4.2
15	2100	4.2	3.6
25	2800	4.7	5.3
35	3600	9.1	3.8
(Full Throttle)			
44-47	4700	14.0	3.3
0-20 M.P.H. Acceleration: 3.8 Seconds			

**BOAT MODEL: SV-191**

**ENGINE 260 O.M.C.  
PROP 14¼" x 21"**

MPH	RPM	GPH	MPG
5	800	1.6	3.1
15	1800	4.1	3.7
25	2200	4.5	5.6
35	3000	8.1	4.2
(Full Throttle)			
54-57	4400	22.0	2.6
0-20 M.P.H. Acceleration: 3.0 Seconds			



**BOAT MODEL: CVX-16**

MPH  
5  
15  
25  
35

RPM  
1000  
2400  
3800  
4500  
4900

(Full Throttle)

41-43

0-20 M.P.H. Acceleration: 3.2 Seconds

**ENGINE 90 MERCURY  
PROP 12 3/4" x 21"**

GPH  
1.1  
3.5  
4.5  
7.1

MPG  
4.5  
4.3  
5.6  
4.9

8.2

5.1

**BOAT MODEL: CVX-16**

MPH  
5  
15  
25  
35

RPM  
1000  
2400  
3200  
4400  
5000

(Full Throttle)

47-49

0-20 M.P.H. Acceleration: 3.0 Seconds

**ENGINE 115 EVINRUDE  
PROP 12 3/4" x 21"**

GPH  
1.3  
3.4  
4.5  
7.0

MPG  
3.8  
4.4  
5.6  
5.0

8.4

5.7

**BOAT MODEL: CVX-17**

MPH  
5  
15  
25  
35

RPM  
1100  
2400  
3900  
4700  
4900

(Full Throttle)

40-43

0-20 M.P.H. Acceleration: 3.4 Seconds

**ENGINE 115 EVINRUDE  
PROP 12 3/4" x 21"**

GPH  
1.2  
3.6  
4.5  
7.2

MPG  
4.2  
4.2  
5.6  
4.9

8.37

4.9

**BOAT MODEL: CVX-17**

MPH  
5  
15  
25  
35

RPM  
1200  
2300  
2900  
3500  
5100

(Full Throttle)

50-53

0-20 M.P.H. Acceleration: 3.2 Seconds

**ENGINE 140 SUZUKI  
PROP 12 1/2" x 23"**

GPH  
1.3  
3.8  
4.6  
6.0

MPG  
3.8  
3.9  
5.4  
5.8

9.2

5.5

**BOAT MODEL: SPRINT**

MPH  
5  
15  
25  
35

RPM  
1000  
2600  
3100  
4100  
5200

(Full Throttle)

55-57

0-20 M.P.H. Acceleration: 3.1 Seconds

GPH  
2.7  
5.6  
6.6  
9.3

MPG  
1.9  
2.7  
3.8  
3.8

17.8

3.1

**ENGINE 175 JOHNSON  
PROP 14 1/4" x 21"**

**BOAT MODEL: SPRINT**

MPH  
5  
15  
25  
35

RPM  
900  
1900  
2700  
3500  
5600

(Full Throttle)

57-60

0-20 M.P.H. Acceleration: 3.0 Seconds

GPH  
2.8  
5.8  
6.9  
10.0

MPG  
1.8  
2.6  
3.6  
3.5

18.6

3.2

**ENGINE 200 JOHNSON  
PROP 14" x 23"**

**BOAT MODEL: INTIMIDATOR**

MPH  
5  
15  
25  
35

RPM  
1000  
1800  
2400  
3100  
4600

(Full Throttle)

56-59

0-20 M.P.H. Acceleration: 2.9 Seconds  
\*Stainless Steel (Cleaver)

GPH  
1.8  
4.2  
4.7  
8.2

MPG  
2.8  
3.6  
5.3  
4.3

21.6

2.7

**ENGINE 260  
MERCURISER  
PROP 14 1/2" x 23"**

**BOAT MODEL: INTIMIDATOR**      **ENGINE 260 O.M.C.**  
 Selectrim      PROP 14 1/4" x 21"

MPH	RPM	GPH	MPG
5	900	1.7	2.9
15	1700	4.1	3.7
25	2400	4.6	5.4
35	3100	8.2	4.3
(Full Throttle)			
55-58	4400	21.7	2.7

0-20 M.P.H. Acceleration: 3.0 Seconds  
 \*Stainless Steel

**BOAT MODEL: CV-23**      **ENGINE 260 MERCURISER**  
 PROP 13 3/4" x 21"

MPH	RPM	GPH	MPG
5	1200	1.9	2.6
15	2000	4.3	3.5
25	2600	4.9	5.1
35	3300	8.3	4.2
(Full Throttle)			
53-56	4600	21.7	2.5

0-20 M.P.H. Acceleration: 3.6 Seconds  
 \*Stainless Steel

**BOAT MODEL: CV-23**      **ENGINE 260 O.M.C.**  
 Selectrim      PROP 14 1/4" x 19"

MPH	RPM	GPH	MPG
5	1100	1.8	2.8
15	2000	4.3	3.5
25	2600	5.0	5.0
35	3400	8.5	4.1
(Full Throttle)			
52-55	4400	22.0	2.5

0-20 M.P.H. Acceleration: 3.7 Seconds  
 \*Stainless Steel

**BOAT MODEL: HPV-165**      **ENGINE 75 JOHNSON**  
 PROP 13 1/4" x 17"

MPH	RPM	GPH	MPG
5	1400	.6	8.3
15	3300	2.6	5.8
25	3900	3.0	8.3
35	5300	7.8	4.5
(Full Throttle)			
36-38	5600	8.1	4.6

0-20 M.P.H. Acceleration: 3.6 Seconds

**BOAT MODEL: HPV-165**      **ENGINE 90 MERCURY**  
 PROP 12 3/4" x 21"

MPH	RPM	GPH	MPG
5	1000	1.2	4.2
15	2300	3.4	4.4
25	3700	4.4	5.7
35	4600	7.0	5.0
(Full Throttle)			
41-43	4800	8.2	5.0

0-20 M.P.H. Acceleration: 3.2 Seconds

**BOAT MODEL: HPV-165**      **ENGINE 115 EVINRUDE**  
 PROP 12 3/4" x 21"

MPH	RPM	GPH	MPG
5	1000	1.3	3.8
15	2300	3.3	4.5
25	3200	4.4	5.7
35	4400	7.0	5.0
(Full Throttle)			
47-49	5000	8.8	5.4

0-20 M.P.H. Acceleration: 3.0 Seconds



**BOAT MODEL: HPV-175****ENGINE 140 EVINRUDE  
PROP 13 1/4" x 17"**

MPH	RPM	GPH	MPG
5	1000	1.5	3.3
15	2100	3.5	4.3
25	3300	4.4	5.7
35	4000	6.9	5.1
(Full Throttle)			
45-48	5300	11.2	4.1

0-20 M.P.H. Acceleration: 3.4 Seconds

**BOAT MODEL: HPV-175****ENGINE 175 JOHNSON  
PROP 14 1/4" x 21"**

MPH	RPM	GPH	MPG
5	1000	2.6	1.9
15	2400	5.6	2.7
25	3000	6.7	3.7
35	3900	9.2	3.8
(Full Throttle)			
56-59	5200	17.7	3.3

0-20 M.P.H. Acceleration: 2.9 Seconds

**BOAT MODEL: SSV-178****ENGINE 115 EVINRUDE  
PROP 13" x 19"**

MPH	RPM	GPH	MPG
5	1100	1.5	3.3
15	2800	3.5	4.3
25	4000	4.7	5.3
35	4800	7.5	4.7
(Full Throttle)			
42-44	5000	8.4	4.5

0-20 M.P.H. Acceleration: 3.3 Seconds

**BOAT MODEL: SSV-178****ENGINE 140 SUZUKI  
PROP 12 1/2" x 23"**

MPH	RPM	GPH	MPG
5	1600	1.4	3.6
15	2500	3.5	4.3
25	3200	5.0	5.0
35	4300	6.1	5.7
(Full Throttle)			
48-50	5700	11.2	4.4

0-20 M.P.H. Acceleration: 3.2 Seconds

**BOAT MODEL: V-216****ENGINE 150 EVINRUDE  
PROP 15 1/2" x 15"**

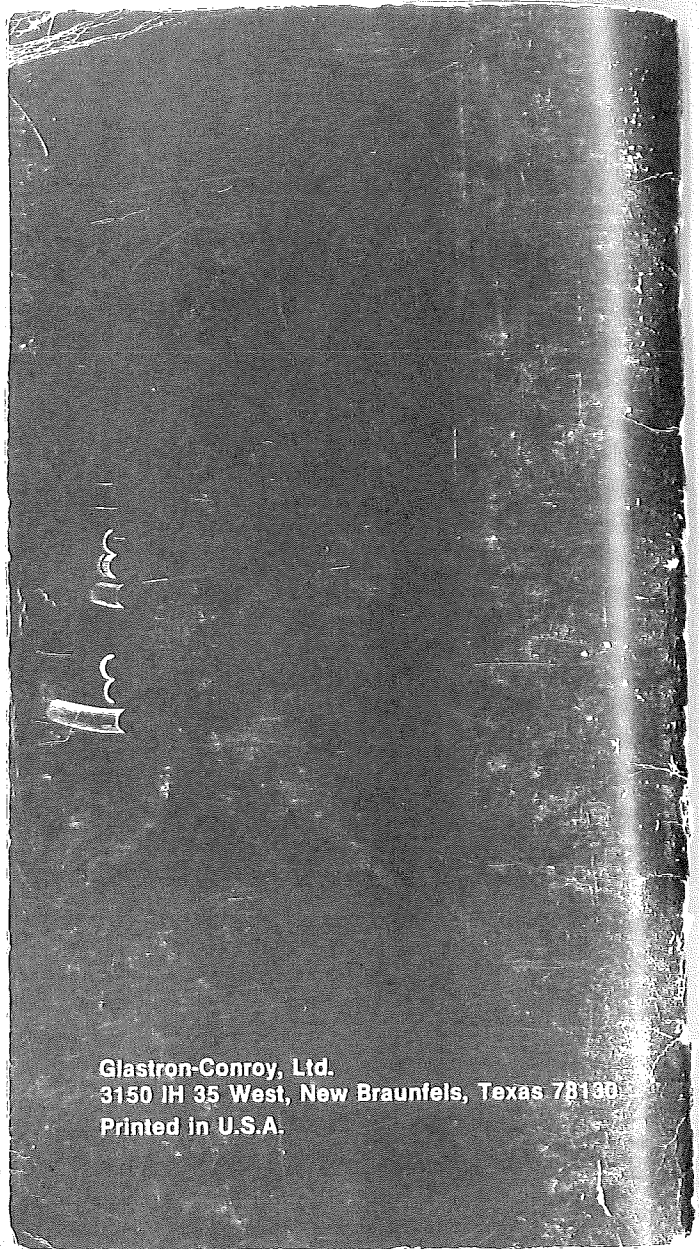
MPH	RPM	GPH	MPG
5	1000	1.4	3.6
15	3200	7.6	2.0
25	4000	9.6	2.6
(Full Throttle)			
30-33	5200	14.0	2.4

0-20 M.P.H. Acceleration: 4.8 Seconds

**BOAT MODEL: HPV-216****ENGINE 200 JOHNSON  
PROP 14 1/2" x 19"**

MPH	RPM	GPH	MPG
5	1000	2.0	2.5
15	2900	3.1	4.8
25	3500	9.2	2.7
35	4600	15.3	2.3
(Full Throttle)			
40-43	5500	24.6	1.7

0-20 M.P.H. Acceleration: 4.1 Seconds



Glastron-Conroy, Ltd.  
3150 IH 35 West, New Braunfels, Texas 78130  
Printed in U.S.A.