

Glastron[®]

BOATS



1981

**Salesman's
Handbook**

Phil Hurley

**GLASTRON AND GLASTRON/CARLSON BOATS
1981 LIMITED WARRANTY**

Glastron Boat Company (Glastron) warrants each new Glastron and Glastron/Carlson boat to the original purchaser only to be free from defects in material and workmanship under normal use or service for one (1) year from date of retail purchase from an authorized Glastron Dealer according to the following terms:

Any part of the boat manufactured by Glastron and found in the judgment of Glastron to be defective in material or workmanship will be repaired or replaced at Glastron's option by an authorized Glastron dealer. If Glastron deems it proper to replace an entire boat, the term of warranty will extend only one (1) year from date of purchase of the original boat.

The boat including any defective part must be returned to an authorized Glastron dealer within the warranty period. The expense of transporting the boat to the dealer and of returning the boat back to the owner will be paid for by the owner. Proof of purchase will be required by the authorized Glastron dealer to substantiate warranty claim. In addition, all warranty work must be performed by an authorized Glastron dealer.

In recent years, fiberglass boat manufacturers have been plagued with bubble bottom problems. Although this is not a warrantable item, Glastron, in the interest of maintaining customer pride and satisfaction in our quality product, will participate in correcting this problem should it occur within the first year of retail ownership.

WARRANTY DOES NOT COVER:

This warranty does not cover any boat that has been subject to misuse, neglect, negligence, or accident, or operated for racing purposes or operated in any way contrary to the operating or maintenance instructions as specified in the Glastron Owner's - Operator's Manual. The warranty does not cover any boat that has been altered or modified so as to

adversely affect the boat's operation, performance or durability, or that has been altered or modified so as to change the intended use of the boat. In addition, the warranty does not extend to repairs made necessary by normal wear, or by the use of parts or accessories which in the reasonable judgment of Glastron are either incompatible with the boat or adversely affect its operation, performance or durability. This warranty does not cover: (1) engines, outdrives, controls, batteries or other equipment or accessories carrying their own individual warranties (appropriate adjustments to them provided by their respective manufacturers); (2) Machinery, equipment and accessories not factory installed; (3) windshield breakage; (4) non-structural cosmetic defects in the gelcoat such as crazes (hairline cracks); (5) fading and discoloration from ultra violet light; (6) any Glastron boat which has been overpowered or overloaded (in excess of horse power and/or capacity as specified on capacity plate on each Glastron boat); (7) any Glastron used for commercial purposes. Upon request, Glastron may provide special written warranty for specific commercial applications.

Glastron boats contain flotation material; however, there is no boat that is unsinkable. Therefore, personal flotation devices should be carried for each passenger in accordance with U.S. Coast Guard requirements.

**NO OTHER WARRANTIES MADE:
Liability Disclaimer**

Repairs or replacements qualifying under this warranty will be performed by an authorized Glastron dealer following delivery of the boat to the dealer's place of business. Glastron's responsibility in respect to claims is limited to making the required repairs or replacements, and no claim of breach of warranty shall be cause for cancellation or rescission of the contract of sale of any boat.

Glastron assumes no responsibility for loss of use of the boat, loss of time, inconvenience, or other damage, consequential or otherwise, including, but not limited to, expense for gasoline, expense of

returning the boat to the dealer and expense of returning the boat back to the owner, removal of the motor from a boat and the reinstallation, mechanic's time, in-and-out-of-water charges, telephone or telegram charges, trailering or towing charges, rental of another boat during the time warranty repairs are being performed, travel, lodging, loss or damage to personal property, or loss of revenue.

Glastron reserves the right to change or improve the design of any boat without assuming any obligation to modify any boat previously manufactured.

All implied warranties are limited in duration to the one (1) year warranty period. Accordingly, any such implied warranties including merchantability, fitness for a particular purpose, or otherwise, are disclaimed in their entirety after the expiration of the one (1) year warranty period. Glastron's obligation under this warranty is strictly and exclusively limited to the repair or replacement of defective parts, and Glastron does not assume or authorize anyone to assume for them any other obligation.

Some states do not allow limitations on how long an implied warranty lasts and some states do not allow the exclusion or limitation of incidental or consequential damages, so the above limitations and exclusions may not apply to you.

This warranty gives you specific legal rights, and you may also have other rights which vary from state to state.

This warranty applies only to boats sold in the United States and Canada.

In keeping with Glastron's policy of continuous improvement of all products, we reserve the right to change specifications and prices without notice.

GLASTRON CUSTOM TRAILERS LIMITED WARRANTY

Conroy Industries warrants each new Glastron Custom Trailer to the original purchaser only to be free from defects in material and workmanship under normal use or service for one (1) year from date of retail purchase from an authorized Glastron Trailer dealer according to the following terms:

Any part of the trailer manufactured by Conroy Industries to be defective in material or workmanship will be repaired or replaced at Conroy Industries' option by an authorized Glastron Trailer dealer.

The trailer, including any defective part, must be returned to an authorized Glastron Trailer dealer within the warranty period. The expense of transporting the trailer to the dealer and of returning the trailer to the owner will be paid for by the owner. Proof of purchase by owner will be required by the authorized Glastron Trailer dealer to substantiate any warranty claim. In addition, all warranty work must be performed by an authorized Glastron Trailer dealer.

If Conroy Industries deems it proper to replace an entire trailer, the term of warranty will extend only one (1) year from date of purchase of the original trailer.

WARRANTY DOES NOT COVER:

This warranty does not cover any Glastron Custom Trailer that has been subject to misuse, neglect, negligence, or accident, or operated in any way contrary to the operating or maintenance instructions as specified in the Conroy Industries Owner's - Operator's Manual. The warranty does not cover any trailer that has been altered or modified so as to adversely affect the trailer's operation, performance, or durability, or that has been altered or modified so as to change the intended use of the trailer. In addition, the warranty does not extend to repairs made necessary by normal wear, or by the use of parts or accessories which in

the judgment of Conroy Industries are either incompatible with the trailer or adversely affect its operation, performance or durability.

IN ADDITION:

This warranty does not cover: (1) any boats transported or stored on Glastron Custom trailers; (2) other equipment or accessories carrying their own individual warranties (appropriate adjustments to them provided by their respective manufacturers); (3) machinery, equipment and accessories not factory installed; (4) Glastron Custom Trailers used for commercial purposes; (5) road gravel damage to paint; (6) fading of carpet or paint due to normal wear or weathering; (7) any Glastron Custom Trailer which has been overloaded in excess of the capacity stated on the identification plate and in the Conroy Industries Owner's-Operator's Manual.

**NO OTHER WARRANTIES MADE:
LIABILITY DISCLAIMER**

Repairs or replacements qualifying under this warranty will be performed by an authorized Glastron Trailer dealer following delivery of the trailer to the dealer's place of business. Conroy Industries' responsibility in respect to claims is limited to making the required repairs or replacement, and no claim of breach of warranty shall be cause for cancellation or rescission of the contract of sale of any trailer.

Glastron assumes no responsibility for loss of use of the trailer, loss of time, inconvenience, or other damage, consequential or otherwise, including, but not limited to, expense for gasoline, expense of transporting the trailer to the dealer and expense of returning the trailer to the owner, removal of boats from the Custom Trailer for any purpose, mechanic's travel time, telephone and telegram charges, road service or towing charges, rental of another trailer during the time warranty repairs are being performed, travel, lodging, loss or damage to personal property, or loss of revenue or earnings.

Conroy Industries reserves the right to change or improve the design of any Glastron Custom Trailer without assuming any obligation to modify any trailer previously manufactured.

All implied warranties are limited in duration to the one (1) year warranty period. Accordingly, any such implied warranties including merchantability, fitness for a particular purpose, or otherwise, are disclaimed in their entirety after the expiration of the one (1) year warranty period. Conroy Industries' obligation under this warranty is strictly and exclusively limited to the repair or replacement of defective parts, and Conroy Industries does not assume or authorize anyone to assume for them any other obligation.

Some states do not allow limitations on how long an implied warranty lasts and some states do not allow the exclusion or limitation of incidental or consequential damages, so the above limitations and exclusions may not apply to you.

This warranty applies only to Glastron Custom Trailers sold in the United States and Canada.

In keeping with Conroy Industries' policy of continuous improvement of all products, we reserve the right to change specifications and prices without notice.

1981 GLASTRON AND CARLSON BOAT LINE

When Glastron builds a boat, it stays built. This certainly isn't the easiest or cheapest approach to boat construction, but is one which Glastron feels creates satisfied customers year after year.

Glastron has created this dealer handbook which will provide you, the dealer, with information pertinent to each boat in the Glastron and Carlson model line. Its size is such that it can be carried with you on the showroom floor and referred to should specific questions come up pertaining to specifications, features or safety standards.

While each Glastron boat may be constructed in a different manner to suit its design, use and capability, there are many items which remain standard throughout the Glastron line.

HAND LAY-UP CONSTRUCTION

Hand lay-up construction is the primary method of manufacture in all Glastron and Glastron/Carlson boats. In the hand lay-up method, three basic raw materials, fiberglass mat, fiberglass roving and resin are used in the basic lay-up of most hulls and decks. In strength and construction the hand lay-up method can be favorably compared to plywood lamination. Plywood obtains its strength and resilience through its continuous layers, one bonded to the other. The same principle applies in the hand lay-up method of building a fiberglass boat.

It should be noted that certain parts, due to their complex design, lend themselves to the chopper method of construction to prevent excessive overlaps and heat shrinkage marks. At the present time, Glastron is using this technique on certain small parts and in certain complex liner/deck model boats.

Each Glastron boat receives a different hull lay-up, depending upon its size and horsepower requirements. These lay-ups may range from two layers of 1½ oz. mat and one layer of 24 oz. roving in small boats up to four 1½ oz. mats and two 24 oz. rovings in larger models.

An explanation of the weight of fiberglass materials is as follows:

1½ oz. mat weighs 1½ oz. per square foot
24 oz. of woven roving weighs 24 oz. per sq. foot

In each Glastron model, the keel areas of fiberglass are overlapped, thereby providing a double thickness in these areas of impact.

GLASTRON STRINGER SYSTEM

While Glastron provides foam flotation in each of its boats, up to 24', we do not feel that foam should be used as a structural support in the hull. Therefore, most Glastrons manufactured contain a rigid stringer system to support the hull and maintain its uniform shape. These stringers are encapsulated in fiberglass and bonded to the hull to assure a rigid single structure. The floor is then fastened in place to the stringer system. In Glastron's new series of salt water fishing boats, a unique fiberglass liner system will be utilized which will be independent of the structural system to eliminate stress and crazing.

FUEL SYSTEMS

All Glastron fuel systems comply with current Boating Industry Association specifications. All Glastron fuel tanks are pressure checked to eliminate the possibility of pinhole leaks and checked again when the fuel lines are attached to assure that there are no leaks around the fittings. Glastron uses copper lines and flared fittings in its fuel system (some systems use a hose instead of tubing). In addition, each permanent fuel tank installed includes anti-siphon protection to eliminate the possibility of unwanted fuel spillage.

SEAT AND SEAT VINYL

Glastron manufactures almost all its own seats for installation in Glastron Boats. Wood used in Glastron seats, as well as all exposed wood in the boats, is dipped in wood preservative in order to provide maximum protection against the possibility of delamination and dry rot. All plywood is bonded with waterproof exterior grade glue. Joints are glued and T-nuts are used extensively. Glastron vinyls used in

seats and other areas of the boats are the highest standard in the industry. These are 32 oz. marine grade vinyls which have been checked in Glastron's own weatherometer to determine their durability under ultraviolet light and weathering. All Glastron seats, except for certain fishing boat and sport seat models, are back-to-back sleeper seats which may be extended for the convenience of the owner.

GLASTRON GELCOATS

Glastron gelcoats are one of the added features in creating long lasting value. A new formula gelcoat was developed jointly by Glastron and its resin and pigment suppliers. This gelcoat is applied at an average thickness of 20 ml. - 22 ml. (wet), 16 ml. - 18 ml. (dry) to create a bright, durable finish. Tests in Glastron's weatherometer indicate that the new finish has a much improved resistance to fading, chalking, crazing and blistering.

FOAM FLOTATION

All boats manufactured by Glastron comply with the U.S. Coast Guard regulations and B.I.A. standards for flotation. All 1981 Glastrons under 20 feet have level flotation. The 20 foot to 23 foot models have basic flotation. Glastron boats over 23 feet do not have flotation.

B.I.A. CERTIFICATION

All boats manufactured by Glastron are certified by the Boating Industry Association as having met current established standards in the areas of fuel and electrical systems, compartment ventilation, steering, lighting, load capacities, flotation and horsepower limitations (O/B only). All Glastron boats are manufactured in compliance with U.S. Coast Guard Federal Regulations.

Many questions have arisen concerning B.I.A. certification of horsepower for outboards. The U.S. Coast Guard and many states now use this certification as a standard for horsepower limitation on all manufacturers' boats. This horsepower certification is arrived at in the following manner for Glastron boats. NOTE: Different methods may be used for smaller boats having no remote steering or different hull forms.

- (1) Multiply the length of the boat in feet and tenths of feet times the maximum transom width in feet and tenths of feet.
- (2) Round off the previous answer down to the nearest whole number and multiply by two.
- (3) Subtract 90.
- (4) If the number is not a multiple of five, raise it to the next multiple of five.

EXAMPLE:

Glastron SSV-176 - h.p. calculation

Length	17.10
Transom Width	<u>x 6.62</u>
	113.20

Round off to 113

Multiply by 2 $113 \times 2 = 226$

Subtract 90 $226 - 90 = 136$

Round off to next higher multiple
of 5 = 140 h.p.

This will provide you with the maximum B.I.A. certified and U.S.C.G. horsepower rating which can be established for a specific model of boat.

Glastron does not recommend overpowering. To do so will result in voiding the warranty.

GLASTRON STANDARD EQUIPMENT

Glastron boats feature many items as standard equipment which serve to increase the customer's appreciation and enjoyment of his boat.

- (1) Hand lay-up of hull construction for superior performance and high impact strength.
- (2) Factory installed vinyl softops on most models.
- (3) Ski eyes on all Glastron outboards and Stern-drives.
- (4) Deluxe sport steering wheel in all outboards.
- (5) Lockable glove compartments in most models.
- (6) Exclusive Glastron steering wheel in most stern-drives and stainless steel in all cruisers.
- (7) Foam flotation in boats under 24'.
- (8) Certification for fuel and electrical systems, compartment ventilation, steering, lighting, load capacities, flotation, and horsepower limitations (O/B only).
- (9) Mechanical steering.
- (10) Cleats.
- (11) All stern-drives have bilge pumps and bilge blowers.
- (12) All stern-drives feature the Glastron "Command Console" instrumentation panel.
- (13) Speedometers and electric horns on all stern-drives.
- (14) Most Glastron windshields, except for wrap-around style, are tempered glass for durability and ease of cleaning — except walk-thru vents and side vents.

GLASTRON ENGINE WEIGHT CHART

All Glastron stern-drives have been shown without engine weight. To arrive at the total boat weight with engine installed, refer to boat weight on individual model specification page and add applicable engine weight.

Keep in mind when arriving at trailer capacity that this weight does not take into consideration additional weight loads for fuel, gear, anchors, battery, etc., which the trailer will have to support.

<u>Engine Model</u>	<u>Weight (lbs.)</u>
Merc 120	600
Merc 140	625
Merc 470	750
Merc 485	750
Merc 228 *	975
Merc 260 *	975
OMC 120	650
OMC 140	675
OMC V6	710
OMC 260 *	950
Twin Merc 470 *	1550

* Power Steering Included

Weights may vary 25 pounds

APPROXIMATE SPEED

Approximate speed ranges are based on actual speed checks on a ¼ mile course. Boats are tested with various props and under varying weight/load conditions to determine the recommended prop for optimum operating performance. Keep in mind that optimum performance provides the best performance through all r.p.m. ranges and does not necessarily provide the highest peak speed performance.

PROP RECOMMENDATIONS

Glastron has recommended the prop which, in our opinion, provides the best all-around performance for the stern-drive engine-boat combination. Please keep in mind that altitude, load conditions, temperature, humidity, tuning, etc., can all affect a given boat's performance. Therefore, performance may vary dependent upon conditions.

DEFINITIONS OF BOAT MEASUREMENTS

Length Overall (L.O.A.) — Distance along the centerline from the tip of the bow to the aft-most part of the hull.

Gunwale Length — Distance along the bumper strip from the corner of the transom to the tip of the boat.

Maximum Beam — Maximum width of the boat.

Transom Width — Maximum width of transom.

Maximum Depth — Vertical distance from lowest point of the keel to highest point of boat, excluding windshields, lights and other removable components.

Transom — Vertical distance at boat's centerline from the keel/transom intersection to the transom top.

GLASTRON CUSTOM TRAILERS

Custom-Designed Aluminum Construction

Glastron custom-designed trailers are built of aluminum. Aluminum, because steel has built-in rust and corrosion problems.

Each trailer is constructed around a 4½ to 5½-inch main rail for great strength and durability. Most steel trailers start with a 4-inch main rail. Each Glastron trailer makes extensive use of aircraft-type riveted construction methods, both for strength and good looks. Riveted construction does away with ugly weld marks and resulting loss of strength commonly associated with steel trailers.

Because they're aluminum, Glastron trailer frames can be extruded to include an integral channel or raceway through which all trailer wiring and brake lines pass. The wiring harness and brake lines are permanently protected within the frame of the trailer. Wiring won't short out or break. It is fully immersable, time after time, even in salt water. And there are no metal clips to rust, no hanging wires to spoil the appearance or get in the way.

Aluminum, aircraft-type construction, is more than just good-looking. It is lightweight, durable and built to last in salt water or fresh.

COLOR-COORDINATED AUTOMOTIVE-TYPE PAINT

Each Glastron trailer is color-coordinated to the boat for which it was built. But that doesn't mean we just slapped a coat of trailer paint on it. Not by a long shot.

Before painting, every completely-assembled trailer frame is cleaned and then dipped in a chrome-conversion coating to provide the perfect base for paint. Then we use special automotive-type, acrylic-enamel paint to achieve the perfect color. And we don't just air dry that paint, we bake it on to insure a hard, glossy surface.

Since, with our chrome-conversion process, paint adheres to aluminum just about forever, a ding won't chip or peel like it will on a steel trailer. And your rig won't take on that battle-scarred, rusty look just about the time you've got it broken in.

ENGINEERED CARPETED BUNK SUPPORTS

Bunk supports, the part of the trailer that actually supports your boat, look like an afterthought on most trailers. But since a Glastron trailer is custom-designed for a specific boat model, they can be perfectly positioned to cushion that hull. They support the boat at all the right places — help prevent warping and pressure dents. And you won't believe the way properly-designed bunks take the bump and grind out of loading and launching your boat.

EXCLUSIVE WATERPROOF LIGHTING SYSTEM

You know that all Glastron trailer wiring is protected within the raceway against damage. Well, the lighting that wiring goes to is designed to be just as tough. All light lenses are sealed by a special ultrasonic process to make them waterproof. So they're completely safe, even under water. The same process is used with the sockets. You never have to disconnect, even when you immerse your trailer. And rugged polycarbonate lenses will stand up to whatever punishment the road dishes out.

ADDITIONAL FEATURES

Additional standard features, all designed to make the Glastron Custom Trailer the ultimate for a discriminating boater, include:

- (1) A built-in Bearing Buddy system to provide constant lubrication for moisture protection;
- (2) A dropped 5½-inch axle for a stable lower center of gravity, wide stance appearance and easier shallow water launching;
- (3) Custom-designed bow stop to insure proper fit and easy centering;
- (4) A custom-designed hitch assembly, Class 2, 3, and 4, for easy latching and low maintenance. All receive a 2-inch ball hitch, and safety chains and "S" hooks are standard;
- (5) Color-coordinated carpeted walkways are provided in front and back of the trailer fenders;

- (6) Large, automotive white sidewall tires (H 78 x 14) for safety and easier and more stable towing;
- (7) Aluminum hugger fenders with carpeted padding act as side guides and protect the boat hull during launching, loading and towing;
- (8) Large 12-inch rubber keel rollers with nylon bushings are tapered to give better boat alignment during loading.

GX-150



GX-150

New open-bow sportabout for skiing and fun running; this 15-footer delivers. It's low-profile look and light weight offer the complete package for the young-at-heart.

PACKAGE PRICE _____	LIST
Boat	_____
Motor _____ H.P.	_____
Trailer	_____
Accessories	_____
Total List	_____
Sale Price	_____

SPECIFICATIONS:

LOA	15' 5" - 4.70 m
Beam	77½" - 1.97 m
Motor shaft length	20" - 50.8 cm
Transom width	74¼" - 1.89 m
Fuel capacity	N/A
Depth	34" - .86 m
Approximate weight	650 lbs. - 294 kg
Maximum load	1200 lbs. - 544kg
H.P. Rating	90 h.p.
Steering	Mechanical
Glastron trailer	GA-15
Colors	Metaflake Aztec Gold

STANDARD FEATURES:

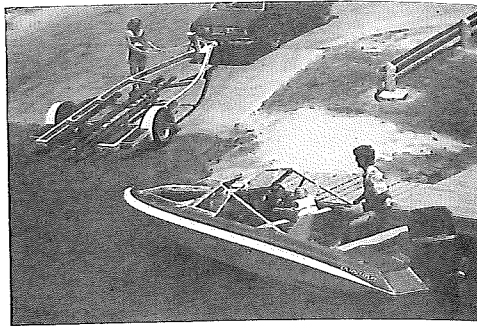
- Hand-laid fiberglass construction
- Bench and bow seating
- Ice chest in aft deck
- Two bow seats
- Smoked plexiglass windscreen
- In-floor ski storage
- Plush carpet
- Deluxe sport wheel
- Chrome-plated hardware
- Fuel tank compartment behind driver bench
- B.I.A. certified
- Level flotation
- Running lights with removable stern light
- Stainless steel bow eye and ski eyes
- Bow storage compartment

OPTIONS:

- Cockpit cover

PERFORMANCE:

- Optimum Performance Range 50 - 90 h.p.



SSV[®] - 151 *

A new lightweight, full-featured model that lets a small boat handle a big family. The Glastron starter boat that does it all.

* Design Patent Pending

PACKAGE PRICE _____	LIST
Boat	_____
Motor _____ H.P.	_____
Trailer	_____
Accessories	_____
Total List	_____
Sale Price	_____

SPECIFICATIONS:

LOA	15' 5" - 4.7 m
Beam	77½" - 1.97 m
Motor shaft length	20" - 50.8 cm
Transom width	74¾" - 1.89 m
Fuel capacity	N/A
Depth	30" - .76 m
Approximate weight	700 lbs. - 317 kg
Maximum load	1200 lbs. - 544 kg
H.P. Rating	90 h.p.
Steering	Mechanical
Glastron trailer	GA-15
Colors	Metalflake Rust and Tan

STANDARD FEATURES:

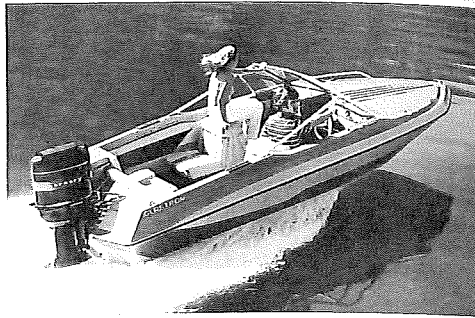
Hand-laid fiberglass construction
 Bench and bucket seats
 Two cushioned bow seats
 Walk-through tempered glass windshield
 Plush carpet
 Side panel storage
 Chrome-plated hardware
 Deluxe sport wheel
 Running light with removable stern light
 Stainless steel bow eye and ski eyes
 Fuel tank compartment behind bench seat
 In-floor ski storage
 Level flotation
 B.I.A. certified
 Easy-up soft top with boot cover
 Ice chest in floor

OPTIONS:

Side and aft curtains
 Tonneau cover
 Mooring cover

PERFORMANCE:

Optimum Performance Range 50 - 90 h.p.



SSV® - 163*

The smartly styled SSV-163 leads the way. Out-board power, quick-planing hull and closed-bow wind and weather protection.

*Design patent pending

PACKAGE PRICE _____	LIST
Boat _____	_____
Motor _____ H.P.	_____
Trailer _____	_____
Accessories _____	_____
Total List _____	_____
Sale Price _____	_____

SSV-163

SPECIFICATIONS:

LOA	16' 2 1/4" - 4.9 m
Beam	79 1/2" - 2.0 m
Motor shaft length	20" - 50.8 cm
Transom width	77 1/2" - 1.9 m
Fuel capacity	N/A
Depth	38 3/4" - 1.0 m
Approximate weight	862 lbs. - 391 kg
Maximum load	1290 lbs. - 585 kg
H.P. Rating	120 h.p.
Steering	Mechanical
Glastron trailer	GA-16
Colors	Metalflake rust and tan Terra cotta and tan

STANDARD FEATURES:

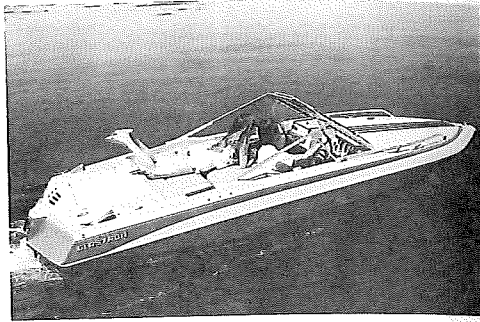
- Hand-laid fiberglass construction
- Aft removable jump seats
- Walk-through tempered glass windshield
- Pleated vinyl covered side storage trays
- Custom steering wheel
- Rack and pinion steering
- Concealed electric horn
- Built-in 18 gallon fuel system
- S/S bow eye and ski eyes
- Running lights with removable stern light
- In-floor ski locker
- Storage compartment under lounge seats
- Chrome-plated hardware
- Anodized aluminum bow rails
- Soft top and boot cover
- Back to back fold down lounge seats
- Cut pile carpet
- Teak step pads
- Level flotation
- B.I.A. certified

OPTIONS:

- Side and stern curtains
- Stern boarding ladder
- Mooring cover

PERFORMANCE:

- Optimum performance range 70 - 120 h.p.



SSV® - 164*

This sprightly entry in the Glastron line offers the stern-drive buyer the closed bow protection of the new SSV-164. All the performance, comfort, protection and style you've come to expect from Glastron.

* Design Patent Pending

LIST PRICE		SALE PRICE
_____	120 ME	_____
_____	140 ME	_____
_____	120 OMC	_____
_____	140 OMC	_____

SPECIFICATIONS:

LOA	16' 4" - 5.0 m
Beam	79 1/2" - 2.0 m
Motor shaft length	N/A
Transom width	77 1/2" - 1.9 m
Fuel capacity	18 gallons
Depth	38 3/4" - 1.0 m
Approximate weight	880 lbs. - 399 kg
Maximum load	900 lbs. - 408 kg
Steering	Mechanical - Rack and Pinion
Glastron trailer	GA-16
Colors	Metalflake Rust and Tan Terra Cotta and Tan

STANDARD FEATURES:

- Hand-laid fiberglass construction
- Two deep-foam, padded bucket seats
- In-floor ski storage
- Padded stern bench seat w/storage beneath
- Stern storage w/ice chests and cushioned lids
- Walk-through tempered glass windshield
- Anodized aluminum bow rails
- Stainless steel bow eye and ski eyes
- Running lights with removable light
- Side storage trays
- Chrome-plated hardware
- Plush carpet
- Glastron level flotation
- B.I.A. certified
- Teak step pads
- Custom steering wheel
- In-handle trim control
- Soft top and boot cover
- Concealed electric horn
- Built-in 18 gallon fuel system
- Command Console with: Speedometer, Tachometer, Electric fuel gauge, Oil pressure light, Engine Temperature light, Voltmeter, Rocker switches for Bilge pump, Blower, Horn, Accessory Tilt, and Trim, Lights
- New Convertible bench seat sun lounge

OPTIONS:

- Side and Stern Curtains
- Mooring Cover

SSV-167



SSV® - 167*

The sleek, open-bow SSV-167 offers the same stable, satin-smooth ride that has made Glastron's exclusive SSV-hull a major innovation in recent hull design. The extra roominess of the open bow and the roomy cockpit leave no doubt but what this is indeed a boat for the entire family's enjoyment.

*Design Patent Pending

PACKAGE PRICE _____	LIST
Boat _____	_____
Motor _____ H.P.	_____
Trailer _____	_____
Accessories _____	_____
Total List _____	_____
Sale Price _____	_____

SPECIFICATIONS:

LOA	16' 2 1/4" - 4.9 m
Beam	79 1/4" - 2.0 m
Motor shaft length	20" - 50.8 cm
Transom width	77 1/4" - 1.9 m
Fuel capacity	18 gallons
Depth	38 3/4" - 1.0 m
Approximate weight	860 lbs. - 391 kg
Maximum load	1290 lbs. - 585 kg
H.P. Rating	120 h.p.
Steering	Mechanical - Rack and Pinion
Glastron trailer	GA-16
Colors	Metalflake Blue Metalflake Bronze Terra Cotta and Tan

STANDARD FEATURES:

- Hand-laid fiberglass construction
- Back-to-back fold down lounge seats
- In-floor ski locker
- Side tray storage
- Walk-through tempered glass windshield
- Anodized aluminum bow rail
- Chrome-plated hardware
- Plush carpet
- Teak step pads
- Custom steering wheel
- Concealed electric horn
- Built-in 18 gallon fuel tank
- Stainless steel bow eye and ski eyes
- Soft top system with boot cover
- Cockpit courtesy light
- Running lights with removable stern light
- Foam-cushioned bow seating
- Built-in ice chest under bow seat
- Level flotation
- B.I.A. certified

OPTIONS:

- Stern boarding ladder
- Tonneau bow cover
- Side and stern curtains
- Mooring cover

PERFORMANCE:

Optimum Performance Range 70 - 120 h.p.



SSV® - 168*

Stow your skis in a built-in ski locker, stock the built-in ice chest, load the family in the roomy open-bow and spacious cockpit — and head the all new stern-drive powered SSV-168 into a world of adventure.

* Design Patent Pending

LIST PRICE		SALE PRICE
_____	120 ME	_____
_____	140 ME	_____
_____	120 OMC	_____
_____	140 OMC	_____

SPECIFICATIONS:

LOA	16'4" - 5.0 m
Beam	79¼" - 2.0 m
Motor shaft length	N/A
Transom width	77¼" - 1.9 m
Fuel capacity	18 gallons
Depth	38¾" - 1.0 m
Approximate weight	880 lbs. - 399 kg
Maximum load	900 lbs. - 408 kg
Steering	Mechanical - Rack and Pinion
Glastron trailer	GA-16
Colors	Metalflake bronze and tan Metalflake Rust and Tan Terra Cotta and Tan

STANDARD FEATURES:

- Hand-laid fiberglass construction
- Two deep foam padded bucket seats
- In-floor ski locker
- Stern bench seat with storage beneath
- Stern storage with ice chest and cushioned lids
- Side storage trays
- Walk-through tempered glass windshield
- Anodized Aluminum bow rails
- Chrome-plated hardware
- Plush carpet
- Teak step pads
- B.I.A. certified
- Ice chest built-in under bow seats
- Custom steering wheel
- In-handle trim control
- Stainless steel bow eye and ski eyes
- Soft top and boot cover
- Concealed electric horn
- Built-in 18 gallon fuel system
- Running lights with removable stern light
- Glastron level flotation
- Command Console with: Speedometer, Tachometer, Electric Fuel Gauge, Oil Pressure Light, Engine Temperature Light, Voltmeter, Rocker Switches for Bilge Pump, Blower, Horn, Accessory, Tilt and Trim Lights

OPTIONS:	Side and Stern Curtains
Tonneau Cover	Custom Mooring Cover

SSV-169 Sprint



SSV® - 169 Sprint*

The SSV-169 Sprint — the sleek, low profile introduction to the new 16-footers. Racy smoothness, buckets and bench seating, stylish walk-through tinted windshields, and eye-catching graphics team with the surge of outboard power for the sport package of the 80's.

* Design Patent Pending

PACKAGE PRICE _____	LIST
Boat	_____
Motor _____ H.P.	_____
Trailer	_____
Accessories	_____
Total List	_____
Sale Price	_____

SPECIFICATIONS:

LOA	16'2¼" - 4.9 m
Beam	79¼" - 2.0 m
Motor shaft length	20" - 50.8 cm
Transom width	77¼" - 1.9 m
Fuel capacity	18 gallons
Depth	38¾" - 1.0 m
Approximate weight	840 lbs. - 381 kg
Maximum load	1290 lbs. - 585 kg
H.P. Rating	120 h.p.
Steering	Mechanical - Rack and Pinion
Glastron trailer	GA-16
Colors	Metalflake Silver and Gray

STANDARD FEATURES:

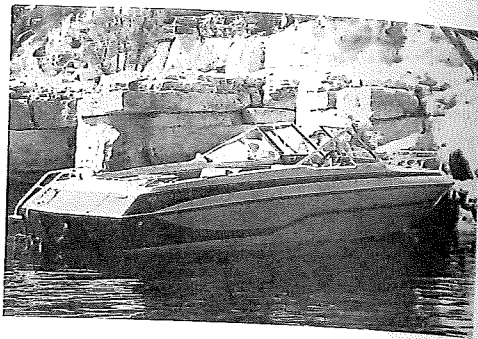
- Hand-laid fiberglass construction
- Two deep foam padded bucket seats
- Bow seats with foam cushions
- Padded stern bench seat with storage beneath
- Ice chest under bow seats
- In-floor ski locker
- Side storage trays
- Sleek plexiglass windshield
- Anodized aluminum bow rails
- Chrome-plated hardware
- Plush carpet
- Teak step pads
- Custom steering wheel
- Built-in 18 gallon tank with electric gauge
- Stainless steel bow eye and ski eyes
- Running lights with removable stern light
- Level flotation
- B.I.A. certified

OPTIONS:

- Stern Boarding Ladder
- Tonneau Cover
- Mooring Cover

PERFORMANCE:

Optimum Performance Range 70 - 120 h.p.



SSV® - 173

The closed bow SSV-173 is a true performer. Super smooth, super stable, with economical 4 and V-6 stern-drive power. Closed bow protection and sleek SSV style make this one of the best all weather boats made.

LIST PRICE		SALE PRICE
_____	140 ME	_____
_____	470 ME	_____
_____	140 OMC	_____
_____	V-6 OMC	_____

SSV-173

SPECIFICATIONS:

LOA	17' 1" - 5.2 m
Beam	83" - 2.1 m
Motor shaft length	N/A
Transom width	79" - 2.0 m
Fuel capacity	18 gallons
Interior depth	46 3/4" - 1.2 m
Approximate weight	1100 lbs. - 499 kg
Maximum load	1050 lbs. - 476 kg
Steering	Mechanical - Rack and Pinion
Glastron trailer	G-17
Colors	Terra Cotta and Tan

STANDARD FEATURES:

Hand-laid fiberglass construction	Two back to back lounge seats
Ice chest	Bow locker with hinged door
B.I.A. certified	Lockable glove box
Storage under lounge seat	Chrome-plated hardware
Side storage trays	Plush carpet
Walk-through tempered glass windshield	Teak step pads
Custom steering wheel	Concealed electric horn
Built-in 18 gallon fuel system	S/S bow eye and ski eyes
Running lights w/ removable stern light	Glastron level flotation Command Console with: tachometer, electric fuel gauge, oil pressure light, engine temp. light, voltmeter, and rocker switches for bilge pump, blower, tilt and trim, accessory, horn and lights
Stern boarding ladder	
Bilge pump, bilge blower	
Cockpit courtesy lights	
In-handle trim control	
Easy up soft top w/ Boot cover	
In-floor ski storage	

OPTIONS:

Side and stern curtains	Mooring cover
-------------------------	---------------

PERFORMANCE:

Normal speed range	OMC 140: 38-40 mph/61-64 kph
	Merc 140: 40-42 mph/64-67 kph
	Merc 470: 45-47 mph/72-75 kph

SSV-176



SSV® - 176

The SSV hull is setting the standard for excellence in performance and stability in the medium-sized boat world. "Super smooth", "super stable" and all the built-in features for family boating excitement. The outboard SSV-176 runs quiet in chop with an open bow that gives extra room for family and gear. Quick, quiet and a great all around performance outboard.

PACKAGE PRICE	LIST
Boat	_____
Motor _____ H.P.	_____
Trailer	_____
Accessories	_____
Total List	_____
Sale Price	_____

SPECIFICATIONS:

- LOA
- Beam
- Motor shaft length
- Transom width
- Fuel capacity
- Depth
- Approximate weight
- Maximum load
- H.P. Rating
- Steering
- Glastron trailer
- Colors

- 17' 1 1/2" - 5.0 m
- 83" - 2.1 m
- 20" - 50.8 cm
- 79" - 2.0 m
- 18 gallons
- 46 3/4" - 1.2 m
- 955 lbs. - 430 kg
- 1550 lbs. - 703 kg
- 140 h.p.
- Mechanical - Rack and Pinion
- G-17
- Metalflake Rust and Tan
- Metalflake Blue and Blue

STANDARD FEATURES:

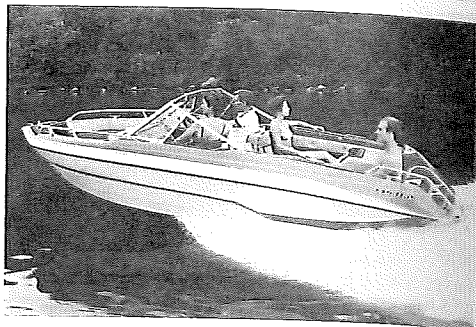
- Hand-laid fiberglass construction
- Two back to back lounge seats
- Ice chest under bow seat
- Lift up table between stern seats
- Bow locker with hinged door
- Storage under lounge and bow seats
- Walk-through tempered glass windshield
- Anodized aluminum bow rails
- Chrome-plated hardware
- Built-in 18 gallon fuel system
- Easy-up soft top with boot cover
- Running lights w/removable stern light
- Stainless steel bow eye and ski eyes
- Stern jump seats
- Side storage trays
- Custom steering wheel
- Rack and pinion steering
- Concealed electric horn
- Lockable glove box
- Teak step pads
- Level flotation
- In-floor ski locker
- B.I.A. certified

OPTIONS:

- Stern boarding ladder
- Side and stern curtains
- Mooring cover

PERFORMANCE:

- Optimum performance range 70-140 h.p.
- Normal speed range 70 h.p. - 30-35 mph/48-56 kph
- 85 h.p. - 38-42 mph/61-67 kph
- 115 h.p. - 45-47 mph/72-75 kph
- 140 h.p. - 48-50 mph/76-80 kph



SSV® - 177

An elegant 17-foot stern-drive with spacious interior and SSV performance. This deluxe all-around family SSV is smooth riding, easy handling, predictable and secure. Just the right size for trailering.

LIST PRICE		SALE PRICE
_____	OMC 140	_____
_____	OMC V-6	_____
_____	Merc 140	_____
_____	Merc 470	_____

SSV-177

SPECIFICATIONS:

LOA	17' 1" - 5.2 m
Beam	83" - 2.1 m
Motor shaft length	N/A
Transom width	79" - 2.0 m
Fuel capacity	25 gallons
Depth	46 3/4" - 1.2 m
Approximate weight	1100 lbs. - 499 kg
Maximum load	1050 lbs. - 476 kg
Steering	Mechanical - Rack and Pinion
Glastron trailer	G-17
Colors	Metalflake Rust and Tan Metalflake Blue and Blue

STANDARD FEATURES:

Hand-laid fiberglass construction	Command console with: speedometer, tachometer, electric fuel gauge, oil pressure light, engine temp. light, switches for bilge pump, blower, horn, accessory, tilt and trim, lights
Anodized aluminum bow rails	Chrome-plated hardware
Built-in 25 gallon fuel system	Plush carpet
Drinkholders in engine cover	Teak step pads
Bow locker w/hinged door	Custom steering wheel
Storage compartment under lounge seats	In-handle trim control
Ice chest under bow seat	Cockpit courtesy lights
Side storage trays	Stern boarding ladder
Walk-through tempered glass windshield	Glastron level flotation B.I.A. certified
Easy up soft top with boot cover	In-floor ski locker
Running lights with removable stern light	
Two back to back lounge seats	
Two stern seats	

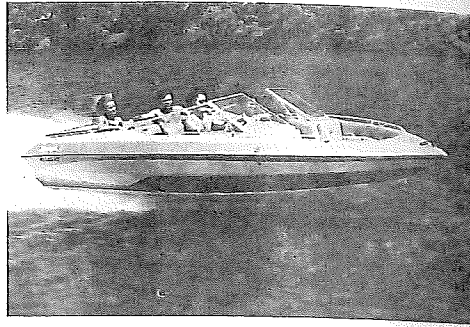
OPTIONS:

Side and Aft curtains
Tonneau cover
Mooring cover

PERFORMANCE:

Normal speed range	OMC 140: 38-40 mph/60-64 kph
	Merc 140: 40-42 mph/64-67 kph
	Merc 470: 45-47 mph/72-75 kph

SX-190



SX-190

New for 1981, the SX-190 has sport boat styling with family features. This outstanding performer's new features include digital clock, stereo and plush interior that match its all-around good looks.

LIST PRICE		SALE PRICE
_____	OMC V-6	_____
_____	Merc 470	_____
_____	Merc 485	_____
_____	Merc 228	_____

SPECIFICATIONS:

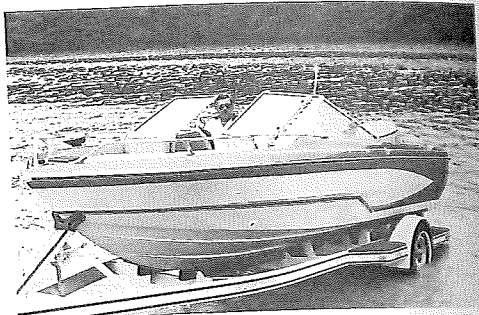
LOA	18'8" - 5.7 m
Beam	88 1/4" - 2.24 m
Motor shaft length	N/A
Transom width	85 1/2" - 2.17 m
Fuel capacity	28 gallons
Depth	42-1/8" - 1.0 m
Approximate weight	1250 lbs. - 567 kg
Maximum load	1200 lbs. - 544 kg
Steering	Power steering (where applicable)
Glastron trailer	G-19
Colors	Metalflake Aztec gold Metalflake blue and white

STANDARD FEATURES:

Hand-laid fiberglass construction	Command Console with: speedometer, tachometer, electric fuel gauge, oil pressure gauge, engine temperature gauge, voltmeter, dash warning lights
Anodized aluminum bow rails	Switch plate under control handle with: rocker switches for bilge pump, blower, horn, lights, accessories
Power steering (where applicable)	Teak step pads
Ski storage under bench seat	Custom steering wheel
Chrome-plated hardware	In-handle trim control
Plush carpet	Cockpit courtesy lights
S/S bow eye and ski eyes	Glastron level flotation
Soft top system w/ boot cover	Lockable glove box
Running lights w/removable stern light	Bow storage compartment
Rack and pinion steering	Ice chest in floor
Walk-through tempered glass windshield	Concealed electric horn
Open bow w/cushioned seating	Port mounted digital clock
Bench and bucket seating	
Aft sun lounge	
B.I.A. certified	
AM/FM stereo system w/ two 5" speakers	

OPTIONS:

- Side and aft curtains
- Tonneau cover
- Mooring cover



V-192

The V-192 is the most elegant outboard deep vee in its class. Rated for V-6 power, this big family performer smooths out the roughest of seas. Completely appointed with features for every boating requirement, this 19-footer leads the outboard family class.

PACKAGE PRICE

LIST

Boat	_____
Motor _____ H.P.	_____
Trailer	_____
Accessories	_____
Total List	_____
Sale Price	_____

V-192

SPECIFICATIONS:

LOA	18' 9" - 5.7 m
Beam	87" - 2.2 m
Motor shaft length	25" - 63.5 cm
Transom width	83½" - 2.1 m
Fuel capacity	25 gallons
Depth	48½" - 1.2 m
Approximate weight	1330 lbs. - 603 kg
Maximum load	1850 lbs. - 839 kg
H.P. Rating	175 h.p.
Steering	Mechanical - Rack and Pinion
Glastron trailer	G-19
Colors	Metalflake blue and blue

STANDARD FEATURES:

- Hand-laid fiberglass construction
- Wrap-around bow seats, back rests, bolsters
- Storage under lounge and bow seats
- Anodized aluminum bow rails
- Deck mounted electric horn
- Table with drinkholders between stern seats
- Running lights with removable stern light
- Lockable glove box
- In-floor ski storage
- Plush carpet
- Custom steering wheel
- S/S bow eye and ski eyes
- Level flotation
- Two back to back lounge seats
- Bow locker with hinged door
- Walk-through tempered glass windshield
- Self-draining bow compartment
- Built-in 25 gal. fuel tank with electric gauge
- Easy-up soft top system with boot cover
- Two stern seats
- Ice chest
- Side tray storage
- Chrome-plated hardware
- Teak step pads
- Rack and pinion steering
- Cockpit courtesy lights
- B.I.A. certified

OPTIONS:

- Stern boarding ladder
- Side and stern curtains
- Tonneau cover
- Mooring cover



SSV® - 194

This closed-bow, plush-interior 19-footer has the ingredients to make it a big winner in 1981. The smooth ride and outstanding performance set the SSV-194 apart from the crowd.

LIST PRICE		SALE PRICE
_____	OMC V-6	_____
_____	Merc 470	_____
_____	Merc 485	_____
_____	Merc 228	_____

SSV-194

SPECIFICATIONS:

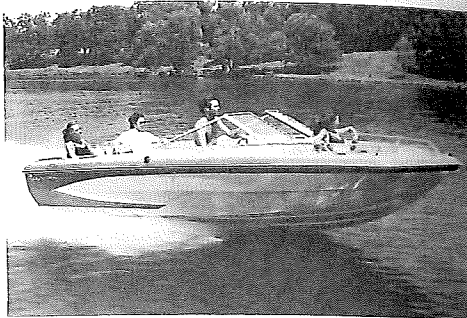
LOA	18' 8" - 5.7 m
Beam	88 1/2" - 2.24 m
Motor shaft length	N/A
Transom width	85 1/2" - 2.17 m
Fuel capacity	25 gallons
Depth	42 1/4" - 1.0 m
Approximate weight	1230 lbs. - 558 kg
Maximum load	1200 lbs. - 544 kg
Steering	Power steering (where applicable)
Glastron trailer	G-19
Colors	Metalflake Aztec gold Terra cotta and tan

STANDARD FEATURES:

Hand-laid fiberglass construction	In-floor ski storage
Power steering (where applicable)	Anodized aluminum bow rail
Aft jump seats	Soft top system with boot cover
Port convenience strap	Built-in 25 gallon fuel system
AM/FM cassette stereo system with two 5" speakers	Command console with: speedometer, tachometer, electric fuel gauge, oil pressure gauge, engine temp. gauge, voltmeter, dash warning lights,
Port mounted digital clock	New switch plate with rocker switches for bilge blower, pump, accessory, horn, lights
Chrome-plated hardware	Fold down lounge seats
Plush carpet	Concealed electric horn
Teak step pads	
Custom steering wheel	
In-handle trim control	
S/S bow eye and ski eyes	
Cockpit courtesy lights	
Glastron level flotation	
Lockable glove box	
Sun lounge pad at stern	

OPTIONS:

- Side and aft curtains
- Mooring cover



V-195

A perfect combination of space, performance and comfort, the V-195 has a smooth running deep vee hull and open bow seating for optimum family usage. Sporty metallic gel coat attracts attention wherever it goes. Comfort, convenience and performance highlight this big family stern drive.

LIST PRICE		SALE PRICE
_____	OMC 260	_____
_____	OMC V-6	_____
_____	Merc 228	_____
_____	Merc 260	_____
_____	Merc 485	_____

V-195

SPECIFICATIONS:

LOA	18' 10½" - 5.7 m
Beam	87" - 2.2 m
Motor shaft length	N/A
Transom width	83½" - 2.1 m
Fuel capacity	28 gallons
Depth	48½" - 1.2 m
Approximate weight	1467 lbs. - 665 kg
Maximum load	1200 lbs. - 544 kg
Steering	Power steering
Glastron Trailer	G-19
Colors	Metalflake blue and blue Terra cotta and tan

STANDARD FEATURES:

- Hand-laid fiberglass construction
- Walk-through tempered glass windshield
- Rack and pinion steering
- Soft top system with boot cover
- Running lights w/removable stern light
- Anodized aluminum bow rails
- Two fold down lounge seats
- Built-in 28 gallon fuel system
- In-handle trim control
- B.I.A. certification
- Custom steering wheel
- Cockpit courtesy lights
- Concealed electric horn

- Command console with: speedometer, tachometer, electric fuel gauge, oil pressure gauge, engine temp. gauge, voltmeter, rocker switches for bilge pump, blower, horn, lights, accessory, tilt and trim
- Chrome-plated hardware
- Ice chest under bow seat
- Side tray storage
- In-floor ski storage
- Teak step pads
- Lockable glove box
- Plush carpet
- S/S bow eye and ski eyes
- Glastron level flotation

OPTIONS:

- Swim platform
- Side and stern curtains
- Mooring cover



HPV-160

One of the newest members of our bassboat family is this 16-foot modified vee hull. A superb fishing boat designed for speed, stability and a soft ride, with room for all your gear.

PACKAGE PRICE	_____	LIST
Boat	_____	_____
Motor _____ H.P.	_____	_____
Trailer	_____	_____
Accessories	_____	_____
Total List	_____	_____
Sale Price	_____	_____

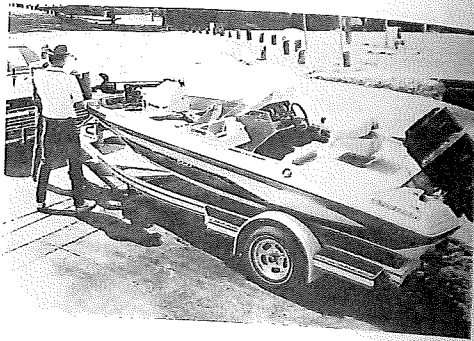
HPV-160

SPECIFICATIONS:

LOA	16' 2 1/4" - 5.0 m
Beam	79 1/2" - 2.0 m
Motor shaft length	20" - 50.8 m
Transom width	77 1/2" - 2.0 m
Fuel capacity	18 gallons
Depth	32" - .81 m
Approximate weight	925 lbs. - 420 kg
Maximum load	1075 lbs. - 488 kg
H.P. Rating	120 h.p.
Steering	Mechanical
Glastron trailer	GA-16
Colors	Metalflake Aztec Gold, Metalflake blue, Metalflake silver, Metalflake Rust

STANDARD FEATURES:

- Hand-laid fiberglass construction
 - 18-gallon fuel tank
 - Two folding removable spring-mounted seats that swivel 360°, two bow sockets for relocating seats
 - Bench between helmsman and passenger seats, storage below w/deep molded storage trays
 - Elevated casting platforms fore and aft, storage below, storage forward w/removable storage trays
 - Two circulating live wells double as ice chests
 - Reinforced foredeck for mounting electric trolling motor
 - Running lights with removable stern light
 - Storage compartment forward of helmsmans console
 - Helmsman's custom console: soft grip competition steering wheel, mechanical steering, electric fuel gauge, switches for livewell pump, accessories, inland lighting, bilge pump
 - Custom bow accessory panel: pre-wired trolling motor outlet w/12/24 volt switch, molded plug w/ two connections, engine tilt switch, volt gauge w/battery test switch, charge switch, cigar lighter w/chart light
 - Lockable port rod and ski locker with cushioned lid
 - Flush-mounted lift handles on bow & aft compartments
 - Stern battery/storage compartment with removable storage trays
 - Plush carpet
 - Bilge pump
 - Level flotation
 - Metalflake finish
- OPTIONS:**
- Tinted or clear plexiglass sleek windscreen(s)
 - Tinted or clear plexiglass upright windscreen(s)
 - Instrument console with speedometer and tachometer
 - Boarding ladder
 - Mooring cover 45



HPV-165

This 16-footer combination fish-or-ski is versatile enough to meet all the demands of a boating family. An added console and padded bow seating makes it a fishing boat useful enough for the family. With a rating up to 120, it has the power to meet all your skiing/fishing needs.

PACKAGE PRICE	_____	LIST
Boat		_____
Motor _____ H.P.		_____
Trailer		_____
Accessories		_____
Total List		_____
Sale Price		_____

HPV-165

SPECIFICATIONS:

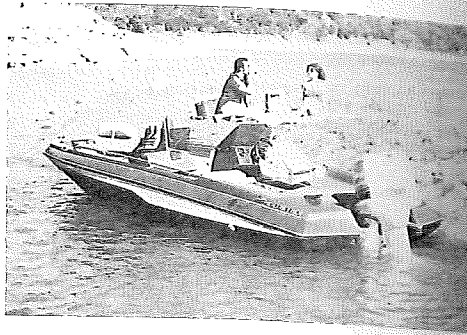
LOA	16' 2 1/4" - 5.0 m
Beam	79 1/2" - 2.0 m
Motor shaft length	20" - 50.8 cm
Transom width	77 1/2" - 2.0 m
Fuel capacity	18 gallons
Depth	32" - .81 m
Approximate weight	950 lbs. - 431 kg
Maximum load	1075 lbs. - 488 kg
H.P. Rating	120 h.p.
Steering	Mechanical
Glastron trailer	GA-16
Colors	Metalflake Aztec Gold, Metalflake Blue, Metalflake Silver, Metalflake Rust

STANDARD FEATURES:

Two folding, removable spring-mounted seats, swivel 360°
 In-floor ski locker
 Bench seat between helmsmans and passenger seats, storage below
 Elevated casting platforms fore & aft, storage below and forward
 18 gallon fuel tank (in floor)
 Two circulating livewells double as ice chests
 Reinforced foredeck for mounting electric trolling motor
 Helmsman custom console: Softgrip competition steering wheel, mechanical steering, electric fuel gauge, switches for livewell, pump, accessories, inland lighting and bilge pump
 Storage compartment forward of helmsman console
 Custom bow accessory panel: pre-wired trolling motor outlet w/12/24 volt switch, molded plug with two connections, engine tilt switch, volt gauge w/chart light test switch, charge switch, cigar lighter w/chart light
 Lockable port rod and ski locker w/cushioned lid
 Marine hardware, bow & ski eyes, handrails
 Stern battery/storage compartment w/ removable storage trays
 Running lights w/removable stern light
 Twin consoles w/storage tray in passenger console
 Deep foam-padded forward bench seats w/backrests
 Metalflake finish Level flotation
 Bilge pump B.I.A. certified

OPTIONS:

Tinted or clear plexiglass sleek windscreen(s)
 Tinted or clear plexiglass upright windscreen(s)
 Helmsman console with speedometer/tachometer
 Boarding ladder Mooring cover 47



HPV-175

Enjoy the best of both worlds with this combination fish-or-ski. Go fishing in the morning, remove the fishing seats in the afternoon, and enjoy skiing at its best. Roomy, comfortable and powerful with up to 175 horsepower.

PACKAGE PRICE _____	LIST
Boat _____	_____
Motor _____ H.P.	_____
Trailer _____	_____
Accessories _____	_____
Total List _____	_____
Sale Price _____	_____

HPV-175

SPECIFICATIONS:

LOA	17' 9½" - 5.4 m
Beam	91¼" - 2.3 m
Motor shaft length	20" - 50.8 cm
Transom width	90" - 2.2 m
Fuel capacity	25 gallons
Depth	35¾" - .91 m
Approximate weight	1115 lbs. - 507 kg
Maximum load	1180 lbs. - 507 kg
H.P. Rating	175 h.p.
Steering	Mechanical
Glastron trailer	H-17
Colors	Metalflake silver, Metalflake rust, Metalflake bronze

STANDARD FEATURES:

- Hand-laid fiberglass construction
 - 25 gallon fuel tank (in floor)
 - Two folding removable spring mounted seats, swivel 360° (2-position front seat mount)
 - Bench seat between helmsman and passenger seats, storage below in deep molded storage trays
 - Elevated casting platform fore and aft, storage below
 - Two circulating livewells double as ice chests
 - Reinforced foredeck for mounting electric trolling motor
 - Helmsman's custom console: soft grip competition steering wheel, electric fuel gauge, tachometer, speedometer, switches for livewell pump, bilge pump, accessories and inland lighting
 - Custom box accessory panel: pre-wired trolling motor w/12/24 volt switch, molded plug w/two connections, switch, cigar lighter w/chart light
 - Two lockable rod and ski lockers
 - Marine hardware, bow and ski eyes, handrail
 - Stern battery/storage compartment with removable storage trays
 - Running lights with removable stern light
 - 45-quart ice chest built into floor
 - Twin custom consoles w/storage tray in passenger console
 - Metalflake finish
 - Level flotation
 - Bilge pump
 - B.I.A. certified
- OPTIONS:**
- Tinted or clear plexiglass sleek windscreen(s)
 - Tinted or clear plexiglass upright windscreen(s)
 - Boarding ladder
 - Mooring cover



V-217

The ideal party boat with an entertainment center on the port bulkhead. The cockpit offers a friendly meeting place for your friends. The steady performing 21-foot hull makes this one an ideal choice for that crowd to party in.

LIST PRICE		SALE PRICE
_____	Merc 485	_____
_____	Merc 228	_____
_____	Merc 260	_____
_____	OMC 260	_____
_____	OMC V-6	_____

V-217

SPECIFICATIONS:

LOA	20' 6½" - 6.3 m
Beam	96" - 2.4 m
Motor shaft length	N/A
Transom width	91½" - 2.3 m
Fuel capacity	47 gallons
Depth	59½" - 1.5 m
Approximate weight	2320 lbs. - 1052 kg
Maximum load	1500 lbs. - 681 kg
Steering	Power steering
Glastron trailer	G-21
Colors	Terra cotta and tan

STANDARD FEATURES:

- Hand-laid fiberglass construction
 - Bold print upholstery
 - Two stern jump seats convert to sun lounge
 - Side storage tray
 - Stainless steel steering wheel
 - Built-in 47 gallon fuel system
 - Stainless steel bow rail
 - Soft top system with boot cover
 - Port side sink and storage compartment
 - Deluxe cabin with 6 foot vee berths
 - Folding lockable door to cabin
 - Tinted skylight bow hatch
 - High-low seating in cuddy cabin
 - In-handle trim control
 - Command console with: speedometer, tachometer, electric fuel gauge, oil pressure light, engine temp. light, voltmeter, rocker switches for bilge pump, blower, horn, accessory, tilt and trim, lights
 - Transom platform with ladder
 - Stainless steel bow eye and ski eyes
 - Anchor line guide forward
 - Plush carpet
 - Foam flotation
 - Bold print upholstery
 - Teak step pads
 - B.I.A. certified
- OPTIONS:**
- Hydraulic boat levelers
 - Windshield wipers
 - Single trumpet horn
 - Portable head
 - Boarding ladder
 - Side and aft curtains
 - Handi-head with pumpout plate
 - Handi-head with overboard pump
 - Dinette (port)
 - Galley
 - Hour meter
 - Compass
 - Mooring cover



V-225

A classic day cruiser with deep vee performance and comfort. A tested 22-footer with plenty of power and options to customize to your cruiser needs.

LIST PRICE		SALE PRICE
_____	Merc 485	_____
_____	Merc 228	_____
_____	Merc 260	_____
_____	OMC 260	_____
_____	OMC V-6	_____

V-225

SPECIFICATIONS:

LOA	22'1 1/2" - 6.7 m
Beam	91 1/2" - 2.3 m
Motor shaft length	N/A
Transom width	82" - 2.1 m
Fuel capacity	47 gallons
Depth	67 3/4" - 1.7 m
Approximate weight	2275 lbs. - 1034 kg
Maximum load	1500 lbs. - 681 kg
Steering	Mechanical
Glastron trailer	G-22
Colors	Opaque brown and tan interior

STANDARD FEATURES:

Hand-laid fiberglass construction
 Port back to back fold-down lounge seat w/storage
 Folding adjustable helmsman seat
 Cushioned engine cover and removable stern seats form sun lounge
 Padded side storage trays with drink holders
 Storage compartment under port lounge seat
 Deluxe teak decor in cabin and cockpit
 Soft top with stand-up head room w/boot cover
 Power steering where applicable
 Built-in 47 gallon fuel tank
 Bilge pump w/automatic float switch, bilge blower
 Command console hinged for easy access: speedometer, electric fuel gauge, voltmeter, oil pressure gauge, engine temperature gauge, and rocker switches for bilge pump, blower, horn, accessory, tilt and trim, lights
 Deluxe cabin with seven foot vee berths, bold print upholstery, cabin light, storage trays, tinted windows with curtains, inside latching hatch to bow area, folding lockable door to cabin
 S/S steering wheel In-handle trim
 Rack and pinion steering Teak taffrail
 Foam flotation B.I.A. certified

OPTIONS:

Teak swim platform	Hour meter
Fold down boarding ladder	Compass
Hydraulic boat levelers	Electric trumpet horn
Starboard windshield wiper	Side/stern curtains
Custom mooring cover	Camper canvas
Galley dinette with table that lowers to form berth, sink, water system, pantry, ice box, alcohol stove	Handi-head w/ over-board pump
	Handi-head w/pump-out deck plate
	Porta Potti



V-266

The ultimate in a 26-foot trailable cruiser! Here's a live-on cruiser that has all the excellent conveniences of home, plus performance not found in any other boat of this size. A thoroughly thought-out, flush-deck cruiser, for fishing, skiing and all around boating fun.

LIST PRICE		SALE PRICE
_____	OMC 260	_____
_____	Merc 260	_____
_____	Twin Merc 470	_____
_____	Trailer	_____
_____	Accessories	_____
_____	Package price	_____

V-266

SPECIFICATIONS:

LOA	25' 7" - 7.8 m
Beam	96" - 2.4 m
Motor shaft length	N/A
Transom width	91" - 2.3 m
Fuel capacity	100 gallons
Depth	104" - 2.6 m
Approximate weight	3405 lbs. - 1544 kg
Maximum load	2300 lbs. - 1043 kg
Glastron trailer	G-26
Colors	White w/brown/tan-brown interior, White w/marine blue-blue & white interior

STANDARD FEATURES:

Hand-laid fiberglass construction
 Two adjustable pedestal bucket seats
 Below deck engine compartment w/ fiberglass hatch
 Removable companionway hatch cover converts to cockpit table
 Tempered glass tinted windshield with vented side
 Built-in 100 gallon fuel system
 Teak taffrail with safety chains
 Inside latching tinted plexiglass hatch
 Folding lockable door to cabin
 Stand-up head w/molded shower stall w/porta potti, sink, storage cabinet
 30-gallon electrical water system
 Overhead lighting with 2-way switch
 Deluxe cabin w/six foot vee berths
 Command console: speedometer, tachometer, electric fuel gauge, oil pressure gauge, engine temperature gauge, voltmeter, and rocker switches for bilge pump, blower, horn, accessory, tilt and lights
 Battery crossover system
 S/S bow rails & fittings
 Mirrored bulkhead
 Cabin lights
 Sliding cabin windows

Rope and anchor locker
 Ice box
 Aft cabin
 Stowable dinette

OPTIONS:

Hydraulic boat levelers / Full transom platform with ladder / Hour meter / Compass / Windshield wipers / Single trumpet horn / Remote spotlight / Aft bench seat / 110v dockside power / 110/12v refrigerator / Alcohol/Electric stove / Handi-head with pumpout plate / Handi-head with overboard pump / Boarding ladder / European adaptor kit / Side and stern curtain/ Mooring cover / Cruise curtain / Taffrail spray curtain/ Helm enclosure canvas



V-243

Fishing from the new walk-around V-243 Sea Fury® is a true pleasure. There's easy access to all parts of the boat with a spacious cruiser for getting out of the weather. Storage is found through-out including below-deck bait and fish wells. The V-243 takes power to 280 h.p. and is easily trailered to your favorite fishing spot. From there it's a smooth run with the deep vee hull to a day of fun.

PACKAGE PRICE	_____	LIST
Boat	_____	_____
Motor _____ H.P.	_____	_____
Trailer	_____	_____
Accessories	_____	_____
Total List	_____	_____
Sale Price	_____	_____

V-243

SPECIFICATIONS:

LOA	24' 4" - 7.4 m
Beam	96" - 2.4 m
Motor shaft length	Twin - 20" - 50.8 cm
	Single - 25" - 63.5 cm
Transom width	94 1/4" - 2.4 m
Fuel capacity	103 gallon
Depth	69 1/4" - 1.8 m
Approximate weight	2650 lbs. - 1202 kg
Maximum load	2280 lbs. - 1034 kg
Steering	Rack and pinion
Giastron trailer	G-24
Colors	Brown and white

STANDARD FEATURES:

- Padded seat forward of center cabin with storage beneath for soft top
- Stainless steel bow rail with fittings
- Corrosion resistant hardware
- Enclosed center cabin with cushioned vee berths and in-bulkhead cabinets, space for optional head, sliding cabin windows with screens, folding cabin door with lockable hatch cover, ample storage
- Self-bailing cockpit w/fiberglass liner
- 103-gallon built-in fuel tank w/direct reading gauge
- Large in-floor fishwells/baitwells w/teak-ply lids
- Teak rod racks under gunwales
- Hinged splashwell transom deflector
- Stern storage compartments
- Non-skid 14" walk-around center cabin
- Hand-laid fiberglass construction
- Tempered glass tinted windshield
- High volume bilge pump w/automatic float switch
- International running lights
- Hauser fittings in aft corners
- Foam flotation
- Non-skid deck and floor
- Custom instrument panel
- Teak step pads
- Bow pulpit
- Two helmsman chairs
- Recessed rod holders
- S/S steering wheel
- B.I.A. certified
- S/S bow and ski eyes

OPTIONS:

- Deluxe instrument package: speedometer, hour meter, electric fuel gauge
- Windshield wiper
- Portable head
- Helm enclosure canvas
- 15' outrigger kit w/rod holder
- Compass
- Electric horn
- Hour meter only
- Mooring cover



V-216

A "best of both worlds" fishing boat with walk-around convenience, and a spacious cuddy cabin. Console/cabin with windshield gives running protection from weather plus a cabin for enclosed sleeping or storage. All the great Sea Fury® features in a super outboard walk-around package.

PACKAGE PRICE _____	LIST
Boat	_____
Motor _____ H.P.	_____
Trailer	_____
Accessories	_____
Total List	_____
Sale Price	_____

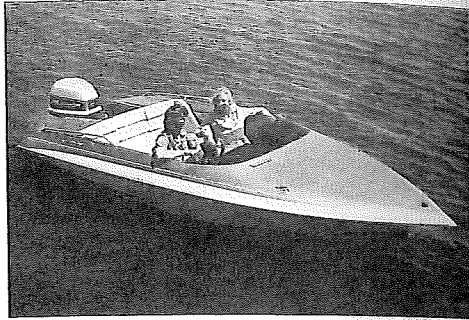
V-216

SPECIFICATIONS:

LOA	20' 7" - 6.3 m
Beam	96" - 2.4 m
Motor shaft length	Twin - 20" - 50.8 cm
	Single - 25" - 63.5 cm
Transom width	91½" - 2.3 m
Fuel capacity	75 gallons
Depth	64¼" - 1.6 m
Approximate weight	2030 lbs. - 921 kg
Maximum load	2280 lbs. - 1034 kg
H.P. Rating	220 h.p.
Steering	Rack and pinion
Glastron trailer	G-21
Colors	Brown and white

STANDARD FEATURES:

- Padded seat forward of center cabin w/storage beneath for soft top
 - S/S bow rail with fittings
 - Corrosion-resistant hardware
 - Enclosed center cabin with: cushioned vee berths and in-bulkhead cabinets, space for optional head, sliding cabin windows, folding cabin door with lockable hatch cover, ample storage
 - Self-bailing cockpit with fiberglass liner
 - 75-gallon built-in fuel tank w/direct reading gauge
 - Large in-floor fishwells/baitwells w/fiberglass lids
 - Teak rod racks under gunwales
 - Removable splashwell transom board
 - Removable battery access panel in splashwell
 - Non-skid 14" walkway around center cabin
 - Hand-laid fiberglass construction
 - Tempered glass tinted windshield
 - High volume bilge pump w/automatic float switch
 - Non-skid deck and floor
 - Bow pulpit
 - Recessed rod holders
 - Custom instrument panel
 - Foam flotation
 - Soft top
 - Two helm'sman chairs
 - S/S steering wheel
 - S/S bow and ski eyes
 - B.I.A. certified
 - Cabin light
- OPTIONS:**
- Custom helm'sman chair with slide
 - Hour meter only
 - Custom helm'sman vinyl cover
 - Compass
 - Deluxe instrument package: speedometer, electric fuel gauge, hour meter
 - Windshield wiper
 - Portable head
 - 15' outrigger kit w/rod holder
 - Mooring cover
 - Helm enclosure canvas



**C-500
Metric Series**

Here's 16 feet of pure outboard performance. Exciting, quick and strong. A spacious 16 with a brilliant metalflake finish that will make heads turn.

PACKAGE PRICE _____	LIST
Boat _____	_____
Motor _____ H.P.	_____
Trailer _____	_____
Accessories _____	_____
Total List _____	_____
Sale Price _____	_____

**C - 500
Metric Series**

SPECIFICATIONS:

LOA	16' 8" - 5.0 m
Beam	79 1/4" - 2.0 m
Motor shaft length	20" - 50.8 cm
Transom width	79" - 2.0 m
Depth	32" - .81 m
Approximate weight	690 lbs. - 312 kg
Maximum load	1230 lbs. - 558 kg
H.P. Rating	125 h.p.
Steering	Mechanical
Glastron trailer	CA - 16
Colors	Metalflake emerald mist Metalflake sunset red Metalflake stratus blue

STANDARD FEATURES:

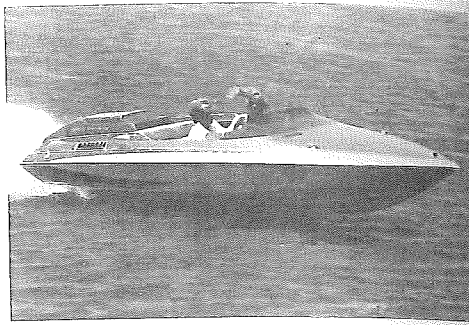
- Hand-laid fiberglass construction
- Two foam-padded steel cage bucket seats
- Padded stern bench with storage beneath
- Storage tray built into dash
- Boarding steps built into stern
- Custom sport wheel
- Competition metric series dash
- Built-in 18 gallon fuel system with electric fuel gauge
- Bow eye and ski eyes
- Running lights with removable stern light
- Positive foam flotation
- B.I.A. certified
- Deep plush marine carpet
- Concealed electric horn
- Contoured tinted plexiglass windscreen
- Speedometer
- Stern rails

OPTIONS:

- Custom mooring cover

PERFORMANCE:

Optimum performance range	70 - 125 h.p.
Normal speed range	85-100 h.p. - 43-45 mph/68-72 kph
	115-125 h.p. - 47-51 mph/76-82 kph



C - 537
Metric Series

New styling, a new size and a more efficient hull design to get you there fast with a minimum of power and energy. Destined to become the trend setter in performance sportboats for the 1980's.

LIST PRICE		SALE PRICE
_____	Merc 470	_____
_____	Trailers	_____
_____	Accessories	_____
	Package price \$	_____

C - 537
Metric Series

SPECIFICATIONS:

LOA	17' 6¾" - 5.3 m
Beam	79" - 2.0 m
Transom width	78½" - 1.9 m
Depth	34½" - .87 m
Approximate weight	752 lbs. - 341 kg
Maximum load	900 lbs. - 408 kg
Steering	Mechanical
Glastron trailer	C-17
Colors	Metalflake sunset red Metalflake stratus blue

STANDARD FEATURES:

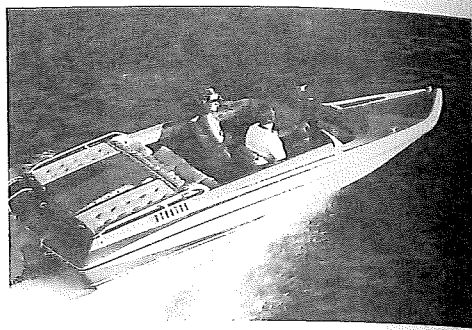
- Hand-laid fiberglass construction
- Two foam-padded steel cage bucket seats
- Padded stern bench with storage beneath
- Storage tray built into dash
- Boarding steps built into stern
- Stern rails
- Custom sport wheel
- Competition Metric Series dash
- Built-in 18 gallon fuel system w/electric fuel gauge
- Bow eye and ski eyes
- Running lights with removable stern light
- Positive foam flotation
- B.I.A. certified
- Contoured tinted plexiglass windscreen
- New accent graphics
- Concealed electric horn
- Deep plush marine carpet
- Stainless steel cleaver propeller
- Speedometer
- Tachometer
- Bilge pump and bilge blower

OPTIONS:

- Custom mooring cover

PERFORMANCE:

Normal speed range Merc 470: 54-59 mph/87-95 kph



CVX - 18

The champion of eighteens, a stern drive with class and performance. Strong out of the hole, smooth on the top end, elegant throughout. Name your pleasure.

LIST PRICE		SALE PRICE
_____	Merc 485	_____
_____	Trailer	_____
_____	Accessories	_____
Package Price		\$ _____

CVX - 18

SPECIFICATIONS:

LOA	18' 1½" - 5.5 m
Beam	90" - 2.3m
Transom width	86" - 2.2 m
Depth	37" - .9 m
Approximate weight	1050 lbs. - 476 kg
Maximum load	900 lbs. - 408 kg
Steering	Merc-Power
Glastron trailer	C - 18
Colors	Metalflake stratus blue with blue/blue interior

STANDARD FEATURES:

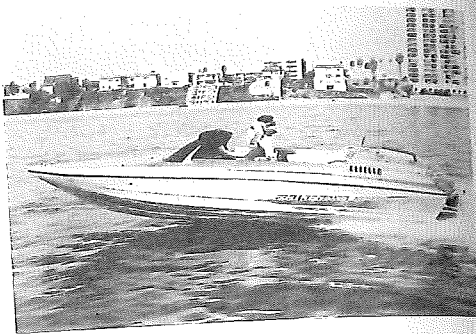
- Hand-laid fiberglass construction
- Two deep foam-padded swivel bucket seats
- Padded stern bench with ski storage beneath
- Two stern storage compartments with padded covers
- New accent graphics
- Contoured tinted plexiglass windscreen
- Chrome-plated hardware
- Deep plush marine carpet
- Concealed electric horn
- Built-in 27 gallon fuel system
- Running lights w/removable stern light
- Custom instrumentation: speedometer, tachometer, electric fuel gauge, oil pressure gauge, engine temp. gauge, voltmeter
- Grab bar
- Custom sport wheel
- Bilge pump and blower
- Stern boarding ladder
- In-handle trim control
- Stern rails
- Power steering
- Bow eye and ski eyes
- Positive foam flotation
- B.I.A. certified

OPTIONS:

- Removable competition ski tow
- Custom mooring cover

PERFORMANCE:

Normal speed range- Merc 485: 46-51 mph/74-82 kph



CALIFORNIA SPECIAL®

A powerful stern drive powered runabout built for those with an appetite for performance. New graphics and a competition styled motor cover make this an eye-catching new sportboat.

LIST PRICE		SALE PRICE
_____	Merc 260	_____
_____	Trailer	_____
_____	Accessories	_____
	Package Price \$	_____

CALIFORNIA SPECIAL

SPECIFICATIONS:

LOA	18' 1 1/2" - 5.5 m
Beam	90" - 2.3 m
Transom width	86" - 2.2 m
Depth	37" - .9 m
Approximate weight	1050 lbs. - 476 kg
Maximum load	900 lbs. - 408 kg
Steering	Merc-Power
Glastron trailer	C - 18
Colors	Metalflake Persian orange with buff, orange interior

STANDARD FEATURES:

- Hand-laid fiberglass construction
- Two deep foam-padded swivel bucket seats
- Padded stern bench with ski storage beneath
- Two stern storage compartments w/padded covers
- Grab bar
- Special accent graphics
- Contoured tinted plexiglass windscreen
- Stern rails
- Chrome-plated hardware
- Deep plush marine carpet
- Custom sport wheel
- Power steering
- Custom instrumentation: speedometer, tachometer, electric fuel gauge, oil pressure gauge, engine temp. gauge, voltmeter
- Concealed electric horn
- Built-in 27 gallon fuel system
- Running lights w/removable stern light
- Bilge pump
- Bow eye and ski eyes
- Positive foam flotation
- In-handle trim control
- Competition style motor cover
- Bilge blower
- Stern boarding ladder
- B.I.A. certified
- Stainless steel propeller

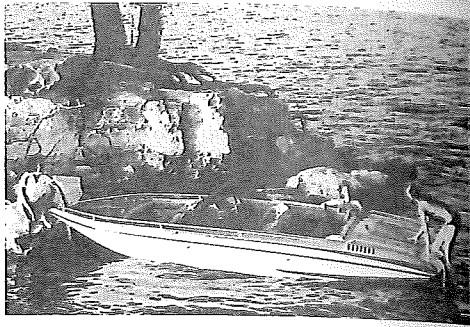
OPTIONS:

- Removable competition ski tow
- Custom mooring cover

PERFORMANCE:

Normal speed range - Merc 260: 60-62 mph/96-99 kph

CVZ - 18



CVZ - 18 Bow Rider

The Carlson 18 Bow Rider is fresh, strong, and unequalled. The fiery V-8 performance of this exciting convertible open bow stern drive will give the family a new escape into their vacation dreams. A new spacious 18' stern drive with the performance and good looks of a refined sports car.

LIST PRICE		SALE PRICE
_____	Merc 485	_____
_____	Merc 898	_____
_____	Merc 228	_____
_____	Trailer	_____
_____	Accessories	_____
	Package Price \$	_____

SPECIFICATIONS:

LOA	18' 1½" - 5.5 m
Beam	90" - 2.2 m
Transom width	86" - 2.2 m
Depth	37" - .94 m
Approximate weight	950 lbs. - 432 kg
Maximum load	1050 lbs. - 476 kg
Steering	Merc-Power
Glastron trailer	C-18
Colors	Metaflake emerald mist with green/mint interior

STANDARD FEATURES:

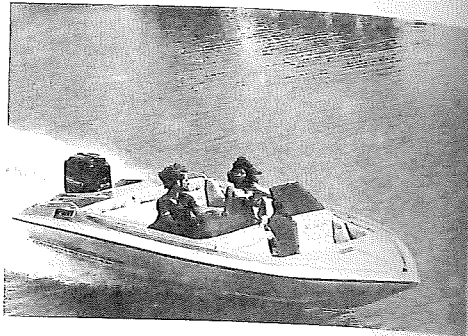
- Hand-laid fiberglass construction
- Two deep foam-padded swivel bucket seats
- Padded stern bench with ski storage beneath
- Padded bow seats with wraparound bolster
- Two stern storage compartments with padded covers
- Grab bar
- Walk-through tinted plexiglass windscreen
- Bow and stern rails
- Chrome-plated hardware
- Deep plush marine carpet
- Custom sport wheel
- Power steering
- Custom instrumentation: speedometer, tachometer, electric fuel gauge, oil pressure gauge, engine temp. gauge, voltmeter
- Built-in 26 gallon fuel system
- Running lights with removable stern light
- Bilge pump
- Bilge blower
- Bow eye and ski eyes
- Stern boarding ladder
- Positive foam flotation
- In-handle trim control
- B.I.A. certified

OPTIONS:

- Removable competition ski tow
- Custom mooring cover

PERFORMANCE:

Merc 485:	N/A
Normal speed range: Merc 898:	48-52 mph/76-83 kph
Merc 228:	N/A



CVZ - 19 Bow Rider

The Carlson CVZ-19 Bow Rider. Super performance with its deep vee hull and sculptured transom to reduce wind drag. A spectacular high performance family boat combining the versatility of an open bow with the sleek good looks of a low profile.

PACKAGE PRICE	LIST
Boat	_____
Motor _____ H.P.	_____
Trailer	_____
Accessories	_____
Total list	_____
Sale price	_____

CVZ - 19

SPECIFICATIONS:

LOA	18' 10" - 5.8 m
Beam	87" - 2.2 m
Motor shaft length	20" - 50.8 cm
Transom width	85½" - 2.2 m
Depth	37½" - 1.0 m
Approximate weight	1100 lbs. - 499 kg
Maximum load	1515 lbs. - 687 kg
H.P. Rating	175 h.p.
Steering	Mechanical
Glastron trailer	C-19
Colors	Metalflake emerald mist with green/mint interior

STANDARD FEATURES:

- Hand-laid fiberglass construction
- Two deep foam-padded swivel bucket seats
- Padded stern bench with ski storage beneath
- Padded bow seats with wraparound bolster
- Grab bar
- Walk-through tinted plexiglass windscreen
- Bow and stern rails
- Chrome-plated hardware
- Deep plush marine carpet
- Custom sport wheel
- Custom instrumentation: speedometer, electric fuel gauge
- Concealed electric horn
- Dual cable steering
- Built-in 27 gallon fuel system
- Bow eye and ski eyes
- Sculptured transom w/built-in boarding pads
- Running lights with removable stern light
- Positive foam flotation
- B.I.A. certified

OPTIONS:

- Stern boarding ladder (fits 1980 and '81 models only)
- Custom mooring cover
- Removable competition ski tow

PERFORMANCE:

Optimum performance range 115 - 175 h.p.



SKI MACHINE®

The ultimate ski boat for recreational or tournament water skiers. Designed for single outboard power, the Ski Machine delivers the kind of performance every skier needs and enjoys, whether it be slalom, trick, jumping, barefooting, or just plain recreation, there's no finer tow boat available.

PACKAGE PRICE

LIST

Boat	_____
Motor _____ H.P.	_____
Trailer	_____
Accessories	_____
Total list	_____
Sale price	_____

SKI MACHINE

SPECIFICATIONS:

LOA	20' 3" - 6.3 m
Beam	90 1/4" - 2.2 m
Motor shaft length	20" - 50.8 cm
Transom width	84 3/4" - 2.2 m
Depth	37" - .90 m
Approximate weight	1050 lbs. - 477 kg
Maximum load	1515 lbs. - 689 kg
H.P. Rating	200 h.p.
Steering	Dual cable
Colors	Metalflake gold with yellow/yellow interior

STANDARD FEATURES:

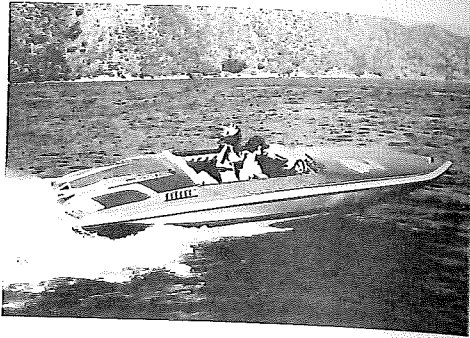
- Hand-laid fiberglass construction
- Deep foam-padded bucket seat for driver
- Two-person stern facing observer bench and twin rear jump seats with storage beneath
- Contoured tinted plexiglass windscreen
- Stern rails
- Chrome-plated hardware
- Deep plush marine carpet
- Custom sport wheel
- Special tournament instrumentation includes dual speedometers, electric fuel gauge
- Built-in 27 gallon fuel system
- Bow eye and ski eyes
- Fastback transom with teak boarding steps, grab rails
- Running lights with removable stern light
- Positive foam flotation
- B.I.A. certified
- Dual cable steering
- Large ski locker
- Lockable glove box
- Twin position ski tow pylon
- Forward storage pocket
- Swim platform
- Special accent graphics
- Stainless steel mirror

OPTIONS:

- Custom mooring cover

PERFORMANCE:

- Optimum performance range 140-200 h.p.
- Normal speed range - 175 h.p.: 50-52 mph/80-83 kph



***INTIMIDATOR®**

The ultimate in high-performance stern drives. Designed in unmistakable Carlson tradition, reflecting a proud and successful racing heritage. The Intimidator is a boat that waits to be challenged. Punch the throttle, listen for the powerful crescendo of wet exhaust stacks and take control of a machine with performance and efficiency. With 260 available horsepower, this competition-styled 20-foot vee bottom won't stand for following someone else's wake.

LIST PRICE		SALE PRICE
_____	Merc 260	_____
_____	Trailer	_____
_____	Accessories	_____
_____	Package Price	_____

* Design Patent Pending

INTIMIDATOR

SPECIFICATIONS:

LOA	20' 3½" - 6.2 m
Beam	87½" - 2.2 m
Transom width	85" - 2.1 m
Depth	37-5/8" - 93.9 cm
Approximate weight	1400 lbs. - 635 kg
Maximum load	1050 lbs. - 476 kg
Glastron trailer	C-20
Colors	Metaflake Persian orange with buff/orange int.

STANDARD FEATURES:

- Hand-laid fiberglass construction
- Two deep foam-padded swivel bucket seats
- Padded stern bench with ski storage beneath
- Center console with lockable storage, built-in drink-holders, courtesy light
- Grab bar
- Deep plush marine carpet
- Custom sport wheel
- Power steering
- Custom instrumentation: speedometer, tachometer, engine temp. gauge, oil pressure gauge, electric fuel gauge, voltmeter, trim indicator guage
- In-handle trim control
- Built-in 27-gallon fuel system
- Bow eye and ski eyes
- Fastback transom with teak boarding steps
- Custom dual polished aluminum wet exhaust stacks
- Running lights with removable stern light
- Bilge pump and blower
- Custom Intimidator accent graphics
- Stainless steel cleaver propeller
- Foam flotation
- B.I.A. certified

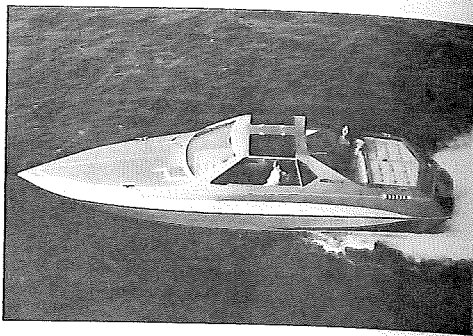
OPTIONS:

- Contour tinted plexiglass windscreen
- Custom mooring cover
- Exhaust silencers (available where required)

PERFORMANCE:

Normal speed range - Merc 260: 62-66 mph/
100-106 kph

SCIMITAR



* SCIMITAR®

The Scimitar - a special boat intended for special people. From the proud and bold bow to the sculptured swim step, there's 23 feet of beauty and grace, creating a glimpse of the future. Position yourself in the six-way power seat behind an innovatively designed console with digital electric clock and accessory switch controls overhead. Open the sleekly-contoured roof panels, switch on the AM/FM stereo radio and tape player, and enjoy the uncompromised comfort of elegance.

But the full pleasure of the Scimitar cannot be experienced until the 260 h.p. stern-drive propulsion system is summoned into action. On plane, with hull and engine performing in perfect harmony, the future becomes now.

LIST PRICE		SALE PRICE
_____	Merc 260	_____
_____	Trailer	_____
_____	Accessories	_____

* Design Patent Pending

78

SPECIFICATIONS:

LOA	23' ½" - 7.1 m
Beam	91-3/8" - 2.3 m
Transom width	85½" - 2.1 m
Depth	62¼" - 1.6 m
Approximate weight	1850 lbs. - 839 kg
Maximum load	1500 lbs. - 687 kg
Glastron trailer	C-23
Colors	Metalflake stratus blue Metalflake Persian orange

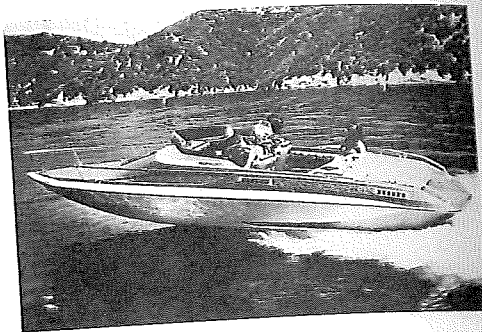
STANDARD FEATURES:

- Hand-laid fiberglass construction
- Padded stern lounge with storage beneath
- Custom molded dash with command instrumentation: speedometer, tachometer, electric fuel gauge, oil pressure gauge, engine temp. gauge, voltmeter
- Storage tray built into dash
- Convenient drink holders
- Wrap-around tinted safety glass windshield
- Tinted acrylic roof sections for T-top
- T-top storage compartment
- Custom sport wheel
- Overhead accessory switch control with lights
- Digital electric clock overhead
- Electric windshield wiper
- Bucket seats forward with 6-way power seat for driver, port seat swivels
- Padded stern bench with storage beneath
- Ski locker in bow
- Deep plush marine carpet
- Teak step pads
- AM/FM stereo radio and cassette tape player
- Built-in 36 gallon fuel system
- International lighting
- Automatic bilge pump
- Sculptured swim steps built into stern
- In-handle trim control
- Bilge blower
- Cockpit courtesy lights
- Stainless steel propeller
- B.I.A. certified
- Power steering
- Bow eye and ski eyes
- Foam flotation
- Custom mooring cover

PERFORMANCE:

Normal speed range - Merc 260: 53-57 mph/85-91 kph

79



***CV - 23 I/O**

A sleek glittering beauty with the quiet response of a sterndrive. There's plenty of power to push this vee bottom at speeds exceeding 50 mph. Stop and there's all the conveniences a person could want. The Carlson 23 cuddy sportboat is a personal performance boat that is like no other in the field.

LIST PRICE		SALE PRICE
_____	Merc 260	_____
_____	Trailer	_____
_____	Accessories	_____
Package Price _____		

* Design Patent Pending

CV - 23 I/O

SPECIFICATIONS:

LOA	23' 4 1/4" - 7.1 m
Beam	91 1/2" - 2.3 m
Transom width	85" - 2.2 m
Depth	50" - 1.3 m
Approximate weight	1400 lbs. - 636 kg
Maximum load	1200 lbs. - 545 kg
Glastron trailer	C-23
Colors	Metalflake emerald mist Metalflake Persian orange

STANDARD FEATURES:

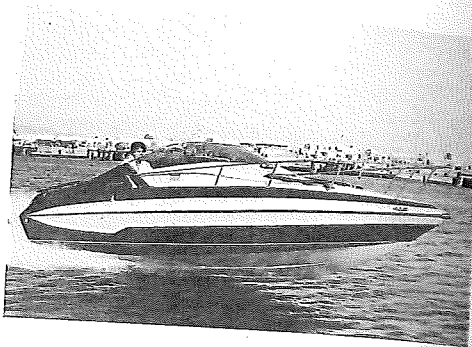
- Hand-laid fiberglass construction
- Padded stern sun lounge w/deep storage beneath
- Padded side storage trays
- Storage tray built into dash
- Smoked plexiglass windscreen
- Stainless steel bow and stern rails
- Deep plush marine carpet
- Custom instrumentation includes speedometer, tachometer, electric fuel gauge, oil pressure gauge, engine temp. gauge, voltmeter
- Built-in 50 gallon fuel system
- Spacious daycruiser cabin with white fur ceiling, teak trim, luxurious seating converts to total sleep area, privacy curtain
- Inside latching tinted plexiglass hatch to bow
- Sculptured swim platform built into stern
- Running lights with removable stern light
- Two deep foam-padded swivel bucket seats
- Removable 48 qt. ice chest stores under stern sun lounge
- Padded stern bench with ski storage beneath
- Teak step pads
- Automatic bilge pump
- Cockpit courtesy light
- Power steering
- Foam flotation
- Custom sport wheel
- Bilge blower
- Bow eye and ski eyes
- Stainless steel prop
- B.I.A. certified

OPTIONS:

- Custom mooring cover

PERFORMANCE:

Normal speed range: Merc 260 — 52-55 mph/83-88 kph



CV - 27

Unique! Yes, this boat was designed to be like no other on the market. Twenty-seven feet of sleek, graceful styling with unmatched twin engine performance. A personal cruising Carlson, unique in styling and features. It's a cruiser! It's a performance boat! It's an expression of you and your desire for the best.

LIST PRICE

SALE PRICE

_____	Twin Merc 260	_____
_____	Twin Merc 485	_____
_____	Twin OMC V-6 Shorty	_____
_____	Trailer	_____
_____	Accessories	_____
Package Price w/ _____	H.P. \$ _____	

SPECIFICATIONS:

LOA	27' 3/4" - 8.3 m
Beam	94" - 2.4 m
Transom width	92" - 2.3 m
Depth	68 1/4" - 1.7 m
Approximate weight	2925 lbs. - 1326 kg
Maximum load	2000 lbs. - 907 kg
Glastron trailer	C-27
Colors	Midwatch blue w/white Metalflake gold w/yellow

STANDARD FEATURES:

- Hand-laid fiberglass construction
- Padded stern bench with ski storage beneath
- Deep padded side storage trays
- Deep ski locker built-in under floor
- Wraparound tinted plexiglass abrasion-resistant windshield
- Power steering (where applicable)
- Custom instrumentation
- Luxurious cabin w/vee-berths forward, teak vanity built into bow, mirror, sliding doors, overhead cabin lights fore and aft, two 3-way reading lights
- Enclosed head w/Handi-head, sink, mirror, storage, cold water shower, window
- Tinted plexiglass hatch for ventilation and access to bow
- Two adjustable pedestal swivel bucket seats
- Padded stern sun lounge covers engine compartment
- Built-in 100 gallon fuel system
- Dinnette table converts from cabin to cockpit use
- Compact galley w/2-burner alcohol stove, cutting board, S/S sink, water system, ice box, storage
- Radio locker under console S/S chrome-on brass hardware
- Storage cabinets
- Teak boarding pads
- Starboard windshield wiper
- S/S helm wheel
- S/S props
- S/S bow and ski eyes
- Lockable door to cabin
- Binnacle mounted compass
- International lighting
- Rope and anchor locker
- Automatic bilge pump
- Teak taffrail
- Bilge blower
- Custom mooring cover
- B.I.A. certified
- Cockpit courtesy light

OPTIONS:

- 110 v dockside power with shore cable
- Full canvas top, side curtains and aft curtains
- 110-12 volt refrigerator
- Hydraulic boat levelers
- Electric stove

PERFORMANCE:

Normal speed range: Twin Merc 260 - 57-61 mph/
92-98 kph

MODEL: Mercruiser 470
 Horsepower 170
 Cylinders 4
 Cubic Inches 224
 Compression Ratio 8.8:1
 Max. Recommended RPM 3800 - 4200
 Circuit Breaker 40 amp thermal
 Fuel Regular
 Lower Unit Gear Ratio 1.84:1
 Tilt Power
 Trim Power
 Length 36-3/8"
 Height 20 1/4" (above crankshaft $\frac{1}{2}$)
 28 3/4" (overall)
 Width 23-5/8"
 Weight 750 lbs. (pkg. weight)

MODEL: Mercruiser 485
 Horsepower 185
 Cylinders 4
 Cubic Inches 224
 Compression Ratio 8.8:1
 Maximum Rec. RPM 3800 - 4200
 Circuit Breaker 40 amp thermal
 Fuel Regular
 Lower Unit Gear Ratio 1.84:1
 Tilt Power
 Trim Power
 Length 38.19"
 Width 22.68"
 Height 28.26"
 Weight 727 lbs.

MODEL: Mercury 260 w/Power Steering
 Horsepower 260
 Cylinders 8
 Cubic Inches 350
 Compression Ratio 8.7:1
 Max. Recommended RPM 4200 - 4600
 Circuit Breaker 40 amp thermal
 Fuel Regular (94 oct. research)
 Lower Unit Gear Ratio 1.50:1
 Tilt Power
 Trim Power
 Length 36-17/32"
 Width 29"
 Height 19-3/8" (above crankshaft $\frac{1}{2}$)
 28-3/8" (overall)
 Weight 1000 lbs. (pkg. weight)

84

MODEL: Mercury 120
 Horsepower 120
 Cylinders 4
 Cubic Inches 153
 Compression Ratio 8.5:1
 Max. Recommended RPM 3900 - 4300
 Circuit Breaker 40 amp Thermal
 Fuel Regular (93 oct. research)
 (88 oct. anti-knock Index)
 Lower Unit Gear Ratio 1.98:1
 Tilt Power
 Trim Power
 Length 30-27/32"
 Width 21-5/8"
 Height 20" (above crankshaft $\frac{1}{2}$)
 28 1/2" (overall)
 Weight 600 lbs.

MODEL: Mercury 140
 Horsepower 140
 Cylinders 4
 Cubic Inches 181
 Compression Ratio 8.5:1
 Max. Recommended RPM 4200 - 4600
 Circuit Breaker 40 amp Thermal
 Fuel Regular (93 oct. research)
 (88 oct. anti-knock Index)
 Lower Unit Gear Ratio 1.98:1
 Tilt Power
 Trim Power
 Length 30-27/32"
 Width 21-3/16"
 Height 20" (above crankshaft $\frac{1}{2}$)
 28 1/2" (overall)
 Weight 625 lbs. (pkg. weight)

MODEL: Mercury 228 w/Power Steering
 Horsepower 228
 Cylinders 8
 Cubic Inches 305
 Compression Ratio 8.5:1
 Max. Recommended RPM 4200 - 4600
 Circuit Breaker 40 amp Thermal
 Fuel Regular (94 oct. research)
 (89 oct. anti-knock Index)
 Lower Unit Gear Ratio 1.50:1
 Tilt Power
 Trim Power
 Length 36-3/16"
 Width 29"
 Height 19-3/8" (above crankshaft $\frac{1}{2}$)
 28-3/8" (overall)
 Weight 975 lbs. (pkg. weight)

MODEL: Mercury 228 w/Power Steering
 Horsepower 228
 Cylinders 8
 Cubic Inches 305
 Compression Ratio 8.5:1
 Max. Recommended RPM 4200 - 4600
 Circuit Breaker 40 amp Thermal
 Fuel Regular (94 oct. research)
 (89 oct. anti-knock Index)
 Lower Unit Gear Ratio 1.50:1
 Tilt Power
 Trim Power
 Length 36-3/16"
 Width 29"
 Height 19-3/8" (above crankshaft $\frac{1}{2}$)
 28-3/8" (overall)
 Weight 975 lbs. (pkg. weight)

MODEL: OMC 260 Selectrim w/
 Horsepower 260 Power Steering
 Cylinders 8
 Cubic Inches 350
 Compression Ratio 8.7:1
 Max. Recommended RPM 4000 - 4400
 Circuit breaker In-line fuse
 Fuel Regular (94 oct. research)
 Lower unit gear ratio 1.41:1
 Tilt Power
 Trim Power
 Length 37½"
 Width 27¼"
 Height 30-3/16" (overall)
 20¾" (above crankshaft^(L))
 Weight 950 lbs.

MODEL: OMC 120 Selectrim
 Horsepower 120
 Cylinders 4
 Cubic Inches 153
 Compression Ratio 8.5:1
 Max. Recommended RPM 4000 - 4400
 Circuit Breaker Fusible link
 Fuel Regular
 Lower Unit Gear Ratio 1.61:1
 Tilt Power
 Trim Power
 Length 33-5/8"
 Width 24"
 Height 19½" (above crankshaft^(L))
 27" (overall)
 Weight 650 lbs.

MODEL: OMC 140 Selectrim
 Horsepower 140
 Cylinders 4
 Cubic Inches 181
 Compression Ratio 8.5:1
 Max. Recommended RPM 4000 - 4400
 Circuit Breaker Fusible link
 Fuel Regular (93 oct. research)
 Lower Unit Gear Ratio 1.61:1
 Tilt Power
 Trim Power
 Length 33-5/8"
 Width 24"
 Height 20-9/16" (above crankshaft^(L))
 28-3/16" (overall)
 Weight 675 lbs.

MODEL: OMC V-6
 Horsepower 170
 Cylinders 6
 Cubic Inches 229
 Compression Ratio 8.5:1
 Max. Recommended RPM 4200 - 4600
 Circuit Breaker Fusible Link
 Fuel Regular (89 oct. research)
 Lower unit gear ratio Power
 Tilt Power
 Trim 31.81"
 Length 24"
 Width 27.68"
 Height 710 lbs.
 Weight

GLASTRON CUSTOM TRAILERS

Each Glastron Custom Aluminum Trailer is color coordinated to the boat model for which it is manufactured. The aluminum frame is finished in the predominant hull color, with striping and carpeting coordinated to deck color.

MODEL GA-15 (Fits Glastron GX-150, SSV-151)

Capacity	1720 lbs.
Overall length	16' 10"
Overall width	72½"
Whitewall tire size	B-78-13
Brakes	Optional
Hitch class	2
Shipping weight	455 lbs.

MODEL CA-16 (Fits Glastron/Carlson C-500, C-512)

Capacity	1720 lbs.
Overall length	16' 10"
Overall width	72½"
Whitewall tire size	B-78-13
Brakes	Optional
Hitch class	2
Shipping weight	455 lbs.

MODEL GA-16 (Fits Glastron HPV-160, HPV-165, SSV-163, SSV-164, SSV-167, SSV-168, SSV-169)

Capacity	1720 lbs.
Overall length	16' 10"
Overall width	72½"
Whitewall tire size	B-78-13
Brakes	Optional
Hitch class	2
Shipping weight	455 lbs.

MODEL H-17 (Fits Glastron HPV-175)

Capacity	2800 lbs.
Overall Length	19' 2"
Overall Width	94"
Whitewall Tire Size	H-78-14
Brakes	Optional
Hitch Class	2
Shipping Weight	625 lbs.

MODEL G-17 (Fits Glastron SSV-173, SSV-176, SSV-177)

Capacity	2700 lbs.
Overall Length	19' 6"
Overall Width	94"
Whitewall Tire Size	H-78-14
Brakes	Optional
Hitch Class	2
Shipping Weight	625 lbs.

MODEL C-17 (Fits Carlson C-537)

Capacity	2700 lbs.
Overall Length	19'
Overall Width	94"
Whitewall Tire Size	H-78-14
Brakes	Optional
Hitch class	2
Shipping Weight	625 lbs.

MODEL C-18 (Fits Glastron/Carlson CVX-18, CVZ-18)

Capacity	2700 lbs.
Overall Length	20' 6"
Overall Width	94"
Whitewall Tire Size	H-78-14
Brakes	Optional
Hitch Class	2
Shipping Weight	640 lbs.

MODEL C-19
(Fits Glastron/Carlson CVZ-19)

Capacity	2700 lbs.
Overall Length	20' 6"
Overall Width	94"
Whitewall Tire Size	H-78-14
Brakes	Optional
Hitch Class	2
Shipping Weight	625 lbs.

MODEL G-19
(Fits Glastron V-192, V-195)

Capacity	2700 lbs.
Overall Length	20' 6"
Overall Width	94"
Whitewall Tire Size	H-78-14
Brakes	Optional
Hitch Class	2
Shipping Weight	635 lbs.

MODEL C-20
(Fits Glastron/Carlson Intimidator, Ski Machine)

Capacity	2700 lbs.
Overall Length	21'
Overall Width	94"
Whitewall Tire Size	H-78-14
Brakes	Optional
Hitch Class	2
Shipping Weight	645 lbs.

MODEL C-23
(Fits Glastron/Carlson CV-23 I/O, Scimitar)

Capacity	3500 lbs.
Overall Length	24' 2"
Overall Width	96"
Whitewall Tire Size	E-78-14
Brakes	Standard
Hitch Class	3
Shipping Weight	900 lbs.

MODEL G-21
(Fits Glastron V-216, V-217)

Capacity	3500 lbs.
Overall Length	21' 7"
Overall Width	96"
Whitewall Tire Size	E-78-14
Brakes	Standard
Hitch Class	3
Shipping Weight	940 lbs.

MODEL G-22
(Fits Glastron V-225)

Capacity	3500 lbs.
Overall Length	24'
Overall Width	96"
Whitewall Tire Size	E-78-14
Brakes	Standard
Hitch Class	3
Shipping Weight	970 lbs.

MODEL G-24
(Fits Glastron V-243)

Capacity	5000 lbs.
Overall Length	25' 9"
Overall Width	96"
Whitewall Tire Size	H-78-14
Brakes	Standard
Hitch Class	3
Shipping Weight	990 lbs.

MODEL G-26
(Fits Glastron V-266)

Capacity	6300 lbs.
Overall Length	28' 6"
Overall Width	96"
Whitewall Tire Size	E-78-14
Brakes	Standard
Hitch Class	3
Shipping Weight	1400 lbs.

MODEL C-27
(Fits Glastron/Carlson CV-27)

Capacity	6300 lbs.
Overall Length	27' 5"
Overall Width	96"
Whitewall Tire Size	E-78-14
Brakes	Standard
Hitch Class	3
Shipping Weight	1400 lbs.

MODEL S-19
(Fits Glastron SX-190, SSV-194)

Capacity	2700 lbs
Overall Length	20' 6"
Overall Width	94"
Whitewall Tire Size	H-78-14
Brakes	Optional
Hitch Class	2
Shipping Weight	635 lbs.

Available options and accessories for Glastron Custom Aluminum Trailers include: Mag Wheels, Spare Tire and Bracket, Hydraulic Surge Brakes for Single Axle (standard on Dual Axle) and Touch-up Paint Kit.

Glastron

Due to continuing improvements and changes in product features and options, Glastron does not guarantee the availability of all product features and options as displayed in this catalog, and reserves the right to change specifications and prices without notice.

THIS BOOK IS FOR GLASTRON SALESMEN'S REFERENCE ONLY AND IS NOT TO BE GIVEN OUT OR REPRODUCED.

GLASTRON BOAT COMPANY

A Conroy Company

9108 Reid Drive

P.O. Box 9447

Austin, Texas 78766

1980 Glastron Boat Co.

Printed in U.S.A.