

Glastron[®]

**FRONT
RUNNERS
79**

Salesman's Handbook

Due to continuing improvements and changes in product features and options, Glastron does not guarantee the availability of all product features and options as displayed in this catalog, and reserves the right to change specifications and prices without notice.

THIS BOOK IS FOR GLASTRON SALESMEN'S REFERENCE ONLY AND IS NOT TO BE GIVEN OUT OR REPRODUCED.

GLASTRON BOAT CO. AUSTIN, TEXAS

LIMITED WARRANTY

Glastron Boat Company (Glastron) warrants each new Glastron and Glastron/Carlson boat to the original purchaser only to be free from defects in material and workmanship under normal use or service for one (1) year from date of retail purchase from an authorized Glastron Dealer according to the following terms:

Any part of the boat manufactured by Glastron and found in the reasonable judgment of Glastron to be defective in material or workmanship will be repaired or replaced at Glastron's option by an authorized Glastron dealer without charge for parts and labor.

The boat including any defective part must be returned to an authorized Glastron dealer within the warranty period. The expense of returning the boat to the dealer and the expense of returning the boat back to the owner will be paid for by the owner. Proof of purchase will be required by the authorized Glastron dealer to substantiate any warranty claim. In addition all warranty work must be performed by an authorized Glastron dealer.

WARRANTY DOES NOT COVER:

This warranty does not cover any boat that has been subject to misuse, neglect, negligence, or accident, or operated for racing purposes, or operated in any way contrary to the operating or maintenance instructions as specified in the Glastron Owner's Operator's Manual. The warranty does not cover any boat that has been altered or modified so as to adversely affect the boat's operation, performance or durability or that has been altered or modified so as to change the intended use of the boat. In addition, the warranty does not extend to repairs made necessary by normal wear, or by the use of parts or accessories which in the reasonable judgment of Glastron are either incompatible with the boat or adversely affect its operation, performance or durability.

IN ADDITION:

This warranty does not cover: (1) engines, (other than Glastron Engines), outdrives, controls, batteries, or other equipment or accessories, carrying their own individual warranties (appropriate adjustments to them provided by their respective manufacturers); (2) machinery, equipment and accessories not factory installed; (3) windshield breakage; (4) gelcoat maintenance and gelcoat crazing; (5) upholstery damage such as puncturing, or by solvents or cleaners; (6) any Glastron boat which has been overpowered or overloaded (in excess of horsepower and/or capacity as specified on capacity plate on each Glastron boat); (7) any Glastron used for commercial purposes. Upon request, Glastron may provide special written warranty for specific commercial applications.

Glastron boats contain flotation material; however, there is no boat that is unsinkable. Therefore personal flotation devices should be carried for each passenger in accordance with U.S. Coast Guard requirements.

When Glastron builds a boat, it stays built. This certainly isn't the easiest or cheapest approach to boat construction, but is one which Glastron feels creates satisfied customers year after year.

Glastron has created this dealer handbook which will provide you, the dealer, with information pertinent to each boat in the Glastron and Carlson model line. Its size is such that it can be carried with you on the showroom floor and referred to should specific questions come up pertaining to specifications, features or safety standards.

While each Glastron boat may be constructed in a different manner to suit its design, use and capability, there are many items which remain standard throughout the Glastron line.

HAND LAY-UP CONSTRUCTION

Hand lay-up construction is the primary method of manufacture in all Glastron and Glastron/Carlson boats. In the hand lay-up method, three basic new materials, fiberglass mat, fiberglass roving and resin are used in the basic lay-up of most hulls and decks. In strength and construction the hand lay-up method can be favorably compared to plywood lamination. Plywood obtains its strength and resilience through its continuous layers, one bonded to the other. The same principle applies in the hand lay-up method of building a fiberglass boat.

It should be noted that certain parts, due to their complex design, lend themselves to the chopper method of construction to prevent excessive overlaps and heat shrinkage marks. At the present time, Glastron is using this technique on certain small parts and in certain complex liner/deck model boats.

Each Glastron boat receives a different hull lay-up, depending upon its size and horsepower requirements. These lay-ups may range from two layers of 1½ oz. mat and one layer of 24 oz. roving in small boats up to four 1½ oz. mats and two 24 oz. rovings in larger models.

An explanation of the weight of fiberglass materials is as follows:

1½ oz. mat weighs 1½ oz. per square foot

24 oz. of woven roving weighs 24 oz. per square yd.

In each Glastron model, the keel areas of fiberglass are overlapped, thereby providing a double thickness in these areas of impact.

GLASTRON STRINGER SYSTEM

While Glastron provides foam flotation in each of its boats, up to 24', we do not feel that foam should be used as a structural support in the hull. Therefore, most Glastrons manufactured contain a rigid stringer system to support the hull and maintain its uniform shape. These stringers are encapsulated in fiberglass and bonded to the hull to assure a rigid single structure. The floor is then fastened in place to the stringer system. In Glastron's new series of salt water fishing boats, a unique fiberglass liner system will be utilized which will be independent of the structural system to eliminate stress and crazing.

FUEL SYSTEMS

All Glastron fuel systems comply with current Boating Industry Association specifications. All Glastron fuel tanks are pressure checked to eliminate the possibility of pinhole leaks and checked again when the fuel lines are attached to assure that there are no leaks around the fittings. Glastron uses copper lines and flared fittings in its fuel system. In addition, each permanent fuel tank installed includes anti-siphon protection to eliminate the possibility of unwanted fuel spillage.

STEERING SYSTEMS

All Glastron boats are factory equipped with mechanical steering systems. Mechanical steering is a preferable, more positive form of steering for today's high horsepower outboard and stern-drive engines.

SEAT AND SEAT VINYL

Glastron manufactures almost all its own seats for installation in Glastron Boats. Wood used in Glastron seats, as well as all exposed wood in the boats is dipped in wood preservative in order to provide maximum protection against the possibility of delamination and dry rot. All plywood is bonded with waterproof exterior grade glue. Joints are glued and T-nuts are used extensively. Glastron vinyls used in seats and other areas of the boats are the highest standard in the industry. These are 32 oz. marine grade vinyls which have been checked in Glastron's own weatherometer to determine their durability under ultraviolet light and weathering. All Glastron seats, except for certain fishing boat and sport seat models, are back-to-back sleeper seats which may be extended for the convenience of the owner.

GLASTRON GELCOATS

Glastron gelcoats are one of the added features in creating long lasting value. A new formula gelcoat was developed jointly by Glastron and its resin and pigment suppliers. This gelcoat is applied at an average thickness of 20 ml. - 22 ml. (wet), 16 ml. - 18 ml. (dry) to create a bright, durable finish. Tests in Glastron's weatherometer indicate that the new finish has a much improved resistance to fading, chalking, crazing and blistering.

FOAM FLOTATION

All boats manufactured by Glastron comply with the U.S. Coast Guard regulations and B.I.A. standards for flotation. All 1979 Glastrons under 20 feet have level flotation. The 20 foot to 24 foot models have basic flotation. Glastron boats over 24 feet do not have flotation.

B.I.A. CERTIFICATION

All boats manufactured by Glastron are certified by the Boating Industry Association as having met current established standards in the areas of fuel and electrical systems, compartment ventilation, steering, lighting, load capacities, flotation and horsepower limitations. All Glastron boats are manufactured in compliance with USCG Federal Regulations.

Many questions have arisen concerning B.I.A. certification of horsepower for outboards. The U.S. Coast Guard and many states now use this certification as a standard for horsepower limitation on all manufacturers' boats. This horsepower certification is arrived at in the following manner for Glastron boats. NOTE: Different methods may be used for smaller boats having no remote steering of different hull forms.

- (1) Multiply the length of the boat in feet and tenths of feet times the maximum transom width in feet and tenths of feet.
- (2) Round off the previous answer down to the nearest whole number and multiply by two.
- (3) Subtract 90.
- (4) If the number is not a multiple of five, raise it to the next multiple of five.

EXAMPLE:

Glastron SSV-176 - h.p. calculation

Length	17.10
Transom Width	<u>x6.62</u>
	113.20
Round off to 113	
Multiply by 2	$113 \times 2 = 226$
Subtract 90	$226 - 90 = 136$
Round off to next higher multiple of 5	= 140 h.p.

This will provide you with the maximum B.I.A. certified and U.S.C.G. horsepower rating which can be established for a specific model of boat.

Glastron does not recommend overpowering, and to do so will result in voiding the warranty.

GLASTRON STANDARD EQUIPMENT

Glastron boats feature many items as standard equipment which serve to increase the customer's appreciation and enjoyment of his boat.

- (1) Hand lay-up of hull construction for superior performance and high impact strength.
- (2) Factory installed vinyl softtops on most models.
- (3) Ski eyes on all Glastron outboards and stern-drives.
- (4) Deluxe sport steering wheel in all out-boards.
- (5) Lockable glove compartments in most models.
- (6) Exclusive Glastron steering wheel in most stern-drives and stainless steel in all cruisers.
- (7) Foam flotation in boats under 24'
- (8) Certification for fuel and electrical systems, compartment ventilation, steering, lighting, load capacities, flotation, and horsepower limitations.
- (9) Mechanical steering.
- (10) Cleats.
- (11) All stern-drives have bilge pumps and bilge blowers.
- (12) All stern-drives feature the Glastron "Command Console" instrumentation panel.
- (13) Speedometers and electric horns on all stern-drives.
- (14) Most Glastron windshields, except for wrap-around style, are tempered glass for durability and ease of cleaning — except walk-thru vents and side vents.

GLASTRON ENGINE WEIGHT CHART

All Glastron stern drives have been shown without engine weight. To arrive at the total boat weight with engine installed, refer to boat weight on individual model specification page and add applicable engine weight.

Keep in mind when arriving at trailer capacity that this weight does not take into consideration additional weight loads for fuel, gear, anchors, battery, etc., which the trailer will have to support.

<u>Engine Model</u>	<u>Weight (lbs.)</u>
Merc 120	600
Merc 140	625
Merc 165	750
Merc 470	750
Merc 898*	975
Merc 228*	975
Merc 260*	1220
OMC 120	650
OMC 140	675
OMC 185	900
OMC 200	900
OMC 230	900
OMC 260*	950
Volvo 140	625
Volvo 200	900
Twin Me 140*	1300 (est.)
Twin Me 470*	1550 (est.)
Twin Me 898*	1875 (est.)
Twin Me 260*	1950 (est.)
Twin Volvo 140	1225 (est.)
Twin OMC 200*	1875 (est.)

* Power Steering Included

Weights may vary 25 pounds.

APPROXIMATE SPEED

Approximate speed ranges are based on actual speed checks on a ¼ mile course. Boats are tested with various props and under varying weight/load conditions to determine the recommended prop for optimum operating performance. Keep in mind that optimum performance provides the best performance through all rpm ranges and does not necessarily provide the highest peak speed performance. Under normal approximate speed range indicated for each engine option.

PROP RECOMMENDATIONS

Glastron has recommended the prop which, in our opinion, provides the best all-around performance for the stern-drive engine-boat combination. Please keep in mind that altitude, load conditions, temperature, humidity, tuning, etc., can all affect a given boat's performance. Therefore performance may vary dependent upon conditions.

DEFINITIONS OF BOAT MEASUREMENTS

Length Overall (L.O.A.) — Distance along the centerline from the tip of the bow to the aft-most part of the hull.

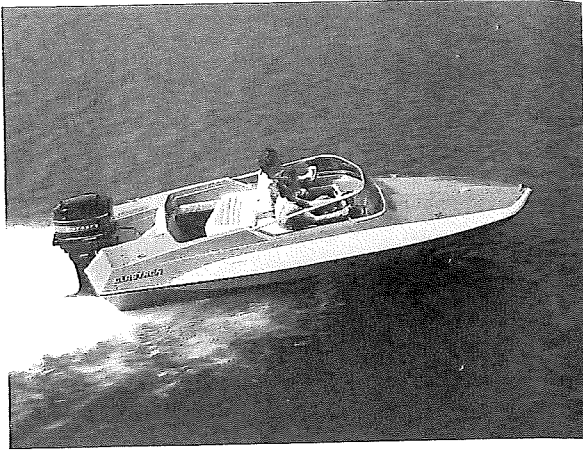
Gunwale Length — Distance along the bumper strip from the corner of the transom to the tip of the bow.

Maximum Beam — Maximum width of the boat.

Transom Width — Maximum width of transom.

Maximum Depth — Vertical distance from lowest point of keel to highest point of boat, excluding windshields, lights and other removable components.

Transom — Vertical distance at boat's centerline from the keel/transom intersection to the transom top.



GT-150

The GT-150, a young-spirited, low-profile outboard that looks like it's moving, even when it's not. For skiing and flat out speed with style, you can't beat the GT-150.

PACKAGE PRICE

Boat
 Motor _____ H.P.
 Trailer
 Accessories
 Total List
 Sale Price

LIST

SPECIFICATIONS:

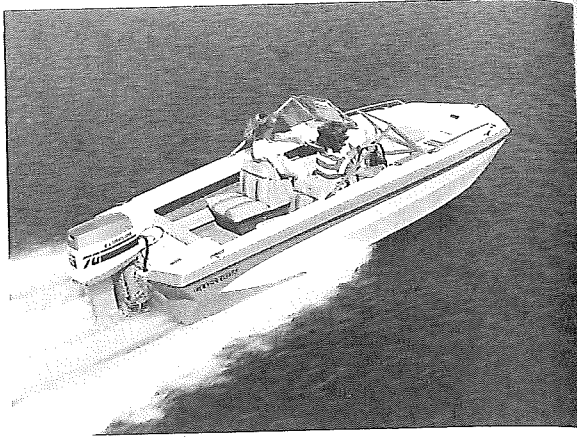
LOA	15' 1 1/2" - 4.6m
Gunwale Length	15' 7 1/2" - 4.7 m
Beam	77" - 2.0m
Motor Shaft Length	20" - 50.8 cm
Transom Width	71 1/4" - 1.8m
Depth	32 1/2" - .8m
Approximate Weight	625 lbs. - 283 kg
Maximum Load	1150 lbs. - 522 kg
Rating	90 h.p.
Steering	Mechanical
Colors	Tutone Metalflake gold and yellow

STANDARD FEATURES:

- Hand-laid fiberglass construction
- Strike-tuned vee hull
- Sleek wrap-around plexiglass windshield
- Glastron 32-oz. marine grade vinyl
- Polypropylene cut pile carpet
- Sport steering wheel
- BIA Certified
- Navigational Lights
- Stainless bow & ski eyes
- Quality marine hardware
- Enclosed front bow compartment for skis and gear
- Fuel tank compartment with button-down curtain
- Plush-pleated back to back foam padded bucket seats
- Positive foam flotation

PERFORMANCE

	50-90 h.p.
	90 h.p. - 40-42 mph 64-67 kph
Optimum performance range	70 h.p. - 37-39 mph 59-63 kph
Normal speed range	80 h.p. - 40-42 mph 64-67 kph



T-159

Popular all-family design, the T-159 sportster combines tri-hull stability and performance with big value. It's roomy, comfortable, smooth-handling, designed for the first-time boating family.

PACKAGE PRICE _____ LIST

Boat	_____
Motor _____ H.P.	_____
Trailer	_____
Accessories	_____
Total List	_____
Sale Price	

SPECIFICATIONS:

LOA	15' 8 1/4" - 4.8m
Gunwale length	17' 2 1/2" - 5.3 m
Beam	74 1/4" - 1.9m
Motor shaft length	20" - 50.8 cm
Transom width	71" - 1.8m
Depth	36 1/4" - 92.1 cm
Approximate weight	725 lbs. - 329 kg
Maximum load	1350 lbs. - 612 kg
Rating	100 h.p.
Steering	Mechanical
Colors	Tutone blue and white/ blue interior

STANDARD FEATURES:

- Hand-laid fiberglass construction
- Functional walk-through tempered glass windshield with plexiglass center and side panes
- Convertible seating
- Glastron 32-oz. marine grade vinyl
- Polypropylene cut pile carpeting
- Bow locker
- Under seat storage compartment
- Side storage trays
- Bow seating - deep foam cushioned
- Aluminum bow rails
- Chrome plated hardware
- Deluxe sport wheel
- BIA Certified
- Navigation lights
- S/S bow and ski eyes
- Dash storage tray
- Pleated vinyl-covered side storage trays
- Fuel tank compartment with button down curtain
- Positive foam flotation

PERFORMANCE:

Optimum performance range	50-100 h.p.
Normal speed range	85 h.p. - 37-41 mph/59-66 kph
	70 h.p. - 33-35 mph/53-56 kph

OPTIONS:

- Side/stern canvas
- Tonneau bow cover
- Softtop w/boot cover



V-162

The V-162, a closed bow family favorite with smooth riding deep vee hull. The spacious cockpit seats 6 with removable stern seats for extra space. Great for skiing, cruising or all family fun.

PACKAGE PRICE

LIST

Boat	_____
Motor _____ H.P.	_____
Trailer	_____
Accessories	_____
Total List	_____
Sale Price	_____

V-162

SPECIFICATIONS:

LOA	15' 8 1/2" - 4.8m
Gunwale length	16' 10" - 5.1 m
Beam	76 3/4" - 1.95m
Motor shaft length	20" - 50.8 cm
Transom width	72" - 1.8m
Depth	34 1/2" - 87.6 cm
Approximate weight	750 lbs. - 340 kg
Maximum load	1150 lbs. - 522 kg
Rating	100 h.p.
Steering	Mechanical
Colors	Tutone orange and white w/white interior

STANDARD FEATURES:

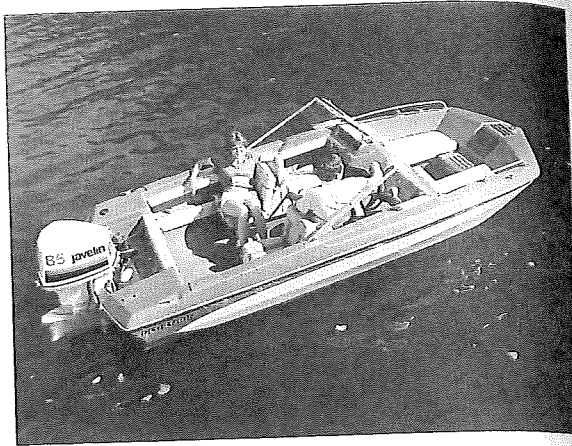
- Hand-laid fiberglass construction
- Functional walk-through tempered glass windshield with plexiglass center and side panes
- Easy-mount convertible top w/boot cover
- Convertible seating
- Glastron 32-oz. marine grade vinyl
- Polypropylene cut pile carpet
- Underseat storage compartment
- Side storage trays
- Dash storage tray
- Chrome plated hardware
- BIA Certified
- Navigation lights
- S/S ski eyes and bow eye
- Cockpit courtesy lighting
- Removable stern jump seats
- Teak step pads
- Deluxe sport wheel
- Positive foam flotation

PERFORMANCE:

Optimum performance range	50 - 100 h.p.
Normal speed range	90 - 100 h.p. - 40 - 42 mph 64 - 67 kph

OPTIONS:

Side/stern canvas	85 h.p. - 37 - 39 mph/59 - 63 kph
-------------------	-----------------------------------



T-166 SPORTSTER XL

A boat so fast, so agile, so sporting, we couldn't call her anything, but sportster. Tri-hull speed and performance with precise handling in all conditions. Luxurious interior and sleek functional styling make the 166 XL one of the best selling tri-hulls in boating.

PACKAGE PRICE _____	LIST
Boat _____	_____
Motor _____ H.P.	_____
Trailer _____	_____
Accessories _____	_____
Total List _____	_____
Sale Price _____	

SPECIFICATIONS:

LOA	15' 8 1/4" - 4.8m
Gunwale length	17' 2 1/2" - 5.3 m
Beam	74 1/4" - 1.9m
Motor shaft length	20" - 50.8 cm
Transom width	71" - 1.8m
Depth	36 1/4" - 92.1 cm
Approximate weight	750 lbs. - 340 kg
Maximum load	1350 lbs. - 612 kg
Rating	100 h.p.
Steering	Mechanical
Colors	Metalflake gold and yellow; orange and white w/white interior; blue and white w/blue interior

STANDARD FEATURES:

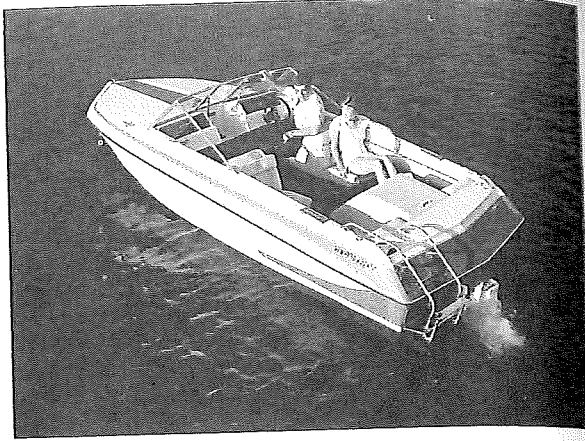
- Hand-laid fiberglass construction
- Built-in 18 gallon fuel system with gauge
- Bow seating - deep foam cushioned w/lockable storage under
- Convertible seating
- Glastron 32-oz. marine grade vinyl
- Functional walk-through tempered glass windshield with plexiglass center and side panes
- Side storage trays
- Dash storage tray
- Bow locker
- Underseat storage compartment
- Polypropylene cut pile carpeting
- Easy-mount convertible top w/boot cover
- S&S ski eyes & bow eye
- Chrome plated hardware
- Navigation lights
- BIA Certified
- Aluminum bow rails
- Teak step pads
- Deluxe sport wheel
- Positive foam flotation

PERFORMANCE:

Optimum performance range	50-100 h.p.
Normal speed range	90 h.p. - 42-44 mph/67-71 kph

OPTIONS:

- Side/stern curtains
- Tonneau bow cover



SSV-173

The new closed bow SSV 173 is a true performer. Super smooth, super stable, with economical 4 and 6 cylinder stern drive power. Closed bow protection and sleek SSV style make this one of the best all weather boats made.

LIST PRICE

SALE PRICE

_____ w/Merc 165	_____
_____ w/Merc 470	_____
_____ w/OMC/Merc 140	_____

SSV-173

SPECIFICATIONS:

LOA	17'1" - 5.2m
Gunwale length	18' 0" - 5.5 m
Beam	83" - 2.1m
Transom width	79" - 2.0m
Depth	46 3/4" - 1.2m
Approximate weight	1100 lbs. - 499 kg
Maximum load	1050 lbs. - 476 kg
Steering	Mechanical
Colors	Tutone orange and white w/white interior; Optional: Metalflake silver and gray

STANDARD FEATURES:

SSV Hull/ Hand-laid fiberglass construction/ BIA Certified/ Convertible seating/ Glastron 32-oz. marine grade vinyl/ Functional walk-through tempered glass windshield with plexiglass center and side panes/ Lockable glove box/ Easy-mount convertible top with boot cover/ Bow locker/ Under-seat storage compartment/ Polypropylene cut pile carpet/ Teak step pads/ Side storage trays/ Command console instrumentation: Tachometer, speedometer, voltmeter, fuel gauge, rocker switches for: bilge pump, accessory, blower, horn, tilt (and trim), navigation & anchor lights, panel & interior lights/ Built-in 18 gallon fuel system with gauge/ Electric horn/ S/S ski eyes & bow eye/ Navigation lights/ Chrome plated hardware/ Stern boarding ladder/ 32-qt. ice chest/ Non-skid finish on deck stripe/ Cockpit courtesy light/ Positive foam flotation

PERFORMANCE:

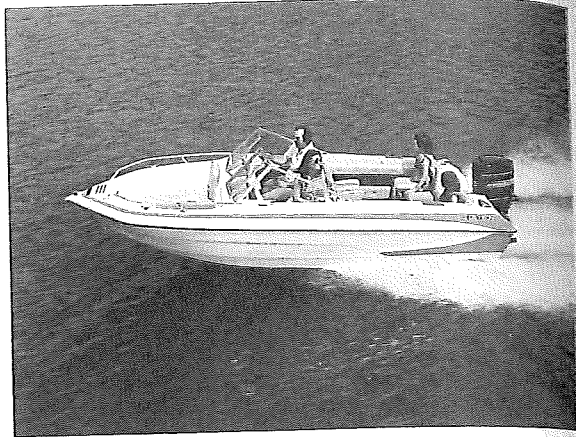
Normal speed range

OMC 140:	38-40 mph/61-64 kph
Merc 120:	37-40 mph/59-64 kph
Merc 140:	40-42 mph/64-67 kph
Merc 165:	45-47 mph/72-75 kph
Merc 470:	45-47 mph/72-75 kph

OPTIONS

- Side/stern canvas
- Metalflake option
- In handle trim
 - OMC
 - Merc
- Power steering
 - OMC
 - Merc

Engine Options:	120 Merc
	140 Merc
	140 OMC
	165 Merc
	470 Merc



SSV-176

The SSV hull is setting the standard for excellence in performance and stability in the medium-sized boat world. "Super smooth", "super stable" and all the built-in features for family boating excitement. The outboard SSV-176 runs quiet in chop with an open bow that gives extra room for family and gear. Quick, quiet and a great all around performance outboard.

PACKAGE PRICE

LIST

Boat	_____
Motor _____ H.P.	_____
Trailer	_____
Accessories	_____
Total List	_____
Sale Price	_____

SSV-176

SPECIFICATIONS:

LOA	17' 1 1/4" - 5.0m
Gunwale length	18' 0" - 5.5 m
Beam	83" - 2.1m
Motor shaft length	20" - 50.8 cm
Transom width	79" - 2.0m
Depth	46 3/4" - 1.2m
Approximate weight	955 lbs. - 43 kg
Maximum load	1550 lbs. - 703 kg
Rating	140 h.p.
Steering	Mechanical
Colors	Tutone blue and white w/blue interior; metal-flake gold and yellow w/yellow interior

STANDARD FEATURES:

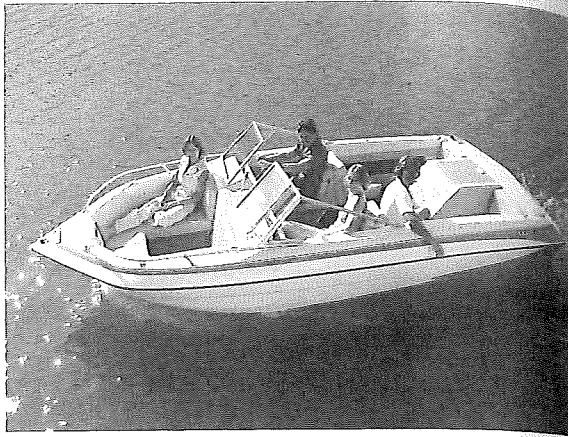
- Hand-laid fiberglass construction
 - Functional walk-through tempered glass windshield w/plexiglass center and side panes
 - Polypropylene cut pile carpeting
 - Bow locker
 - Side storage trays
 - Bow seating - deep foam cushioned w/storage under
 - S&S ski eyes & bow eye
 - Electric horn
 - Teak step pads
 - Positive foam flotation
- SSV hull
 - Easy-mount convertible top w/boot
 - BIA Certified
 - Convertible seating
 - Glastron 32-oz. marine grade vinyl
 - Lockable glove box
 - Underseat storage compartments
 - Aluminum bow rails
 - Chrome plated hardware
 - Navigation lights
 - Built-in 18 gallon fuel system w/gauge
 - Lift-up table between stern seats

PERFORMANCE:

Optimum performance range	115 h.p. - 45-47 mph/72-75 kph
Normal speed range	140 h.p. - 48-50 mph/76-80 kph
	70 h.p. - 30-35 mph/48-56 kph
	85 h.p. - 38-42 mph/61-67 kph

OPTIONS:

- Stern/side canvas
- Tonneau bow cover
- Stern boarding ladder
- Ice chest



SSV-177

An all-around family boat that's great for skiing and cruising with room for all your boating needs. This 17' SSV stern drive combines a spacious interior with superior hull performance in an economical package that's great for skiing and cruising with room for all your boating needs.

LIST PRICE

_____ w/120 Merc

SALE PRICE

SPECIFICATIONS:

LOA	17' 1" - 5.2m
Gunwale length	18' 0" - 5.5m
Beam	83" - 2.1m
Transom width	79" - 2.0m
Depth	46 $\frac{3}{4}$ " - 1.2m
Approximate weight	1100 lbs. - 499 kg
Maximum load	1050 lbs. - 476 kg
Steering	Mechanical
Colors	Tutone blue and white/blue interior

STANDARD FEATURES:

SSV hull/ hand-laid fiberglass construction/ BIA Certified/ Built-in 28 gallon fuel system with gauge/ Aluminum bow rails/ Chrome plated hardware/ Functional walk-through tempered glass windshield with plexiglass center and side panes/ Easy-mount convertible top with boot cover/ Convertible seating/ Polypropylene cut pile carpet/ Glastron 32-oz. marine grade vinyl/ Bow locker/ Underseat storage compartment/ Side storage trays/ Bow seating - deep foam cushioned/ Navigation lights/ Ski eyes/ Cockpit courtesy lighting/ Electric horn/ 32-qt. ice chest/ Command console instrumentation: tachometer, speedometer, voltmeter, fuel gauge, rocker switches for bilge pump, blower, horn, accessory, tilt (and trim, navigation & anchor lights, panel & interior lights/ Positive foam flotation

PERFORMANCE:

Normal speed range

Merc 120: 37-40 mph/59-64 kph

OPTIONS:

Side/stern canvas

Tonneau boat cover

Stern boarding ladder

In handle trim

OMC

Merc

Power steering, where applicable

OMC

Merc

Engine options: 120 Merc



SSV-177 XL

An elegant 17' stern drive with spacious interior and SSV performance. This deluxe all-around family SSV is smooth riding, easy handling, predictable and secure. Just the right size for easy trailering.

LIST PRICE		SALE PRICE
_____	OMC 140	_____
_____	Merc 140	_____
_____	Merc 470	_____
_____	Merc 165	_____

SSV-177 XL

SPECIFICATIONS:

LOA	17' 1" - 5.2m
Gunwale length	18' 0" - 5.5 m
Beam	83" - 2.1m
Transom width	79" - 2.0m
Depth	46 1/2" - 1.2m
Approximate weight	1100 lbs. - 499 kg
Maximum load	1050 lbs. - 476 kg
Steering	Mechanical
Colors	Metalflake gold and yellow/yellow interior Metalflake blue and white/blue interior

STANDARD FEATURES:

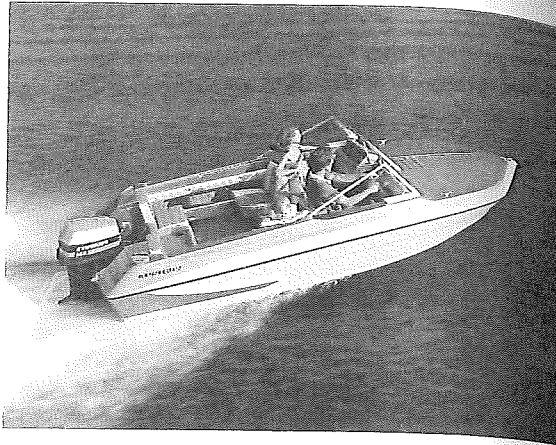
SSV hull/ Hand-laid fiberglass construction/ BIA Certified/ Command console instrumentation: tachometer, speedometer, voltmeter, fuel gauge, rocker switches for: bilge pump, navigation & anchor lights, blower, panel & interior lights, horn, accessory, tilt/ Built-in 28 gallon fuel system with gauge/ Aluminum bow rails/ Chrome plated hardware/ Functional walk-through tempered glass windshield with plexiglass center and side panes/ Easy-mount convertible top with boot cover/ Convertible seating/ Polypropylene cut pile carpeting/ Glas-tron 32-oz. marine grade vinyl/ Lockable glove box/ Bow locker/ Underseat storage compartments/ Side storage trays/ Bow seating - deep foam cushioned/ Navigation lights/ S/S ski eyes & bow eye/ Cockpit courtesy lighting/ Electric horn/ Bilge pump and blower/ Stern boarding ladder/ 32-qt. ice chest/ Drink holders/ Positive foam flotation

PERFORMANCE:

Normal speed range	OMC 140: 38-40 mph/60-64 kph
	Merc 140: 40-42 mph/64-67 kph
	Merc 165: 45-47 mph/72-75 kph
	Merc 470: 45-47 mph/72-75 kph

OPTIONS:

Side/stern canvas	Engine Options: 140 Merc
Tonneau bow cover	140 OMC
In handle trim	165 Merc
	470 Merc
OMC	
Merc	
Power steering, where applicable	
OMC	
Merc	



SSV-178

Closed bow SSV 178 smoothes out big lake chop with stability and performance. Excellent for skiing or cruising. This economical outboard is rated for 140 horsepower — all the power necessary for the whole family.

PACKAGE PRICE

LIST PRICE

Boat	_____
Motor _____ H.P.	_____
Trailer	_____
Accessories	_____
Total List	_____
Sale Price	_____

SSV-178

SPECIFICATIONS:

LOA	17'1¼" - 5.2 m
Gunwale length	18' - 5.5 m
Beam	83" - 2.1 m
Motor shaft length	20" - 50.8 cm
Transom width	79" - 2.0 m
Depth	46¼" - 1.2 m
Approximate weight	955 lbs. - 433 kg
Maximum load	1550 lbs. - 703 kg
Rating	140 h.p.
Steering	Mechanical
Colors	Tutone orange and white/white interior Metalflake silver and gray/gray interior

STANDARD FEATURES:

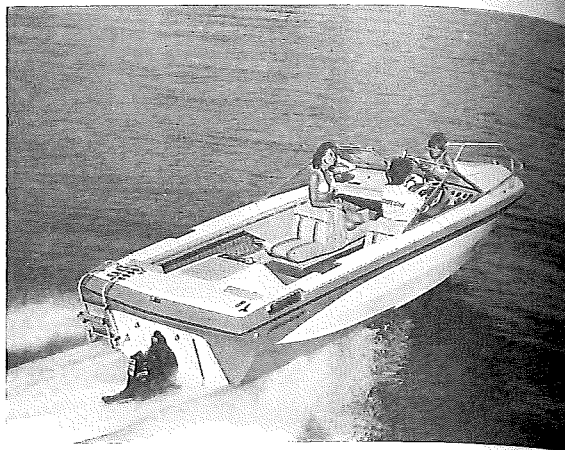
- Hand-laid fiberglass construction
- SSV hull
- BIA Certified
- Built-in 18 gallon fuel system with gauge
- Functional walk-through tempered glass windshield with plexiglass center and side panes
- Easy-mount convertible top with boot cover
- Convertible seating
- Polypropylene cut pile carpeting
- Glastron 32-oz. marine grade vinyl
- Chrome plated hardware
- Side storage trays
- Lockable glove box
- Navigation lights
- Ski eyes
- Underseat storage compartments
- Bow storage compartment
- Lift-up table between stern seats
- Teak step pads
- Electric horn

PERFORMANCE:

Optimum performance range	85-140 h.p.
Normal speed range	70 h.p. - 30-35 mph/48-56 kph 85 h.p. - 38-42 mph/61-67 kph 115 h.p. - 45-47 mph/72-75 kph 140 h.p. - 48-50 mph/76-80 kph

OPTIONS:

- Side/stern canvas
- Boarding ladder
- Ice chest



V-184

The all-new closed bow deluxe V-184 is a true performer. Super smooth, super stable, and performance-minded, the just right combination for all-round economical boating pleasure. The deep vee hull smoothes out chop while the closed bow keeps you out of the weather.

LIST PRICE

SALE PRICE

_____ Merc 165	_____
_____ Merc 890	_____
_____ OMC 185	_____
_____ Volvo 200	_____
_____ OMC 200	_____

V-184

SPECIFICATIONS:

LOA	18'1 3/4" - 5.6 m
Beam	84 1/4" - 2.2 m
Transom width	80" - 2.0 m
Depth	43 3/4" - 1.1 m
Approximate weight	1290 lbs. - 585 kg
Maximum load	1050 lbs. - 476 kg
Steering	Mechanical
Colors	Opaque blue and white/blue interior Option: Metalflake silver and grey/silver interior

STANDARD FEATURES:

Hand-laid fiberglass construction	BIA Certification
Vinyl soft top	Step-through tempered glass windshield
Lockable glove box	Teak step pads
Inland lighting	Bilge pump
Command console:	Bilge blower
Water temperature gauge	Stern boarding ladder
Oil Pressure	Ski Eyes
Tachometer	Cut pile carpeting
Fuel gauge	Glastron 32-oz. marine grade vinyl
Temperature gauge	Aluminum Bow rail
Voltmeter	Toggle switches
Speedometer	
25 gallon bow tank	

PERFORMANCE:

Normal speed range	Merc 165: 42-44 mph/67-71 kph
	Merc 890: NA
	OMC 185: 44-46 mph/71-74 kph
	Volvo 200: NA

OPTIONS:

Side and aft canvas	Engine Options: 165 Merc
In handle trim	898 Merc
OMC	185 OMC
Merc	200 Volvo
Power steering, where applicable	200 OMC
OMC	
Merc	



SSV-188

A real value for the outboard families who want everything. This SSV 18 footer is deep, wide and stable. Beautifully appointed and built for big water.

PACKAGE PRICE

Boat
 Motor _____ H.P.
 Trailer
 Accessories
 Total List
 Sale Price

LIST

SSV-188

SPECIFICATIONS:

LOA	17'11½" - 5.5 m
Gunwale length	19'1½" - 5.8 m
Beam	88" - 2.2 m
Motor shaft length	25" - 63.5 cm
Transom width	84¾" - 2.2 m
Depth	45¾" - 1.2 m
Approximate weight	1190 lbs. - 541 kg
Maximum load	1750 lbs. - 748 kg
Rating	150 h.p.
Steering	Mechanical
Colors	Orange and white w/white interior Opt. Silver Metalflake

STANDARD FEATURES:

- Hand-laid fiberglass construction
- BIA Certified
- Walk-through tempered glass windshield with plexiglass center and side panes
- Self-bailing bow compartment
- Easy-mount convertible top with boot cover
- Convertible seating
- Glastron 32-oz. marine grade vinyl
- Polypropylene cut pile carpeting
- Lockable glove compartment
- Bow locker and underseat storage compartment
- Side storage trays
- Bow seating - deep foam cushioned
- Aluminum bow rails
- Chrome plated hardware
- Navigation lights
- Ski eyes
- Cockpit courtesy lighting
- Built-in 25 gallon fuel system with gauge
- Speedometer
- Electric horn
- In-floor ski locker with teak lid
- Lift-up table between stern seats
- Positive foam flotation

PERFORMANCE:

Optimum performance range	115 - 150 h.p.
Normal speed range	135 - 150 h.p. - 45 - 47 mph

OPTIONS

- Side and stern curtains
- Tonneau bow cover
- Stern ladder
- Ice chest



SSV-189

The beautiful balance of quiet stern drive performance and style in an SSV 18 footer. Smooth and stable with the lines of a thoroughbred this SSV out-performs competition in every class. Lots of room for big families with the power to pull multiple skiiers.

PACKAGE PRICE	LIST
Boat	_____
Motor _____ H.P.	_____
Trailer	_____
Accessories	_____
Total List	_____
Sale Price	_____

SPECIFICATIONS:

LOA	18' ½" - 5.5m
Gunwale length	19' 1¾" - 5.8 m
Beam	88" - 2.2m
Transom width	84¾" - 2.2m
Depth	45¾" - 1.2m
Approximate weight	1405 lbs. - 637 kg
Maximum load	1200 lbs. - 544 kg
Steering	Mechanical
Colors	Tutone orange & white w/white interior

STANDARD FEATURES:
 Hand-laid fiberglass construction/ SSV hull/ Self-bailing bow compartment/ BIA Certified/ Command console instrumentation: tachometer, speedometer, voltmeter, fuel gauge; Rocker switches for: bilge pump, blower, horn, accessories, tilt/ 32-Qt. ice chest/ Functional walk-through tempered glass windshield with plexiglass center and side panes/ Easy-mount convertible top with boot cover/ Convertible seating/ Glaston 32-oz. marine grade vinyl/ Polypropylene cut pile carpeting/ Lockable glove compartment/ Bow locker/ Under-seat storage compartment/ Side storage trays/ In-floor ski locker/ Bow seating - deep foam cushioned/ Aluminum bow rails/ Chrome plated hardware/ Navigation lights/ S/S ski eyes & bow eye/ Cockpit courtesy lighting/ Electric horn/ Bilge pump and blower/ Drink holders/ Built-in 28 gallon fuel system with gauge/ Speedometer/ Deluxe sport wheel/ Positive foam flotation

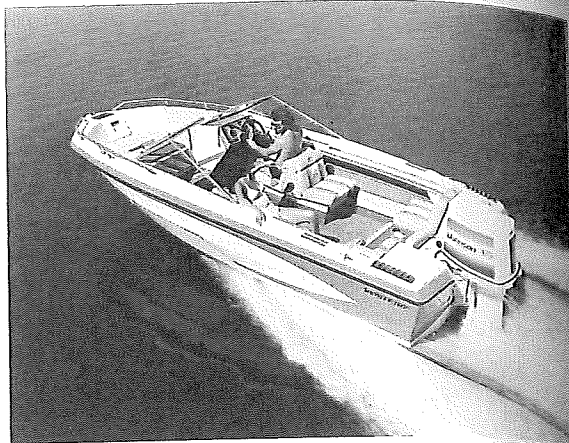
PERFORMANCE:

Normal speed range	Merc 165: 44-46 mph/70-74 kph
	OMC 185: 45-47 mph/72-75 kph
	Chry 195: 46-48 mph/74-77 kph
	Merc 470: 44-46 mph/70-74 kph
	Merc 898: 46-48 mph/74-77 kph

OPTIONS:

Side/stern canvas	
Tonneau bow cover	
Boarding ladder	
In handle trim	
OMC	
Merc	
Power steering, where applicable	
OMC	
Merc	

Engine Options:	165 Merc
	470 Merc
	185 OMC
	898 Merc
	195 Chrysler
	200 OMC



V-192

The V-192 is the most elegant outboard deep vee in its class. Rated for V-6 power, this big family performer smooths out the roughest of seas. Completely appointed with features for every boating requirement, this 19 footer leads the outboard family class.

LIST PRICE	SALE PRICE
_____	_____
_____	_____
_____	_____
_____ Trailer	_____
_____ Accessories	_____
Package price w/ _____	H.P. \$ _____

SPECIFICATIONS:

LOA	18' 9" - 5.7m
Gunwale length	20' - 6.1 m
Beam	87" - 2.2m
Motor shaft length	25" - 63.5 cm
Transom width	83½" - 2.1m
Depth	48½" - 1.2m
Approximate weight	1330 lbs. - 603 kg
Maximum load	1850 lbs. : 839 kg
Rating	175 h.p.
Steering	Mechanical
Colors	Blue and White/White Int. Opt Brown and Tan/Tan Int.

STANDARD FEATURES:

Hand-laid fiberglass construction	Deep vee hull
BIA Certified	Command console
Functional walk-through	Convertible seating
tempered glass windshield	Easy-mount convertible
w/plexiglass center and	top w/boot cover
side panes	Glastron 32-oz. marine
Built-in 30 qt. ice chest	grade vinyl
Polypropylene cut pile carpeting	Lockable glove
Underseat storage compartment	compartment
In-floor ski locker w/teak lid	Side storage trays
Bow seating - deep foam	Aluminum bow rails
cushioned	Navigation lights
Chrome plated hardware	Cockpit courtesy lighting
Built-in 25 gallon fuel system	Electric horn
w/gauge	Self-bailing bow
ABS dash w/instrumentation	compartment
Table with drink holders	S/S ski eyes & bow eye.
between stern seats	Positive flotation

PERFORMANCE:

Optimum performance range	115 - 175 h.p.
Normal speed range	175 h.p. - 51 - 53 mph/81 - 85 kph

OPTIONS:

- Side/stern canvas
- Tonneau bow cover
- Boarding ladder



V-194 XL

The '79 V-194 leads the family boat line with all new interior, lavishly appointed with buckets, classic style, refined to perfection, for the boating connoisseur.

LIST PRICE

SALE PRICE

- W/190 GL
- W/165 ME
- W/198 ME
- W/185 OMC
- Trailer
- Accessories

Package price w/ _____ H.P. _____

V-194 XL

SPECIFICATIONS:

LOA	18' 10 1/2" - 5.8m
Gunwale length	20' - 6.1 m
Beam	87" - 2.2m
Transom width	83 1/2" - 2.1m
Depth	48 1/2" - 1.2m
Approximate weight	1360 lbs. - 617 kg
Maximum load	1200 lbs. - 544 kg
Steering	Mechanical
Colors	Metalflake brown & tan w/tan interior Tutone yellow hull and white deck w/yellow interior

STANDARD FEATURES:

Hand-laid fiberglass construction/ BIA certified/ Deep vee hull/ Easy-mount convertible top with boot cover/ Walk-through tempered glass windshield/ Sun lounge/ 40-qt. ice chest/ Forward bucket/ Rear bench seating/ Polypropylene cut pile carpeting/ Lockable glove compartment/ Bow locker/ Underseat storage compartment/ Side storage trays/ Aluminum bow rails/ Chrome plated hardware/ Navigation lights/ S/S ski eyes & bow eye/ Cockpit courtesy lighting/ Enclosed stern storage/ Bilge pump and blower/ Stern boarding ladder/ Command console instrumentation: tachometer, speedometer, voltmeter, fuel gauge; rocker switches for: bilge pump, blower, horn, accessories, tilt/ In-floor ski locker/ Built-in 25 gallon fuel system with gauge/ Electric horn/ Speedometer/ Deluxe sport wheel/ Teak taffrail/ Positive foam flotation

PERFORMANCE:

Normal speed range

Merc 165:	41-43 mph/66-69 kph
OMC 185:	45-47 mph/72-75 kph
Volvo 200:	48-50 mph/77-80 kph
Merc 228:	49-51 mph/78-82 kph
Merc 260:	57-60 mph/92-97 kph
Merc 898:	47-49 mph/75-78 kph

OPTIONS:

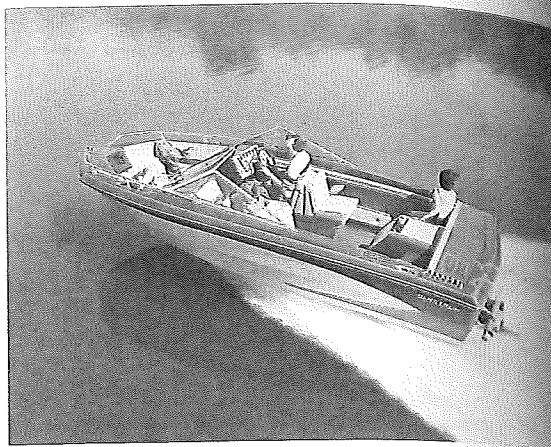
- Side/stern canvas
- In handle trim
- OMC
- Merc

Power steering, where applicable

- OMC
- Merc

Engine Options:

165 Merc	
185 OMC	
200 OMC	
200 Volvo	
228 Merc	
230 OMC	
260 Merc	
898 Merc	



V-195 XL

A perfect combination of space, performance and comfort, the V-195 has a smooth running deep vee hull and open bow seating for optimum family usage. Sporty metallic gel coat attracts attention wherever it goes. Comfort, convenience and performance highlight this big family stern drive.

LIST PRICE

SALE PRICE

_____	Merc 165	_____
_____	OMC 185	_____
_____	Merc 898	_____
_____	Volvo 200	_____
_____	Merc 228	_____
_____	OMC 200	_____
_____	OMC 230	_____
_____	Trailer	_____
_____	Accessories	_____
Package Price w/		H.P. \$
36		

V-195 XL

SPECIFICATIONS:

LOA	18' 10 1/2" - 5.8m
Gunwale length	20' - 6.1 m
Beam	87" - 2.2m
Transom width	83 1/2" - 2.1m
Depth	48 1/2" - 1.2m
Approximate weight	1435 lbs. - 651 kg
Maximum load	1200 lbs. - 544 kg
Steering	Mechanical
Colors	Opaque blue & white w/blue interior; Metalflake brown & tan w/tan interior

STANDARD FEATURES:

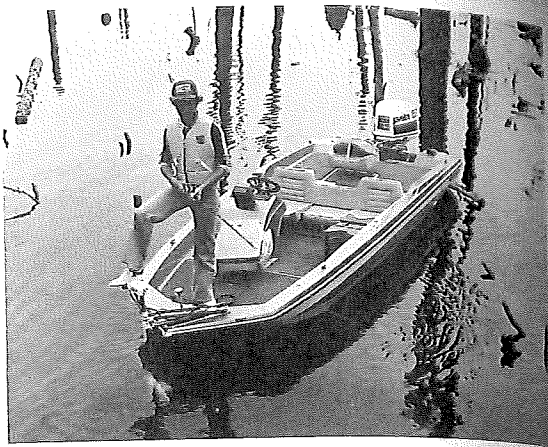
Hand-laid fiberglass construction/ Deep vee hull/ Self-bailing bow compartment/ BIA Certified/ Command console instrumentation: tachometer, speedometer, voltmeter, fuel gauges; rocker switches for: bilge pump, blower, horn, accessories, tilt/ Walk-through tempered glass windshield/ Easy-mount convertible top with boot cover/ Convertible seating/ Glastron 32-oz. marine grade vinyl/ Polypropylene cut pile carpeting/ Lockable glove compartment/ Bow locker/ Under-seat storage compartment/ Side storage trays/ Bow seating - deep foam cushioned/ Aluminum bow rails/ Chrome plated hardware/ Navigation lights/ Ski eyes/ Cockpit courtesy lighting/ Electric horn/ Bilge pump and blower/ Stern board-ladder/ 30-qt. ice chest/ Drink holders/ In-floor ski locker/ Deluxe sport wheel/ Built-in 28 gallon fuel system with gauge

PERFORMANCE:

Normal speed range	Merc 165: 41-43 mph/66-69 kph
	OMC 185: 45-47 mph/72-75 kph
	Volvo 200: 48-50 mph/77-80 kph
	Merc 228: 49-51 mph/78-82 kph
	Merc 898: 47-49 mph/75-78 kph

OPTIONS:

Side/stern canvas	Engine Options: 165 Merc
Tonneau bow cover	185 OMC
In-handle trim	200 OMC
OMC	200 Volvo
Merc	228 Merc
Power steering, where applicable	230 OMC
OMC	898 Merc
Merc	



HP-154

SPECIFICATIONS:

LOA	15' 3 1/2" - 4.7m
Gunwalé length	16' 3" - 5.0 m
Beam	74 3/4" - 1.9m
Motor shaft length	20" - .508m
Transom width	73 3/4" - 1.87m
Depth	30" - .08m
Approximate weight	700 lbs. - 318 kg
Maximum load	925 lbs. - 421 kg
Rating	100 h.p.
Steering	Mechanical
Colors	Metalflake gold and yellow w/yellow interior; Metalflake brown and tan; Metalflake blue and blue w/blue interior; Metalflake silver & gray

HP-154

The largest 15' high performance bassboat on today's market with stability and room that remain unmatched by competition. Thoughtful engineering has created a perfect performance bassboat that trailers easily and performs beautifully with low horsepower options. There's also more space for equipment than you would imagine in this high performance 15 footer.

PACKAGE PRICE _____ LIST

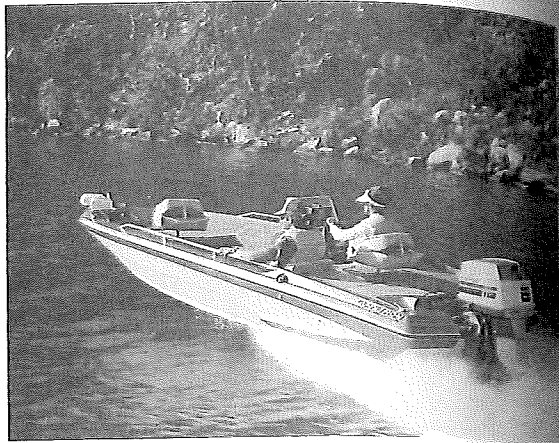
Boat	_____
Motor _____ H.P.	_____
Trailer	_____
Accessories	_____
Total list	_____
Sale Price	_____

STANDARD FEATURES:

Hand-laid fiberglass construction	Glastron 32-oz. marine grade vinyl
Polypropylene cut pile carpeting	Aluminum hand rail
Chrome plated hardware	BIA Certified
Removable bow and stern lights	Bilge pump
Custom console w/plexiglass anti-glare shield	Ski eyes
Grant soft-grip steering wheel	Switches for live-well pump and accessories
Two folding removable fishing seats w/chrome plated pedestals	Mid-boat socket for relocating seat
Fore and aft casting platforms	Bench seat
Custom bow accessory panel includes: molded plug w/two connectors, engine tilt switch, voltmeter w/battery test switch, charge switch, cigar lighter with chart light	Rod Box
	80-qt. ice chest
	Circulating live wells
	Electric trolling motor mounting area
	Built-in 12 gallon fuel system w/gauge

PERFORMANCE:

Optimum performance range	50-100 h.p.
Normal speed range	85 h.p. - 44-47 mph/70-75 kph
	50 h.p. - 30-32 mph/48-51 kph



HPV-160

One of the newest members of our bassboat family is this 16' modified vee hull. A superb fishing boat designed for speed, stability and a soft ride, with room for all your gear.

PACKAGE PRICE _____ LIST

Boat	_____
Motor _____ H.P.	_____
Trailer	_____
Accessories	_____
Total list	_____
Sale Price	_____

HPV-160

LOA	16'2 1/2" - 5.0 m
Gunwale length	16'8 1/2" - 5.1 m
Beam	79 1/4" - 2.0 m
Motor shaft length	20" - .508 m
Transom width	77 1/4" - 2.0 m
Depth	32" - .81 m
Approximate weight	925 lbs. - 420 kg
Maximum load	120 h.p.
Rating	Mechanical
Steering	Metalflake brown and tan; Metalflake blue and blue; Metalflake silver and grey; Metalflake gold and yellow
Colors	

STANDARD FEATURES:

- Hand-laid fiberglass construction
- Glastron 32-oz. marine grade vinyl
- Polypropylene cut pile carpeting
- Aluminum hand rail
- Chrome plated hardware
- BIA Certified
- Removable stern light
- S/S ski eyes & bow eye
- Built-in 18 gallon fuel system with gauge
- Bilge pump
- Folding removable fishing seats
- Bench seat
- Fore and aft casting platform
- Recirculating live wells
- Electric trolling motor mounting area
- Rod and ski box - port
- Grant soft grip steering wheel
- Starboard storage for tackle box
- Custom bow accessory panel includes:
 - molded plug w/two connectors, engine tilt switch,
 - voltmeter w/battery test switch, charge switch,
 - cigar lighter w/chart light

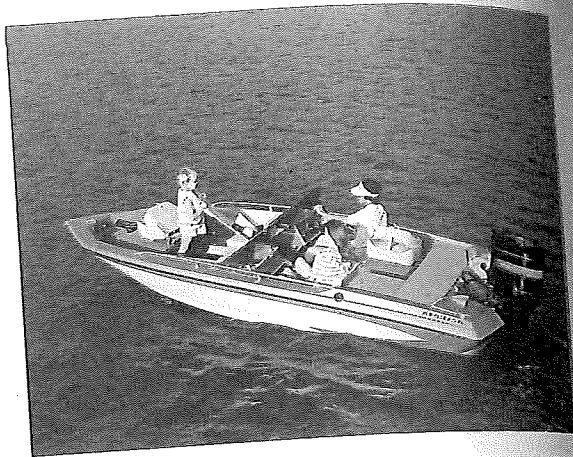
PERFORMANCE:

Optimum performance range 70-120 h.p.
 Normal speed range 115 h.p. - 48-51 mph/77-82 kph
 90 h.p. - 43-45 mph/67-69 kph

OPTIONS:

- Upright windscreen* (Clear)
- Sleek windscreen* (Clear)
- Upright windscreen* (Tinted)
- Sleek windscreen* (Tinted)

* Purchased through Parts and Accessories



HPV-165

This all new 16' combination fish-or-ski is versatile enough to meet all the demands of a boating family. An added console and padded bow seating makes it a fishing boat useful enough for the family. With a rating up to 120, it has the power to meet all your skiing/fishing needs.

PACKAGE PRICE _____ LIST

Boat _____
 Motor _____ H.P. _____
 Trailer _____
 Accessories _____
 Total list _____

Sale Price _____

HPV-165

SPECIFICATIONS:

LOA	16'2½" - 5.0 m
Gunwale length	16'8½" - 5.1 m
Beam	79¾" - 2.0 m
Motor shaft length	20" - .508 m
Transom width	77¼" - 2.0 m
Depth	32" - .81 m
Approximate weight	950 lbs. - 431 kg
Maximum load	1075 lbs. - 488 kg
Rating	120 h.p.
Steering	Mechanical
Colors	Metalflake brown and tan; Metalflake gold and yellow; Metalflake blue and blue; Metalflake silver and gray

STANDARD FEATURES:

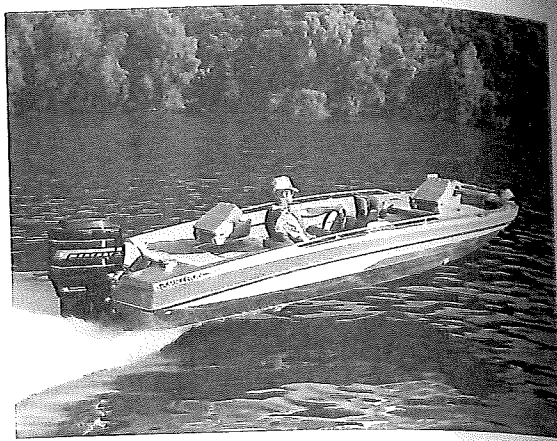
Hand-laid fiberglass construction	Glastron 32-oz. marine grade vinyl
Polypropylene cut pile carpeting	BIA Certified
Aluminum hand rail	S/S ski eyes & bow eyes
Chrome plated hardware	Built-in 18 gallon fuel system w/gauge
Folding removable fishing seats	Bilge pump
Fore and aft casting platforms	Bench seat
Rod box - port	Recirculating live wells
Removable stern light	Electric trolling motor mounting area
Twin custom console	Stern storage for batteries and fuel tanks
Grant soft grip steering wheel	In-floor ski locker
Starboard storage for tackle box	Storage compartment forward of driver console
Custom bow accessory panel includes: molded plug with two connectors, engine tilt switch, voltmeter w/battery test switch, charge switch, cigar lighter w/chart light	

PERFORMANCE:

Optimum performance range	70-120 h.p.
Normal speed range	115 h.p. - 48-51 mph/77-82 kph 90 h.p. - 43-45 mph/69-72 kph

OPTIONS:

Upright windscreens* (Clear)
 Sleek windscreens* (Clear)
 Upright windscreens* (Tinted)
 Sleek windscreens* (Tinted)
 *Purchased through Parts and Accessories



HPV-170

The new generation bassboat! This modified V-hull is designed for the soft ride and speed of a deep vee and broad beam for stability expected of a superb fishing boat. The HPV-170 is especially designed for a fast steady ride in rough water and performs with a wide range of horsepower up to 175.

PACKAGE PRICE _____ LIST

Boat	_____
Motor _____ H.P.	_____
Trailer	_____
Accessories	_____
Total list	_____
Sale Price	_____

800-1250

HPV-170

SPECIFICATIONS:

LDA	17' 9 1/2" - 5.4m
Gunwale length	18' 3" - 5.6 m
Beam	91 1/4" - 1.2m
Motor shaft length	20" - .508m
Transom width	90" - 2.2m
Depth	35 3/4" - .91m
Approximate weight	1090 lbs. - 496 kg
Maximum load	1180 lbs. - 536 kg
Bating	175 h.p.
Steering	Mechanical
Colors	Metalflake Copper/Copper Interior; Metalflake Silver/Gray Interior

STANDARD FEATURES:

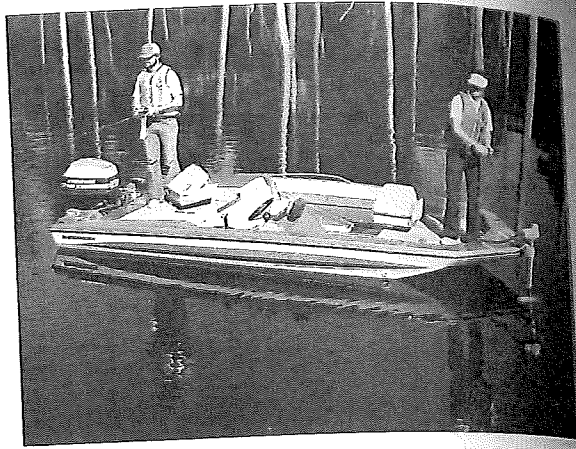
- Hand-laid fiberglass construction
- Polypropylene cut pile carpeting
- Chrome plated hardware
- S/S ski eyes and bow eye
- Folding removable fishing seats
- Fore and aft casting platforms
- Bench seat
- Grant soft grip steering wheel
- Custom bow accessory panel includes: molded plug w/two connectors, engine tilt switch, voltmeter w/battery test switch, charge switch, cigar lighter w/chart light
- Glastron 32-oz. marine grade vinyl
- Aluminum hand rail
- BIA Certified
- Removable stern light
- Built-in 25 gallon fuel system w/gauge
- Bilge pump
- Built-in ice chest
- Recirculating live wells
- Electric trolling motor mounting area
- Rod and ski boxes
- Dual cable steering

PERFORMANCE:

Optimum performance range	115-175 h.p.
Normal speed range	175 h.p. - 57-60 mph/91-96 kph 140 h.p. - 47-49 mph/75-79 kph

OPTIONS:

- Upright windscreen* (Clear)
- Sleek windscreen* (Clear)
- Upright windscreen* (Tinted)
- Sleek windscreen* (Tinted)
- *Purchased through Parts & Accessories



HP-171

The 17' high performance bassboat that has it all. It's low profile looks great and provides great handling on the windiest day. It is big, spacious, and convenient for the most avid fisherman, and will take a wide range of power to 140 horsepower.

PACKAGE PRICE _____	LIST
Boat _____	_____
Motor _____ H.P.	_____
Trailer _____	_____
Accessories _____	_____
Total list _____	_____
Sale Price _____	

HP-171

SPECIFICATIONS:

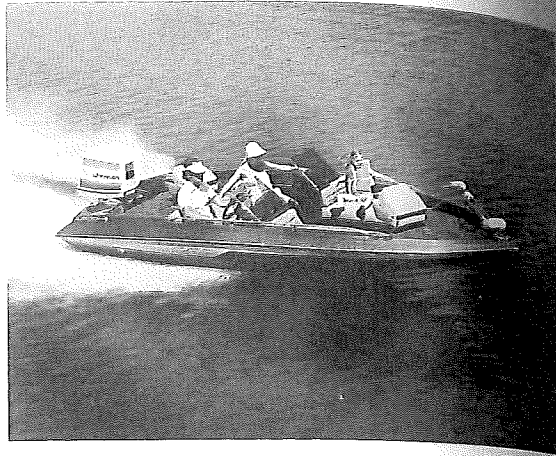
LDA	16' 11 1/2" - 5.2m
Gunwale length	17' 11" - 5.5 m
Beam	81" - 2.1m
Motor shaft length	20" - .508m
Transom width	80" - 2.0m
Depth	31 1/4" - .80m
Approximate weight	900 lbs. - 409 kg
Maximum load	1065 lbs. - 484 kg
Rating	140 h.p.
Steering	Mechanical
Colors	Metalflake silver and gray; Metalflake brown and tan; Metalflake gold and yellow; Metalflake blue and blue

STANDARD FEATURES:

- Hand-laid fiberglass construction
- Polypropylene cut pile carpeting
- BIA Certified
- Built-in 18 gallon fuel system w/gauge
- Folding removable fishing seats
- Fore and aft casting platforms
- Rod box
- Bilge pump
- Grant soft grip steering wheel
- Removable bow and stern lights
- Custom bow accessory panel includes: molded plug with two connectors, engine tilt switch, voltmeter w/battery test switch, charge switch, cigar lighter w/chart light
- Glastron 32-oz. marine grade vinyl
- S/S ski eyes and bow eye
- Built-in ice chest
- Bench seat
- Recirculating live wells
- Electric trolling motor mounting area
- Mid-boat socket for relocating seat
- Custom console and plexi-glass anti-glare shield
- Chrome plated hardware
- Switches for live-well pump and accessories
- Aluminum hand rail

PERFORMANCE:

Optimum performance range	80 - 140 h.p.
Normal speed range	140 h.p. - 49-51 mph/78-81 kph
	85 h.p. - 41-43 mph/66-69 kph
	70 h.p. - 34-35 mph/55-56 kph



HPV-175

Enjoy the best of both worlds with this combination fish-or-ski. Go fishing in the morning, remove the fishing seats in the afternoon, and enjoy skiing at its best. Roomy, comfortable and powerful with up to 175 horsepower.

LIST PRICE

SALE PRICE

Package Price w/ _____ H.P.

HPV-175

SPECIFICATIONS:

LDA	17' 9 1/2" - 5.4m
Gunwale length	18' 3" - 5.6 m
Beam	91 1/4" - 2.3m
Motor shaft length	20" - .508m
Transom width	90" - 2.2m
Depth	35 3/4" - .91m
Approximate weight	1115 lbs. - 507 kg
Maximum load	1180 lbs. - 536 kg
Rating	175 h.p.
Steering	Mechanical
Colors	Metalflake brown and tan; Metalflake gold and yellow; Metalflake blue and blue; Metalflake silver and gray

STANDARD FEATURES:

Hand-laid fiberglass construction	Glastron 32-oz. marine grade vinyl
Polypropylene cut pile carpeting	Aluminum hand rail
Chrome plated hardware	BIA Certified
S/S ski eyes & bow eye	Built-in 15 gallon fuel system w/gauge
Bilge pump	Built-in ice chest
Folding removable fishing seats	Bench seat
Fore and aft casting platforms	Recirculating live wells
Stern storage for batteries and fuel tanks	Electric trolling motor mounting area
Grant soft grip steering wheel	Rod and ski boxes
Custom bow accessory panel includes: molded plug with two connectors, engine tilt switch, voltmeter w/battery test switch, charge switch, cigar lighter w/chart light	Removable stern light
	Twin custom console
	Dual cable steering

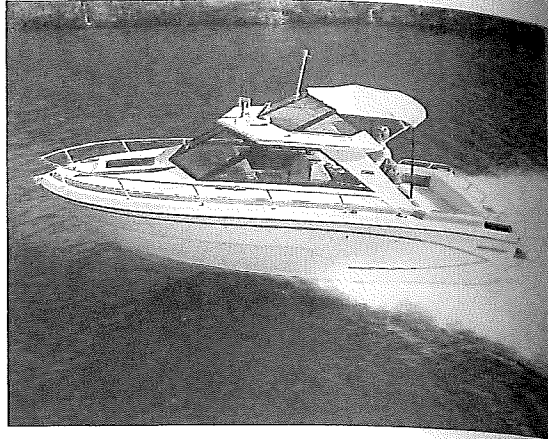
PERFORMANCE:

Optimum performance range	115-175 h.p.
Normal speed range	175 h.p. - 56-59 mph/90-94 kph
	140 h.p. - 47-49 mph/75-79 kph

OPTIONS:

- Upright windscreen* (Clear)
- Sleek windscreen* (Clear)
- Upright windscreen* (Tinted)
- Sleek windscreen* (Tinted)

*Purchased through Parts and Accessories



V-210

A weekend cruiser intelligently thought out to provide room, convenience and comfort. A trailerable 21 footer with stand-up cockpit on a smooth riding deep vee with room to sleep a family of four.

LIST PRICE

w/898 ME

w/228 ME

w/140 OMC

w/185 OMC

w/225 OMC

SALE PRICE

V-210

SPECIFICATIONS:

LOA 20'6½" - 6.3 m
 Gunwale length 21'9" - 6.6 m
 Beam 96" - 2.4 m
 Transom width 91½" - 2.3 m
 Depth 60½" - 1.5 m
 Approximate weight 2280 lbs. - 1036 kg
 Maximum load 1500 lbs. - 681 kg
 Steering Mechanical
 Colors White w/blue pinstripe - white interior; Option: light blue hull

STANDARD FEATURES:

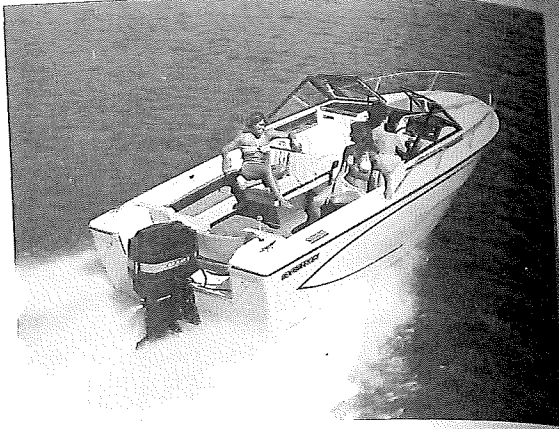
Bilge pump and blower
 Full tinted glass w/sliding side windows
 Command console
 Instrumentation: tachometer, speedometer, volt meter, fuel gauge
 International navigation lights
 Rocker switches for: bilge pump, blower, horn, accessories, tilt
 Molded galley with: insulated ice box, overhead lighting, 14 gallon electric water system, built-in storage
 47 gallon aluminum fuel tank
 Folding lockable cabin door
 Polypropylene cut pile carpeting
 Hand-laid fiberglass construction
 Automatic bilge pump switch
 32-oz. marine grade vinyl

Adjustable helmsman seat
 Stern boarding ladder
 Drink holders/stbd. & port
 Forward cabin with: storage trays, high/low seating, cabin light, sky-light hatch, fun fur ceiling
 S/S steering wheel
 Bow locker and underseat storage
 S/S ski eyes & bow eye
 Padded vinyl stern lounge w/removable side cushions
 Teak step pads in side storage trays
 S/S bow rails
 Teak boarding pads
 S/S assist bar
 Side storage trays

OPTIONS:

Trumpet horn
 Alcohol stove w/cutting board
 Porta-potti
 Full transom swim platform w/rail assembly & ladder
 Hour meter
 Head w/overboard discharge
 Compass
 110V dockside hook up
 Hydraulic boat levelers
 110V-12V refrigerator
 *Group the canvas

Head with hand pump
 Starboard wipers
 Electric stove
 *Stern curtains
 *Soft top
 *Side curtains
 *Camper canvas
 Remote control spotlight
 Accessory wiring harness
 *Cruise curtain
 Power steering, where applicable



V-213

A large bluewater vee hull outboard with cuddy cabin, high freeboard and an interior that is regal. A comfortable outboard for big groups with a power rating to 220 horse-power.

PACKAGE PRICE _____	LIST
Boat _____	_____
Motor _____ H.P.	_____
Trailer _____	_____
Accessories _____	_____
Total List _____	_____
Sale Price _____	_____

SPECIFICATIONS:

LOA	20'7" - 6.3 m
Beam	96" - 2.4 m
Motor shaft length	Single 25" - Twin 20"
Transom width	91½" - 2.3 m
Depth	59¾" - 1.5 m
Approximate weight	1895 lbs. - 860 kg
Rating	220 h.p.
Steering	Mechanical
Colors	Yellow w/yellow interior; White w/brown stripe white interior (special order)

STANDARD FEATURES:

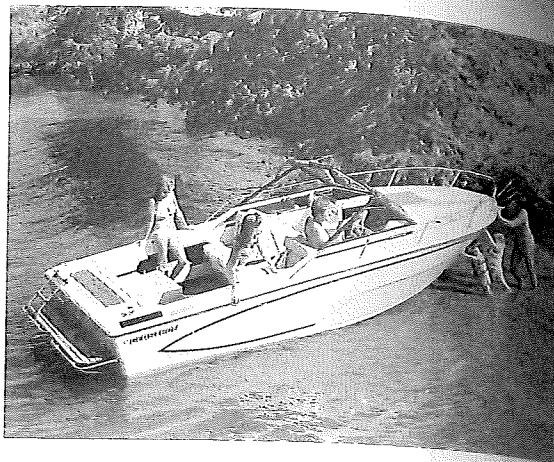
Two sleeper seats	Two stern jump seats
Amidship ice chest w/teak lid	S/S bow rail
Carpet in cabin and cockpit	Teak step pads
47 gallon built-in fuel system	Soft top
Bilge blower	Automatic bilge pump
Folding lockable door to cabin	International lighting
Electric fuel gauge	Aft storage well w/teak lid
Hand-laid fiberglass construction	Glastron 32-oz. marine grade vinyl
BIA Certification	Non-skid deck and floor
Rope guide bow casting	Convertible seating
Cuddy cabin	

PERFORMANCE:

Optimum performance range	115-220 single only
Normal speed range	140 h.p. - 38-41 mph/61-66 kph
	175 h.p. - 44-47 mph/71-76 kph
	200 h.p. - 46-50 mph/74-80 kph

OPTIONS:

Hour Meter	Porta-Potti
S/S lifting ring	Cabin light
Single Trumpet Horn	Windshield wipers (stbd.)
Compass	Side and aft curtains
Morse binnacle control - single	Speedometer
Galley	Dinette



V-214

A spacious 21' stern drive built for rugged bluewater use. An elegant interior with handsome tea accents and rugged quality throughout make this big vee bottom a big water choice for all family fun.

LIST PRICE

w/140 ME

w/165 ME

w/470 ME

w/185 OMC

w/898 ME

SALE PRICE

V-214

SPECIFICATIONS:

LOA	20'6½" - 6.3 m
Gunwale length	21'9" - 6.6 m
Beam	96" - 2.4 m
Transom width	91½" - 2.3 m
Depth	59¾" - 1.5 m
Approximate weight	1910 lbs. - 866 kg
Maximum load	1500 lbs. - 681 kg
Steering Mechanical	
Colors	

Yellow w/yellow interior; White hull w/brown accent - white interior (special order only)

STANDARD FEATURES:

- Hand-laid fiberglass construction
- Command console instrumentation
- tachometer, speedometer, voltmeter, fuel gauge
- S/S bow rails
- 32-qt. ice chest
- Rocker switches for: bilge pump, blower, horn, accessory, tilt
- International navigation lights
- Ski eyes
- Built-in 47 gallon aluminum fuel tank w/direct reading gauge
- Walk-through tinted safety windshield & folding latch

- BIA Certification
- Glastron 32-oz. marine grade vinyl
- Easy-mount convertible top w/boot cover
- Convertible seating
- Chrome plated hardware
- Bilge pump & blower
- Cuddy cabin
- Rope guide bow casting
- S/S helm
- Stern boarding ladder
- Drink holders
- Ice well in stern
- Non-skid deck & floor
- Side storage trays

OPTIONS:

- Side curtains
- S/S lifting ring
- Portable head
- Deluxe convenience package: compass, windshield wiper, electric horn
- Galley: alcohol stove, ice box, sink, with 12 gallon water system
- in handle trim: OMC, Merc

- Full transom swim platform w/ladder
- Hour meter
- Stern curtains
- Camper canvas
- Cabin light
- Dinette, converts to bunk
- Power steering, where applicable



V-215

A fast, soft riding, deep vee center console fisherman designed with features for the serious fisherman. Lots of convenient storage, lots of room for working fish, and lots of performance make this bluewater fisherman an all around performer.

PACKAGE PRICE _____	LIST
Boat _____	_____
Motor _____ H.P.	_____
Trailer _____	_____
Accessories _____	_____
Total List _____	_____
Sale Price _____	_____

SPECIFICATIONS:

LOA	20'7" - 6.3 m
Gunwale length	21'9" - 6.9 m
Bain	96" - 2.4m
Motor shaft length	Twin - 20" - 50.8cm
	Single-25" - 63.5cm
Transom width	91 1/2" - 2.3m
Depth	59 1/2" - 1.5m
Approximate weight	1710 lbs. - 777 kg
Maximum load	2220 lbs. - 1009 kg
Rating	220 h.p.
Steering	Mechanical
Colors	White deck, hull, & liner w/brown striped hull, white interior

STANDARD FEATURES:

Hand-laid fiberglass construction	Glastron 32-oz. marine grade vinyl
Bow storage	S/S ski eyes and bow eye
BIA Certified	Command console
Built-in ice chest	Tinted plexiglass windshield w/grab bar
Fiberglass self-bailing cockpit liner	Two (2) helmsmans chairs
Stainless steel rails & corrosion-resistant hardware	Teak rod rack
International navigation lights	Removable transom board
Large in-floor bait/fishwells w/teak veneer lift-out lids	Lockable console storage
Built-in 47 gallon aluminum fuel tank w/firect reading gauge	Side panel cover
Padded seat forward of center console	High volume bilge pump
Non-skid molded in on deck and floor	Stainless steel helm "Sea Fury" Vee
Aft fishwell w/hinged fiberglass lid	S/S steering wheel
	Two rod holders
	Forward fish well
	Teak step pads
	Automatic bilge pump float switch

OPTIONS:

Custom helmsman fishing chair/ Custom fighting chair/
 Custom helmsman vinyl covers/ 15" outrigger kit/ Stainless steel lifting wheel/ Twin or single morse binnacle control/
 Deluxe instrument package: speedometer, electric fuel gauge, hour meter/ Console cover/ Spray hood and boot for casting platform/ Side curtains/ Stern curtains/ Bimini top/ Spray hood connector to bimini top/ Bench seat - ice box with reversible backrest & cushions/ 75 gallon fuel tank/ Electric head/ Compass



V-216

A "best of both worlds" fishing boat with walk around convenience, and a spacious cuddy cabin. Console/cabin with windshield gives running protection from weather plus a cabin for enclosed sleeping or storage. All the great Sea Fury features in a super outboard walk around package.

PACKAGE PRICE _____	LIST
Boat _____	_____
Motor _____ H.P.	_____
Trailer _____	_____
Accessories _____	_____
Total List _____	_____
Sale Price _____	_____

SPECIFICATIONS:

LOA
Beam
Motor shaft length
Transom width
Depth
Approximate weight
Rating
Steering
Colors

20'7" - 6.3 m
96" - 2.4m
Twin - 20" - 50.8cm
Single - 25" - 63.5cm
91 1/2" - 2.3m
59 1/2" - 1.5m
2030 lbs. - 921 kg
220 h.p.
Mechanical
White deck, hull & liner
with brown striped hull
white interior

STANDARD FEATURES:

14" walk-around
Underseat storage
Storage bins in cabin
Protective windshield
Space for compass and other
instrumentation
3 self-draining in-floor baitwells
S/S rails
Removable battery access panel
in splashwell
New custom bow casting
International lighting
BIA Certified
Storage in aft cabin bulkheads
Automatic bilge pump switch

Enclosed center cabin
Space for optional head
Custom console
S/S steering wheel
2 helm'sman seats
Adjustable driver's seat
Corrosion-resistant hardware
2 teak gunwale rod racks
Non-skid deck and floor
Teak step pads
Built-in 47 gallon fuel tank
w/direct reading gauge
Seat forward lifts for
soft top storage
Cabin windows with
screens & slider

PERFORMANCE:

Optimum performance range 140 h.p. (twin 70's) to 220 h.p.
Normal speed range 200 h.p. - 44-47 mph/70-76 kph

OPTIONS:

Helm'sman seat covers (fits
standard helm'sman seat)
Compass
Windshield wiper
Twin or single Morse binnacle
control
Hour meter only
Softop
Bench seat-ice box with reversi-
ble backrest and cushions
Portable head
75 gallon fuel tank

Custom helm'sman chair
15' outrigger kit
Electric horn
S/S lifting ring
Deluxe instrument package:
speedometer, electric
fuel gauge, hour meter
Helm enclosure canvas
(includes side curtains
and drop stern curtains)
Cabin light



V-218

A trailerable outboard fisherman with a cuddy cabin big enough to get you and your gear out of the weather. Rated for 220 horsepower, the V-218 sports heavy duty corrosion-resistant accessories for durability, plus an inner liner for easy cleaning. A Sea Fury hull smoothes out the worst seas and takes you quickly to your favorite fishing hole.

PACKAGE PRICE	_____	LIST
Boat	_____	
Motor _____ H.P.	_____	
Trailer	_____	
Accessories	_____	
Total List	_____	
Sale Price	_____	
60		

SPECIFICATIONS:

- LOA
- Gunwale length
- Beam
- Motor shaft length
- Transom width
- Depth
- Approximate weight
- Maximum load
- Rating
- Steering
- Colors

- 20'7" - 6.3 m
- 21'9" - 6.6 m
- 96" - 2.4m
- Twin - 20" - 50.8cm
- Single - 25" - 63.5cm
- 91 1/2" - 2.3m
- 59 3/4" - 1.5m
- 1895 lbs. - 859 kg
- 2220 lbs. - 1007 kg
- 220 h.p.
- Mechanical
- White deck, hull & liner w/brown accent stripe, white interior

STANDARD FEATURES:

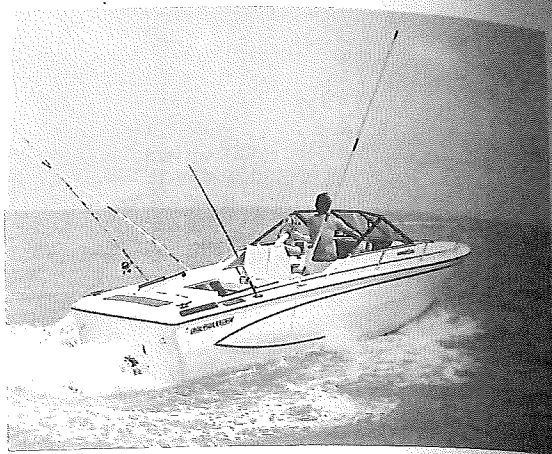
- Hand-laid fiberglass construction
- Underseat storage compartment
- BIA Certified
- Command console
- Full tinted walk-through safety glass windshield
- Stainless steel rails & corrosion-resistant hardware
- International navigation lights
- Removable transom board
- Built-in 47 gallon aluminum fuel tank w/direct reading gauge
- Port lay-down sleeper seat
- Lift-out companion way hatch
- Teak grab rail
- Large in-floor bait/fishwells w/teak veneer lift-out lids
- Two chocks

- 32-oz. marine grade vinyl
- Teak step pads
- S/S ski eyes and bow eye
- Built-in ice chest
- Fiberglass self-bailing cockpit liner
- Stbd. helmsman seat
- Teak rod racks
- High volume bilge pump
- Stainless steel helm
- Folding softop
- Folding hatch to bow
- Non-skid deck & floor
- Aft fishwell w/hinged fiberglass lid
- Space for optional head
- Automatic bilge pump w/foot switch
- Sea Fury vee

OPTIONS:

- Custom fighting chair
- Custom helmsman vinyl covers
- S/S lifting ring
- Compass
- Electric horn
- Portable head
- Deluxe instrument package: speedometer, electric fuel gauge, hour meter
- Cabin light

- Custom helmsman chair
- 15' outrigger kit w/2 rod holders
- Windshield wiper
- Twin or single morse binnacle control
- Side curtains
- Stern curtains
- Port helmsman seat
- 75 gallon fuel tank



V-219

A sterndrive deep vee fisherman built to take the consistent pounding of offshore fishing with the performance and quick response of a runabout. An easy to clean liner, dry cuddy cabin, and many fishing conveniences make this traditional cuddy boat a fisherman's dream.

LIST PRICE

w/140 ME

w/165 ME

w/470 ME

w/898 ME

w/185 OMC

w/200 Volvo

SALE PRICE

SPECIFICATIONS:

LOA
 Gunwale length
 Beam
 Transom width
 Depth
 Approximate weight
 Maximum load
 Steering
 Colors

20' 6½" - 6.3m
 21' 9" - 6.6 m
 96" - 2.4m
 91½" - 2.3m
 59¾" - 1.5m
 1910 lbs. - 866 kg
 1500 lbs. - 680 kg
 Mechanical
 White hull, deck & liner
 w/brown accent stripe
 and white interior

STANDARD FEATURES:

Hand-laid fiberglass construction
 High volume bilge pump
 Underseat storage compartment
 S/S ski eyes and bow eye
 Command console
 instrumentation: tachometer,
 speedometer, voltmeter,
 fuel gauge; rocker switches
 for: bilge pump, blower,
 horn, accessory, tilt & trim,
 navigation & anchor lights,
 interior & panel lights
 S/S rails and marine hardware
 Full tinted walk-through safety
 glass windshield
 Built-in 47 gallon fuel tank
 w/direct reading fuel gauge
 Cuddy cabin w/storage forward
 Lift-out companion way hatch
 International navigation lights
 Large in-floor bait/fishwells
 w/teak veneer lift-out lids

OPTIONS:

Custom helmsman chair
 Custom helmsman vinyl covers
 S/S lifting ring
 Compass
 Windshield wiper
 Electric horn
 Hour meter
 75 gallon fuel tank
 In handle trim:
 OMC, Merc

Glastron 32-oz. marine
 grade vinyl
 BIA Certified
 Port lay-down sleeper seats
 Stbd. helmsman seat
 Teak grab rail
 Fiberglass cockpit liner
 S/S helm
 SeaFury vee
 Folding softtop
 High volume bilge pump
 Two chocks
 Non-skid deck & floor
 Teak rod rack
 Teak step pads
 Automatic bilge pump
 float switch
 Folding hatch to bow
 Aft fishwell w/hinged
 fiberglass lid
 Space for optional head

15' outrigger kit w/2 rod
 holders
 Portable head
 Camper canvas
 Side curtains
 Stern curtains
 Port helmsman seat
 Cabin light
 Power steering, where
 applicable: OMC, Merc



V-225

A classic day cruiser with deep vee performance and comfort. A tested 22 footer with plenty of power and options to customize to your cruiser needs.

LIST PRICE

SALE PRICE

	w/228 ME	
	w/225 OMC	

V-225

SPECIFICATIONS:

LOA	22'1¼" - 6.7 m
Gunwale length	23'4½" - 7.1 m
Beam	91¼" - 2.3 m
Transom width	82" - 2.1 m
Depth	67¾" - 1.7 m
Approximate weight	2275 lbs. - 1034 kg
Maximum load	1500 lbs. - 681 kg
Steering	Mechanical
Colors	Tan Hull/Tan Interior

STANDARD FEATURES:

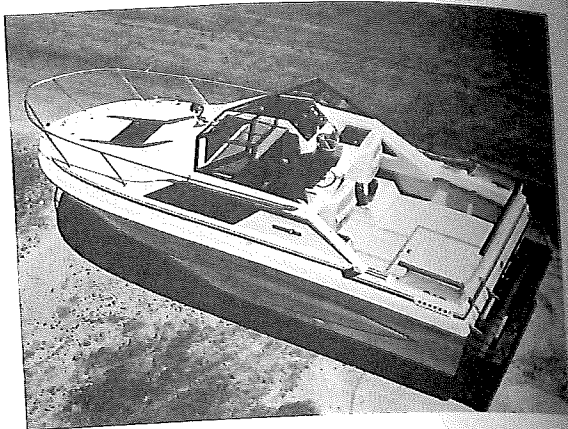
Hand-laid fiberglass construction	Glastron 32-oz. marine grade vinyl
BIA Certification	Convertible seating
Easy-mount convertible top w/boot cover	Bow locker
Underseat storage compartment	Ski eyes
Built-in 47 gallon fuel system with gauge	Electric horn
Rocker switches for: bilge pump, blower, horn, accessories, tilt	Command console instrumentation: tachometer, speedometer, voltmeter, fuel gauge
Bilge pump and blower	Drink holders
Stern boarding ladder	International navigation lights
S/S bow rails	Convertible aft jump seat
S/S helm	Hinged instrument panel
Cuddy cabin	
Teak step pads	
Teak taffrail	

PERFORMANCE:

Normal speed range	Merc 898: 43-45 mph/69-72 kph
	Merc 228: 45-47 mph/72-75 kph
	Volvo 200: 43-45 mph/69-72 kph

OPTIONS:

Marine head w/holding tank	Engine options:
Windshield wiper	890 Merc
Engine hour meter	140 Volvo
Binnacle mounted compass	200 Volvo
Galley/Dinette	230 OMC
Side/stern canvas	228 Merc
Boat levelers	200 OMC
Vista cruiser canvas	Swim platform
In handle trim:	Power steering, where applicable:
OMC	OMC
Merc	Merc



V-235

An all new big family cruiser with lots of freeboard and standard features. It's quick to plane and designed for all family boat camping at its best. Here's 23 feet of thoughtfully conceived cruiser designed with you in mind.

LIST PRICE

- w/470 ME
- w/898 ME
- w/228 ME
- w/260 ME
- w/200 OMC
- w/230 OMC
- w/200 Volvo

SALE PRICE

SPECIFICATIONS:

- LOA
- Transom width
- Approximate weight
- Steering
- Colors

- 22'11 1/2" - 7.0 m
- 96" - 2.4 m
- 4000 lbs.
- Power steering, where applicable
- Blue hull/blue and white deck

STANDARD FEATURES:

- Boarding ladder
- Pressure water system - 20 gallons
- Porta-Potti
- Alcohol stove w/cutting board
- Two elevated sleeper seats
- Galley w/ice box and sink
- Enclosed head
- Hand-laid fiberglass construction

- Full instrumentation
- Glastron 32-oz. marine grade vinyl
- Automatic bilge pump
- International lighting
- Soft top
- Vanity w/sink
- BIA Certified
- 87 gallon fuel tank

PERFORMANCE:

- Normal speed range

228 ME -36-38 mph

OPTIONS:

- 110V Dockside hookup
- 110V/12V refrigerator
- Alcohol electric stove
- Boat levelers
- Remote spotlight
- Single trumpet horn
- Electric head
- Full swim platform
- Hour meter
- Compass
- Side & main hatch screens
- Stern curtains
- Power steering, where applicable

Engines (single only):

- 470 ME
- 898 ME
- 228 ME
- 260 ME
- 200 OMC
- 230 OMC
- 200 Volvo
- Trim gauges
- Window curtains
- Side canvas
- Camper canvas



CVX 16 STD.

Sixteen feet of no frills, stripped-for-action Carlson. A basic outboard sport boat that says nothing but performance, but in a clean stylish way.

PACKAGE PRICE

LIST

Boat	_____
Motor _____ H.P.	_____
Trailer	_____
Accessories	_____
Total List	_____
Sale Price	_____

CVX-16 STD.

SPECIFICATIONS:

LDA	16'7½" - 5.05 m
Gunwale length	17'5" - 5.3 m
Beam	79½" - 2.01 m
Motor shaft length	20" - 50.8 cm
Transom width	76" - 1.93 m
Depth	34" - 86.3 cm
Approximate weight	660 lbs. - 300 kg
Maximum load	1350 lbs. - 613 kg
Rating	125 h.p.
Steering	Mechanical
Colors	Tutone metalflake gold and yellow/gold plush interior

STANDARD FEATURES:

- Hand-laid fiberglass construction
- Polypropylene cut pile carpeting
- BIA Certified
- Navigation lights
- Ski eyes
- Integral stern boarding step
- Deep foam bucket seats
- Wrap-around stern bench w/storage
- 18 gallon fuel tank w/electric gauge
- Woodgrain dash
- Plexiglass instrument shield
- Grab bar
- Storage tray in dash
- Teak step pads
- Custom sport wheel
- Rack and pinion steering
- Positive foam flotation

PERFORMANCE:

Optimum performance range	70-125 h.p.
Normal speed range	115-125 h.p. - 46-48 mph/73-76 kp

OPTIONS:

- Contoured plexiglass windscreen
- Side rail package



CVX 16 DELUXE XD

Here's 16 feet of pure outboard performance. Exciting, quick and strong. A spacious 16 with a brilliant metalflake finish that will make heads turn.

PACKAGE PRICE _____ LIST

Boat	_____
Motor _____ H.P.	_____
Trailer	_____
Accessories	_____
Total List	_____
Sale Price	_____

CVX-16 DELUXE

SPECIFICATIONS:

LOA	16'7 1/4" - 5.0 m
Gunwale length	17'5" - 5.3 m
Beam	79 1/2" - 2.0 m
Motor shaft length	20" - 50.8 cm
Transom width	76" - 1.9m
Depth	34" - .86 m
Approximate weight	700 lbs. - 300 kg
Maximum load	1350 lbs. - 613 kg
Rating	125 h.p.
Steering	Mechanical
Colors	Tutone metalflake orange and yellow/ orange plush interior: Tutone metalflake blue and light blue/blue plush interior

STANDARD FEATURES:

Hand-laid fiberglass construction	Polypropylene cut pile carpeting
BIA Certification	Ski eyes
Navigation lights	Deep foam bucket seats
Integral stern boarding step	18 gallon fuel tank w/electric gauge
Wrap-around stern bench w/storage	Plexiglass instrument shield
Woodgrain dash	Storage tray in dash
Grab bar	Custom sport wheel
Teak step pads	Positive foam flotation
Rack and pinion steering	Concealed electric horn
Wrap-around plexiglass windscreen	Stern rails
Speedometer	Tachometer

PERFORMANCE:

Optimum performance range	70-125 h.p.
Normal speed range	85-100 h.p. - 43-45 mph/68-72 kph
	115-125 h.p. - 47-51 mph/76-82 kph



CVX 16 SS

55

A sizzling 16' sterndrive built for the performance buff. Light and easily trailered behind most cars, this super sleek sport boat is nothing but a spartan on gas. Grab the wheel of this, out smallest sterndrive, and fly.

LIST PRICE
 _____ OMC 140
 _____ Merc 140

SALE PRICE

CVX-16 SS

SPECIFICATIONS:

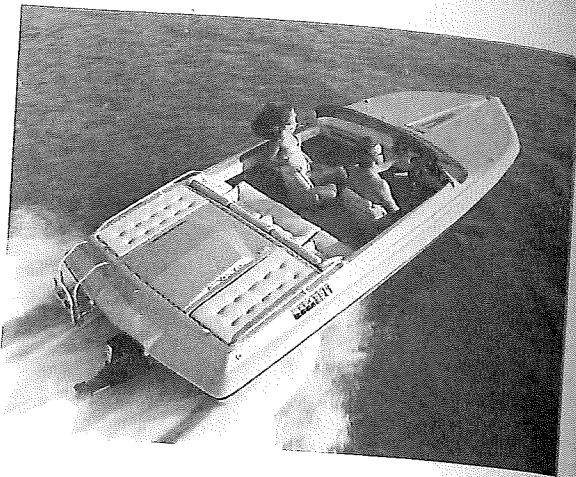
LOA	16'9½" - 5.1 m
Gunwale length	17'5" - 5.3 m
Beam	79½" - 2.0 m
Transom width	76" - 1.9 m
Depth	34" - .86 m
Approximate weight	775 lbs. - 352 kg
Maximum load	750 lbs. - 341 kg
Steering	Mechanical
Colors	Tutone metalflake champagne and beige/ beige plush interior

STANDARD FEATURES:

Hand-laid fiberglass construction	Teak step pads
BIA Certified	Positive foam flotation
Navigation lights	Concealed electric horn
Wrap-around plexiglass windscreen	Ski eyes
Stern rails	Bilge pump and blower
Deluxe sport wheel	Custom instrumentation
Sculptured dash with instrumentation	tachometer, speedometer, voltmeter, fuel gauge
Plush carpet	Integral stern boarding step
Deep foam bucket seats	18 gallon fuel tank with electric gauge
Wrap-around stern bench with storage	Storage tray in dash
Grab bar	

PERFORMANCE:

Normal speed range	Merc 140: 44-47 mph/70-75 kph
	OMC 140: 47-50 mph/76-82 kph



CVX 18

The champion of eighteens, a stern drive with class and performance. Strong out of the hole, smooth on the top end, elegant throughout. Name your pleasure!

LIST PRICE

SALE PRICE

_____		_____
_____	Merc 198	_____
_____	OMC 230	_____
_____	Accessories	_____
Package Price w/ _____	H.P.	\$ _____

CVX-18

SPECIFICATIONS:

LOA	18'1 1/2" - 5.5m
Gunwale length	18'9 1/2" - 5.7 m
Beam	87" - 2.2 m
Transom width	86" - 2.2 m
Depth	37" - 0.9 m
Approximate weight	1050 lbs. - 476 kg
Maximum load	1050 lbs. - 476 kg
Steering	Mechanical
Colors	Tutone metalflake champagne and beige/beige plush interior; Tutone metalflake silver and gray/gray interior

STANDARD FEATURES:

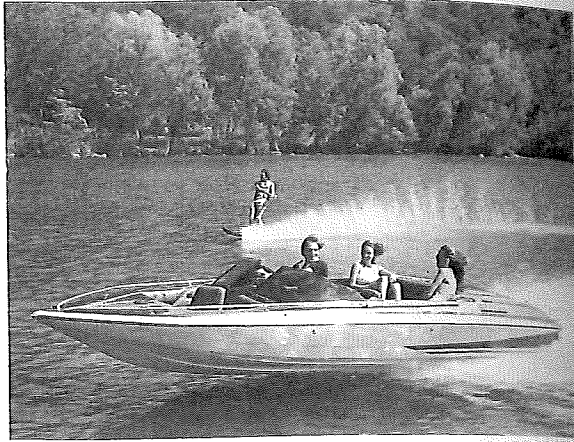
Hand-laid fiberglass construction	Plush carpet
BIA Certified	Ski storage under rear seat
Navigation lights	27 gallon built-in fuel system
Ski eyes	Command console instrumentation: tachometer, voltmeter, oil pressure gauge, water temperature gauge, fuel gauge
Enclosed stern storage	Grab bar
Bilge pump and blower	Rack and pinion steering
Stern boarding ladder	Wrap-around plexiglass windscreen
Swiveling bucket seats	Speedometer
Wrap-around stern bench w/storage	Luxurious tufted upholstery
Plexiglass instrument shield	
Custom sport wheel	
Positive foam flotation	
Concealed electric horn	
Stern rails	
ABS dash with instrumentation	

PERFORMANCE:

Normal speed range	Merc 898: 48-52 mph/76-83 kph
	OMC 230: 52-55 mph/83-88 kph

OPTIONS:

Removable competition ski tow	Engines:
	898 Merc
	230 OMC



CVZ 18 Bow Rider

The Carlson 18 Bow Rider is fresh, strong, and unequalled. The fiery V-8 performance of this exciting convertible open bow stern drive will give the family a new escape into their vacation dreams. A new spacious 18' stern drive with the performance and good looks of a refined sports car.

LIST PRICE

SALE PRICE

_____		_____
_____	ME 898	_____
_____	OMC 185	_____
_____	Accessories	_____
Package Price w/ _____	H.P.	_____

CVZ-18

LOA	18'1 1/2" - 5.5 m
Gunwale length	18'9 1/2" - 5.7 m
Beam	87" - 2.2 m
Transom width	86" - 2.2 m
Depth	37" - .94 m
Approximate weight	950 lbs. - 432 kg
Maximum load	900 lbs. - 409 kg
Steering	Merc - rack and pinion OMC - true course
Colors	Tutone metalflake bronze and tan/ bronze plus interior; Tutone metalflake blue and light blue/blue plush interior

STANDARD FEATURES:

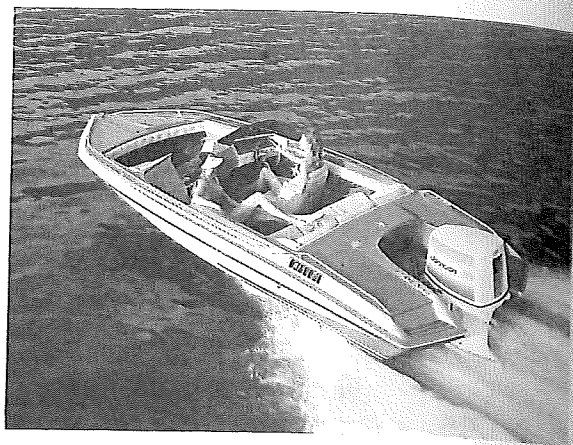
- Hand-laid fiberglass construction
- Bow seating - deep foam cushioned
- 26 gallon built-in fuel system
- BIA Certified
- Navigation lights
- Ski eyes
- Enclosed stern storage
- Bilge pump and blower
- Wrap-around stern bench with storage
- Custom sport wheel
- Positive foam flotation
- Stern rails
- Walk-through tinted plexiglass windscreen
- Plush carpet
- Ski storage
- Command console instrumentation:
 - tachometer, voltmeter,
 - oil pressure gauge, water temperature gauge,
 - fuel gauge
- Stern boarding ladder
- Deep foam bucket seats
- Grab bar
- Rack and pinion steering
- Concealed electric horn
- Speedometer
- Luxurious tufted upholstery
- Woodgrain dash

PERFORMANCE:

Normal speed range
 Merc 898: 48-52 mph/76-83 kph
 OMC 230: 52-55 mph/83-88 kph

OPTIONS:

- Removable competition ski tow
- Front compartment cover
- Engines:
 - 898 Merc
 - 230 OMC 79



CVZ 19 Bow Rider

The all new Carlson CVZ-19 Bow Rider. Super performance with its deep vee hull and sculptured transom to reduce wind drag. A spectacular high performance family boat combining the versatility of an open bow with the sleek good looks of a low profile.

LIST PRICE

SALE PRICE

Accessories

Package Price w/ _____ H.P. \$ _____

CVZ 19

SPECIFICATIONS:

LOA	18'10" - 5.8 m
Gunwale length	19'2½" - 5.9 m
Beam	87" - 2.2 m
Motor shaft length	20" - 50.8 cm
Transom width	85¼" - 2.2 m
Depth	37½" - 1.0 m
Approximate weight	1100 lbs. - 499 kg.
Maximum load	1515 lbs. - 687 kg
Rating	175 h.p.
Steering	Rack and pinion
Colors	Tutone metalflake gold and Yellow/yellow plush interior; Tutone metalflake blue and light blue/blue plush interior

STANDARD FEATURES:

Hand-laid fiberglass construction	Woodgrain Dash
Bow seating - deep foam cushioned	Plush carpet
BIA Certified	Ski storage
Navigation lights	26 gallon built-in fuel system
Ski eyes	Command console instrumentation:
Enclosed stern storage	speedometer, tachometer, fuel gauge
Stern boarding ladder	Grab bar
Deep foam bucket seats	Custom sport wheel
Wrap-around stern bench with storage	Dual cable steering
Rack and pinion steering	Walk-through tinted plexiglass windscreen
Positive foam flotation	
Luxurious tufted upholstery	

PERFORMANCE:

Optimum performance range 115-175 h.p.

OPTIONS:

Removable competition ski tow

302V

Glastron *Outfront.*

Glastron Boat Company A *Cummins* Company
9108 Reid Dr.
Austin, Texas 78759 Pompano Beach, Florida

1000